

UNITED STATES
DEPARTMENT OF THE INTERIOR
BUREAU OF LAND MANAGEMENT

APPLICATION FOR PERMIT TO DRILL, DEEPEN, OR PLUG BACK

1a. TYPE OF WORK

DRILL ☒

DEEPEN ☐

PLUG BACK ☐

b. TYPE OF WELL

OIL
WELL ☒

GAS
WELL ☐

OTHER

SINGLE
ZONE ☒

MULTIPLE
ZONE ☐

2. NAME OF OPERATOR

Union Texas Petroleum

3. ADDRESS OF OPERATOR

375 U.S. Highway 64, Farmington New Mexico 87401

4. LOCATION OF WELL (Report location clearly and in accordance with any State requirements.)

At surface

900' FNL & 1715' FWL

At proposed prod. zone

Same as above

14. DISTANCE IN MILES AND DIRECTION FROM NEAREST TOWN OR POST OFFICE*

4.5 miles N of Lybrook, New Mexico

15. DISTANCE FROM PROPOSED*

LOCATION TO NEAREST
PROPERTY OR LEASE LINE, FT.
(Also to nearest drlg. unit line, if any)

900' from lease

900' from DU

18. DISTANCE FROM PROPOSED LOCATION*
TO NEAREST WELL, DRILLING, COMPLETED,
OR APPLIED FOR, ON THIS LEASE, FT.

1241'

21. ELEVATIONS (Show whether DF, RT, GR, etc.)

6813' Graded 6825' KB

23.

PROPOSED CASING AND CEMENTING PROGRAM

SIZE OF HOLE	SIZE OF CASING	WEIGHT PER FOOT	SETTING DEPTH	
12-1/4"	8-5/8"	24.0#	300'	225 sxs (266 cu.ft.)
7-7/8"	4-1/2"	10.5#	5775'	1010 sxs (2106 cu.ft.)
		stage tool @ 3400'		

Union Texas Petroleum desires to drill a 12-1/4" hole to 300'+ and set 8-5/8", 24#, K-55, ST&C to 300'+, cementing same to surface with 225 sxs (266 cu.ft.) CI "B" containing 2% CaCl₂. W.O.C. Nipple up. Test BOP, choke manifold and casing. Drill 7-7/8" hole out of surface casing to 5775'. Log well with DIL-GR: TD-surface casing. FDC-CNL: TD-surface casing. If commercial production is indicated, run 4-1/2", 10.5#, K-55 ST&C casing to TD. Cement 1st stage with 610 sxs (958 cu.ft.) 50/50 POZ w/4% gel, 6-1/4# gilsonite, 10# salt. (Stage tool @ 3400') Cement 2nd stage with 400 sxs (1148 cu.ft.) 65/35 POZ w/12% gel and 12-1/4# gilsonite. Perforate and frac pay in Gallup. Test well. Install production equipment. Tie well into Northwest Pipeline's existing line immediately west of location.

IN ABOVE SPACE DESCRIBE PROPOSED PROGRAM: If proposal is to deepen or plug back, give data on present productive zone and proposed new productive zone. If proposal is to drill or deepen directionally, give pertinent data on subsurface locations and measured and true vertical depths. Give blowout preventer program, if any.

24.

SIGNED

Robert C. Frank

TITLE

Permit Coordinator

DATE

October 24, 1986

(This space for Federal or State office use)

PERMIT NO.

APPROVAL DATE

APPROVED BY

TITLE

DATE

NOV 18 1986

CONDITIONS OF APPROVAL, IF ANY:

/s/ J. Stan McKee

*See Instructions On Reverse Side

FOR AREA MANAGER

**NEW MEXICO OIL CONSERVATION COMMISSION
WELL LOCATION AND ACREAGE DEDICATION PLAT**

Form C-104
Supersedes C-121
Effective 11-83

All distances must be from the outer boundaries of the Section.

Operator UNION TEXAS PETROLEUM CORPORATION			Lease ERNEST		Well No. 2
Well Letter C	Section 27	Township 24 NORTH	Range 7 WEST	County RIO ARriba	

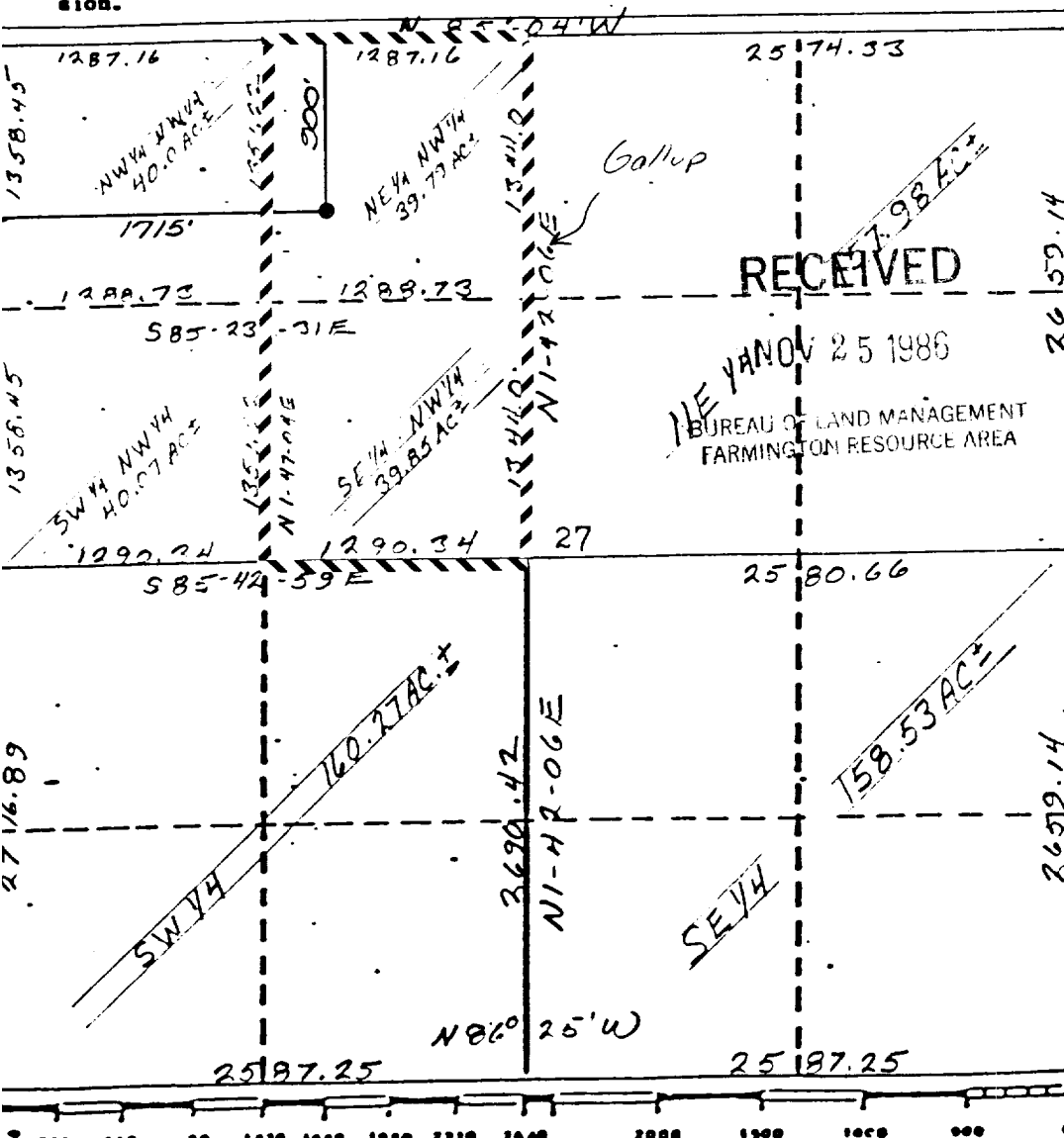
Actual Footage Location of Wells

900 feet from the NORTH line and 1715 feet from the WEST line	Pool Escrito Assoc.	Dedicated Acreage 79.64 AC
Ground Level Elev. 6813	Producing Formation Gallup	Acres

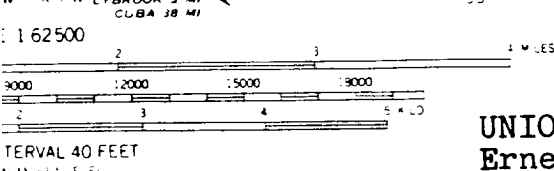
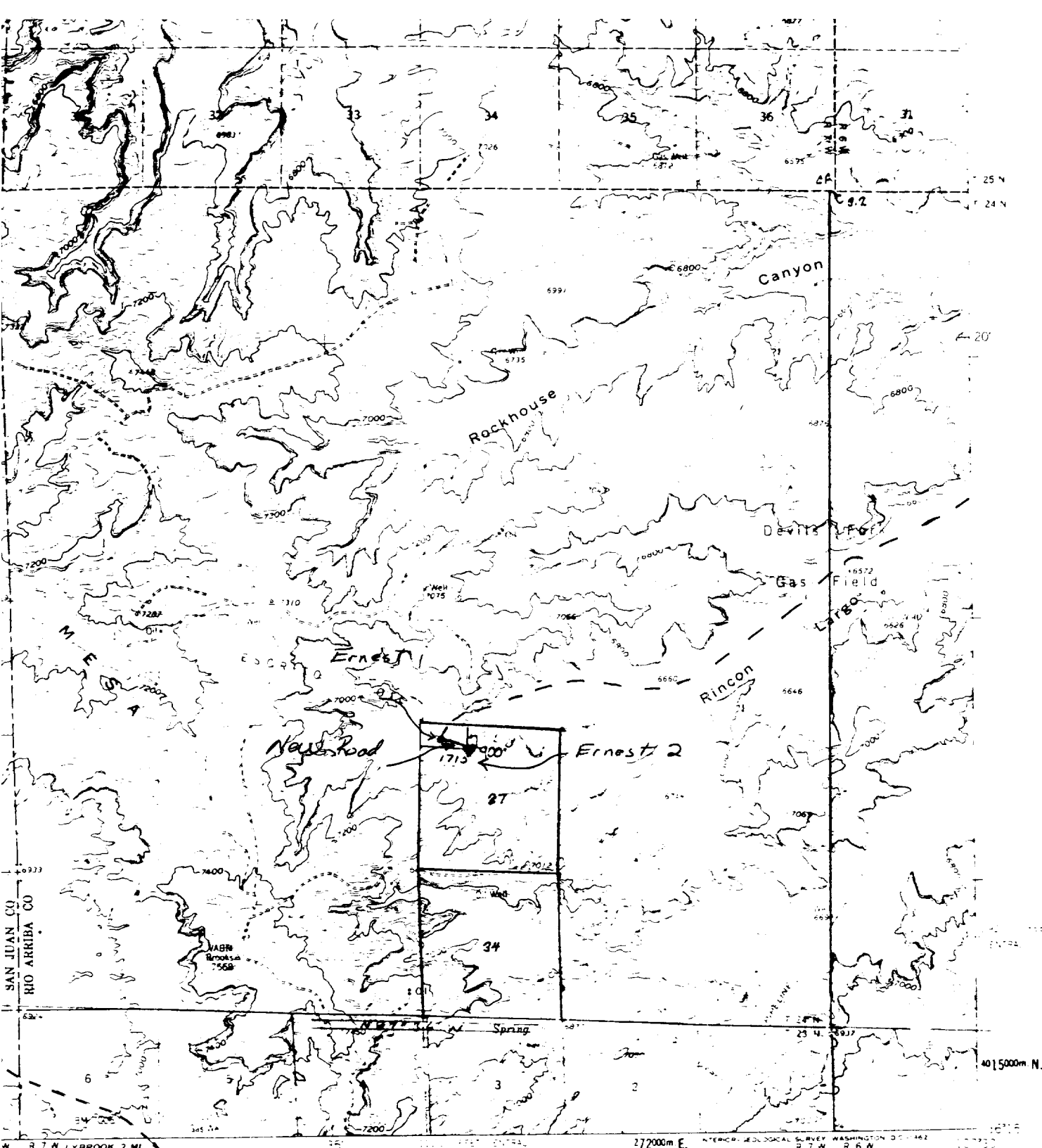
1. Outline the acreage dedicated to the subject well by colored pencil or hatchure marks on the plat below.
 2. If more than one lease is dedicated to the well, outline each and identify the ownership thereof (both as to working interest and royalty).
 3. If more than one lease of different ownership is dedicated to the well, have the interests of all owners been consolidated by communitization, unitization, force-pooling, etc?
- ☐ Yes ☐ No If answer is "yes," type of consolidation _____

If answer is "no," list the owners and tract descriptions which have actually been consolidated. (Use reverse side of this form if necessary.)

No allowable will be assigned to the well until all interests have been consolidated (by communitization, unitization, forced-pooling, or otherwise) or until a non-standard unit, eliminating such interests, has been approved by the Commission.



CERTIFICATION	
I hereby certify that the information contained herein is true and complete to the best of my knowledge and belief.	
<i>Robert C. Frank</i>	
Name	Robert C. Frank
Position	Permit Coordinator
Company	Union Texas Petroleum
Date	November 21, 1986
I hereby certify that the well location shown on this plat was plotted from field notes of approved surveys made by me or under my supervision and that the same is true and correct to the best of my knowledge and belief.	
Date Surveyed	December 18, 1984
Registered Professional Engineer and/or Land Surveyor	<i>George R. Tompkins</i>
Certificate No.	7259



UNION TEXAS PETROLEUM CORPORATION
 Ernest #2
 NE $\frac{1}{4}$ NW $\frac{1}{4}$, Sec. 27, T24N, R7W, N.M.P.M.,
 Rio Arriba County, New Mexico

ZI, N. MEX.
 N3615 - W10730/15
 1959

Exhibit II