

NEW MEXICO OIL CONSERVATION COMMISSION
WELL LOCATION AND ACREAGE DEDICATION PLAT

Form C-102
Supersedes C-128
Effective 1-1-65

All distances must be from the outer boundaries of the Section.

Operator BENSON MONTIN GREER DRILLING CORP.			Lease Canada Ojitos Unit		Well No. #35 (D-17)
Unit Letter D	Section 17	Township 25 NORTH	Range 1 WEST	County RIO ARriba	
Actual Footage Location of Well: 1200 feet from the NORTH line and 300 feet from the WEST line					
Ground Level Elev. 7465'	Producing Formation Niobrara	Pool West Puerto Chiquito Mancos	Dedicated Acreage: 640 Acres		

1. Outline the acreage dedicated to the subject well by colored pencil or hatchure marks on the plat below.
2. If more than one lease is dedicated to the well, outline each and identify the ownership thereof (both as to working interest and royalty).
3. If more than one lease of different ownership is dedicated to the well, have the interests of all owners been consolidated by communitization, unitization, force-pooling, etc?

☒ Yes ☐ No If answer is "yes," type of consolidation Unitization

If answer is "no," list the owners and tract descriptions which have actually been consolidated. (Use reverse side of this form if necessary.)

No allowable will be assigned to the well until all interests have been consolidated (by communitization, unitization, forced-pooling, or otherwise) or until a non-standard unit, eliminating such interests, has been approved by the Commission.

		<p>RECEIVED</p> <p>NOV 12 1986</p> <p>BUREAU OF LAND MANAGEMENT FARMINGTON RESOURCE AREA</p>
		<p>17</p> <p>DEC 05 1986</p> <p>OIL CON. DIV. DIST. 3</p>

CERTIFICATION

I hereby certify that the information contained herein is true and complete to the best of my knowledge and belief.

Virgil L. Stoabs
Name

Virgil L. Stoabs

Position

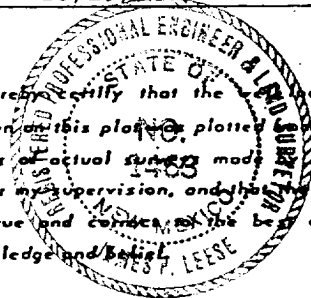
Vice President

Company Benson-Montin-Greer
Drilling Corp.

Date

10/29/86

I hereby certify that the well location shown on this plat or plotted on field notes of actual survey made by me or under my supervision, and that the same is true and correct to the best of my knowledge and belief.



Date Surveyed

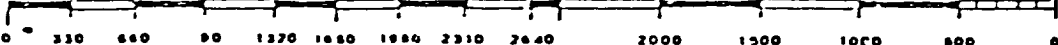
14 October 1986

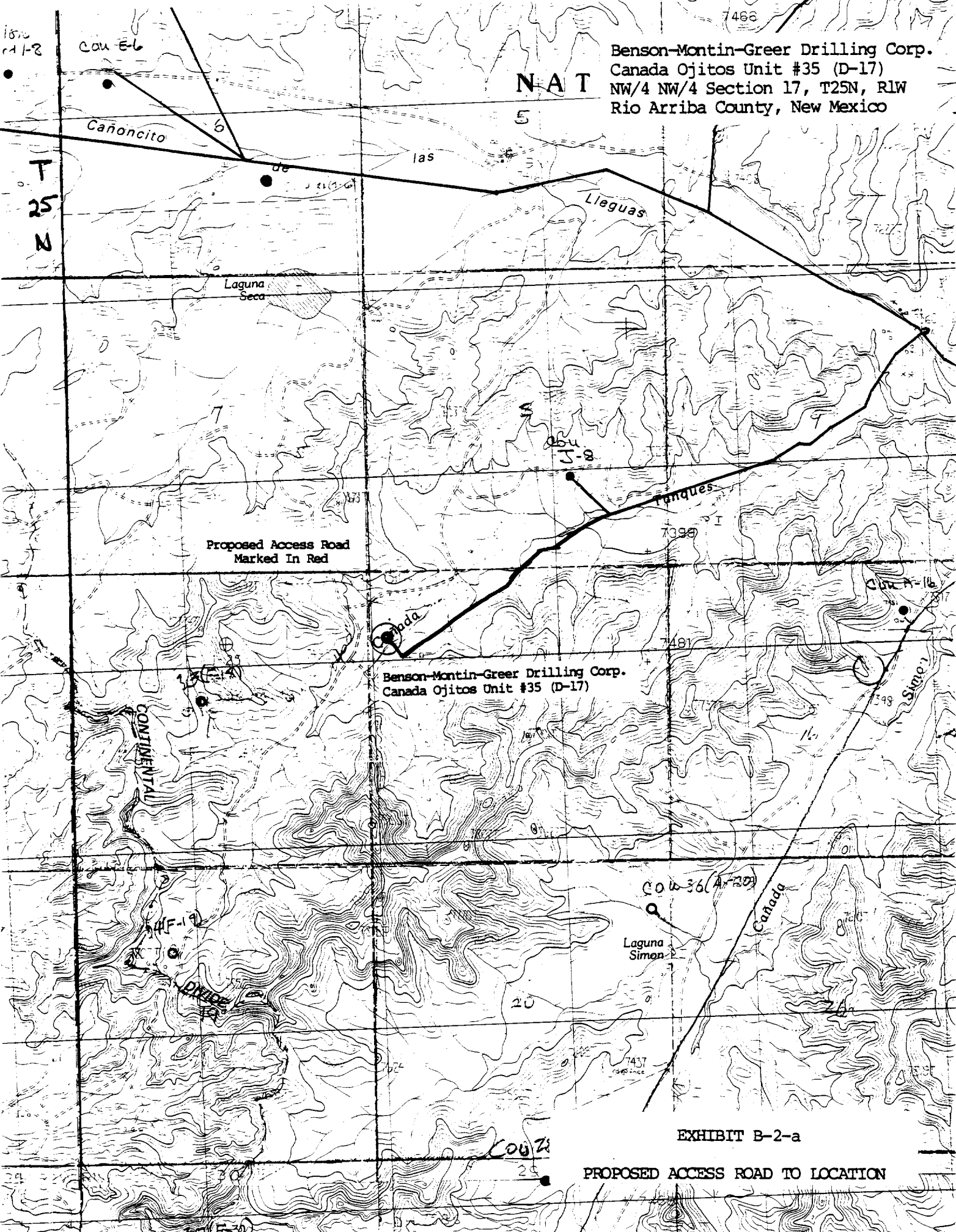
Registered Professional Engineer
and/or Land Surveyor

James P. Leese
James P. Leese

Certificate No.

1463





Benson-Montin-Greer Drilling Corp.
Canada Ojitos Unit #35 (D-17)
NW/4 NW/4 Section 17, T25N, R1W
Rio Arriba County, New Mexico

Proposed Access Road
Marked In Red

Benson-Montin-Greer Drilling Corp.
Canada Ojitos Unit #35 (D-17)

EXHIBIT B-2-a

PROPOSED ACCESS ROAD TO LOCATION