

UNITED STATES
DEPARTMENT OF THE INTERIOR
BUREAU OF LAND MANAGEMENT

SUBMIT IN TRIPLICATE*
(Other instructions on
reverse side)

Form approved.
Budget Bureau No. 1004-0136
Expires August 31, 1985

RECEIVED
BLM MAIL ROOM

APPLICATION FOR PERMIT TO DRILL, DEEPEN, OR PLUG BACK

1a. TYPE OF WORK
DRILL ☒ DEEPEN ☐ PLUG BACK ☐

b. TYPE OF WELL
OIL WELL ☐ GAS WELL ☒ OTHER ☐ SINGLE ZONE ☒ MULTIPLE ZONE ☐

2. NAME OF OPERATOR
Union Texas Petroleum

3. ADDRESS OF OPERATOR
375 U.S. Highway 64, Farmington New Mexico 87401

4. LOCATION OF WELL (Report location clearly and in accordance with any State requirements.)
At surface 1850' FSL & 1844' FEL
At proposed prod. zone

14. DISTANCE IN MILES AND DIRECTION FROM NEAREST TOWN OR POST OFFICE*
3 miles W-SW of Ojito, New Mexico

15. DISTANCE FROM PROPOSED*
LOCATION TO NEAREST
PROPERTY OR LEASE LINE, FT. 1844' from lease
(Also to nearest drig. unit line, if any) 1844' from DU

16. NO. OF ACRES IN LEASE
640

17. NO. OF ACRES ASSIGNED
TO THIS WELL S/2 320-00
319.28 acres

18. DISTANCE FROM PROPOSED LOCATION*
TO NEAREST WELL, DRILLING, COMPLETED,
OR APPLIED FOR, ON THIS LEASE, FT. 1078'

19. PROPOSED DEPTH
6160'

20. ROTARY OR CABLE TOOLS
Rotary

21. ELEVATIONS (Show whether DF, RT, GR, etc.)
7204 G.L. (7200 graded)

22. APPROX. DATE WORK WILL START*
August 30, 1987

5. LEASE DESIGNATION AND SERIAL NO.
SF-079609

6. IF INDIAN, ALLOTTEE OR TRIBE NAME
N/A

7. UNIT AGREEMENT NAME
N/A

8. FARM OR LEASE NAME
McCRODEN "A"

9. WELL NO.
8A

10. FIELD AND POOL, OR WILDCAT
Blanco Mesaverde

11. SEC., T., R., M., OR BLK.
AND SURVEY OR AREA
Section 9, T25N-R3W

12. COUNTY OR PARISH
Rio Arriba

13. STATE
NM

23. PROPOSED CASING AND CEMENTING PROGRAM

SIZE OF HOLE	SIZE OF CASING	WEIGHT PER FOOT	SETTING DEPTH	
12-1/4"	9-5/8"	32.3#	450'	250 sxs (295 cu.ft.)
8-3/4"	7"	23.0#	3950'	365 sxs (879 cu.ft.)
6-1/4"	4-1/2" liner	10.5	3750'-6160'	300 sxs (471 cu.ft.)

Union Texas Petroleum wishes to advise we intend to drill 12-1/4" hole with mud to 450' and set 9-5/8" 32.3#, H-40, ST&C csg. to 450', cementing to surface with 259 sx (295 cu.ft.) CI "B" with 2% CaCl2 and 1/4# flocele/sk. Wait on cement for 12 hrs.

Nipple up, test BOP. Drill 8-3/4" hole with mud out of surface to 3950'. Set 7", 23.0#, K-55, ST&C intermediate csg. to 3950', cementing to surface with 265 sx (761 cu.ft.) 65-35 POZ with 12% gel and 12-1/4# gilsonite/sk, tailed by 100 sx (118 cu.ft) CI "B" with 2% CaCl2.

Drill 6-1/4" hole with air out of intermediate to a TD of 6160'. Log well, run 4-1/2", 10.5#, K-55, ST&C liner from 3750' to 6160'. Cement liner into intermediate csg with 300 sx (471 cu.ft.) 50-50 POZ with 4% gel, 6-1/4# gilsonite/sk, and 10# salt/sk.

Following perforation and treatment of the Mesaverde formation, standard production equipment will be installed. This well will be equipped with cathodic protection. AC cable will be buried along existing roads and pipelines to location. A groundbed will be drilled on location.

IN ABOVE SPACE DESCRIBE PROPOSED PROGRAM: If proposal is to deepen or plug back, give data on present productive zone and proposed new productive zone. If proposal is to drill or deepen directionally, give pertinent data on subsurface locations and measured and true vertical depths. Give blowout preventer program, if any.

24. SIGNED Robert L. Frank TITLE Permit Coordinator DATE July 24, 1987

(This space for Federal or State office use)

PERMIT NO. _____

APPROVAL DATE

APPROVED BY _____
CONDITIONS OF APPROVAL, IF ANY:

TITLE

NMOC

NOV 05 1987

CON. DIV. 3

APPROVED
AS AMENDED

NOV 03 1987

Robert Moore
AREA MANAGER

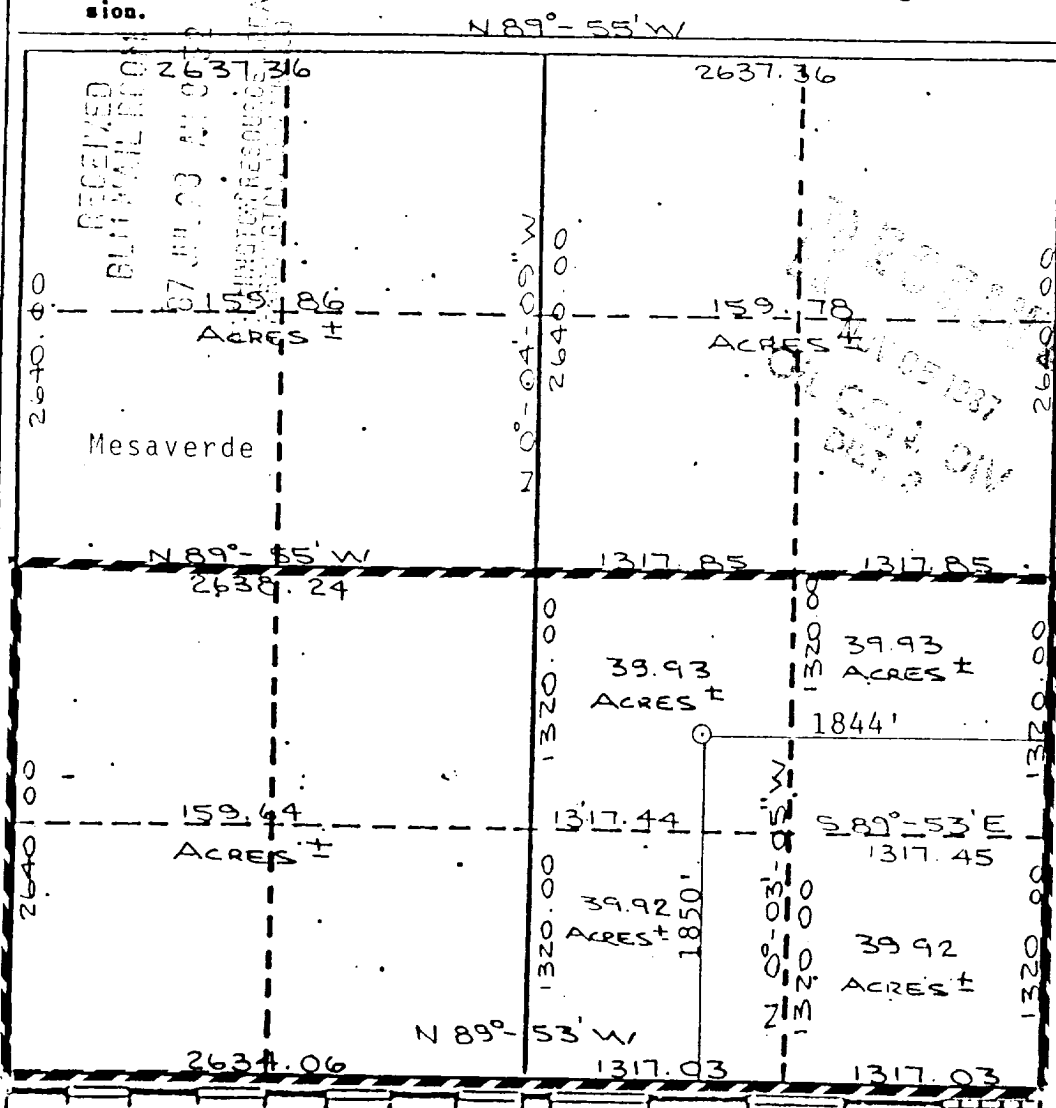
*See Instructions On Reverse Side

Form C-122
Supersedes C-12
Effective 1-1-65

Operator UNION TEXAS PETROLEUM		Lease MC CRODEN "A"		Well No. 8-A
Unit Letter J	Section 9	Township 25N	Range 3W	County RIO ARRIBA
Actual Façade Location of Well				
1850 feet from the South line and		1844 feet from the East line		
Ground Level Elev. 7204	Producing Formation Mesaverde	Pool Blanco	Dedicated Acres 320.28 (S/2) Acres	

- ☐ Yes ☐ No If answer is "yes," type of consolidation

No allowable will be assigned to the well until all interests have been consolidated (by communitization, unitization, forced-pooling, or otherwise) or until a non-standard unit, eliminating such interests, has been approved by the Commission.



I hereby certify that the information contained herein is true and complete to the best of my knowledge and belief.

Robert C. Frank

Name _____

Robert C. Frank

Position

Permit Coordinator

Company

Union Texas Petroleum

Date _____

July 21, 1987

CIL B. TUL

I hereby certify that the well location shown on this plot was plotted from field notes of actual surveys made by me or under my supervision, and that the same is true and correct to the best of my knowledge and belief.

Cecil B. Tullie.

Date Surveyed _____

June 30, 1987

Registered Professional Engineer
and/or Land Surveyor

Cecil B. Tullis

Certificate No.