

STATE OF NEW MEXICO
ENERGY AND MINERALS DEPARTMENT
OIL CONSERVATION DIVISION
P. O. BOX 2088
SANTA FE, NEW MEXICO 87501

Form C-101
Revised 10-1-78

NO. OF COPIES RECEIVED	
DISTRIBUTION	
SANTA FE	
FILE	
U.S.G.S.	
LAND OFFICE	
OPERATOR	

APPROVAL EXPIRES 11-25-88
UNLESS DRILLING IS COMMENCED.
SPUD NOTICE MUST BE SUBMITTED
WITHIN 60 DAYS

5A. Indicate Type of Lease
STATE ☐ FEE ☒

5. State Oil & Gas Lease No.

APPLICATION FOR PERMIT TO DRILL, DEEPEN OR PLUG BACK

1a. Type of Work DRILL <input checked="" type="checkbox"/> DEEPEN <input type="checkbox"/> PLUG BACK <input type="checkbox"/>		7. Unit Agreement Name
b. Type of Well OIL WELL <input checked="" type="checkbox"/> GAS WELL <input type="checkbox"/> OTHER <input type="checkbox"/> SINGLE ZONE <input checked="" type="checkbox"/> MULTIPLE ZONE <input type="checkbox"/>		8. Farm or Lease Name Wynona
2. Name of Operator T H McELVAIN OIL & GAS PROPERTIES		9. Well No. #1
3. Address of Operator Post Office Box 2148, Santa Fe, New Mexico 87504-2148		10. Field and Pool, or Wildcat West Lindrich Gallup-Dakota
4. Location of Well UNIT LETTER <u>L</u> LOCATED <u>1650</u> FEET FROM THE <u>South</u> LINE AND <u>450</u> FEET FROM THE <u>West</u> LINE OF SEC. <u>25</u> TWP. <u>25N</u> RGE. <u>3W</u> NMPM		12. County Rio Arriba
19. Proposed Depth 8400 +/-		19A. Formation Dakota
20. Rotary or C.T. Rotary		
21. Elevations (show whether DT, RT, etc.) 7077' GL	21A. Kind & Status Plug. Bond One Well	22. Approx. Date Work will start May 25, 1988

PROPOSED CASING AND CEMENT PROGRAM

SIZE OF HOLE	SIZE OF CASING	WEIGHT PER FOOT	SETTING DEPTH	SACKS OF CEMENT	EST. TOP
12 1/4"	9-5/8" J-55	32#	300' +/-	215sk CLB+2%CaCl	Circulated
8-3/4"	5 1/2" K-55 & N-80	17#	8200' +/-	1703 sks 2 stgs	Circulated

Propose to drill 12 1/4" hole to approximately 300' using natural mud as a circulating medium. Run new 9-5/8" 32# J-55 casing to TD & cement with approx 250 sks Class B+2%CaCl circulated to surface.

BOP to be installed after surface casing cemented. Prior to drilling out of surface casing, BOP & casing to be tested to OCD specifications. All subsequent work will be conducted through BOP.

Drill 7-7/8" hole to TD of approx 8400' using a low solid, non-dispersed mud as circulating medium.

Run Dual Induction SFL Log, Compensated Neutron Formation Density Log, and if warranted, Borehole Televiwer, prior to running 5 1/2" 17# K-55 and N-80 casing to TD with DV tool at approx 5800' KB.

Cement 5 1/2" csg to surface in two stages as follows: 1st stage - 909 cu ft (636 sks) 50/50 Poz-mix w/ 2% gel, 6 1/2 #/sk Gilsonite and 6#/sk salt. 2nd stage - 2156 cu ft (1017 sks) 65/35 Poz-mix w/ 6% gel, 12 1/4 #/sk Gilsonite. Tail in w/ 59 cu ft (50 sks) Class B neat circulated to the surface.

Drill out DV too. & pressure test casing.

Perforate and fracture Gallup & Dakota zones, if warranted. Clean up well. Run new 2-7/8" EUE, 6.5# J-55 tubing to the Dakota. Run pump & rods if necessary. Set pumping unit and tanks.

Test the well and connect to a gathering system.

IN ABOVE SPACE DESCRIBE PROPOSED PROGRAM: IF PROPOSAL IS TO DEEPEN OR PLUG BACK, GIVE DATA ON PRESENT PRODUCTIVE ZONE AND PROPOSED NEW PRODUCTIVE ZONE. GIVE BLOWOUT PREVENTER PROGRAM, IF ANY.

I hereby certify that the information above is true and complete to the best of my knowledge and belief.

Signed George B. Broome Title Geological Engineer Date May 23, 1988

(This space for State Use)

APPROVED BY [Signature] TITLE DEPUTY OIL & GAS INSPECTOR, DIST. #3 DATE MAY 26 1988

CONDITIONS OF APPROVAL, IF ANY:

OIL CONSERVATION DIVISION

STATE OF NEW MEXICO
ENERGY AND MINERALS DEPARTMENT

P. O. BOX 2088

SANTA FE, NEW MEXICO 87501

Form C-102
Revised 10-1-78

All distances must be from the outer boundaries of the Section.

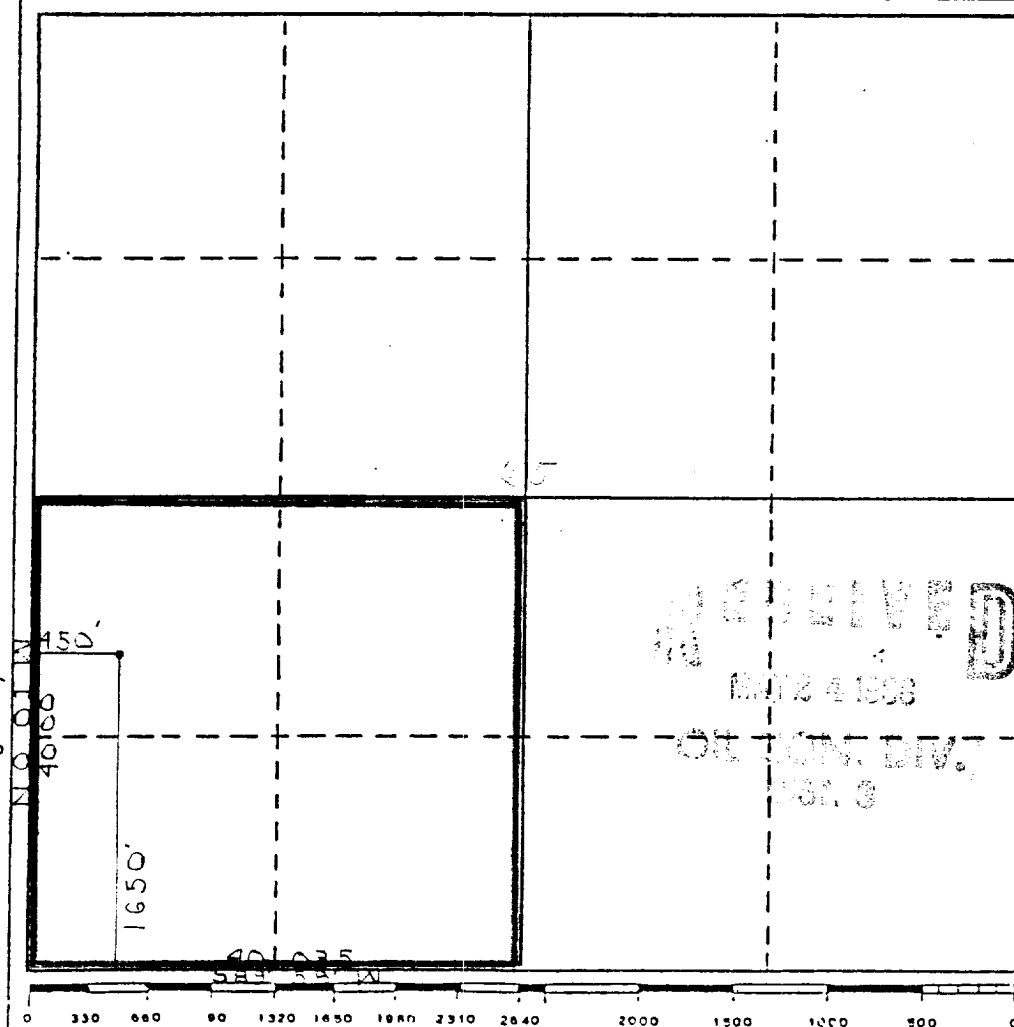
Operator T. H. McElvain Oil & Gas Properties		Lease Wynona		Well No. 1
Unit Letter L	Section 25	Township T25N	Range R3W	County Rio Arriba
Actual Footage Location of Well: 1650 feet from the South line and 450 feet from the West line				
Ground Level Elev. 7077	Producing Formation Gallup - Dakota	Pool West Lindrith Gallup-Dakota	Dedicated Acreage: 160 Acres	

1. Outline the acreage dedicated to the subject well by colored pencil or hachure marks on the plat below.
2. If more than one lease is dedicated to the well, outline each and identify the ownership thereof (both as to working interest and royalty).
3. If more than one lease of different ownership is dedicated to the well, have the interests of all owners been consolidated by communitization, unitization, force-pooling, etc? n/a

☐ Yes ☐ No If answer is "yes," type of consolidation _____

If answer is "no," list the owners and tract descriptions which have actually been consolidated. (Use reverse side of this form if necessary.) _____

No allowable will be assigned to the well until all interests have been consolidated (by communitization, unitization, forced-pooling, or otherwise) or until a non-standard unit, eliminating such interests, has been approved by the Division.



CERTIFICATION

I hereby certify that the information contained herein is true and complete to the best of my knowledge and belief.

Name

George B. Broome

Position

Geological Engineer

Company T H McELVAIN OIL
& GAS PROPERTIES

Date

May 23, 1988

I hereby certify that the well location shown on this plat was plotted from field notes of actual surveys made by me or under my supervision and that the same is true and correct to the best of my knowledge and belief.

Registered Professional
Land Surveyor

Date Surveyed

April 30, 1988

Registered Land Surveyor

R. Howard Daggett

Certificate No.

9679