

UNITED STATES
DEPARTMENT OF THE INTERIOR
GEOLOGICAL SURVEY

APPLICATION FOR PERMIT TO DRILL, DEEPEN, OR PLUG BACK

1a. TYPE OF WORK

DRILL ☒DEEPEN ☐PLUG BACK ☐

b. TYPE OF WELL

OIL
WELL ☒GAS
WELL ☐

OTHER

SINGLE
ZONE ☒MULTIPLE
ZONE ☐

2. NAME OF OPERATOR

MESA PETROLEUM COMPANY

3. ADDRESS OF OPERATOR

1660 Lincoln 2800 Lincoln Center, Denver, Colorado 80264

4. LOCATION OF WELL (Report location clearly and in accordance with any State requirements*)

At surface

570'N & 340'E

At proposed prod. zone

same

14. DISTANCE IN MILES AND DIRECTION FROM NEAREST TOWN OR POST OFFICE*

15. DISTANCE FROM PROPOSED*

LOCATION TO NEAREST
PROPERTY OR LEASE LINE, FT.
(Also to nearest drlg. unit line, if any)18. DISTANCE FROM PROPOSED LOCATION*
TO NEAREST WELL, DRILLING, COMPLETED,
OR APPLIED FOR, ON THIS LEASE, FT.

21. ELEVATIONS (Show whether DF, RT, GR, etc.)

7372 GR

23.

PROPOSED CASING AND CEMENTING PROGRAM

| SIZE OF HOLE | SIZE OF CASING | WEIGHT PER FOOT | SETTING DEPTH | QUANTITY OF CEMENT |
|--------------|----------------|-----------------|---------------|--------------------|
| 12 1/4 | 8 5/8 | 24 | 250 | 250 |
| 7 7/8 | 4 1/2 | 10.5 | 5750 | 950 |

(See attachments)

Gas under this lease is dedicated to a contract.



IN ABOVE SPACE DESCRIBE PROPOSED PROGRAM: If proposal is to deepen or plug back, give data on present productive zone and proposed new productive zone. If proposal is to drill or deepen directionally, give pertinent data on subsurface locations and measured and true vertical depths. Give blowout preventer program, if any.

24.

SIGNED

John Alexander

TITLE Agent

DATE 4/15/81

(This space for Federal or State office use)

PERMIT NO.

APPROVAL DATE

APPROVED BY

TITLE

CONDITIONS OF APPROVAL, IF ANY:

NMOC

OIL CONSERVATION DIVISION

STATE OF NEW MEXICO
ENERGY AND MINERALS DEPARTMENTP. O. BOX 7088
SANTA FE, NEW MEXICO 87501Form C-107
Revised 10-1-71

All distances must be from the outer boundaries of the Section.

| | | | | |
|------------------------------------------------------------------------------------------------------------------------------|--------------------------------------|-----------------------------------------|---------------------------------------|-----------------------------|
| Operator MESA PETROLEUM COMPANY | | Lease SOUTH BLANCO FEDERAL 31 | | Well No. 3 |
| Unit Letter A | Section 31 | Township 24N | Range 7W | County Rio Arriba |
| Actual Footage Location of Well: 570 feet from the North line and 200 feet from the East line | | | | |
| Ground Level Elev: 7374 | Producing Formation Gallup | Pool Lybrook Gallup Ext. | Dedicated Acreage: 40 Acres | |

1. Outline the acreage dedicated to the subject well by colored pencil or hachure marks on the plat below.
2. If more than one lease is dedicated to the well, outline each and identify the ownership thereof (both as to working interest and royalty).
3. If more than one lease of different ownership is dedicated to the well, have the interests of all owners been consolidated by communitization, unitization, force-pooling, etc?

☐ Yes ☐ No If answer is "yes," type of consolidation

If answer is "no," list the owners and tract descriptions which have actually been consolidated: (Use reverse side of this form if necessary.)

No allowable will be assigned to the well until all interests have been consolidated (by communitization, unitization, forced-pooling, or otherwise) or until a non-standard unit, eliminating such interests, has been approved by the Commission.

| | | |
|-------------------------------------------------------------------------------------------------------------------------------------------------------------------------------|--|-------------------------------------------------------------------------------------------------------------------------------------------------------------------------------|
| <div style="position: relative; height: 100px;"> <div style="position: absolute; top: 0; right: 0; border: 1px solid black; padding: 5px;"> 570' ● 200' </div> </div> | | <div style="position: relative; height: 100px;"> <div style="position: absolute; top: 0; right: 0; border: 1px solid black; padding: 5px;"> 570' ● 200' </div> </div> |
| | | |
| Sec. | | 31 |
| <div style="position: relative; height: 100px;"> <div style="position: absolute; top: 0; right: 0; border: 1px solid black; padding: 5px;"> 570' ● 200' </div> </div> | | <div style="position: relative; height: 100px;"> <div style="position: absolute; top: 0; right: 0; border: 1px solid black; padding: 5px;"> 570' ● 200' </div> </div> |
| | | |

Scale: 1"=1000'

CERTIFICATION

I hereby certify that the information contained herein is true and complete to the best of my knowledge and belief.

Name

John Alexander

Position

Agent

Company

MESA PETROLEUM CO.

Date

8/24/81

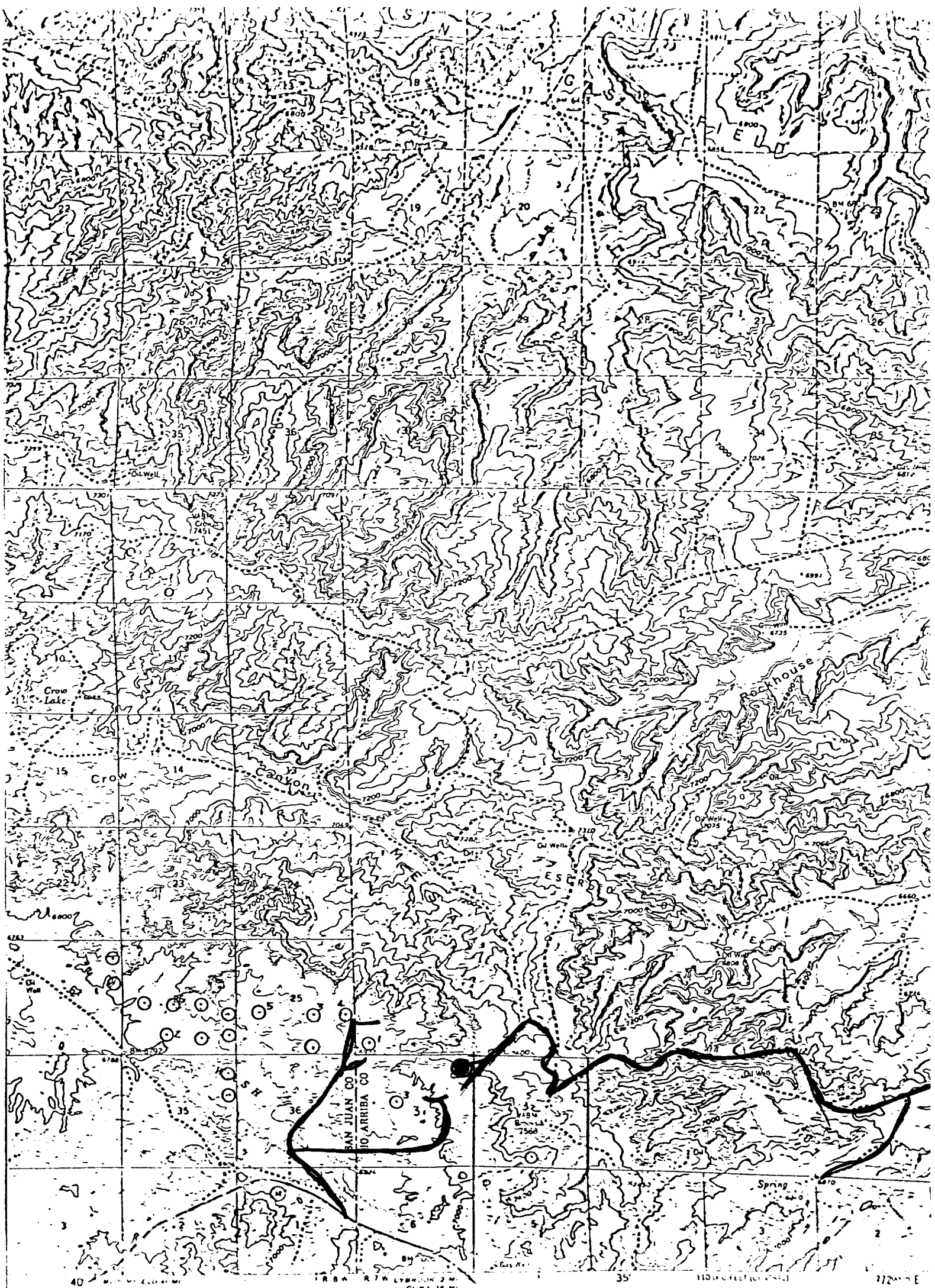
I hereby certify that the well location shown on this plat was plotted from field notes of actual surveys made by me or under my supervision, and that the same is true and correct to the best of my knowledge and belief.

Date Surveyed

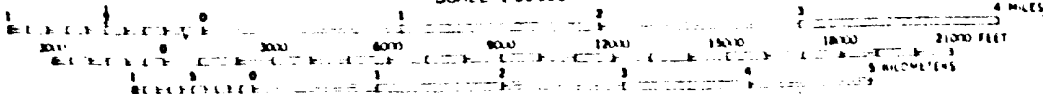
REGISTERED LAND
AUGUST 13, 1981
Registered Professional Engineer
and Land Surveyor

30
Fred B. Kerr, Jr.

Certified to:
B. KERR, JR.
3950



SCALE 1:62,500



CONTOUR INTERVAL 40 FEET
DATUM IS MEAN SEA LEVEL

Vicinity Map for
MESA PETROLEUM CO. #3 SOUTH BLANCO-FEDERAL 31
570'FNL 340'FEL Sec. 31-T24N-R7W
RIO ARRIBA COUNTY, NEW MEXICO

