

Form 3160-3  
(November 1983)  
(formerly 9-331C)

UNITED STATES  
DEPARTMENT OF THE INTERIOR  
BUREAU OF LAND MANAGEMENT

SUBMIT IN TRIPLICATE\*

FORM APPROVED  
Budget Bureau No. 1004-0136  
Expires August 31, 1985

30-039-25085

APPLICATION FOR PERMIT TO DRILL, DEEPEN, OR PLUG BACK

1a. TYPE OF WORK

DRILL ☒ DEEPEN ☐ PLUG BACK ☐

b. TYPE OF WELL

OIL GAS SINGLE MULTIPLE  
WELL ☒ WELL ☐ OTHER ZONE ☒ ZONE ☐

2. Name of Operator

Bannon Energy Inc., c/o Daggett & Chenault Inc.

3. ADDRESS OF OPERATOR

3539 E. 30TH St., Ste. 7B, Farmington, NM 87401

4. LOCATION OF WELL (Report location clearly and in accordance with any State Requirements.)\*

At surface

Unit J, 1881' FSL, 1717' FEL, Sec. 25, T24N-R7W

At proposed prod. zon Same

14. DISTANCE IN MILES AND DIRECTION FROM NEAREST TOWN OR POST OFFICE\*

Approximately 4 mi. Northeast of Escrito Trading Post

15. DISTANCE FROM PROPOSED\*  
LOCATION TO NEAREST  
PROPERTY OR LEASE LINE FT.

(Also to nearest drlg. unit line, if any) 800 Ft.

18. DISTANCE FROM PROPOSED LOCATION\*  
TO NEAREST WELL, DRILLING, COMPLETED,  
OR APPLIED FOR, ON THIS LEASE, FT 700 Ft.

21. ELEVATIONS (Show whether DF, RT, GR, etc.)

6945' GR

16. NO. OF ACRES IN LEASE

1080

19. PROPOSED DEPTH

5800'

5. LEASE DESIGNATION AND SERIAL  
SF 078532

6. IF INDIAN, ALLOTTEE OR TRIBE N

7. UNIT AGREEMENT NAME

8. FARM OR LEASE NAME

Mesa 25

9. WELL NO.

6

10. FIELD AND POOL, OR WILDCAT

Escrito/Gallup

11. SEC., T., R., M., OR BLK.

J Section 25, T24N-R7W

12. COUNTY OR PARISH

Rio Arriba

13. STATE

NM

17. NO. OF ACRES ASSIGNED  
TO THIS WELL

JT W/ #2

20. ROTARY OR CABLE TOOLS

Rotary

22. APPROX. DATE WORK WILL STAR

8-15-91

PROPOSED CASING AND CEMENTING PROGRAM

SIZE OF HOLE	SIZE OF CASING	WEIGHT PER FOOT	SETTING DEPTH	QUANTITY OF CEMENT
12-1/4"	8-5/8"	24.0 lb. J-55	300'	Cement to Surface
7-7/8"	4-1/2"	11.6 lb. K-55	5800'	800 sx-volume to be calculated
				subsequent to logging and
				circulated to surface

Well to be drilled to penetrate the Gallup formation. All producing intervals in the Gallup will be stimulated as necessary.

EXHIBITS:

- "A" Location and Elevation Plat
- "B" Ten Point Drilling Program
- "C" Blowout Preventer Diagram
- "D" Multi-Point Requirements of APD
- "E" Site Specific Checklist for Roads  
(Attachment to "E" - Topo Map)

- "F" Drill Rig Layout
- "G" Completion Program Layout
- "H" Location Profile

The gas from this lease is committed.

RECEIVED

JUL 31 1991

OIL CON. DIV.  
DIST. 3

IN ABOVE SPACE DESCRIBE PROPOSED PROGRAM: If proposal is to deepen or plug back, give data on present productive zone and proposed productive zone. If proposal is to drill or deepen directionally, give pertinent data on subsurface locations and measured and true vertical depths. Give blowout preventer program, if any.

24.

SIGNED

*R. Lehaband*

TITLE Vice President of Operations

DATE 7/16/91

(This space for Federal or State office use)

PERMIT NO.

APPROVAL DATE

APPROVED BY

TITLE

CONDITIONS OF APPROVAL, IF ANY:

APPROVED  
AS AMENDED

DATE

JUL 29 1991

AREA MANAGER

Title 18 U.S.C. Section 1001, makes it a crime for any person knowingly and willfully to make to any department or agency of the United States any false, fictitious or fraudulent statements or representations as to any matter within its jurisdiction.

NMOCD

Submit to Appropriate  
District Office  
State Lease - 4 copies  
Fee Lease - 3 copies

State of New Mexico  
Energy, Minerals and Natural Resources Department

Form C-102  
Revised 1-1-89

OIL CONSERVATION DIVISION

P.O. Box 2088  
Santa Fe, New Mexico 87504-2088

DISTRICT I  
P.O. Box 1980, Hobbs, NM 88240

DISTRICT II  
P.O. Drawer DD, Artesia, NM 88210

DISTRICT III  
1000 Rio Brazos Rd., Aztec, NM 87410

WELL LOCATION AND ACREAGE DEDICATION PLAT

All Distances must be from the outer boundaries of the section

Operator <b>BANNON ENERGY, INC.</b>		Lease <b>MESA 25</b>		Well No. <b>6</b>
Unit Letter <b>J</b>	Section <b>25</b>	Township <b>T.24 N.</b>	Range <b>R.7 W.</b>	County <b>RIO ARriba COUNTY</b>
Actual Footage Location of Well: <b>1881</b> feet from the <b>SOUTH</b> line and <b>1717</b> feet from the <b>EAST</b> line				
Ground level Elev. <b>6945</b>	Producing Formation <b>Gallup</b>	Pool <b>Escrito/Gallup</b>	Dedicated Acreage: <b>80 Acres</b>	

- Outline the acreage dedicated to the subject well by colored pencil or hatchure marks on the plat below.
- If more than one lease is dedicated to the well, outline each and identify the ownership thereof (both as to working interest and royalty).
- If more than one lease of different ownership is dedicated to the well, have the interest of all owners been consolidated by communitization, unitization, force-pooling, etc.?  
☐ Yes ☐ No If answer is "yes" type of consolidation \_\_\_\_\_  
If answer is "no" list the owners and tract descriptions which have actually been consolidated. (Use reverse side of this form if necessary.)  
No allowable will be assigned to the well until all interests have been consolidated (by communitization, unitization, forced-pooling, or otherwise) or until a non-standard unit, eliminating such interest, has been approved by the Division.

OPERATOR CERTIFICATION

I hereby certify that the information contained herein is true and complete to the best of my knowledge and belief.

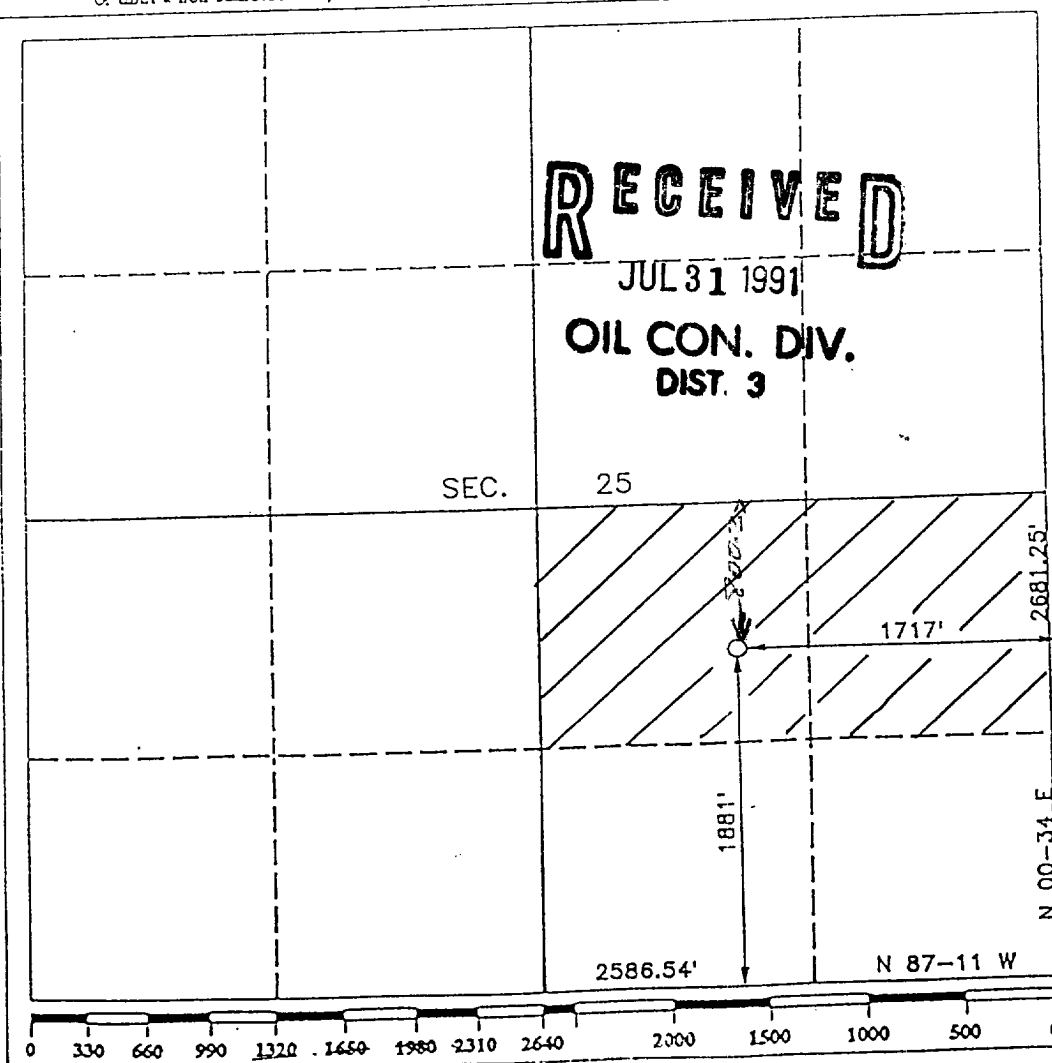
Signature *R. A. Chabaud*  
Printed Name **R. A. Chabaud**  
Position **V. P. Operations**  
Company **Bannon Energy Inc.**  
Date **7/15/91**

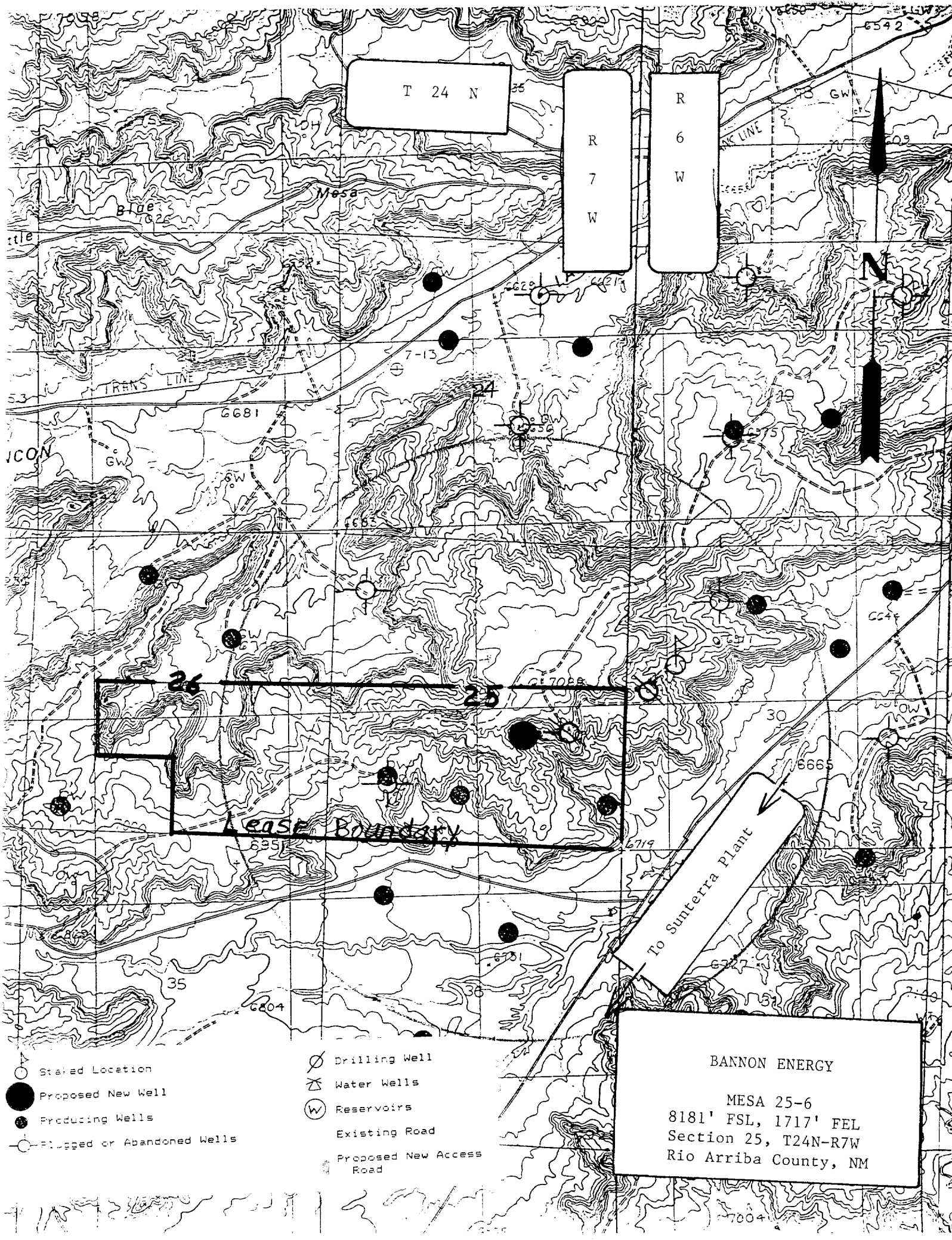
SURVEYOR CERTIFICATION

I hereby certify that the well location shown on this plat was plotted from field notes of actual surveys made by me or under my supervision, and that the same is true and correct to the best of my knowledge and belief.

Date Surveyed  
**JUNE 21, 1991**

Signature *Henry M. Broadhurst, Jr.*  
Professional Surveyor  
New Mexico  
11393  
11399  
PROFESSIONAL SURVEYOR





T 24 N

R 7 W

R 6 W

Lease Boundary

To Sunterra Plant

- Staked Location
- Proposed New Well
- ⊙ Producing Wells
- ⊖ Plugged or Abandoned Wells
- ⊗ Drilling Well
- ⊕ Water Wells
- ⊙ Reservoirs
- Existing Road
- - - Proposed New Access Road

BANNON ENERGY  
MESA 25-6  
8181' FSL, 1717' FEL  
Section 25, T24N-R7W  
Rio Arriba County, NM