

(November 1983)

(formerly 9-331C)

UNITED STATES

DEPARTMENT OF THE INTERIOR
BUREAU OF LAND MANAGEMENT

SUBMIT IN TRIPLICATE*

FORM APPROVED

Budget Bureau No. 1004-0136

Expires August 31, 1985

5-LEASE DESIGNATION AND SERIAL

SF-078534

APPLICATION FOR PERMIT TO DRILL, DEEPEN, OR PLUG BACK

1a. TYPE OF WORK

DRILL ☒DEEPEN ☐PLUG BACK ☐

b. TYPE OF WELL

OIL

GAS

SINGLE

MULTIPLE

WELL ☒WELL ☐

OTHER

ZONE ☒ZONE ☐

2. Name of Operator

Bannon Energy, Inc., C/O Daggett and Chenault, Inc.

3. ADDRESS OF OPERATOR

3539 E. 30th, Ste. 7B, Farmingotn, NM 87401

4. LOCATION OF WELL (Report location clearly and in accordance with any State Requirements. *)

At surface

Unit G, 1676' FNL, 1771' FEL, Sec. 25, T24N-R7W

At proposed prod. zon SAME AS ABOVE

14. DISTANCE IN MILES AND DIRECTION FROM NEAREST TOWN OR POST OFFICE*

Approximately 4 mi. Northeast of Escrito Trading Post

15. DISTANCE FROM PROPOSED*

LOCATION TO NEAREST
PROPERTY OR LEASE LINE FT.

1005'

(Also to nearest drlg. unit line, if any)

18. DISTANCE FROM PROPOSED LOCATION*

TO NEAREST WELL, DRILLING, COMPLETED,
OR APPLIED FOR, ON THIS LEASE, FT 2575'

19. PROPOSED DEPTH

5800'

21. ELEVATIONS (Show whether DF, RT, GR, etc.)

7052' GR

6. IF INDIAN, ALLOTTEE OR TRIBE N

7. UNIT AGREEMENT NAME

8. FARM OR LEASE NAME

Mesa 25

9. WELL NO.

8

10. FIELD AND POOL, OR WILDCAT

Escrito/Gallup

11. SEC., T., R., M., OR BLK.

Unit G, Sec. 25, T24N-R7W

12. COUNTY OR PARISH

Rio Arriba

13. STATE

NM

17. NO. OF ACRES ASSIGNED
TO THIS WELL

w/80

20. ROTARY OR CABLE TOOLS

Rotary

22. APPROX. DATE WORK WILL STAR

Sept. 1, 1991

23. PROPOSED CASING AND CEMENTING PROGRAM

SIZE OF HOLE	SIZE OF CASING	WEIGHT PER FOOT	SETTING DEPTH	QUANTITY OF CEMENT
12-1/4"	8-5/8"	24.0 lb. J-55	300'	Cement to Surface
7-7/8"	4-1/2"	11.6 lb. K-55	5800'	800 sx-volume to be calculated
				subsequent to logging and
				circulated to surface

Well to be drilled to penetrate the Gallup formation. All producing intervals in the Gallup will be stimulated as necessary.

EXHIBITS:

"A" Location and Elevation Plat

"B" Ten Point Drilling Program

"C" Blowout Preventer Diagram

"D" Multi-Point Requirements of APD

"E" Site Specific Checklist for Roads

(Attachment to "E" - Topo Map)

"F" Drill Rig Layout

"G" Completion Program Layout

"H" Location Profile

The gas from this lease is committed.

RECEIVED

JUN 23 1992

OIL CON. DIV.]
DIST. 3

IN ABOVE SPACE DESCRIBE PROPOSED PROGRAM: If proposal is to deepen or plug back, give data on present productive zone and proposed productive zone. If proposal is to drill or deepen directionally, give pertinent data on subsurface locations and measured and true vertical depths. Give blowout preventer program, if any.

24.

SIGNED

R. Lehaband

TITLE V.P. Operations

DATE

8/14/91

(This space for Federal or State office use)

PERMIT NO.

APPROVAL DATE

APPROVED BY

TITLE

CONDITIONS OF APPROVAL, IF ANY:

NMOCD

APPROVED
AS AMENDED

JUN 22 1992

AREA MANAGER

Title 18 U.S.C. Section 1001, makes it a crime for any person knowingly and willfully to make to any department or agency of the United States any false, fictitious or fraudulent statements or representations as to any matter within its jurisdiction.

Submit to Appropriate
District Office
State Lease - 4 copies
Fee Lease - 3 copies

State of New Mexico
Energy, Minerals and Natural Resources Department

Form C-102
Revised 1-1-89

OIL CONSERVATION DIVISION

P.O. Box 2088
Santa Fe, New Mexico 87504-2088

DISTRICT I
P.O. Box 1980, Hobbs, NM 88240

DISTRICT II
P.O. Drawer DD, Artesia, NM 88210

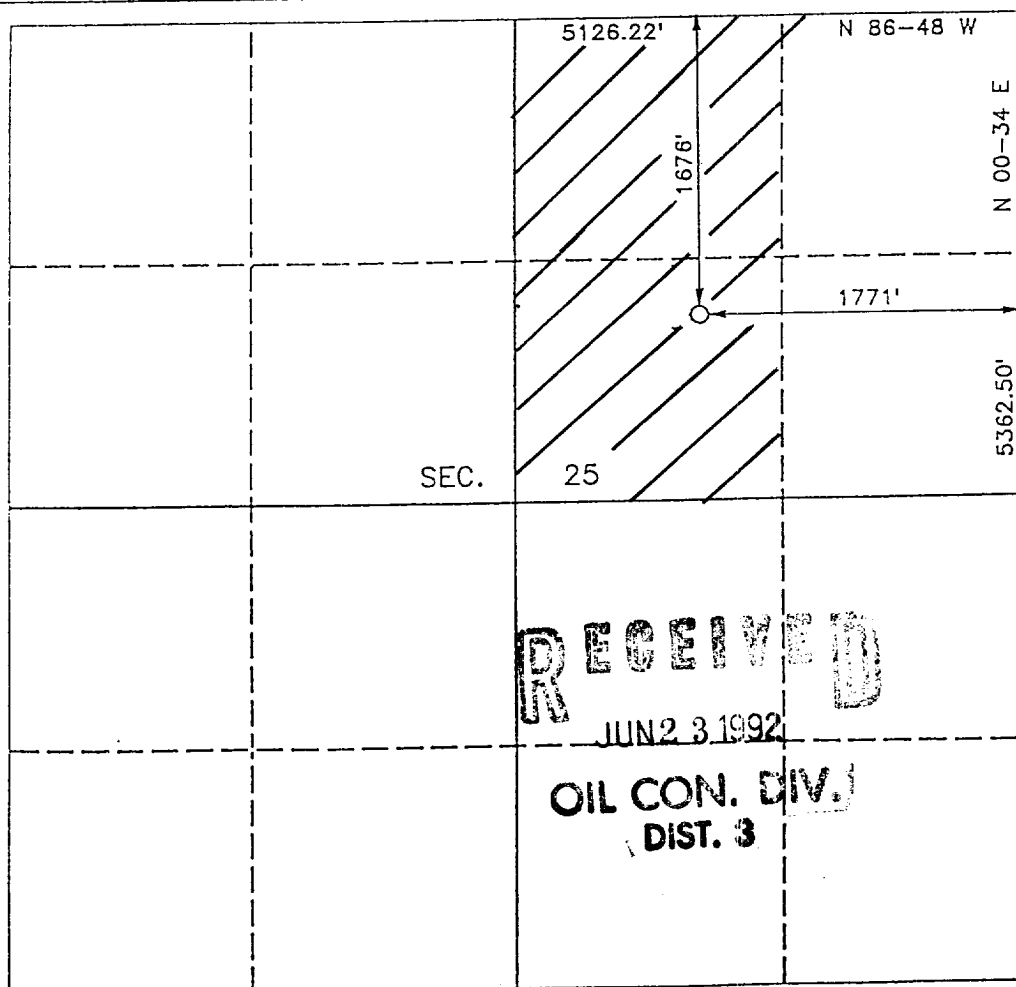
DISTRICT III
1000 Rio Brazos Rd., Aztec, NM 87410

WELL LOCATION AND ACREAGE DEDICATION PLAT

All Distances must be from the outer boundaries of the section

Operator BANNON ENERGY, INC.		Lease MESA 25		Well No. 8
Unit Letter G	Section 25	Township T.24 N.	Range R.7 W.	County RIO ARRIBA COUNTY
Actual Footage Location of Well: 1676 feet from the NORTH line and 1771 feet from the EAST line				
Ground level Elev. 7052	Producing Formation Gallup	Pool Escrito/Gallup	Dedicated Acreage: 80 Acres	

1. Outline the acreage dedicated to the subject well by colored pencil or hatchure marks on the plat below.
2. If more than one lease is dedicated to the well, outline each and identify the ownership thereof (both as to working interest and royalty).
3. If more than one lease of different ownership is dedicated to the well, have the interest of all owners been consolidated by communization, unitization, force-pooling, etc.?
☐ Yes ☐ No If answer is "yes" type of consolidation _____
If answer is "no" list the owners and tract descriptions which have actually been consolidated. (Use reverse side of this form if necessary.) _____
No allowable will be assigned to the well until all interests have been consolidated (by communization, unitization, forced-pooling, or otherwise) or until a non-standard unit, eliminating such interest, has been approved by the Division.



OPERATOR CERTIFICATION

I hereby certify that the information contained herein is true and complete to the best of my knowledge and belief.

Signature *R.A. Chabaud*

Printed Name
R. A. Chabaud

Position
V. P. Operations

Company
Bannon Energy Inc

Date

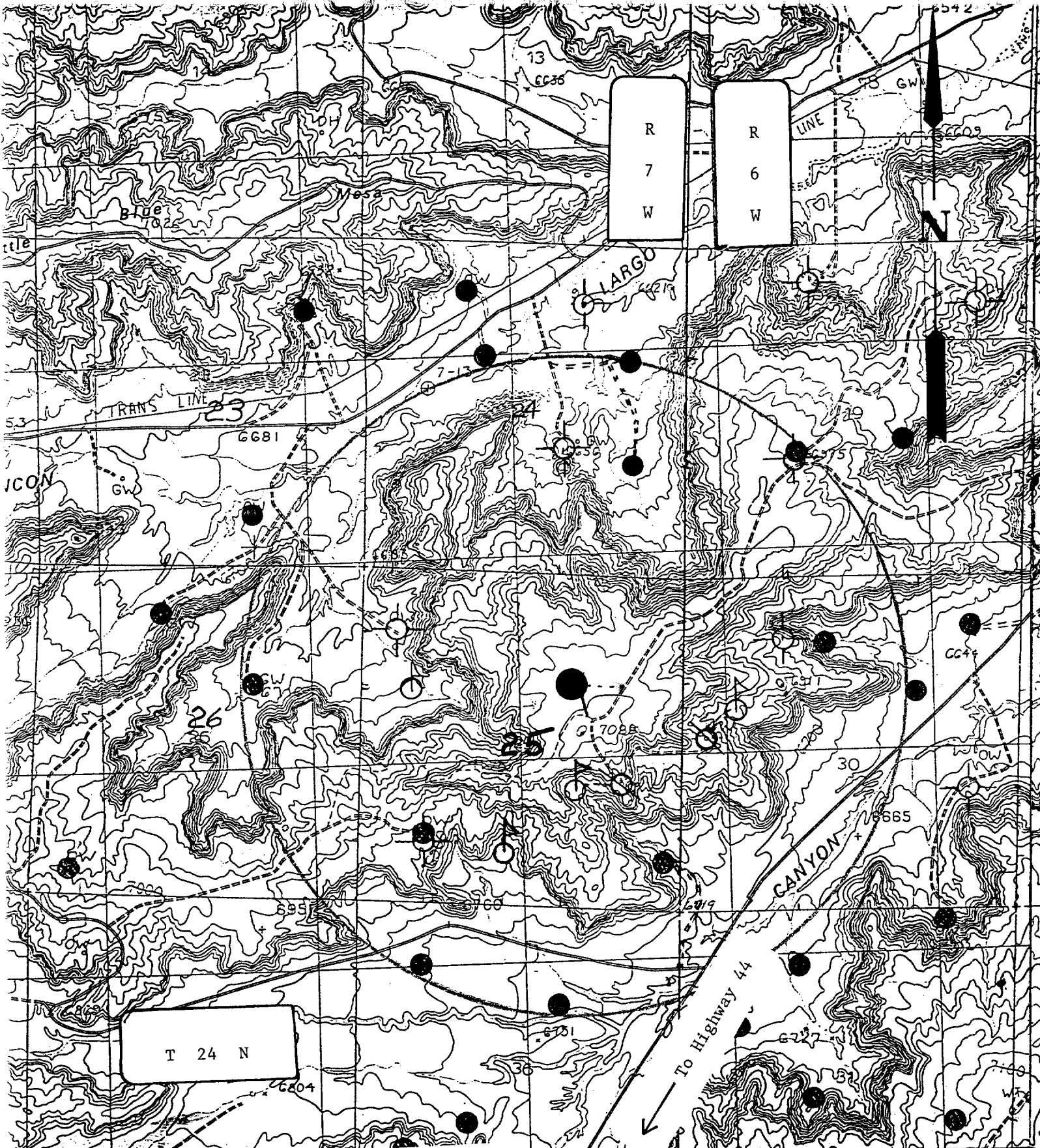
SURVEYOR CERTIFICATION

I hereby certify that the well location shown on this plat was plotted from field notes of actual surveys made by me or under my supervision, and that the same is true and correct to the best of my knowledge and belief.

Date Surveyed
JULY 26, 1991

Signature & Seal of Professional Surveyor
HENRY E. BROADHURST, JR.

Professional Surveyor
New Mexico
Certificate No. **11393**
Professional Surveyor



T 24 N

R
7
W

R
6
W

- Staked Location
- Proposed New Well
- Producing Wells
- Plugged or Abandoned Wells
- Proposed Pipeline
- Drilling Well
- Water Wells
- Reservoirs
- Existing Road
- Proposed New Access Road

BANNON ENERGY
 MESA 25-8
 1676' FNL, 1773' FEL
 SEC. 25, T24N-R7W
 RIO ARRIBA COUNTY, NM