


UNITED STATES
DEPARTMENT OF THE INTERIOR
BUREAU OF LAND MANAGEMENT

APPLICATION FOR PERMIT TO DRILL, DEEPEN, OR PLUG BACK

1a. Type of Work DRILL	5. Lease Number SF-075985 Unit Reporting Number
1b. Type of Well GAS	6. If Indian, All. or Tribe
2. Operator MERIDIAN OIL 14538	7. Unit Agreement Name Canyon Largo Unit
3. Address & Phone No. of Operator PO Box 4289, Farmington, NM 87499 (505) 326-9700	8. Farm or Lease Name Canyon Largo Unit 9. Well Number 239E
4. Location of Well 1795' ENL, 1455' FWL Latitude 36° 25' 53", Longitude 107° 25' 15"	10. Field, Pool, Wildcat Blanco MV/Basin Dk 71597- 11. Sec., Twn, Rge, Mer. (NMPM) Sec 1, T-25-N, R-6-W API # 30-039-55549
14. Distance in Miles from Nearest Town 12 miles to Counselors	12. County Rio Arriba 13. State NM
15. Distance from Proposed Location to Nearest Property or Lease Line 1455'	
16. Acres in Lease	17. Acres Assigned to Well 320.6 W/2 12/2 320.60
18. Distance from Proposed Location to Nearest Well, Drig, Compl, or Applied for on this Lease 600'	
19. Proposed Depth 7485'	20. Rotary or Cable Tools Rotary
21. Elevations (DF, FT, GR, Etc.) 6677' GR	22. Approx. Date Work will Start 3rd quarter 1995
23. Proposed Casing and Cementing Program See Operations Plan attached	DRILLING OPERATIONS AUTHORIZED ARE SUBJECT TO COMPLIANCE WITH ATTACHED "GENERAL REQUIREMENTS"
24. Authorized by:  Regional Drilling Engineer	Date 8/24/95

PERMIT NO. _____ APPROVAL DATE _____
APPROVED BY _____ TITLE _____ DATE _____

Archaeological Report submitted by Arboles Contract Archaeology Technical Report #794 date 07-21-95
Threatened and Endangered Species Report submitted by Ecosphere Environmental Services dated 08-21-95
NOTE: This format is issued in lieu of U.S. BLM Form 3160-3

APPROVED
AS AMENDED

NOV 27 1995

DISTRICT MANAGER

District I
PO Box 1980, Hobbs, NM 88241-1980
District II
PO Drawer DD, Artesia, NM 88211-0719
District III
1000 Rio Brazos Rd., Aztec, NM 87410
District IV
PO Box 2088, Santa Fe, NM 87504-2088

State of New Mexico
Energy, Minerals & Natural Resources Department

OIL CONSERVATION DIVISION
PO Box 2088
Santa Fe, NM 87504-2088

Form C-
Revised February 21, 1991
Instructions on b
Submit to Appropriate District Of
State Lease - 4 Co
Fee Lease - 3 Co

☐ AMENDED REPC

WELL LOCATION AND ACREAGE DEDICATION PLAT

API Number 30-039-25344	Pool Code 72319/71599	Pool Name Blanco Mesaverde/Basin Dakota
Property Code 6886	Property Name Canyon Largo Unit	Well Number 239E
OGRID No. 14538	Operator Name MERIDIAN OIL INC.	Elevation 6677'

¹⁰ Surface Location

UL or lot no.	Section	Township	Range	Lot Ida	Feet from the	North/South line	Feet from the	East/West line	County
F	1	25 N	6 W		1785	North	1455	West	Rio Arr

¹¹ Bottom Hole Location If Different From Surface

UL or lot no.	Section	Township	Range	Lot Ida	Feet from the	North/South line	Feet from the	East/West line	County

¹² Dedicated Acres W/320.60-W/320.60	¹³ Joint or Infill	¹⁴ Consolidation Code	¹⁵ Order No.
--	-------------------------------	----------------------------------	-------------------------

NO ALLOWABLE WILL BE ASSIGNED TO THIS COMPLETION UNTIL ALL INTERESTS HAVE BEEN CONSOLIDATE
OR A NON-STANDARD UNIT HAS BEEN APPROVED BY THE DIVISION

1318.02' 1305.48' 2610.96'	4	3	2	1	5300.46'	1785'	1455'	SF-078885	1	RECEIVED NOV 2 9 1995 OIL CONSERVATION DIVISION	¹⁷ OPERATOR CERTIFICATION I hereby certify that the information contained herein is true and complete to the best of my knowledge and belief. Signature: <i>Peggy Bradfield</i> Printed Name: Peggy Bradfield Title: Regulatory Administrator Date: 8-25-95
											¹⁸ SURVEYOR CERTIFICATION I hereby certify that the well location shown on this plat was plotted from field notes of actual surveys made by me or under my supervision, and that the same is true and correct to the best of my belief. 7-20-95 Date of Survey: 7-20-95 Signature and Seal of Surveyor: <i>Herbert C. Edwards</i> Certificate Number: 8857
					5262.84'						

OPERATIONS PLAN

Well Name: Canyon Largo Unit #239E
Location: 1785' FNL, 1455' FWL Section 2, T-25-N, R-6-W
 Rio Arriba County, New Mexico
 Latitude 36° 25' 53", Longitude 107° 25' 16"
Formation: Blanco Mesa Verde/Basin Dakota
Elevation: 6677' GL

<u>Formation Tops:</u>	<u>Top</u>	<u>Bottom</u>	<u>Contents</u>
Surface	San Jose	695'	
Ojo Alamo	695'	2189'	aquifer
Kirtland	2189'	2617'	
Fruitland	2617'	2849'	gas
Pictured Cliffs	2849'	2984'	gas
Lewis	2984'	3725'	
Chacra	3725'	4509'	gas
Mesa Verde	4509'	4523'	salt water
Menefee	4523'	5081'	salt water
Point Lookout	5081'	5293'	gas & oil
Manocs	5293'	6235'	
Gallup	6235'	6687'	gas & oil
Juana Lopez	6687'	7009'	gas
Greenhorn	7009'	7065'	gas & oil
Graneros	7065'	7117'	gas
Two Wells	7117'	7175'	
Paguate	7175'	7245'	
Cubero	7245'	7327'	
Ercino Canyon	7327'	7445'	
Morrison	7445'		
Total Depth	7485'		

Logging Program:

Mud Logs/Coring/DST -
 Mud logs - 2617' to TD
 Coring - none
 DST - none
 Electric logs - DIL/SP/GR; CDL/CNL/GR; ML

Mud Program:

<u>Interval</u>	<u>Type</u>	<u>Weight</u>	<u>Vis.</u>	<u>Fluid Loss</u>
0- 320'	Spud	8.4-8.9	40-50	no control
320-7485'	LSND	8.4-9.1	30-60	no control

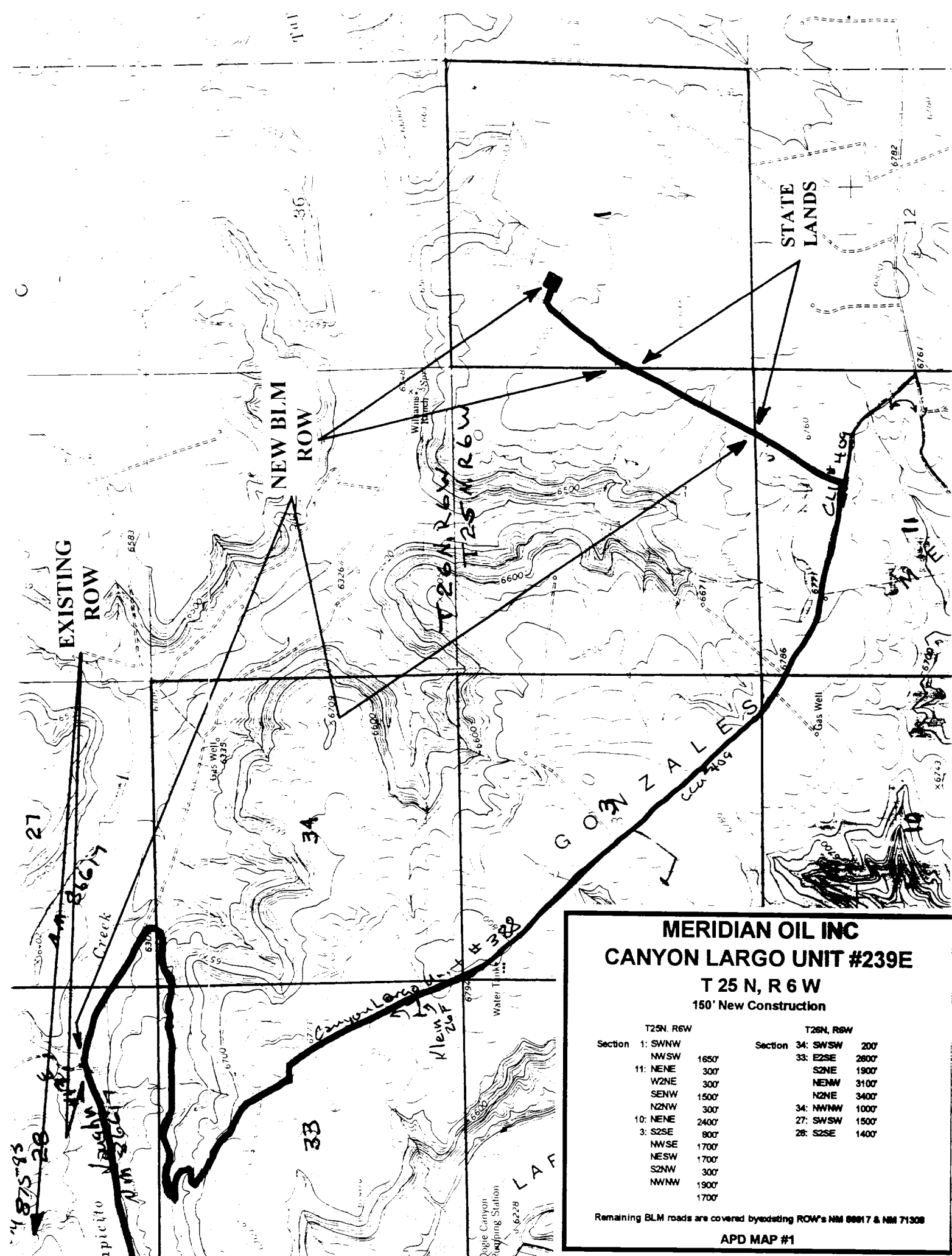
Pit levels will be visually monitored to detect gain or loss of fluid control.

Casing Program:

<u>Hole Size</u>	<u>Depth Interval</u>	<u>Csg. Size</u>	<u>Wt.</u>	<u>Grade</u>
12 1/4"	0' - 320'	8 5/8"	24.0#	K-55
7 7/8"	0' - 7485'	5 1/2"	17.0#	K-55

Tubing Program:

0' - 7485'	1 1/2"	2.90#	J-55 EUE 10rd
0' - 5081'	1 1/2"	2.76#	J-55 IS 10rd



MERIDIAN OIL INC **CANYON LARGO UNIT #239E**

T 25 N, R 6 W
150' New Construction

T25N, R6W			T26N, R6W		
Section	1: SWNW		Section	34: SWSW	200'
	NW5W	1650'		33: E2SE	2800'
11: NENE	300'			S2NE	1900'
	W2NE	300'		NENW	3100'
	SENW	1500'		N2NE	3400'
	N2NW	300'		34: NWNW	1000'
10: NENE	2400'			27: SWSW	1500'
3: S2SE	800'			26: S2SE	1400'
	NWSE	1700'			
	NESW	1700'			
	S2NW	300'			
	NWNW	1900'			
		1700'			

Remaining BLM roads are covered by existing ROW's NM 68817 & NM 71308