

UNITED STATES
DEPARTMENT OF THE INTERIOR
BUREAU OF LAND MANAGEMENT

(Other instructions on
reverse side)

FORM APPROVED
OMB NO. 1004-0136
Expires: February 28, 1995

APPLICATION FOR PERMIT TO DRILL OR DEEPEN

1a. TYPE OF WORK

DRILL ☒

DEEPEN ☐

b. TYPE OF WELL

OIL
WELL ☐

GAS
WELL ☒

OTHER

SINGLE
ZONE ☒

MULTIPLE
ZONE ☐

2. NAME OF OPERATOR

Elm Ridge Resources, Inc. (214) 696-8090

3. ADDRESS AND TELEPHONE NO.

4925 Greenville Ave, Suite 1305, Dallas, Tx 75206

4. LOCATION OF WELL (Report location clearly and in accordance with any State requirements.)

At surface

1970' FNL & 1850' FWL

At proposed prod. zone

Same

14. DISTANCE IN MILES AND DIRECTION FROM NEAREST TOWN OR POST OFFICE*

11 air miles NNE of Counselor, NM

15. DISTANCE FROM PROPOSED*

LOCATION TO NEAREST
PROPERTY OR LEASE LINE, FT.
(Also to nearest drlg. unit line, if any)

1,850'

16. NO. OF ACRES IN LEASE

2,560

17. NO. OF ACRES ASSIGNED

TO THIS WELL

37.80 320

18. DISTANCE FROM PROPOSED LOCATION*
TO NEAREST WELL, DRILLING, COMPLETED,
OR APPLIED FOR, ON THIS LEASE, FT.

1,436'

19. PROPOSED DEPTH

7,250'

20. ROTARY OR CABLE TOOLS

Rotary

21. ELEVATIONS (Show whether DF, RT, GR, etc.)

6,760' ungraded ground

22. APPROX. DATE WORK WILL START*

Feb. 1, 1998

23.

PROPOSED CASING AND CEMENTING PROGRAM

SIZE OF HOLE	GRADE SIZE OF CASING	WEIGHT PER FOOT	SETTING DEPTH	QUANTITY OF CEMENT
12-1/4"	8-5/8" (K-55)	24#	350'	≈250 cu ft & to surface
7-7/8"	4-1/2" (J-55)	10.5#	7,250'	≈2,990 cu ft & to surface

RECEIVED
DEC 19 1997

WIL CON. DIV.
DIST. 3

IN ABOVE SPACE DESCRIBE PROPOSED PROGRAM: If proposal is to deepen, give data on present productive zone and proposed new productive zone. If proposal is to drill or deepen directionally, give pertinent data on subsurface locations and measured and true vertical depths. Give blowout preventer program, if any.

cc: BIA, BLM (& OCD), Elm (D&F), Tribe

24.

SIGNED

Consultant (505) 466-8120

11-15-97

TITLE

DATE

(This space for Federal or State office use)

PERMIT NO.

APPROVAL DATE

Application approval does not warrant or certify that the applicant holds legal or equitable title to those rights in the subject lease which would entitle the applicant to conduct operations thereon.
CONDITIONS OF APPROVAL, IF ANY:

(Original Signed) HECTOR A. VILLALOBOS

APPROVED BY

TITLE

DATE

12-16-97

*See Instructions On Reverse Side

Title 18 U.S.C. Section 1001, makes it a crime for any person knowingly and willfully to make to any department or agency of the United States any false, fictitious or fraudulent statements or representations as to any matter within its jurisdiction.

District I
PO Box 1980, Hobbs, NM 88241-1980
District II
PO Drawer DD, Artesia, NM 88211-0719
District III
1000 Rio Brazos Rd., Aztec, NM 87410
District IV
PO Box 2088, Santa Fe, NM 87504-2088

State of New Mexico
Energy, Minerals & Natural Resources Department

OIL CONSERVATION DIVISION
PO Box 2088
Santa Fe, NM 87504-2088

Form C-10
Revised February 21, 1997
Instructions on back
Submit to Appropriate District Office
State Lease - 4 Copies
Fee Lease - 3 Copies

☐ AMENDED REPORT

WELL LOCATION AND ACREAGE DEDICATION PLAT

1 API Number 30-039-25797		2 Pool Code 71599		3 Pool Name Basin Dakota	
4 Property Code 22558		5 Property Name JICARILLA 10			6 Well Number 1-R
7 OGRID No. 149052		8 Operator Name ELM RIDGE RESOURCES			9 Elevation 6760'

10 Surface Location

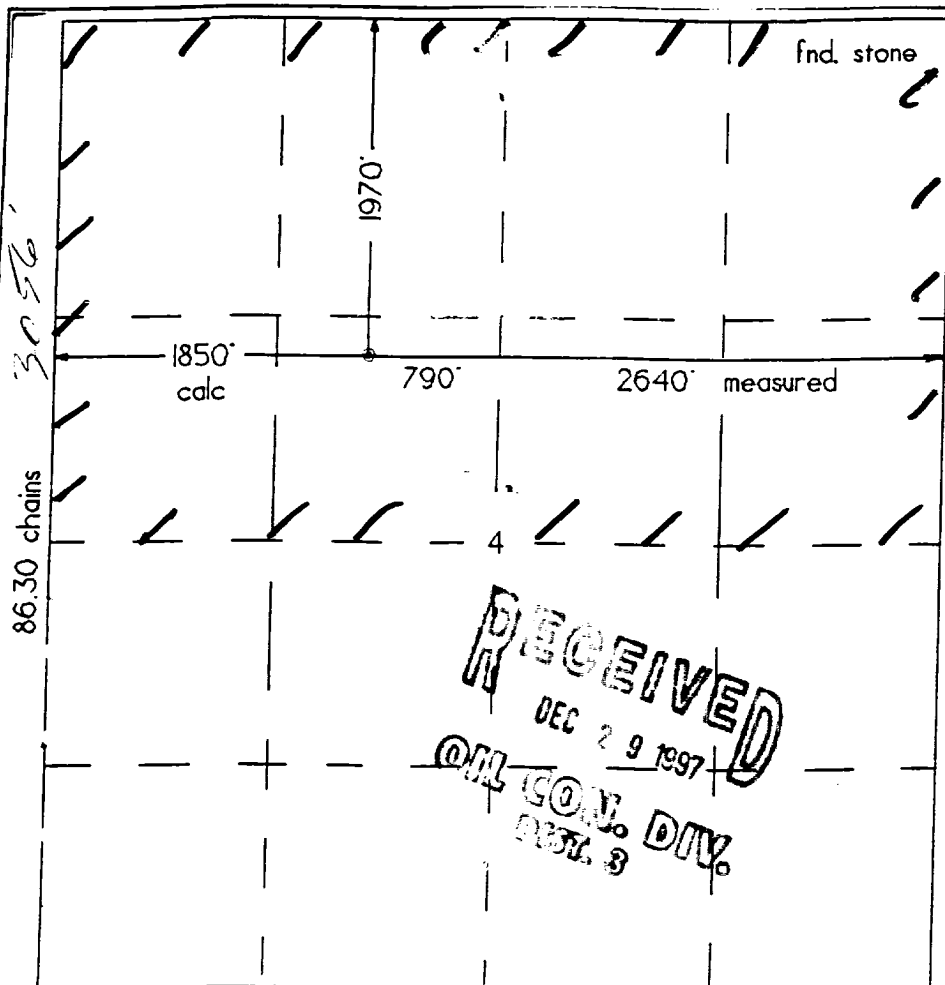
UL or lot no.	Section	Township	Range	Lot Idn	Feet from the	North/South line	Feet from the	East/West line	County
F	4	24 N	5 W		1970	North	1850	West	Rio Arriba

11 Bottom Hole Location If Different From Surface

UL or lot no.	Section	Township	Range	Lot Idn	Feet from the	North/South line	Feet from the	East/West line	County

12 Dedicated Acres N 371.80	13 Joint or Infill	14 Consolidation Code	15 Order No.
--------------------------------	--------------------	-----------------------	--------------

NO ALLOWABLE WILL BE ASSIGNED TO THIS COMPLETION UNTIL ALL INTERESTS HAVE BEEN CONSOLIDATED
OR A NON-STANDARD UNIT HAS BEEN APPROVED BY THE DIVISION



17 OPERATOR CERTIFICATION

I hereby certify that the information contained herein is true and complete to the best of my knowledge and belief

Signature
Brian Wood

Printed Name
Brian Wood

Title
Consultant

Date
November 15, 1997

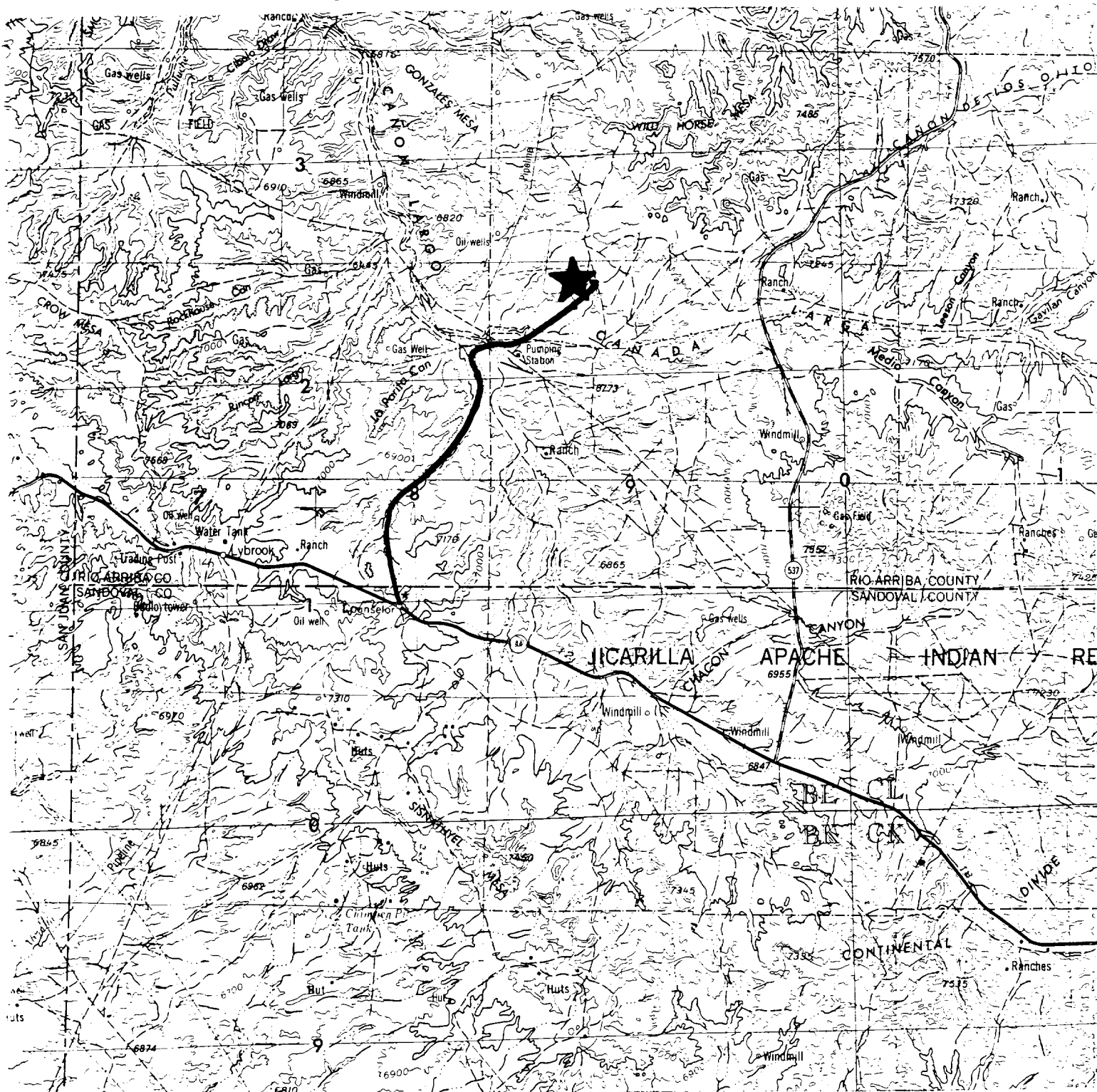
18 SURVEYOR CERTIFICATION

I hereby certify that the well location shown on this plat was plotted from field notes of actual surveys made by me or under my supervision, and that the same is true and correct to the best of my belief.

Date of Survey
9-3-97

Signature
Seal of 6844

Certificate Number
6844



~

PERMITS WEST, INC.
PROVIDING PERMITS FOR LAND USERS