

UNITED STATES
DEPARTMENT OF THE INTERIOR
BUREAU OF LAND MANAGEMENT

FORM APPROVED
OMB NO. 1004-0136
Expires February 28, 1995

APPLICATION FOR PERMIT TO DRILL OR DEEPEN

1a TYPE OF WORK

DRILL ☒

DEEPEN ☐

b TYPE OF WELL

OIL WELL ☐

GAS WELL ☒

OTHER

SINGLE ZONE ☒

MULTIPLE ZONE ☐

2 NAME OF OPERATOR

Conoco Inc.

3 ADDRESS AND TELEPHONE NO

10 Desta Drive, Suite 649W, Midland, TX 79705; 915/686-5515

4 LOCATION OF WELL (Report location clearly and in accordance with any State requirements*)

At surface

1670' FSL & 2410' FWL

At proposed prod. Zone

1670' FSL & 2410' FWL

14 DISTANCE IN MILES AND DIRECTION FROM NEAREST TOWN OR POST OFFICE*

15/ DISTANCE FROM PROPOSED*

LOCATION TO NEAREST
PROPERTY OR LEASE LINE, FT
(Also to nearest drlg. Unit line, if any)

6 NO. OF ACRES IN LEASE

640 +/-

18 DISTANCE FROM PROPOSED LOCATION*
TO NEAREST WELL, DRILLING, COMPLETED,
OR APPLIED FOR, ON THIS LEASE, FT.

9. PROPOSED DEPTH

5647'

21 ELEVATIONS (Show whether DF, RT, GR, etc.)

6661'

5 LEASE DESIGNATION AND SERIAL NO

Cont 147

6 IF INDIAN, ALLOTTEE OR TRIBE NAME

Jicarilla Apache

7 UNIT AGREEMENT NAME

AXI Apache J

8 FARM OR LEASE NAME WELL NO

22B

9 API WELL NO

30 - 039-26498

10 FIELD AND POOL, OR WILDCAT

Blanco
Mesaverde

11 SEC. T. R. M. OR BLK
AND SURVEY OR AREA
Sec 6, T25N, R5W

12 COUNTY OR PARISH

Rio Arriba

13 STATE

NM

17 NO. OF ACRES ASSIGNED
TO THIS WELL

S/319.11

28 ROTARY OR CABLE TOOLS

Rotary

22 APPROX DATE WORK WILL START*

6/1/00

PROPOSED CASING AND CEMENTING PROGRAM

SIZE OF HOLE	GRADE, SIZE OF CASING	WEIGHT PER FOOT	SETTING DEPTH	QUANTITY OF CEMENT
12-1/4"	J-55; 9-5/8" or 8-5/8"	36#	320+/-	238 sxs, circ.
8-3/4" or 7-7/8"	J-55; 4-1/2"	10.5#	5347'	1435 sxs, circ.

It is proposed to drill a vertical wellbore to be completed in the Mesaverde Pool. An NOS was filed 11/8/99. The well will be drilled and equipped according to the following additional attachments:

1. Well Location & Acreage Dedication Plat (C-102).
2. Proposed Well Plan Outline.
3. Cementing Plan.
4. Blowout Preventer Hookup.
5. Surface Use Plan.
6. Production Facility Layout.

This application includes ROW for the well pad.

IN ABOVE SPACE DESCRIBE PROPOSED PROGRAM: If proposal is to deepen give data on present productive zone and proposed new productive zone. If proposal is to drill or deepen directionally, give pertinent data on subsurface locations and measured and true vertical depths. Give blowout preventer program, if any.

25.

SIGNED

Jo Ann Johnson

TITLE Sr. Property Analyst

DATE 5/15/00

(This space for Federal or State office Use)

PERMIT NO.

APPROVAL DATE

Application approval does not warrant or certify that the applicant holds legal or equitable title to those rights in the subject lease which would entitle the applicant to conduct operations thereon

CONDITIONS OF APPROVAL, IF ANY:

Attached
/s/ David R. Sitzler

APPROVED BY

TITLE

Acting Asst Field Mgr

DATE

JUL 20 2000

*See Instructions On Reverse Side

Title 18 U.S.C. Section 1001, makes it a crime for any person knowingly and willfully to make to any department or agency of the United States any false, fictitious or fraudulent statements or representations as to any matter within its jurisdiction.

COPY

00 MAY 13 2000
010 ALBUQUERQUE, N.M.

District I
PO Box 1980, Hobbs, NM 88241-1980

District II
PO Drawer DD, Artesia, NM 88211-0719

District III
1000 Rio Brazos Rd., Aztec, NM 87410

District IV
PO Box 2088, Santa Fe, NM 87504-2088

State of New Mexico
Energy, Minerals & Natural Resources Department

OIL CONSERVATION DIVISION
PO Box 2088
Santa Fe, NM 87504-2088

Form C-102
Revised February 21, 1994
Instructions on back
Submit to Appropriate District Office
State Lease - 4 Copies
Fee Lease - 3 Copies

☐ AMENDED REPORT

WELL LOCATION AND ACREAGE DEDICATION PLAT

*API Number 30-039-26498		*Pool Code 72319	*Pool Name BLANCO MESAVERDE
*Property Code 003132	*Property Name AXI APACHE J		*Well Number 228
*GRID No. 005073	*Operator Name CONOCO, INC.		*Elevation 6661'

¹⁰ Surface Location

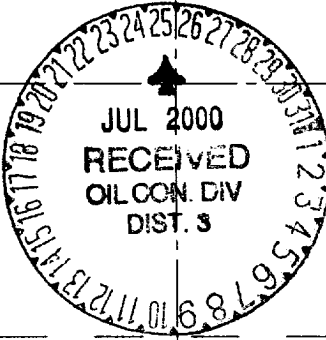
UL or lot no. K	Section 6	Township 25N	Range 5W	Lot Idn	Feet from the 1670	North/South line SOUTH	Feet from the 2410	East/West line WEST	County RIO ARriba
---------------------------	---------------------	------------------------	--------------------	---------	------------------------------	----------------------------------	------------------------------	-------------------------------	-----------------------------

¹¹ Bottom Hole Location If Different From Surface

UL or lot no.	Section	Township	Range	Lot Idn	Feet from the	North/South line	Feet from the	East/West line	County
---------------	---------	----------	-------	---------	---------------	------------------	---------------	----------------	--------

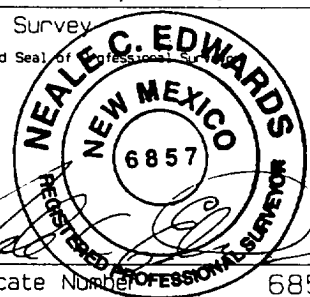
¹² Dedicated Acres 5/319.11	¹³ Joint or Infill	¹⁴ Consolidation Code	¹⁵ Order No.
--------------------------------------------------	-------------------------------	----------------------------------	-------------------------

NO ALLOWABLE WILL BE ASSIGNED TO THIS COMPLETION UNTIL ALL INTERESTS HAVE BEEN CONSOLIDATED OR A NON-STANDARD UNIT HAS BEEN APPROVED BY THE DIVISION

¹⁶ 1300.20' LOT 4	1320.00' LOT 3	2640.00' LOT 2	1313.40' LOT 1
5280.00' LOT 5			1320.00'
2410' LOT 6		2640.00'	
1306.80' LOT 7	1320.00'	2640.00'	2640.00'

6

17 OPERATOR CERTIFICATION
I hereby certify that the information contained herein is true and complete to the best of my knowledge and belief.
Signature: *Mike L. Mankin*
Printed Name: **Mike L. Mankin**
Title: **Right-of-Way Agent**
Date: **12/13/99**

18 SURVEYOR CERTIFICATION
I hereby certify that the well location shown on this plat was plotted from field notes of actual surveys made by me or under my supervision, and that the same is true and correct to the best of my belief.
DECEMBER 3, 1999
Date of Survey
Signature and Seal of Professional Surveyor: 
Certificate Number: **6857**

District I
PO Box 1980, Hobbs, NM 88241-1980

District II
PO Drawer DD, Artesia, NM 88211-0719

District III
1000 Rio Brazos Rd., Aztec, NM 87410

District IV
PO Box 2088, Santa Fe, NM 87504-2088

State of New Mexico
Energy, Minerals & Natural Resources Department

OIL CONSERVATION DIVISION
PO Box 2088
Santa Fe, NM 87504-2088

Form C-102
Revised February 21, 1994
Instructions on back
Submit to Appropriate District Office
State Lease - 4 Copies
Fee Lease - 3 Copies

☐ AMENDED REPORT

WELL LOCATION AND ACREAGE DEDICATION PLAT

*API Number 30039-26498		*Pool Code 72319	*Pool Name BLANCO MESAVERDE
*Property Code 003132	*Property Name AXI APACHE J		*Well Number 228
*GRID No. 005073	*Operator Name CONOCO, INC.		*Elevation 6661'

¹⁰ Surface Location

UL or lot no. K	Section 6	Township 25N	Range 5W	Lot Idn	Feet from the 1670	North/South line SOUTH	Feet from the 2410	East/West line WEST	County RIO ARriba
--------------------	--------------	-----------------	-------------	---------	-----------------------	---------------------------	-----------------------	------------------------	----------------------

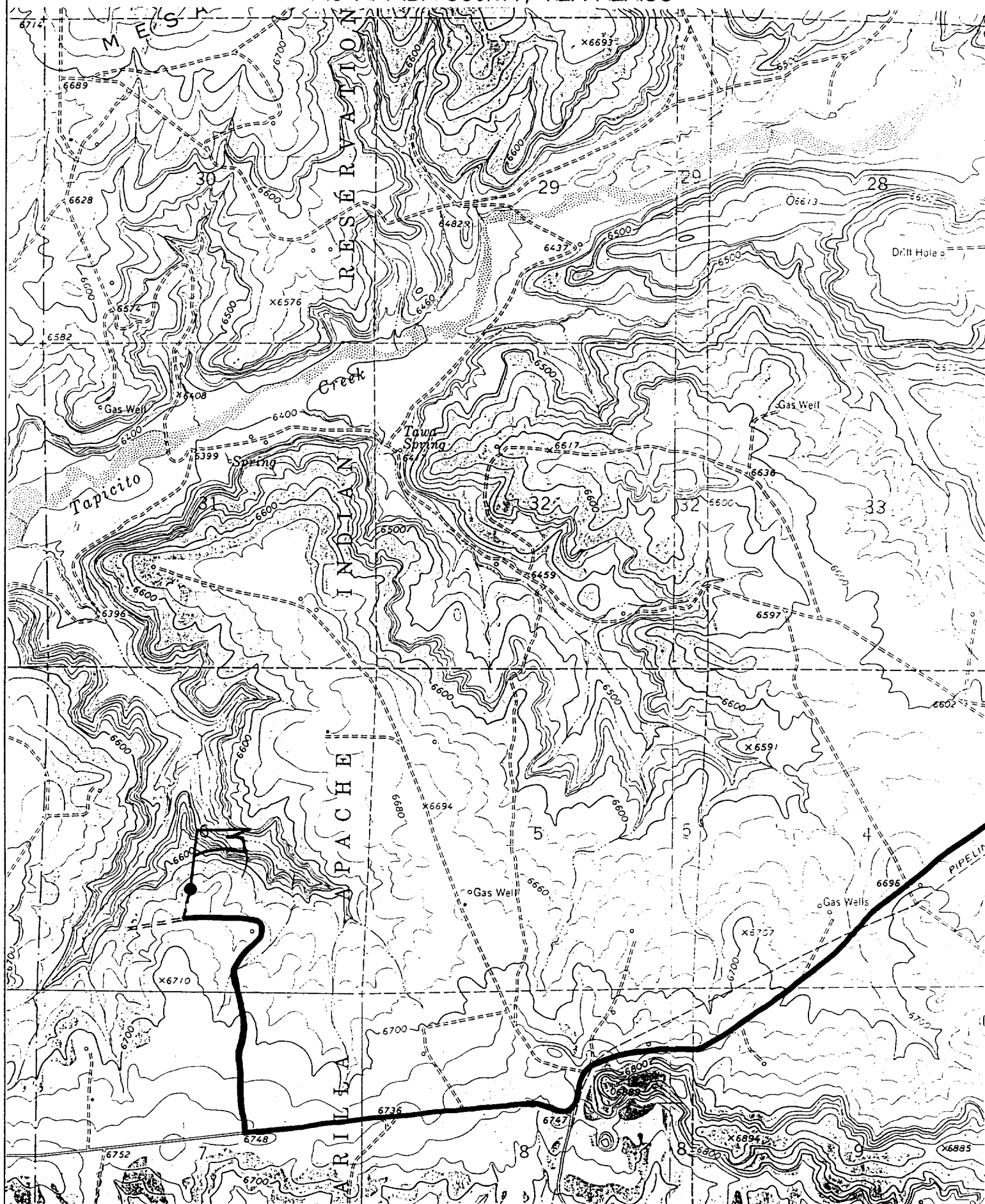
¹¹ Bottom Hole Location If Different From Surface

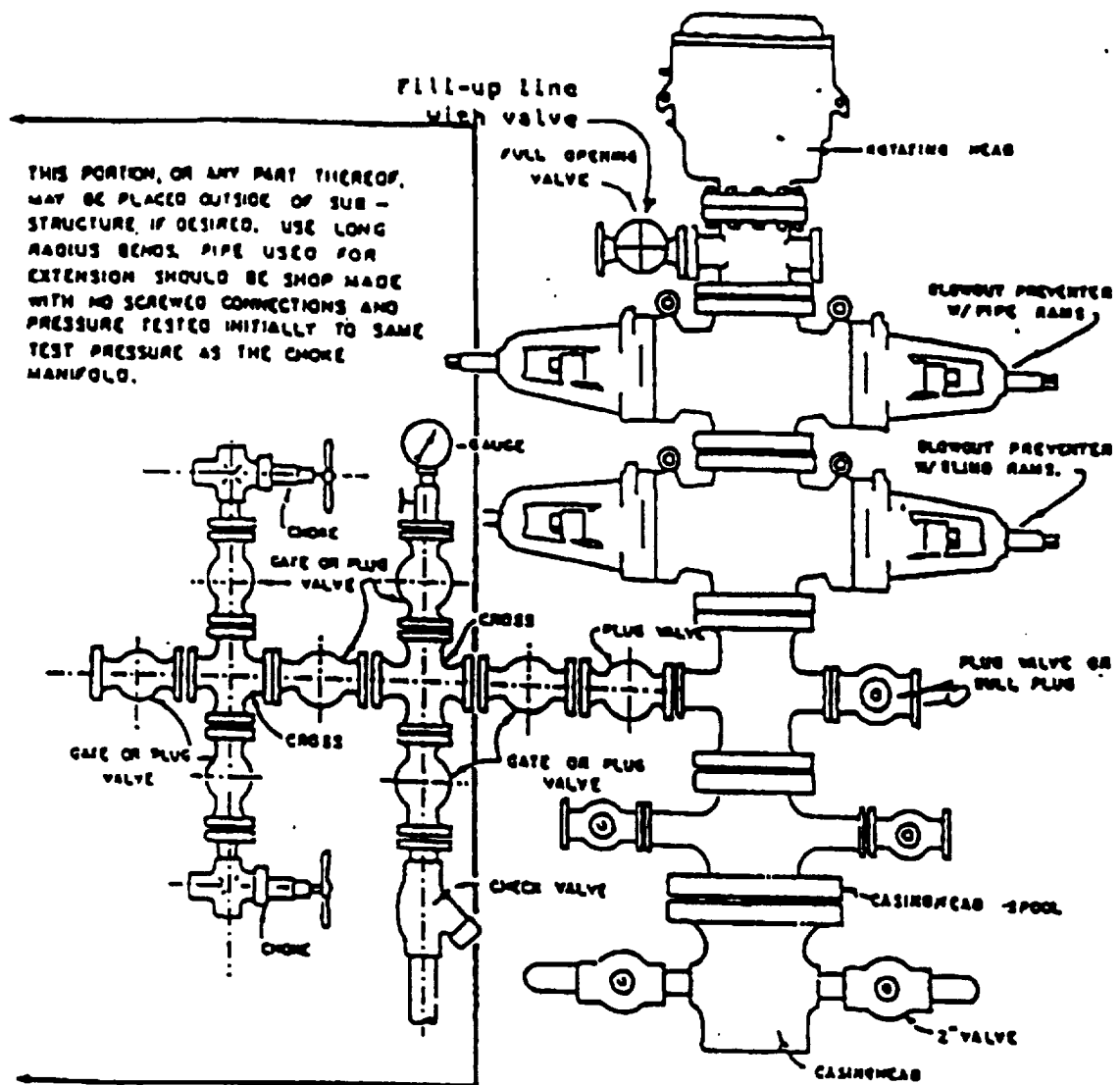
UL or lot no.	Section	Township	Range	Lot Idn	Feet from the	North/South line	Feet from the	East/West line	County
¹² Dedicated Acres 319.11		¹³ Joint or Infill		¹⁴ Consolidation Code		¹⁵ Order No.			

NO ALLOWABLE WILL BE ASSIGNED TO THIS COMPLETION UNTIL ALL INTERESTS HAVE BEEN CONSOLIDATED
OR A NON-STANDARD UNIT HAS BEEN APPROVED BY THE DIVISION

¹⁶ 1300.20' 1320.00' 2640.00'				¹⁷ OPERATOR CERTIFICATION I hereby certify that the information contained herein is true and complete to the best of my knowledge and belief
LOT 4 LOT 3 LOT 2 LOT 1				
1313.40'				
LOT 5				Signature Mike L. Mankin
				Printed Name Right-of-Way Agent
				Title
				Date
¹⁸ SURVEYOR CERTIFICATION I hereby certify that the well location shown on this plat was plotted from field notes of actual surveys made by me or under my supervision, and that the same is true and correct to the best of my belief.				DECEMBER 3, 1999 Date of Survey Signature and Seal of Professional Surveyor
LOT 6				PRELIMINARY
LOT 7				
LOT 8				
LOT 9				
1306.80' 1320.00' 2640.00'				Certificate Number 6857

1670' FSL & 2410' FWL, SECTION 6, T25N, R5W, N.M.P.M.
RIO ARRIBA COUNTY, NEW MEXICO





BLOWOUT PREVENTER HOOKUP

Drilling contractors used in the San Juan Basing supply 3000 psi equipment, but cannot provide annular preventors because of sub-structure limitations. Maximum anticipated surface pressures for this well will not exceed the working pressure of the proposed BOP system. Please see the attached BOP diagram details 2000 psi equipment according to Onshore Order No. 2 even though the equipment will test to 3000 psi. The 2000 psi system allows the deletion of the annular preventor and fulfills your requirements (note diagram No. 1). In addition, the following equipment will comprise the 2000 psi system:

1. Two rams with one blind and one pipe ram.
2. Kill line (2 inch maximum).
3. One kill line valve.
4. One choke line valve.
5. Two chokes (reference diagram No. 1).
6. Upper kelly cock valve with handle.
7. Safety valve and subs to fit all drill strings in use.
8. Two-inch minimum choke line.
9. Pressure gauge on choke manifold.
10. Fill-up line above the upper most preventor.
11. Rotating head.

Cathodic Protection System Description

Anode Bed Type	Deep Well	
Hole Size	8"	
Hole Depth	200' - 500'	As required to place anodes below moisture and in low resistance strata.
Surface Casing	8" Diam., \geq 20' Length, Cemented In Annular Space	When needed, casing will be installed at an adequate depth to control ground water flow. Casing will extend a minimum of 2' above grade, be surrounded by a concrete pad, and sealed with a PVC cap. Steel casing will be substituted when boulders are encountered.
Vent Pipe	1" Diam. PVC	Vent pipe will extend from bottom of hole, through top of casing cap, and sealed with a 1" perforated PVC cap.
Type Of Anodes	Cast Iron Or Graphite	
Number Of Anodes	8 - 20	Sufficient quantity to achieve a total anode bed resistance of <1 ohm and a design life \geq 20 years.
Anode Bed Backfill	Loresco SW Calcined Petroleum Coke Breeze	Installed from bottom of hole to 10' above top anode.
Anode Junction Box	8 - 20 Circuit Fiberglass Or Metal	Sealed to prevent insect & rodent intrusion.
Current Splitter Box	2 - 5 Circuit Metal	Sealed to prevent insect & rodent intrusion.
DC / AC Cable	DC: #2, #4, #6, #8 Stranded Copper (One Size Or Any Combination Of) With High Molecular Weight Polyethylene (HMWPE) Insulation. AC: #8 Stranded Copper HMWPE	18" depth in typical situation, 24" depth in roadway, & 36" depth in arroyo's and streams. EXCEPTION: If trenching is in extremely hard substratum, depth will be 6 - 12" with cable installed in conduit. Installed above foreign pipelines if 1' clearance is available, if not, installed under foreign pipeline with 1' clearance (AC cable <i>always</i> installed under foreign pipeline in conduit).
Power Source	1) Rectifier 2) Solar Power Unit 3) Thermoelectric Generator	Choice of power source depending on availability of AC & other economic factors.
External Painting	Color to be selected according to BLM specifications.	Paint applied to any surface equipment associated with the CP system which can reasonably be painted.