

UNITED STATES  
DEPARTMENT OF THE INTERIOR

## GEOLOGICAL SURVEY

30-045-21872

## APPLICATION FOR PERMIT TO DRILL, DEEPEN, OR PLUG BACK

## 1a. TYPE OF WORK

DRILL ☒DEEPEN ☐PLUG BACK ☐

## b. TYPE OF WELL

OIL  
WELL ☒GAS  
WELL ☐OTHER ☐MULTIPLE  
ZONE ☐

## 2. NAME OF OPERATOR

Acobe Oil Company

## 3. ADDRESS OF OPERATOR

M.B. Jones, 1223 Bank of N.M. Bldg., Albuquerque, NM 87102

## 4. LOCATION OF WELL (Report location clearly and in accordance with any State requirements.)

At surface

1980 fnl and 1980 fwl

At proposed prod. zone

SAME

## 14. DISTANCE IN MILES AND DIRECTION FROM NEAREST TOWN OR POST OFFICE\*

 $2\frac{1}{2}$  miles northeast of Nageezi, New Mexico

## 15. DISTANCE FROM PROPOSED\*

LOCATION TO NEAREST  
PROPERTY OR LEASE LINE, FT.  
(Also to nearest drlg. unit line, if any)

1980

## 16. NO. OF ACRES IN LEASE

1600

17. NO. OF ACRES ASSIGNED  
TO THIS WELL

40.00

18. DISTANCE FROM PROPOSED LOCATION\*  
TO NEAREST WELL, DRILLING, COMPLETED,  
OR APPLIED FOR, ON THIS LEASE, FT. $3\frac{1}{4}$  mile

## 19. PROPOSED DEPTH

5450

## 20. ROTARY OR CABLE TOOLS

Rotary

## 21. ELEVATIONS (Show whether DF, RT, GR, etc.)

6726 Gr

## 22. APPROX. DATE WORK WILL START\*

Sept 10, 1975

## 23.

## PROPOSED CASING AND CEMENTING PROGRAM

SIZE OF HOLE	SIZE OF CASING	WEIGHT PER FOOT	SETTING DEPTH	QUANTITY OF CEMENT
10 3/4	8 5/8	24	200	100 sxs-circulate
7 7/8	5 1/2	14 & 15.5	5450	350 sxs - two stage

Plan to drill 10 3/4" hole to 200' and set surface casing and circulate cement to surface. Will drill 7 7/8" hole to a total depth of approximately 5450' to test the Gallup.

If production is encountered, plan to run 5 1/2" casing to total depth and complete by selective perforation. 10" Schaffer Double Gate Hydraulic BOP tested to 3000 psi will be on well during all drilling operations.

RECEIVED

AUG 28 1975

U. S. GEOLOGICAL SURVEY  
FARMINGTON, N. M.

IN ABOVE SPACE DESCRIBE PROPOSED PROGRAM: If proposal is to deepen or plug back, give data on present productive zone and proposed new productive zone. If proposal is to drill or deepen directly, give pertinent data on subsurface locations and measured and true vertical depths. Give blowout preventer program, if any.

24.

SIGNED

TITLE Morris B. Jones, Engineer

DATE Aug. 26, 1975

(This space for Federal or State office use)

PERMIT NO.

APPROVAL DATE

APPROVED BY

TITLE

DATE

CONDITIONS OF APPROVAL, IF ANY:

Ok

\*See Instructions On Reverse Side

NEW MEXICO OIL CONSERVATION COMMISSION  
WELL LOCATION AND ACREAGE DEDICATION PLAT

Form C-102  
Supersedes C-128  
Effective 1-1-65

All distances must be from the outer boundaries of the Section

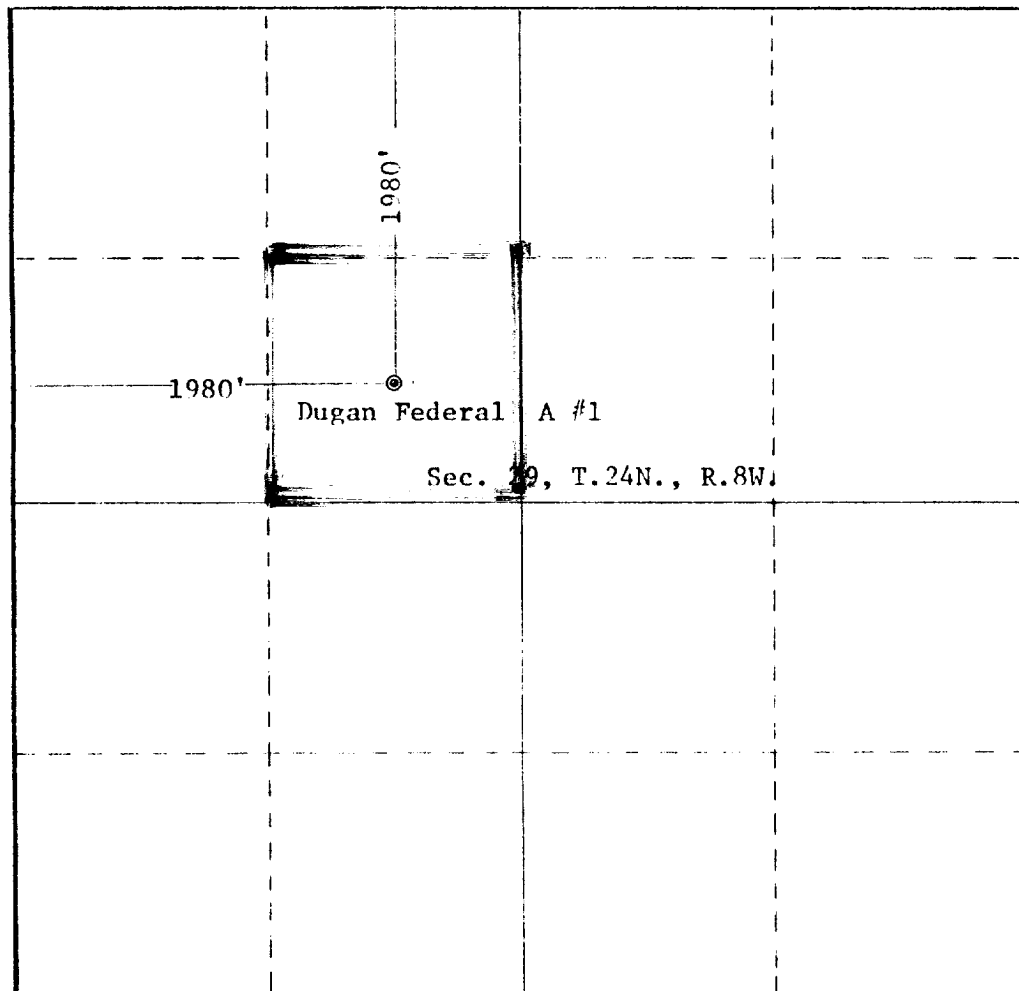
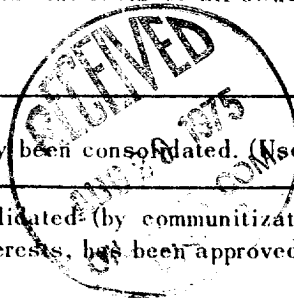
LEASEE <b>ALOBL OIL COMPANY</b>			LEASE <b>Dugan Federal A</b>		WELL NO. <b>DUGANX FANXXXA #1</b>
Section <b>F</b>	Section <b>29</b>	Township <b>24 North</b>	Range <b>8 West</b>	County <b>San Juan</b>	
Actual Plotting Location of Well:					
<b>1980</b>	feet from the	<b>North</b>	line and	<b>1980</b>	feet from the
					<b>West</b>
Ground Level Elev. <b>6726</b>	Producing Formation <b>Co. Top</b>		Pool <b>Artificial</b>	Dedicated Acreage: <b>40.0</b> Acres	

1. Outline the acreage dedicated to the subject well by colored pencil or hatchure marks on the plat below.
2. If more than one lease is dedicated to the well, outline each and identify the ownership thereof (both as to working interest and royalty).
3. If more than one lease of different ownership is dedicated to the well, have the interests of all owners been consolidated by communitization, unitization, force-pooling, etc?

☐ Yes ☐ No If answer is "yes," type of consolidation \_\_\_\_\_

If answer is "no," list the owners and tract descriptions which have actually been consolidated. (Use reverse side of this form if necessary.) \_\_\_\_\_

No allowable will be assigned to the well until all interests have been consolidated (by communitization, unitization, forced-pooling, or otherwise) or until a non-standard unit, eliminating such interests, has been approved by the Commission.



CERTIFICATION

I hereby certify that the information contained herein is true and complete to the best of my knowledge and belief.

*Morris B. Jones*  
Name

**Morris B. Jones**

Position

**Engineer**

Company

**ALOBL Oil Company**

Date

**August 26, 1975**

I hereby certify that the well location shown on this plat was plotted from field notes of actual surveys made by me or under my supervision, and that the same is true and correct to the best of my knowledge and belief.

Date Surveyed

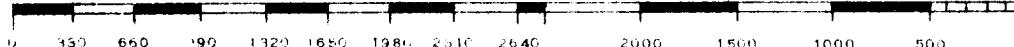
**August 23, 1975**

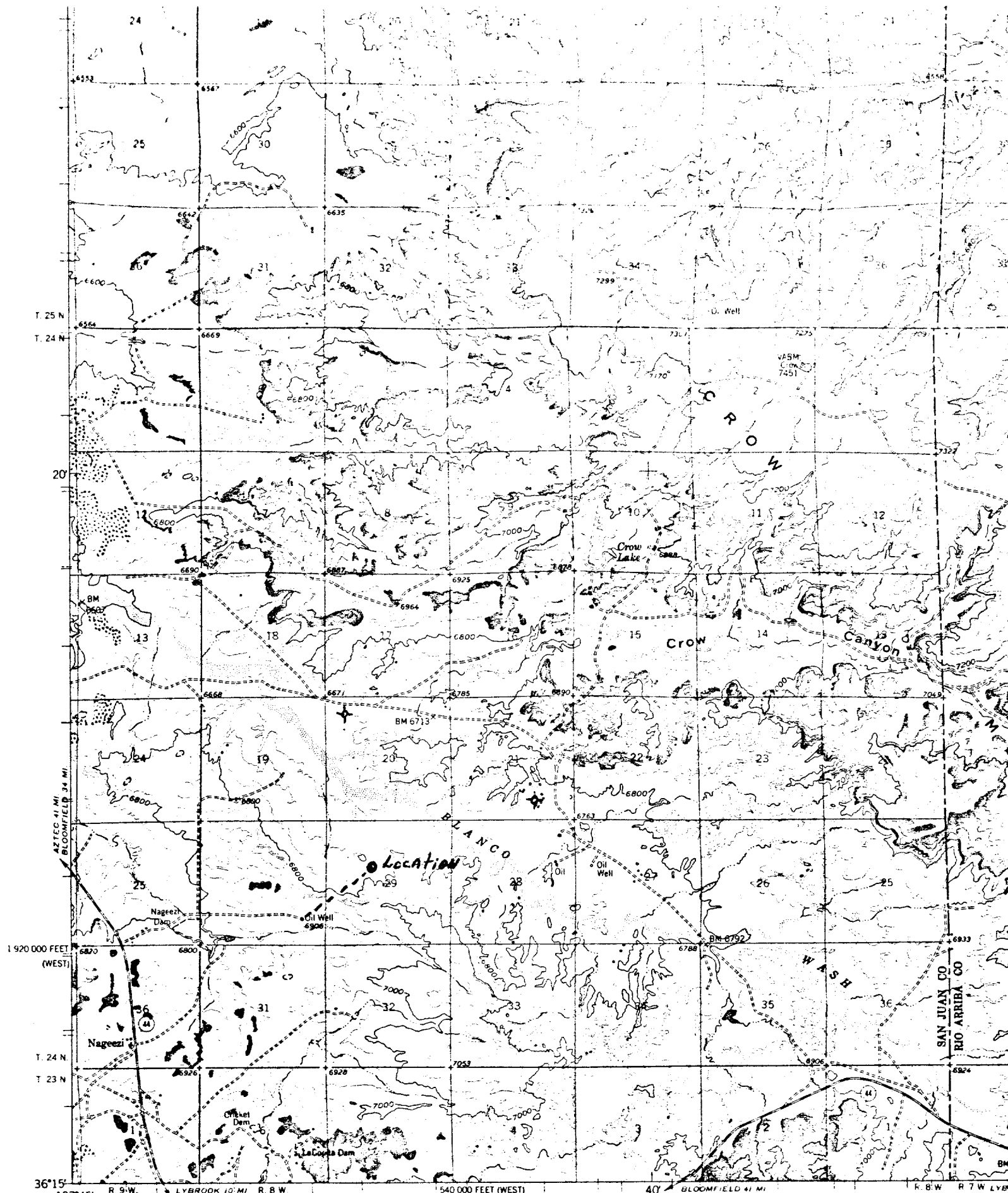
Registered Professional Engineer and/or Land Surveyor

*W. D. McMahon*

Certificate No.

**2031**



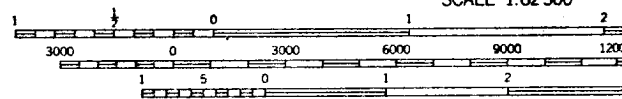


Mapped, edited, and published by the Geological Survey

Control by USGS and USC&GS

Topography by photogrammetric methods from aerial photographs taken 1955. Field checked 1959

Polyconic projection. 1927 North American datum  
10,000 foot grid based on New Mexico coordinate system,  
west and central zones



SCALE 1:62500  
CONTOUR INTERVAL 40 FEET  
DATUM IS MEAN SEA LEVEL