

UNITED STATES
DEPARTMENT OF THE INTERIOR
GEOLOGICAL SURVEY

APPLICATION FOR PERMIT TO DRILL, DEEPEN, OR PLUG BACK

1a. TYPE OF WORK

DRILL ☒DEEPEN ☐PLUG BACK ☐

b. TYPE OF WELL

OIL
WELL ☒GAS
WELL ☐OTHER ☐SINGLE
ZONE ☒MULTIPLE
ZONE ☐

2. NAME OF OPERATOR

Tesoro Petroleum Corporation

3. ADDRESS OF OPERATOR

404 Fedelity Plaza, Oklahoma City, Oklahoma 73102

4. LOCATION OF WELL (Report location clearly and in accordance with any State requirements.)*

At surface

865' FNL, 900' FWL

At proposed prod. zone

14. DISTANCE IN MILES AND DIRECTION FROM NEAREST TOWN OR POST OFFICE*

Same

6 miles east of Bisti Trading Post

15. DISTANCE FROM PROPOSED*

LOCATION TO NEAREST
PROPERTY OR LEASE LINE, FT.
(Also to nearest drlg. unit line, if any)

865'

16. NO. OF ACRES IN LEASE

2549.76

18. DISTANCE FROM PROPOSED LOCATION*

TO NEAREST WELL, DRILLING, COMPLETED,
OR APPLIED FOR, ON THIS LEASE, FT.

NA

19. PROPOSED DEPTH

5100'

17. NO. OF ACRES ASSIGNED
TO THIS WELL

40 39.96

20. ROTARY OR CABLE TOOLS

Rotary

21. ELEVATIONS (Show whether DF, RT, GR, etc.)

6027 GR

22. APPROX. DATE WORK WILL START*

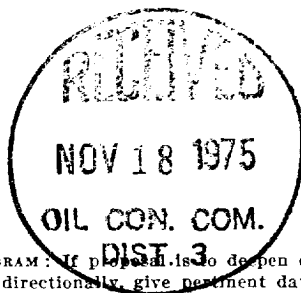
11-20-75

23.

PROPOSED CASING AND CEMENTING PROGRAM

| SIZE OF HOLE | SIZE OF CASING | WEIGHT PER FOOT | SETTING DEPTH | QUANTITY OF CEMENT |
|--------------|----------------|-----------------|---------------|-------------------------------|
| 12 1/4" | 8 5/8" | 24.0# | 300' | 200 Sacks, circulated/surface |
| 7 7/8" | 4 1/2" | 10.5# | TD | 400 Sacks |

It is intended to drill this well to a depth sufficient to penetrate the Dakota Formation using rotary tools and a fresh water gel-chemical mud as a circulating media. Electric logs will be run to TD and, if a completion is attempted, casing will be run to total depth and cemented with 200 sacks. Productive formations will be perforated and sand water fractured if necessary.



RECEIVED

NOV 17 1975

GEOLOGICAL SURVEY

IN ABOVE SPACE DESCRIBE PROPOSED PROGRAM: If proposal is to deepen or plug back, give data on present productive zone and proposed new productive zone. If proposal is to drill or deepen directionally, give pertinent data on subsurface locations and measured and true vertical depths. Give blowout preventer program, if any.

24.

SIGNED

DAVE M. HIGGINS, JR.

TITLE Petroleum Geologist

DATE 11-14-75

(This space for Federal or State office use)

PERMIT NO.

APPROVAL DATE

APPROVED BY

TITLE

DATE

CONDITIONS OF APPROVAL, IF ANY:

*See Instructions On Reverse Side

**NEW MEXICO OIL CONSERVATION COMMISSION
WELL LOCATION AND ACREAGE DEDICATION PLAT**

Form O-11
Supersedes O-128
Effective 1-1-55

All distances must be from the outer boundaries of the Section

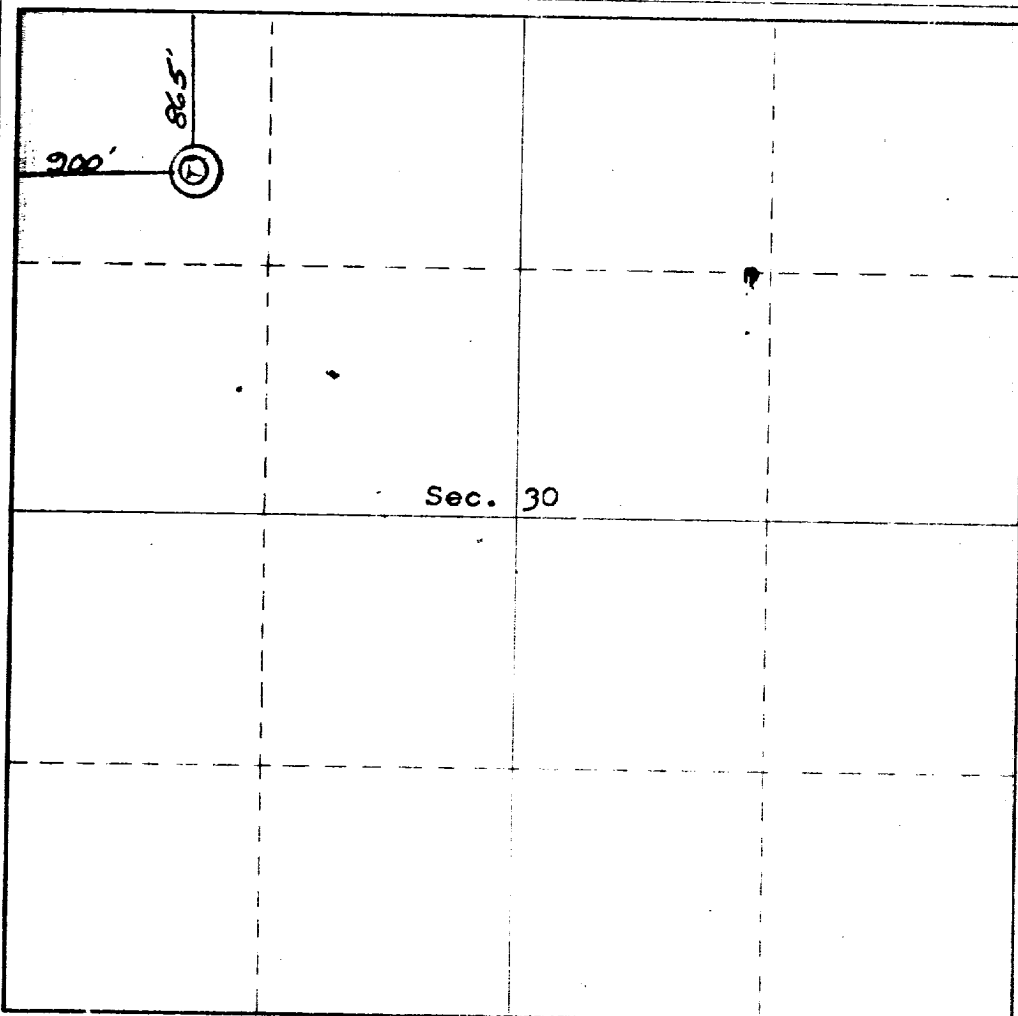
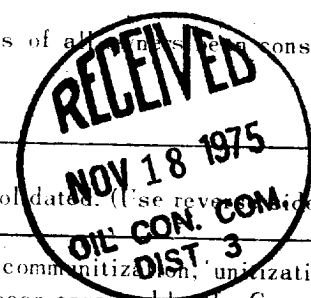
| | | | | | | | | |
|--|--------------------------------------|-----------------------------|-------------------------------|---------------------------|--|-------------------------------------|--|--|
| Operator TESORO PETROLEUM CORPORATION | | | Lease NARIZ FEDERAL | | | Well No. 1 | | |
| Unit Letter D | Section 30 | Township 24 NORTH | Range 12 WEST | County SAN JUAN | | | | |
| Actual Footage Location of Well: 865 feet from the NORTH line and 900 feet from the WEST line | | | | | | | | |
| Ground Level Elev. 6027.0 | Producing Formation DAKOTA | | Well Name WILDCAT | | | Location of Well 40 39.96 | | |

1. Outline the acreage dedicated to the subject well by colored pencil or hatchure marks on the plat below.
2. If more than one lease is dedicated to the well, outline each and identify the ownership thereof (both as to working interest and royalty).
3. If more than one lease of different ownership is dedicated to the well, have the interests of all leases been consolidated by communitization, unitization, force-pooling, etc?

☐ Yes ☐ No If answer is "yes," type of consolidation _____

If answer is "no," list the owners and tract descriptions which have actually been consolidated. (Use reverse side of this form if necessary.) _____

No allowable will be assigned to the well until all interests have been consolidated (by communitization, unitization, forced-pooling, or otherwise) or until a non-standard unit, eliminating such interests, has been approved by the Commission.



CERTIFICATION

I hereby certify that the information contained herein is true and complete to the best of my knowledge and belief.

ORIGINAL SIGNED BY
DAVE M. THOMAS, JR.

Dave M. Thomas, Jr.

Petroleum-Geologist

Tesoro Petroleum Corp.

11-14-75

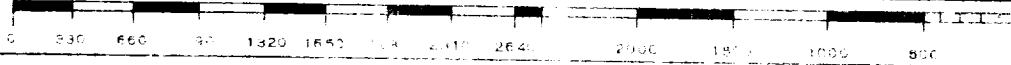
I hereby certify that the location shown on this plat was plotted from field notes of actual surveys made by me or under my supervision and that same is true and correct to the best of my knowledge and belief.

JAMES P. LEESE

27 September, 1975

JAMES P. LEESE

1463



VICINITY MAP

