

UNITED STATES
DEPARTMENT OF THE INTERIOR
GEOLOGICAL SURVEY

API 30-045-22002
5. LEASE DESIGNATION AND SERIAL NO.

APPLICATION FOR PERMIT TO DRILL, DEEPEN, OR PLUG BACK

1a. TYPE OF WORK

DRILL ☒

DEEPEN ☐

PLUG BACK ☐

b. TYPE OF WELL

OIL WELL ☐

GAS WELL ☒

OTHER

SINGLE ZONE ☐

MULTIPLE ZONE ☒

2. NAME OF OPERATOR

Dugan Production Corp.

3. ADDRESS OF OPERATOR

Box 234, Farmington, NM 87401

4. LOCATION OF WELL (Report location clearly and in accordance with any State requirements.)*
At surface

1650' FSL - 1190' FWL

At proposed prod. zone

14. DISTANCE IN MILES AND DIRECTION FROM NEAREST TOWN OR POST OFFICE*

2-1/2 miles southwest Blanco Trading Post

15. DISTANCE FROM PROPOSED*

LOCATION TO NEAREST PROPERTY OR LEASE LINE, FT.
(Also to nearest drlg. unit line, if any) 1190'

16. NO. OF ACRES IN LEASE

480.96

17. NO. OF ACRES ASSIGNED TO THIS WELL

-160 - 160

18. DISTANCE FROM PROPOSED LOCATION* TO NEAREST WELL, DRILLING, COMPLETED, OR APPLIED FOR, ON THIS LEASE, FT.

1500' approx

19. PROPOSED DEPTH

2600'

20. ROTARY OR CABLE TOOLS

Rotary

21. ELEVATIONS (Show whether DF, RT, GR, etc.)

6874' GR

22. APPROX. DATE WORK WILL START*

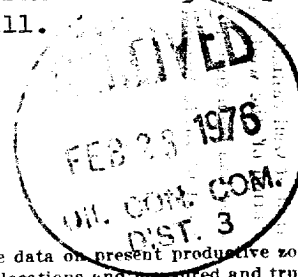
2-29-76

23. PROPOSED CASING AND CEMENTING PROGRAM

SIZE OF HOLE	SIZE OF CASING	WEIGHT PER FOOT	SETTING DEPTH	QUANTITY OF CEMENT
7-7/8"	7"	20#	60'	30 sx
5"	2-7/8"	6.4#	2600'	200 cu ft

Plan to drill well using mud as circulating medium to test Pictured Cliffs and Chacra formations. If productive, we plan to set 2-7/8" tubing for casing, selectively perforate, frac, clean out after frac, run 1-1/4" tubing, and complete well.

We plan to use blowout preventer furnished by Wilson Drilling Company while drilling and WKM master valve while completing well.



IN ABOVE SPACE DESCRIBE PROPOSED PROGRAM: If proposal is to deepen or plug back, give data on present productive zone and proposed new productive zone. If proposal is to drill or deepen directionally, give pertinent data on subsurface locations and measured and true vertical depths. Give blowout preventer program, if any.

24.

SIGNED

Thomas A. Dugan

TITLE

Engineer

DATE 2-17-76

(This space for Federal or State office use)

PERMIT NO.

APPROVAL DATE

APPROVED BY

TITLE

DATE

CONDITIONS OF APPROVAL, IF ANY:

Clear

*See Instructions On Reverse Side

NEW MEXICO OIL CONSERVATION COMMISSION
WELL LOCATION AND ACREAGE DEDICATION PLAT

Form C-102
Supersedes C-128
Effective 1-1-65

All distances must be from the outer boundaries of the Section.

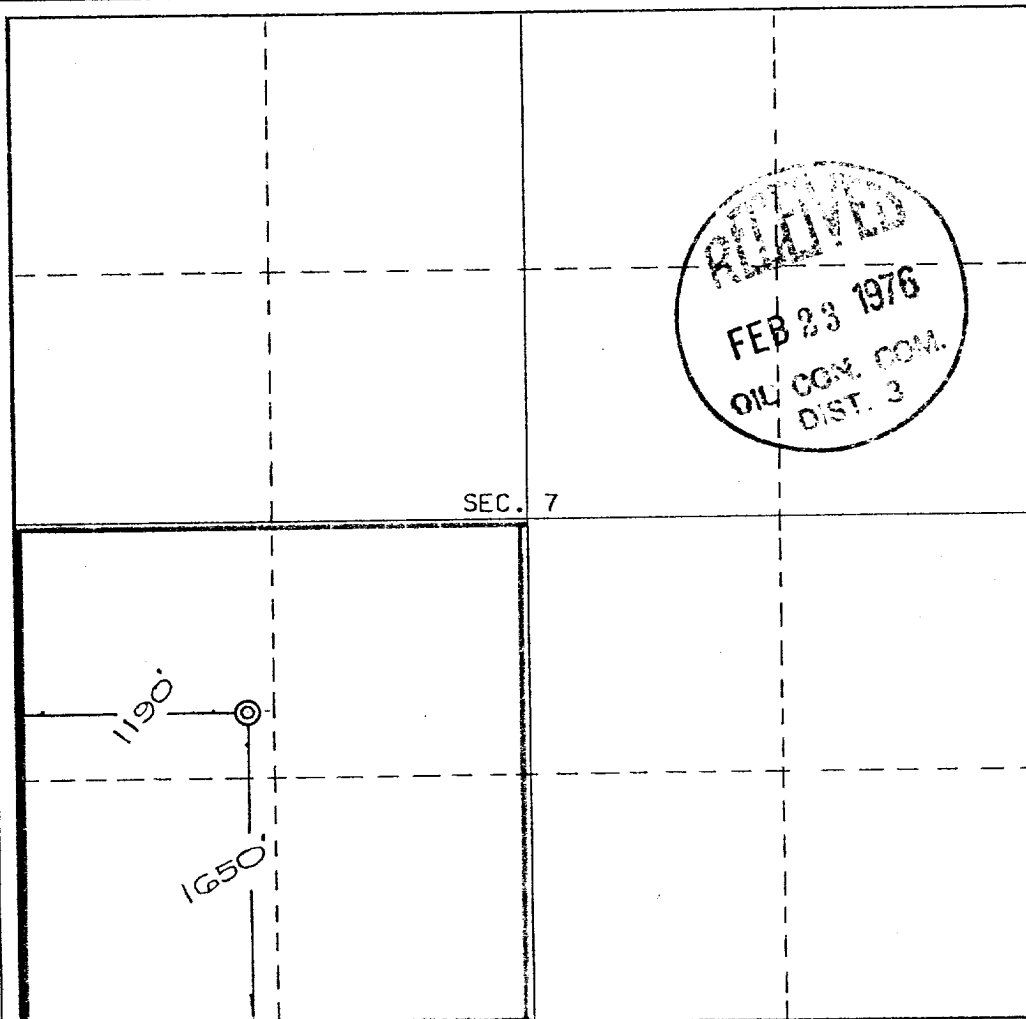
Operator Dugan Production Corporation			Lease Sixteen G's		Well No. 2
Unit Letter L	Section 7	Township 24 North	Range 9 West	County San Juan	
Actual Footage Location of Well: 1650 feet from the South line and 1190 feet from the West line					
Ground Level Elev. 6874	Producing Formation Pictured Cliffs-Chacra	Pool Wildcat		Dedicated Acreage: 160 - 160 Acres	

1. Outline the acreage dedicated to the subject well by colored pencil or hachure marks on the plat below.
2. If more than one lease is dedicated to the well, outline each and identify the ownership thereof (both as to working interest and royalty).
3. If more than one lease of different ownership is dedicated to the well, have the interests of all owners been consolidated by communitization, unitization, force-pooling, etc?

☐ Yes ☐ No If answer is "yes," type of consolidation _____

If answer is "no," list the owners and tract descriptions which have actually been consolidated. (Use reverse side of this form if necessary.) _____

No allowable will be assigned to the well until all interests have been consolidated (by communitization, unitization, forced-pooling, or otherwise) or until a non-standard unit, eliminating such interests, has been approved by the Commission.



CERTIFICATION

I hereby certify that the information contained herein is true and complete to the best of my knowledge and belief.

Thomas A. Dugan

Name
Thomas A. Dugan

Position
Engineer

Company
Dugan Production Corp.

Date
2-17-76

STATE OF NEW MEXICO
I hereby certify that the well location shown on this plat was plotted from field notes of actual surveys made by me or under my supervision, and that the same is true and correct to the best of my knowledge and belief.
NO. 3502
REGISTERED LAND SURVEYOR

Date Surveyed
January 21, 1976

Registered Professional Engineer and/or Land Surveyor

E.V. Echoshawk

Certificate No. **3602**
E.V. Echoshawk LS

