

UNITED STATES
DEPARTMENT OF THE INTERIOR
GEOLOGICAL SURVEY

APPLICATION FOR PERMIT TO DRILL, DEEPEN, OR PLUG BACK

1a. TYPE OF WORK
DRILL ☒ DEEPEN ☐ PLUG BACK ☐

b. TYPE OF WELL
OIL WELL ☐ GAS WELL ☒ OTHER ☐ SINGLE ZONE ☐ MULTIPLE ZONE ☐

2. NAME OF OPERATOR
APACHE CORPORATION

3. ADDRESS OF OPERATOR
2016 Lincoln Center Building, Denver, Colorado 80203

4. LOCATION OF WELL (Report location clearly and in accordance with any State requirements.*)
At surface
1850' FNL & 1650' FWL
At proposed prod. zone
Same

14. DISTANCE IN MILES AND DIRECTION FROM NEAREST TOWN OR POST OFFICE*
38 miles SE Bloomfield, New Mexico

15. DISTANCE FROM PROPOSED*
LOCATION TO NEAREST
PROPERTY OR LEASE LINE, FT.
(Also to nearest drlg. unit line, if any)
1650'

16. NO. OF ACRES IN LEASE
160

17. NO. OF ACRES ASSIGNED
TO THIS WELL
320

18. DISTANCE FROM PROPOSED LOCATION*
TO NEAREST WELL, DRILLING, COMPLETED,
OR APPLIED FOR, ON THIS LEASE, FT.
None

19. PROPOSED DEPTH
7000'

20. ROTARY OR CABLE TOOLS
Rotary

21. ELEVATIONS (Show whether DF, RT, GR, etc.)
7132 G.R.

22. APPROX. DATE WORK WILL START*
November 15, 1976

5. LEASE DESIGNATION AND SERIAL NO.
30-045-22224
NM-23060

6. IF INDIAN, ALLOTTEE OR TRIBE NAME

7. UNIT AGREEMENT NAME

8. FARM OR LEASE NAME
APACHE CORP FEDERAL C

9. WELL NO.
#1

10. FIELD AND POOL, OR WILDCAT
Basin - Dakota

11. SEC., T., R., M., OR BLK.
AND SURVEY OR AREA
Sec. 11-24N-8W

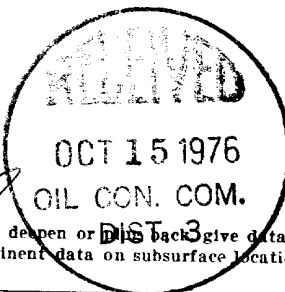
12. COUNTY OR PARISH
San Juan

13. STATE
New Mexico

PROPOSED CASING AND CEMENTING PROGRAM

SIZE OF HOLE	SIZE OF CASING	WEIGHT PER FOOT	SETTING DEPTH	QUANTITY OF CEMENT
13-3/8	9-5/8"	32.30#	300'	250 sx
8-3/4	7"	23#	7000'	Cover all pay zones

1. Drill 13-3/8" hole to 300' and cement 9-5/8" casing to surface.
2. Drill 8-3/4" hole to approximately 7000' using mud of good quality from 1800' to T.D.
3. All oil and gas shows will be evaluated by DST's and/or electric logs.
4. New casing will be cemented to protect all possible producing horizons.
5. Should the well be non-productive, plugging operations will be performed according to federal regulations.



RECEIVED

OCT 13 1976

GEOLOGICAL SURVEY

Gas not deficient

IN ABOVE SPACE DESCRIBE PROPOSED PROGRAM: If proposal is to deepen or plug back give data on present productive zone and proposed new productive zone. If proposal is to drill or deepen directionally, give pertinent data on subsurface locations and measured and true vertical depths. Give blowout preventer program, if any.

24. SIGNED Allen Thomas TITLE Agent for Apache Corporation DATE _____
(This space for Federal or State office use)

PERMIT NO. _____ APPROVAL DATE _____

APPROVED BY _____ TITLE _____ DATE _____
CONDITIONS OF APPROVAL, IF ANY:

*See Instructions On Reverse Side

**NEW MEXICO OIL CONSERVATION COMMISSION
WELL LOCATION AND ACERAGE DEDICATION PLAT**

All distances must be from the outer boundaries of the Section

Operator APACHE CORPORATION				Lease APACHE CORP FEDERAL C APACHE FEDERAL		Well No. 1 -
Unit Letter F	Section 11	Township 24 NORTH	Range 8 WEST	County SAN JUAN		
Actual Footage Location of Well: 1850 feet from the NORTH line and 1650 feet from the WEST line						
Ground Level Elev. 7132	Producing Formation DAKOTA		Pool Basin - Dakota	Dedicated Acreage: 320 Acres		

1. Outline the acreage dedicated to the subject well by colored pencil or hachure marks on the plat below.
2. If more than one lease is dedicated to the well, outline each and identify the ownership thereof (both as to working interest and royalty),
3. If more than one lease of different ownership is dedicated to the well, have the interests of all owners been consolidated by communitization, unitization, force-pooling, etc?
☐ Yes ☐ No If answer is "yes," type of consolidation _____

If answer is "no," list the owners and tract descriptions which have actually consolidated. (Use reverse side of this form if necessary.) _____

No allowable will be assigned to the well until all interests have been consolidated (by communitization, unitization, forced-pooling, or otherwise) or until a non standard unit, eliminating such interests, has been approved by the Commission.

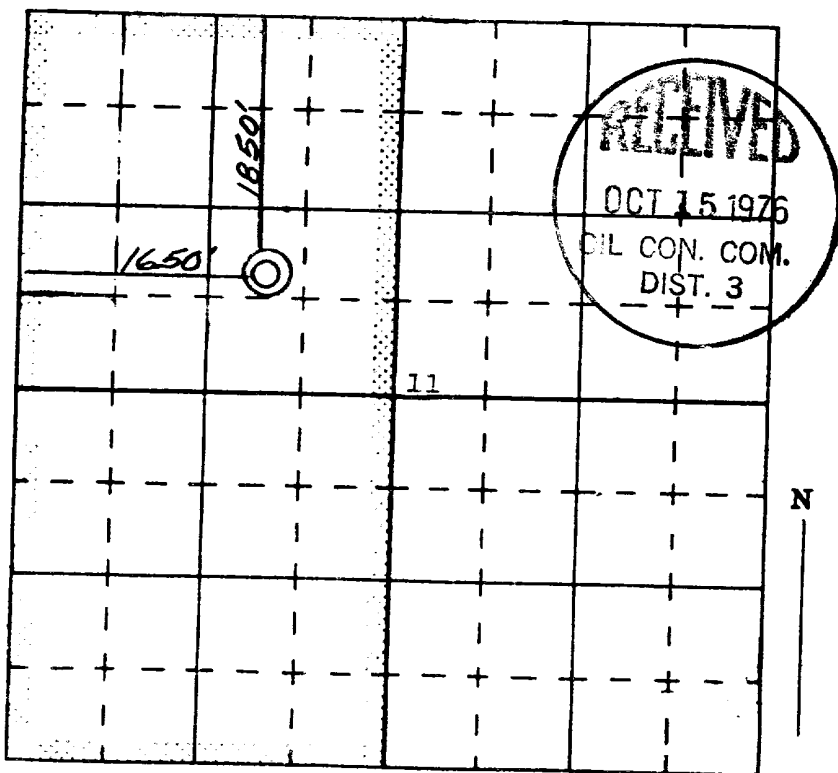
CERTIFICATION

I hereby certify that the information contained herein is true and complete to the best of my knowledge and belief.

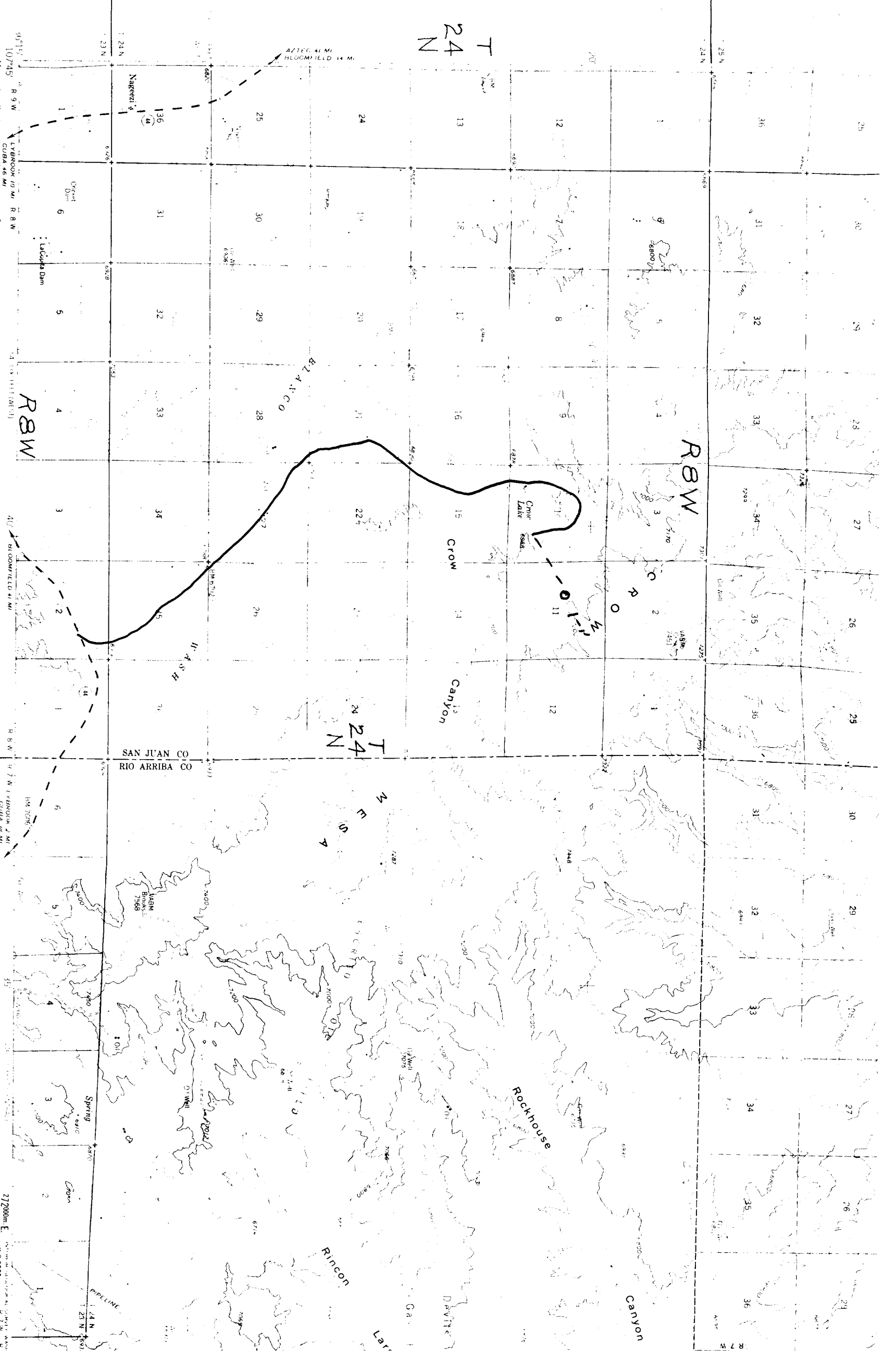
Allen H. Thomas
Name
Agent
Position
Apache Corp
Company
10-13-76
Date

I hereby certify that the well location shown on this plat was plotted from field notes of actual surveys made by me or under my supervision, and that the same is true and correct to the best of my knowledge and belief.

1 October 1976
Date Surveyed
James P. Leese
Registered Professional Engineer
and/or Land Surveyor James P. Leese



1463
Certificate No.



Topography by photogrammetric methods from aerial photography taken 1945. Field checked 1959.

Polyscope projection. 1927 North American datum.

10,000 foot grid bases on New Mexico section the system and not central zone.

1950 mean Universal Transverse Mercator grid ticks, zone 13 shown in blue.

Dashed lines show approximate locations.

Cartoon land lines omitted because of insufficient data.

Control by USGS and USCGS.

Maped, edited, and published by the Geological Survey.

Scale 1:62,500.

FOR SALE BY U.S. GEOLOGICAL SURVEY, DENVER 25, COLORADO OR WASHINGTON 25, D.C.

A FOLDER DESCRIBING TOPOGRAPHIC MAPS AND SYMBOLS IS AVAILABLE ON REQUEST.

ROAD CLASSIFICATION

Medium duty

Unimproved dirt

Scale Bar

27,200m E.

23 N

24 N

25 N

26 N

27 N

28 N

29 N

30 N

31 N

32 N

33 N

34 N

35 N

36 N

37 N

38 N

39 N

40 N

41 N

42 N

43 N

44 N

45 N

46 N

47 N

48 N

49 N

50 N

51 N

52 N

53 N

54 N

55 N

56 N

57 N

58 N

59 N

60 N

61 N

62 N

63 N

64 N

65 N

66 N

67 N

68 N

69 N

70 N

71 N

72 N

73 N

74 N

75 N

76 N

77 N

78 N

79 N

80 N

81 N

82 N

83 N

84 N

85 N

86 N

87 N

88 N

89 N

90 N

91 N

92 N

93 N

94 N

95 N

96 N

97 N

98 N

99 N

100 N

101 N

102 N

103 N

104 N

105 N

106 N

107 N

108 N

109 N

110 N

111 N

112 N

113 N

114 N

115 N

116 N

117 N

118 N

119 N

120 N

121 N

122 N

123 N

124 N

125 N

126 N

127 N

128 N

129 N

130 N

131 N

132 N

133 N

134 N

135 N

136 N

137 N

138 N

139 N

140 N

141 N

142 N

143 N

144 N

145 N

146 N

147 N

148 N

149 N

150 N

151 N

152 N

153 N

154 N

155 N

156 N

157 N

158 N

159 N

160 N

161 N

162 N

163 N

164 N

165 N

166 N

167 N

168 N

169 N

170 N

171 N

172 N

173 N

174 N

175 N

176 N

177 N

178 N

179 N

180 N

181 N

182 N

183 N

184 N

185 N

186 N

187 N

188 N

189 N

190 N

191 N

192 N

193 N

194 N

195 N

196 N

197 N

198 N

199 N

200 N

201 N

202 N

203 N

204 N

205 N

206 N

207 N

208 N

209 N

210 N

211 N

212 N

213 N

214 N

215 N

216 N

217 N

218 N

219 N

220 N

221 N

222 N

223 N

224 N

225 N

226 N

227 N

228 N

229 N

230 N

231 N

232 N

233 N

234 N

235 N

236 N

237 N

238 N

239 N

240 N

241 N

242 N

243 N

244 N

245 N

246 N

247 N

248 N

249 N

250 N

251 N

252 N

253 N

254 N

255 N

256 N

257 N

258 N

259 N

260 N

261 N

262 N

263 N

264 N

265 N

266 N

267 N

268 N

269 N

270 N

271 N

272 N

273 N

274 N

275 N

276 N

277 N

278 N

279 N

280 N

281 N

282 N

283 N

284 N

285 N

286 N

287 N

288 N

289 N

290 N

291 N

292 N

293 N

294 N

295 N

296 N

297 N

298 N

299 N

300 N

301 N

302 N

303 N

304 N

305 N

306 N

307 N

308 N

309 N

310 N

311 N

312 N

313 N

314 N

315 N

316 N

317 N

318 N

319 N

320 N

321 N

322 N

323 N

324 N

325 N

326 N

327 N

328 N

329 N

330 N

331 N

332 N

333 N

334 N

335 N

336 N

337 N

338 N

339 N

340 N

341 N

342 N

343 N

344 N

345 N

346 N

347 N

348 N

349 N

350 N

351 N

352 N

353 N

354 N

355 N

356 N

357 N

358 N

359 N

360 N

361 N

362 N

363 N

364 N

365 N

366 N

367 N

368 N

369 N

370 N

371 N

372 N

373 N

374 N

375 N

376 N

377 N

378 N

379 N

380 N

381 N

382 N

383 N

384 N

385 N

386 N

387 N

388 N

389 N

390 N

391 N

392 N

393 N

394 N

395 N

396 N

397 N

398 N

399 N

400 N

401 N

402 N

403 N

404 N

405 N

406 N

407 N

408 N

409 N

410 N

411 N

412 N

413 N

414 N

415 N

416 N

417 N

418 N

419 N

420 N

421 N

422 N

423 N

424 N

425 N

426 N

427 N

428 N

429 N

430 N

431 N

432 N

433 N

434 N

435 N

436 N

437 N

438 N

439 N

440 N

441 N

442 N

443 N

444 N

445 N

446 N

447 N

448 N

449 N

450 N

451 N

452 N

453 N

454 N

455 N

456 N

457 N

458 N

459 N

460 N

461 N

462 N

463 N

464 N

465 N

466 N

467 N

468 N

469 N

470 N

471 N

472 N

473 N

474 N

475 N

476 N

477 N

478 N

479 N

480 N

481 N

482 N

483 N

484 N

485 N

486 N

487 N

488 N

489 N

490 N

491 N

492 N

493 N

494 N

495 N

496 N

497 N

498 N

499 N

500 N

501 N

502 N

503 N

504 N

505 N

506 N

507 N

508 N

509 N

510 N

511 N

512 N

513 N

514 N

515 N

516 N

517 N

518 N

519 N

520 N

521 N

522 N

523 N

524 N

525 N

526 N

527 N

528 N

529 N

530 N

531 N

532 N

533 N

534 N

535 N

536 N

537 N

538 N

539 N

540 N

541 N

542 N

543 N

544 N

545 N

546 N

547 N

548 N

549 N

550 N

551 N

552 N

553 N

554 N

555 N

556 N

557 N

558 N

559 N

560 N

561 N

562 N

563 N

564 N

565 N

566 N

567 N

568 N

569 N

570 N

571 N

572 N

573 N

574 N

575 N

576 N

577 N

578 N

579 N

580 N

581 N

582 N

583 N

584 N

585 N

586 N

587 N

588 N

589 N

590 N

591 N

592 N

593 N

594 N

595 N

596 N

597 N

598 N

599 N

600 N

601 N

602 N

603 N

604 N

605 N

606 N

607 N

608 N

609 N

610 N

611 N

612 N

613 N

614 N

615 N

616 N

617 N

618 N

619 N

620 N

621 N

622 N

623 N

624 N

625 N

626 N

627 N

628 N

629 N

630 N

631 N

632 N

633 N

634 N

635 N

636 N

637 N

638 N

639 N

640 N

641 N

642 N

643 N

644 N

645 N

646 N

647 N

648 N

649 N

650 N

651 N

652 N

653 N

654 N

655 N

656 N

657 N

658 N

659 N

660 N

661 N

662 N

663 N

664 N

665 N

666 N

667 N

668 N

669 N

670 N

671 N

672 N

673 N

674 N

675 N

676 N

677 N

678 N

679 N

680 N

681 N

682 N

683 N

684 N

685 N

686 N

687 N

688 N

689 N

690 N

691 N

692 N

693 N

694 N

695 N

696 N

697 N

698 N

699 N

700 N

701 N

702 N

703 N

704 N

705 N

706 N

707 N

708 N

709 N

710 N

711 N

712 N

713 N

714 N

715 N

716 N

717 N

718 N

719 N

720 N

721 N

722 N

723 N

724 N

725 N

726 N

727 N

728 N

729 N

730 N

731 N

732 N

733 N

734 N

735 N

736 N

737 N

738 N

739 N

740 N

741 N

742 N

743 N

744 N

745 N

746 N

747 N

748 N

749 N

750 N

751 N

752 N

753 N

754 N

755 N

756 N

757 N

758 N

759 N

760 N

761 N

762 N

763 N

764 N

765 N

766 N

767 N

768 N

769 N

770 N

771 N

772 N

773 N

774 N

775 N

776 N

777 N

778 N

779 N

780 N

781 N

782 N

783 N

784 N

785 N

786 N

787 N

788 N

789 N

790 N

791 N

792 N

793 N

794 N

795 N

796 N

797 N

798 N

799 N

800 N

801 N

802 N

803 N

804 N

805 N

806 N

807 N

808 N

809 N

810 N

811 N

812 N

813 N

814 N

815 N

816 N

817 N

818 N

819 N

820 N

821 N

822 N

823 N

824 N

825 N

826 N

827 N

828 N

829 N

830 N

831 N

832 N

833 N

834 N

835 N

836 N

837 N

838 N

839 N

840 N

841 N

842 N

843 N

844 N

845 N

846 N

847 N

848 N

849 N

850 N

851 N

852 N

853 N

854 N

855 N

856 N

857 N

858 N

859 N

860 N

861 N

862 N

863 N

864 N

865 N

866 N

867 N

868 N

869 N

870 N

871 N

872 N

873 N

874 N

875 N

876 N

877 N

878 N

879 N

880 N

881 N

882 N

883 N

884 N

885 N

886 N

887 N

888 N

889 N

890 N

891 N

892 N

893 N

894 N

895 N

896 N

897 N

898 N

899 N

900 N

901 N

902 N

903 N

904 N

905 N

906 N

907 N

908 N

909 N

910 N

911 N

912 N

913 N

914 N

915 N

916 N

917 N

918 N

919 N

920 N

921 N

922 N

923 N

924 N

925 N

926 N

927 N

928 N

929 N

930 N

931 N

932 N

933 N

934 N

935 N

936 N

937 N

938 N

939 N

940 N

941 N

942 N

943 N

944 N

945 N

946 N

947 N

948 N

949 N

950 N

951 N

952 N

953 N

954 N

955 N

956 N

957 N

958 N

959 N

960 N

961 N

962 N

963 N

964 N

965 N

966 N

967 N

968 N

969 N

970 N

971 N

972 N

973 N

974 N

975 N

976 N

977 N

978 N

979 N

980 N

981 N

982 N

983 N

984 N

985 N

986 N

987 N

988 N

989 N

990 N

991 N

992 N

993 N

994 N

995 N

996 N

997 N

998 N

999 N

1000 N