

UNITED STATES  
DEPARTMENT OF THE INTERIOR  
GEOLOGICAL SURVEY

## APPLICATION FOR PERMIT TO DRILL, DEEPEN, OR PLUG BACK

## 1a. TYPE OF WORK

DRILL ☒DEEPEN ☐PLUG BACK ☐

## b. TYPE OF WELL

OIL  
WELL ☐GAS  
WELL ☒

OTHER

SINGLE  
ZONE ☒MULTIPLE  
ZONE ☐

## 2. NAME OF OPERATOR

Oklahoma Oil Company

## 3. ADDRESS OF OPERATOR

Suite 1120, One Energy Square, Dallas, Texas 75206

## 4. LOCATION OF WELL (Report location clearly and in accordance with any State requirements.\*)

At surface

1450' FNL &amp; 1500' FWL

At proposed prod. zone

Same

## 14. DISTANCE IN MILES AND DIRECTION FROM NEAREST TOWN OR POST OFFICE\*

6 miles southeast of Blanco Trading Post

## 15. DISTANCE FROM PROPOSED\*

LOCATION TO NEAREST  
PROPERTY OR LEASE LINE, FT.  
(Also to nearest drlg. unit line, if any)

1450

## 16. NO. OF ACRES IN LEASE

1240

17. NO. OF ACRES ASSIGNED  
TO THIS WELL

160

## 18. DISTANCE FROM PROPOSED LOCATION\*

TO NEAREST WELL, DRILLING, COMPLETED,  
OR APPLIED FOR, ON THIS LEASE, FT.

## 19. PROPOSED DEPTH

2100

## 20. ROTARY OR CABLE TOOLS

Rotary

## 21. ELEVATIONS (Show whether DF, RT, GR, etc.)

6866

## 22. APPROX. DATE WORK WILL START\*

1-12-77

## 23.

## PROPOSED CASING AND CEMENTING PROGRAM

SIZE OF HOLE	SIZE OF CASING	WEIGHT PER FOOT	SETTING DEPTH	QUANTITY OF CEMENT
12 1/4	8 5/8	20#	45'	35 sacks class "B" + 2% CaCl <sub>2</sub>
6 1/2	4 1/2	10.5#	2100'	100 sacks 65-35 class "B" Poz + 12% gel
				150 sacks class "B" + 2% CaCl <sub>2</sub>

Move in - rig up rotary tools. Drill 12 1/4 hole to 45 feet. Set 45 feet of new 8 5/8" 20# casing and cement as indicated above. Wait on cement 12 hours. Install 6" 900 series blow out preventer and test. Drill 6 1/2 hole to 2100 feet. No abnormal temperature or pressure is expected. Well will be drilled with a gel-chem mud to total depth with mud characteristics of 9.0-9.2# per gallon, WL 8-10 cc and 30-40 viscosity. Open hole logs to be run as follows: DIL, FDC-CNL and GR-Caliper. If commercial, 4 1/2 casing will be run and cemented as indicated above. If non-commercial, well will be plugged and abandoned as per U.S.G.S. instructions.

GAS NOT DEDICATED

DEC 30 1976

IN ABOVE SPACE DESCRIBE PROPOSED PROGRAM: If proposal is to deepen or plug back, give data on present productive zone and proposed new productive zone. If proposal is to drill or deepen directionally, give pertinent data on subsurface locations and measurements. Give blowout preventer program, if any.

## 24.

SIGNED

John Alexander

TITLE

Agent

DATE

12-30-76

PERMIT NO.

APPROVAL DATE

APPROVED BY

TITLE

CONDITIONS OF APPROVAL, IF ANY:

\*See Instructions On Reverse Side

# NEW MEXICO OIL CONSERVATION COMMISSION

## WELL LOCATION AND ACERAGE DEDICATION PLAT

All distances must be from the outer boundaries of the Section

Operator <b>OKLAHOMA OIL COMPANY</b>			Lease <b>FRENCH WASH</b>		Well No. <b>2</b>
Unit Letter <b>F</b>	Section <b>8</b>	Township <b>24 NORTH</b>	Range <b>8 WEST</b>	County <b>SAN JUAN</b>	

Actual Footage Location of Well:  
**1450** feet from the **NORTH** line and **1500** feet from the **WEST** line

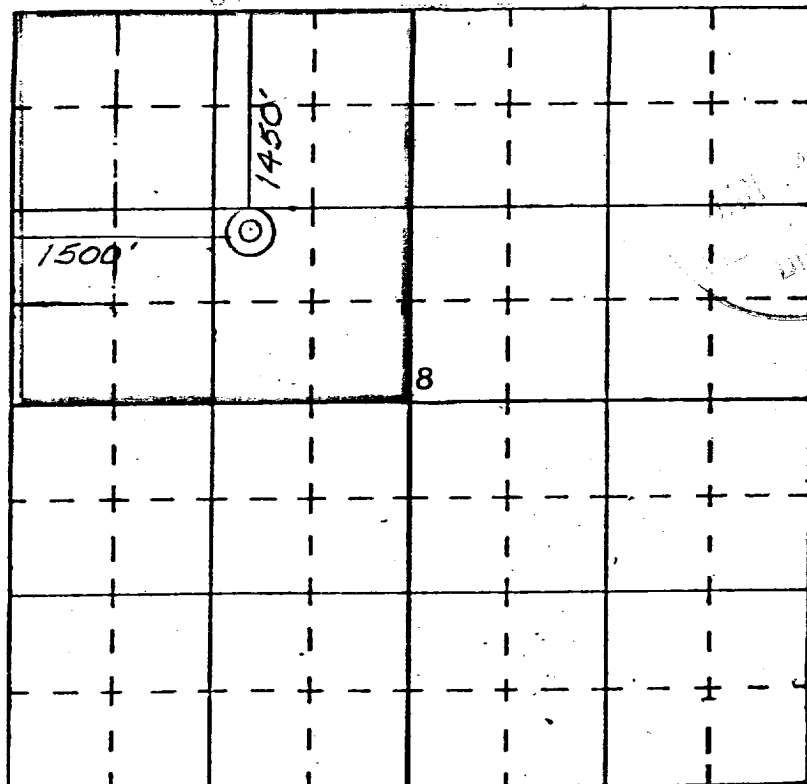
Ground Level Elev. <b>6866</b>	Producing Formation <b>Pictured Cliff</b>	Pool <b>Wildcat</b>	Dedicated Acreage: <b>160</b> Acres
-----------------------------------	--	------------------------	--

1. Outline the acreage dedicated to the subject well by colored pencil or hachure marks on the plat below.
2. If more than one lease is dedicated to the well, outline each and identify the ownership thereof (both as to working interest and royalty).
3. If more than one lease of different ownership is dedicated to the well, have the interests of all owners been consolidated by communitization, unitization, force-pooling, etc?

( ) Yes ( ) No If answer is "yes," type of consolidation \_\_\_\_\_

If answer is "no," list the owners and tract descriptions which have actually consolidated. (Use reverse side of this form if necessary.) \_\_\_\_\_

No allowable will be assigned to the well until all interests have been consolidated (by communitization, unitization, forced-pooling, or otherwise) or until a non standard unit, eliminating such interests, has been approved by the Commission.



### CERTIFICATION

I hereby certify that the information contained herein is true and complete to the best of my knowledge and belief.

John Alexander  
 Name  
 Agent  
 Position  
 Oklahoma Oil Company  
 Company  
 12-30-76  
 Date

I hereby certify that the well location shown on this plat was plotted from field notes of actual surveys made by me or under my supervision and that the same is true and correct to the best of my knowledge and belief.

28 December 1976

Date Surveyed  
*James P. Leese*  
 Registered Professional Engineer  
 and/or Land Surveyor **James P. Leese**

1463

Certificate No.