

UNITED STATES
DEPARTMENT OF THE INTERIOR
GEOLOGICAL SURVEY

APPLICATION FOR PERMIT TO DRILL, DEEPEN, OR PLUG BACK

1a. TYPE OF WORK

DRILL ☒

DEEPEN ☐

PLUG BACK ☐

b. TYPE OF WELL

OIL WELL ☐

GAS WELL ☒

OTHER

SINGLE ZONE ☐

MULTIPLE ZONE ☐

2. NAME OF OPERATOR

Dugan Production Corp.

3. ADDRESS OF OPERATOR

Box 234, Farmington, NM 87401

4. LOCATION OF WELL (Report location clearly and in accordance with any State requirements.)*

At surface

1490' FSL - 1850' FEL

At proposed prod. zone

14. DISTANCE IN MILES AND DIRECTION FROM NEAREST TOWN OR POST OFFICE*

7 miles northeast of Nageezi, New Mexico

15. DISTANCE FROM PROPOSED*

LOCATION TO NEAREST PROPERTY OR LEASE LINE, FT. (Also to nearest drg. unit line, if any)

1150'

16. NO. OF ACRES IN LEASE

1480

17. NO. OF ACRES ASSIGNED TO THIS WELL

160

18. DISTANCE FROM PROPOSED LOCATION* TO NEAREST WELL, DRILLING, COMPLETED, OR APPLIED FOR, ON THIS LEASE, FT.

Approx 1/2 mile

19. PROPOSED DEPTH

2000'

20. ROTARY OR CABLE TOOLS

Rotary

21. ELEVATIONS (Show whether DF, RT, GR, etc.)

7007' GR

22. APPROX. DATE WORK WILL START*

4-18-77

23. PROPOSED CASING AND CEMENTING PROGRAM

| SIZE OF HOLE | SIZE OF CASING | WEIGHT PER FOOT | SETTING DEPTH | QUANTITY OF CEMENT |
|--------------|----------------|-----------------|---------------|--------------------|
| 8-3/4" | 7" | 20# | 60' | 30 sx |
| 5" | 2-7/8" | 6.4# | 2000' | 100 sx |

Plan to drill well using mud as circulating medium to test Pictured Cliffs formation. If productive, plan to set 2-7/8" tubing for casing, selectively perforate, frac, clean out after frac, run 1-1/4" tubing, and complete well.

Do not plan to use a blowout preventer while drilling. Will use master valve and stripper head while completing well.

NMERB Requirement: Gas dedicated to Northwest Pipeline Corporation.

APR 6 1977
OIL CO. COM.
DIST. 3

IN ABOVE SPACE DESCRIBE PROPOSED PROGRAM: If proposal is to deepen or plug back, give data on present productive zone and proposed new productive zone. If proposal is to drill or deepen directionally, give pertinent data on subsurface locations and measured and true vertical depths. Give blowout preventer program, if any.

24.

SIGNED

Thomas A. Dugan

TITLE

Petroleum Engineer

DATE

3-30-77

(This space for Federal or State office use)

PERMIT NO.

APPROVAL DATE

APPROVED BY

TITLE

CONDITIONS OF APPROVAL, IF ANY:

*See Instructions On Reverse Side

NEW MEXICO OIL CONSERVATION COMMISSION
WELL LOCATION AND ACREAGE DEDICATION PLAT

Form C-102
Supersedes C-128
Effective 1-1-65

All distances must be from the outer boundaries of the Section.

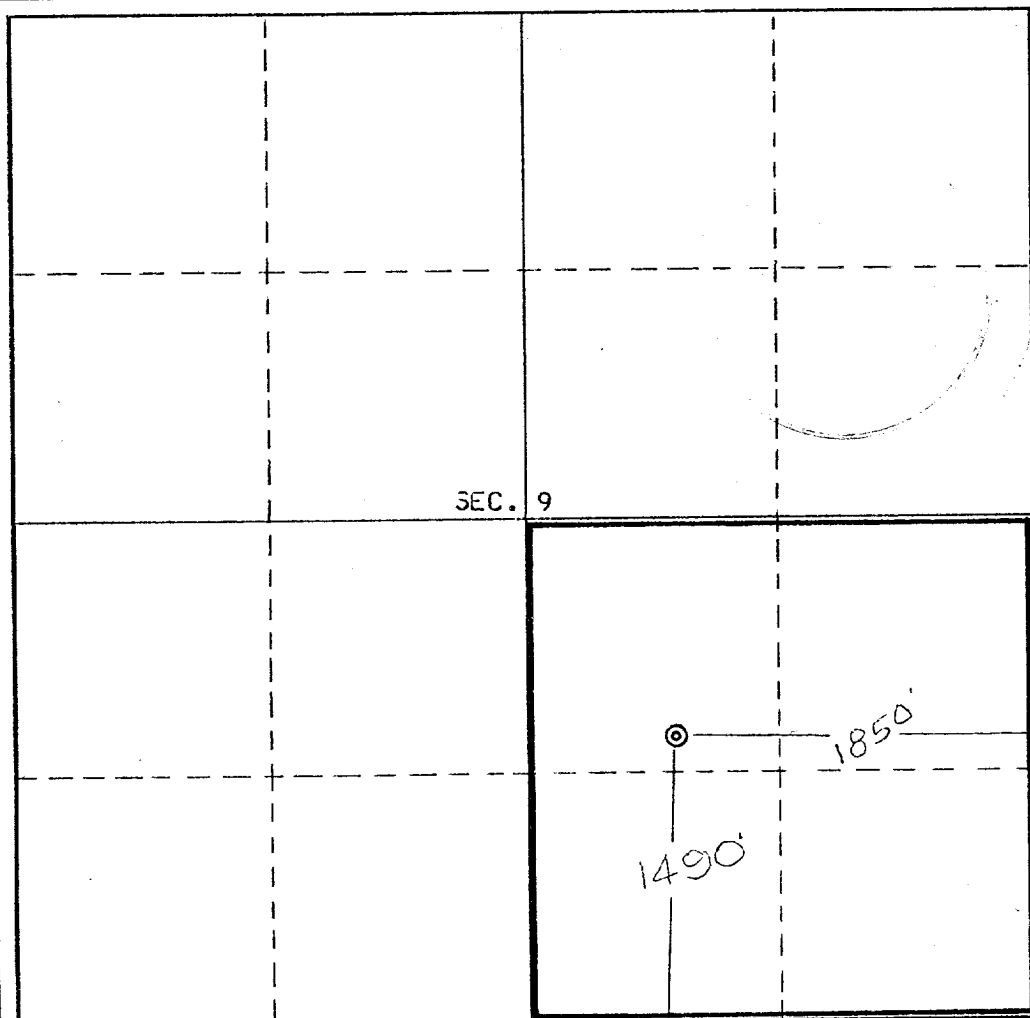
| | | | | | |
|--|---|-----------------------------|---------------------------|--|----------------------|
| Operator Dugan Production Corporation | | | Lease Mountain | | Well No. 5 |
| Unit Letter J | Section 9 | Township 24 North | Range 8 West | County San Juan | |
| Actual Footage Location of Well: 1490 feet from the South line and 1850 feet from the East line | | | | | |
| Ground Level Elev. 7007' | Producing Formation Pictured Cliffs | | Pool Potwin EXT | Dedicated Acreage: 160 Acres | |

1. Outline the acreage dedicated to the subject well by colored pencil or hachure marks on the plat below.
2. If more than one lease is dedicated to the well, outline each and identify the ownership thereof (both as to working interest and royalty).
3. If more than one lease of different ownership is dedicated to the well, have the interests of all owners been consolidated by communitization, unitization, force-pooling, etc?

☐ Yes ☐ No If answer is "yes," type of consolidation _____

If answer is "no," list the owners and tract descriptions which have actually been consolidated. (Use reverse side of this form if necessary.) _____

No allowable will be assigned to the well until all interests have been consolidated (by communitization, unitization, forced-pooling, or otherwise) or until a non-standard unit, eliminating such interests, has been approved by the Commission.



CERTIFICATION

I hereby certify that the information contained herein is true and complete to the best of my knowledge and belief.

Name
Thomas A. Dugan
Position
Petroleum Engineer
Company
Dugan Production Corp.
Date
3-30-77

REGISTERED LAND SURVEYOR
I hereby certify that the well location shown on this plat was plotted from field notes of actual surveys made by me or under my supervision, and that the same is true and correct to the best of my knowledge and belief.
E.V. Echohawk

Date Surveyed
March 20, 1977

Registered Professional Engineer and/or Land Surveyor

Certificate No. **3602**
E.V. Echohawk LS

0 330 660 990 1320 1650 1980 2310 2640 2000 1500 1000 500 0