



STATE OF NEW MEXICO
ENERGY, MINERALS AND NATURAL RESOURCES DEPARTMENT

OIL CONSERVATION DIVISION

2040 S. PACHECO
SANTA FE, NEW MEXICO 87505
(505) 827-7131

July 8, 1996

96552
RECEIVED
JUL 12 1996
OIL CON. DIV.
DIST. 3

Dugan Production Corporation
P.O. Box 420
Farmington, New Mexico 87499-0420
Attention: Jim L. Jacobs

Administrative Order NSL-3691

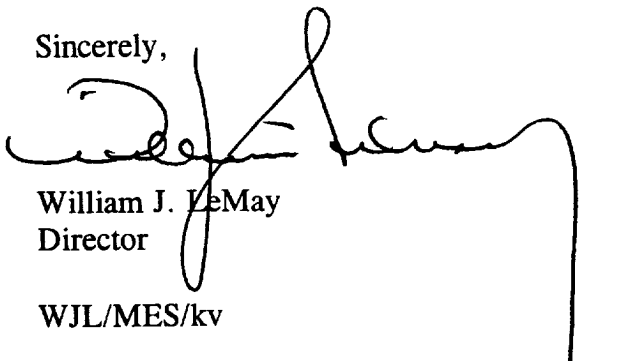
Dear Mr. Jacobs:

Reference is made to your applications dated May 21 and June 10, 1996 for a non-standard oil well location within the White Wash Mancos-Dakota Oil Pool for your existing Blanco Wash Well No. 1 (API No. 30-045-22473), located 1550 feet from the South line and 1490 feet from the East line (Unit J) of Section 2, Township 24 North, Range 9 West, NMPM, San Juan County, New Mexico.

The application has been duly filed under the provisions of Rule 104.F of the General Rules and Regulations of the New Mexico Oil Conservation Division ("Division"), revised by Division Order No. R-10533, issued by the Oil Conservation Commission in Case 11,351 on January 18, 1996.

By the authority granted me under the provisions of Division General Rule 104.F(2), the above-described unorthodox oil well location is hereby approved.

Sincerely,


William J. LeMay
Director

WJL/MES/kv

cc: Oil Conservation Division - Aztec
US Bureau of Land Management - Farmington



dugan production corp.

June 10, 1996

Mr. Michael E. Stogner
New Mexico Oil Conservation Division
2040 South Pacheco St.
Santa Fe, NM 87505

**Re: Application for Administrative Approval of
Unorthodox Location for Dugan Production Corp's Blanco Wash #1
1550' FSL & 1490' FEL (NW/4 SE/4)
Unit J, Section 2, T24N, R9W
San Juan County, New Mexico
Whitewash Mancos-Dakota Oil Pool**

Dear Mr. Stogner:

Dugan Production Corp. hereby requests approval for an unorthodox location for the referenced well. Copies of the well location plat (NMOCD Form C-102), topographic map, production map, and a map showing offsetting operators are attached for your reference.

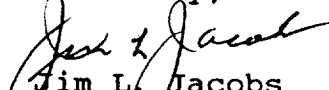
Our original intent in drilling the subject well was to test the Gallup through the Dakota formations. The location was orthodox at that time for dedicated acreage of a Dakota gas well.

After drilling and logging, the Dakota formation was considered to be non-productive and the well was completed in the Gallup and Greenhorn formations.

After completing the well in the Whitewash Mancos-Dakota Oil Pool, our well location was not orthodox as it had previously been for a gas well, therefore necessitating this application for unorthodox location.

A copy of this application is being submitted to all offset operators by certified mail with a request that they furnish your office in Santa Fe with a Waiver of Objection.

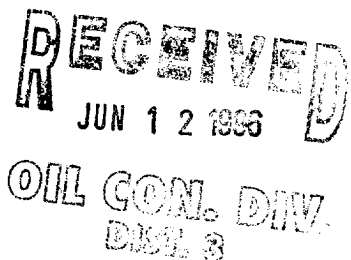
Sincerely,


Jim L. Jacobs
Vice-President

KF/cg

attachs.

cc: Mr. Ernie Busch, NMOCD Aztec
BLM, Farmington
Offset Operators (Bureau of Indian Affairs, Navajo Allotted)



District I
PO Box 1900, Hobbs, NM 88241-1900
District II
PO Drawer DD, Artesia, NM 88211-0719
District III
1000 Rio Brazos Rd., Aztec, NM 87410
District IV
PO Box 2088, Santa Fe, NM 87504-2088

State of New Mexico
Energy, Minerals & Natural Resources Department

OIL CONSERVATION DIVISION
PO Box 2088
Santa Fe, NM 87504-2088

Form C-102
Revised February 21, 1994
Instructions on back
Submit to Appropriate District Office
State Lease - 4 Copies
Fee Lease - 3 Copies

☐ AMENDED REPORT

WELL LOCATION AND ACREAGE DEDICATION PLAT

1 API Number 30 045 22473		2 Pool Code 64290		3 Pool Name White Wash Mancos-Dakota Oil Pool		
4 Property Code 003596		5 Property Name Blanco Wash			6 Well Number 1	
7 OGRJD No. 006515		8 Operator Name Dugan Production Corp.			9 Elevation 6588' GL	

10 Surface Location

UL or lot no. J	Section 2	Township 24N	Range 9W	Lot Idn	Feet from the 1550	North/South line South	Feet from the 1490	East/West line East	County San Juan
--------------------	--------------	-----------------	-------------	---------	-----------------------	---------------------------	-----------------------	------------------------	--------------------

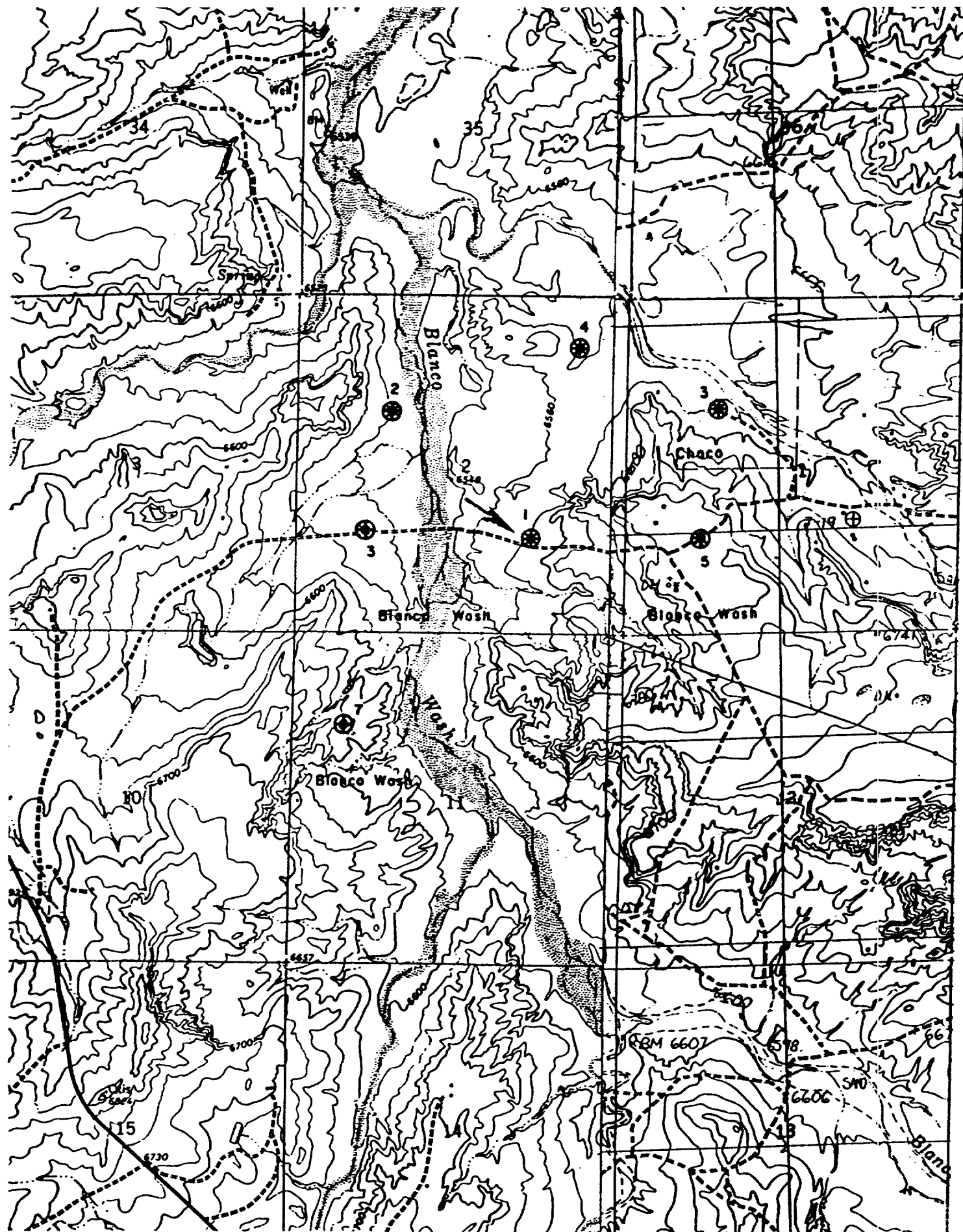
11 Bottom Hole Location If Different From Surface

UL or lot no.	Section	Township	Range	Lot Idn	Feet from the	North/South line	Feet from the	East/West line	County
---------------	---------	----------	-------	---------	---------------	------------------	---------------	----------------	--------

12 Dedicated Acres 40	13 Joint or Infill	14 Consolidation Code	15 Order No.
--------------------------	--------------------	-----------------------	--------------

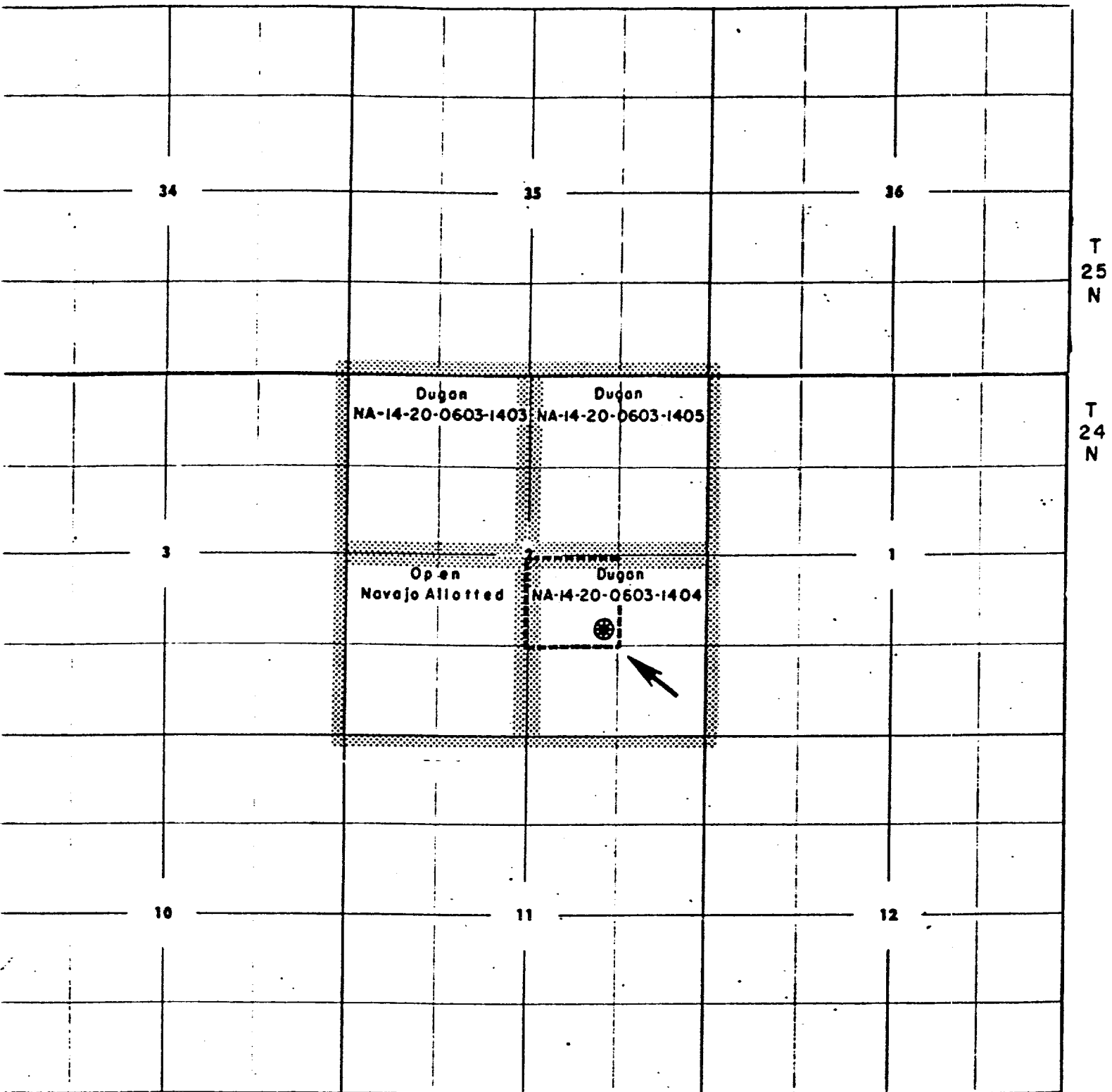
NO ALLOWABLE WILL BE ASSIGNED TO THIS COMPLETION UNTIL ALL INTERESTS HAVE BEEN CONSOLIDATED
OR A NON-STANDARD UNIT HAS BEEN APPROVED BY THE DIVISION

16		17 OPERATOR CERTIFICATION I hereby certify that the information contained herein is true and complete to the best of my knowledge and belief Signature Jim L. Jacobs Printed Name Vice-President Title 6/10/96 Date	
Sec. 2		OIL CON. DIV. DIST. 3 JUN 12 1996 RECEIVED	
Nav. Alltd. 14-20-0603- 1404		18 SURVEYOR CERTIFICATION I hereby certify that the well location shown on this plat was plotted from field notes of actual surveys made by me or under my supervision, and that the same is true and correct to the best of my belief. March 16, 1977 Date of Survey Signature and Seal of Professional Surveyor: Surveyed by E.V. Echohawk, L.S. (see original plat for signature) 3602 Certificate Number	
1490'		1550'	



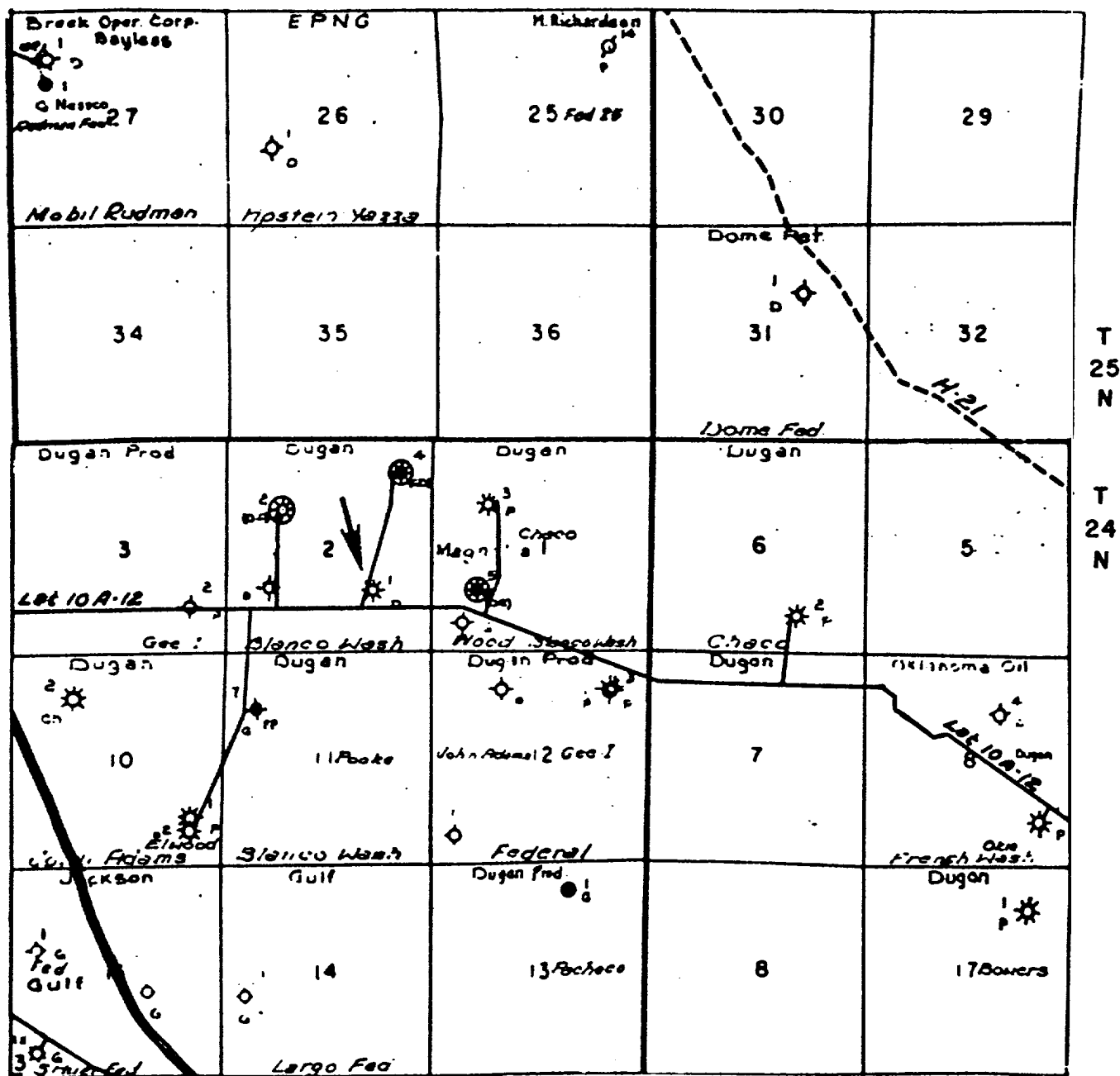
Application for Administrative Approval of Unorthodox Location
Dugan Production Corp's Blanco Wash #1
1550' FSL & 1490' FEL, Unit J, Sec. 2, T24N, R9W, San Juan County, NM
Topographic Map

R-9-W



Application for Administrative Approval of Unorthodox Location
Dugon Production Corp's Blanco Wash #1
1550' FSL & 1490' FEL, Unit J, Sec. 2, T24N, R9W
Whitewash Mancos-Dakota Oil Pool, San Juan County, NM
Offsetting Operators Map

R-9-W R-8-W



Application for Administrative Approval of Unorthodox Location
 Dugan Production Corp's Blanco Wash #1
 1550' FSL & 1490' FEL, Unit J, Sec. 2, T24N, R9W
 Whitewash Mancos-Dakota Oil Pool, San Juan County, NM
 Production Map

Location of Existing Wells

- ⊗ Abandoned Wells
- Drilling Wells
- ⚙ Producing Wells