

UNITED STATES
DEPARTMENT OF THE INTERIOR
GEOLOGICAL SURVEY

APPLICATION FOR PERMIT TO DRILL, DEEPEN, OR PLUG BACK

1a. TYPE OF WORK

DRILL ☒DEEPEN ☐PLUG BACK ☐

b. TYPE OF WELL

OIL

WELL ☒

GAS

WELL ☐

OTHER

SINGLE
ZONE ☐MULTIPLE
ZONE ☐

2. NAME OF OPERATOR

Dugan Production Corp.

3. ADDRESS OF OPERATOR

Box 234, Farmington, NM 87401

4. LOCATION OF WELL (Report location clearly and in accordance with any State requirements.)*

At surface

1650' FNL - 330' FEL Sec 5 T24N R10W

At proposed prod. zone

As above

14. DISTANCE IN MILES AND DIRECTION FROM NEAREST TOWN OR POST OFFICE*

15 miles south of Bloomfield, New Mexico

15. DISTANCE FROM PROPOSED*

LOCATION TO NEAREST

PROPERTY OR LEASE LINE, FT.

(Also to nearest drlg. unit line, if any)

330'

16. NO. OF ACRES IN LEASE

160.76

18. DISTANCE FROM PROPOSED LOCATION*
TO NEAREST WELL, DRILLING, COMPLETED,
OR APPLIED FOR, ON THIS LEASE, FT.

990'

19. PROPOSED DEPTH

5400'

17. NO. OF ACRES ASSIGNED
TO THIS WELL.

80 acres

20. ROTARY OR CABLE TOOLS

Rotary

21. ELEVATIONS (Show whether DF, RT, GR, etc.)

6895' GR 6907' RKB

22. APPROX. DATE WORK WILL START*

9-15-78

23.

PROPOSED CASING AND CEMENTING PROGRAM

SIZE OF HOLE	SIZE OF CASING	WEIGHT PER FOOT	SETTING DEPTH	QUANTITY OF CEMENT
12-1/4	8-5/8	24#	200'	125 sx
7-7/8	4-1/2	10.5#	5400'	1230 cu ft

A 12-1/4" hole will be spudded and drilled to 200' and 8-5/8" OD 24# 8Rd ST&C csg will be run and cemented to surface.

A 7-7/8" hole will then be drilled to approximately 5400' to test the Gallup formation. If commercial production is indicated 4-1/2" csg will be run and cemented and the well selectively perforated and sand-water fraced.

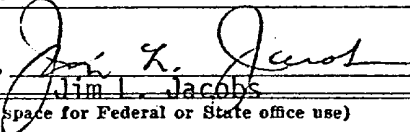
A 10" 900 Series double gate BOP will be furnished by the drilling contractor while drilling and a 6" 900 Series BOP used while completing well.

NMERB Requirement: Gas is dedicated to El Paso Natural Gas Co.

IN ABOVE SPACE DESCRIBE PROPOSED PROGRAM: If proposal is to deepen or plug back, give data on present productive zone and proposed new productive zone. If proposal is to drill or deepen directionally, give pertinent data on subsurface locations and measured and true vertical depths. Give blowout preventer program, if any.

24.

SIGNED



TITLE

Geologist

DATE

8-14-78

(This space for Federal or State office use)

PERMIT NO.

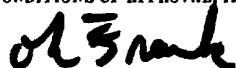
APPROVAL DATE

APPROVED BY

TITLE

DATE

CONDITIONS OF APPROVAL, IF ANY:



*See Instructions On Reverse Side

NEW MEXICO OIL CONSERVATION COMMISSION
WELL LOCATION AND ACREAGE DEDICATION PLAT

Form C-102
Supersedes C-128
Effective 1-1-65

All distances must be from the outer boundaries of the Section.

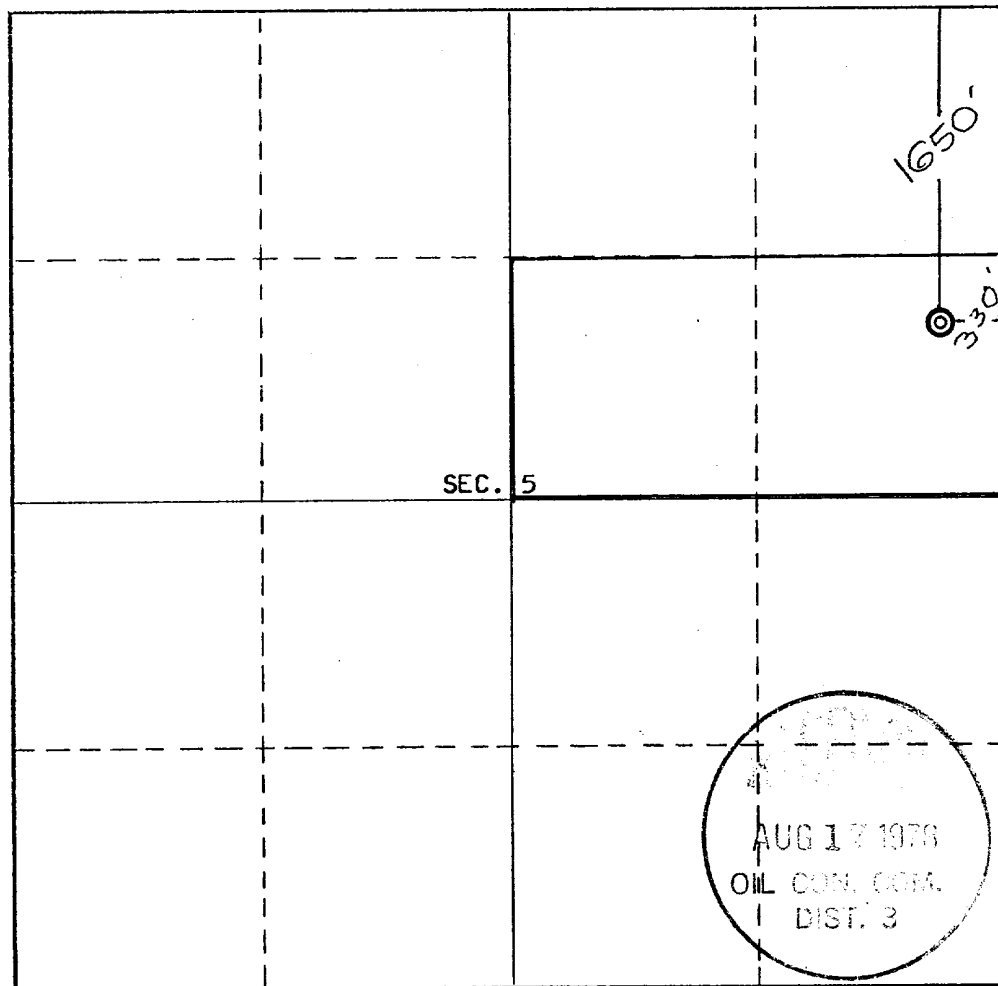
Operator Dugan Production Corporation			Lease Sears Roebuck			Well No. 2		
Unit Letter H	Section 5	Township 24 North	Range 10 West	County San Juan				
Actual Footage Location of Well: 1650 feet from the North line and 330 feet from the East line								
Ground Level Elev. 6895	Producing Formation Gallup		Pool Bisti Lower Gallup ext.			Dedicated Acreage: 80 Acres		

1. Outline the acreage dedicated to the subject well by colored pencil or hatchure marks on the plat below.
2. If more than one lease is dedicated to the well, outline each and identify the ownership thereof (both as to working interest and royalty).
3. If more than one lease of different ownership is dedicated to the well, have the interests of all owners been consolidated by communitization, unitization, force-pooling, etc?

☐ Yes ☐ No If answer is "yes," type of consolidation _____

If answer is "no," list the owners and tract descriptions which have actually been consolidated. (Use reverse side of this form if necessary.) _____

No allowable will be assigned to the well until all interests have been consolidated (by communitization, unitization, forced-pooling, or otherwise) or until a non-standard unit, eliminating such interests, has been approved by the Commission.



CERTIFICATION

I hereby certify that the information contained herein is true and complete to the best of my knowledge and belief.

Name
Jim L. Jacobs
Position
Geologist
Company
Dugan Production Corp.
Date
8-14-78

REGISTERED LAND SURVEYOR
STATE OF NEW MEXICO
Reg. No. **3602**
I hereby certify that the well location shown on this plat was obtained from field notes of actual surveys made by me or under my supervision, and that the same is true and correct to the best of my knowledge and belief.
ERNEST V. ECHOHAWK

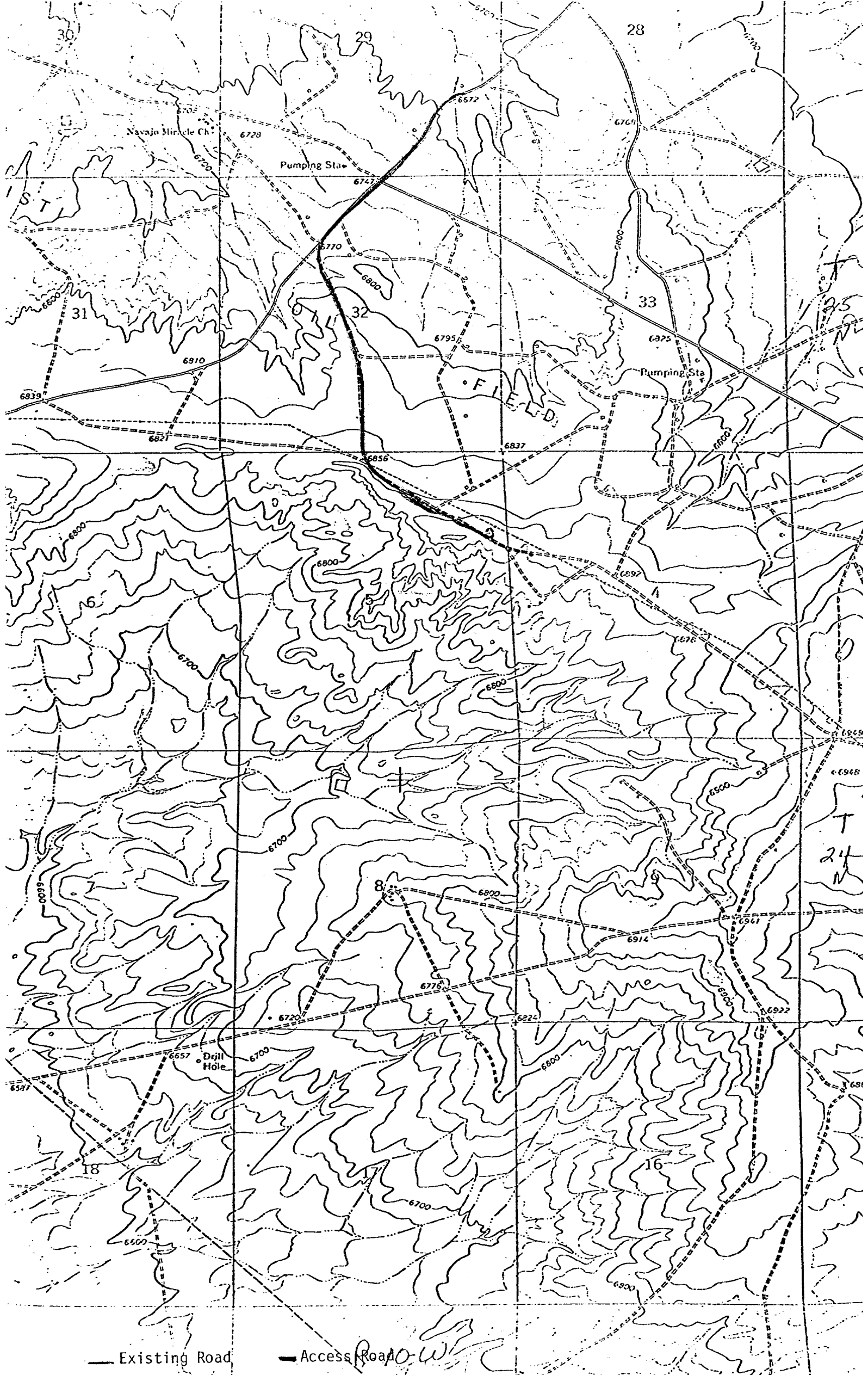
Date Surveyed
August 9, 1978

Registered Professional Engineer and/or Land Surveyor

Ernest V. Echohawk
Certificate No. **3602**

E.V. Echohawk LS

0 330 660 990 1320 1650 1980 2310 2640 2000 1500 1000 500 0



— Existing Road

- - - Access Road