

UNITED STATES
DEPARTMENT OF THE INTERIOR
GEOLOGICAL SURVEY

APPLICATION FOR PERMIT TO DRILL, DEEPEN, OR PLUG BACK

1a. TYPE OF WORK

DRILL ☒DEEPEN ☐PLUG BACK ☐

b. TYPE OF WELL

OIL
WELL ☐GAS
WELL ☒

OTHER

SINGLE
ZONE ☐MULTIPLE
ZONE ☐

2. NAME OF OPERATOR

Dugan Production Corp.

3. ADDRESS OF OPERATOR

Box 208, Farmington, NM 87401

4. LOCATION OF WELL (Report location clearly and in accordance with any State requirements.)*
At surface

810' FNL - 1800' FEL

At proposed prod. zone

14. DISTANCE IN MILES AND DIRECTION FROM NEAREST TOWN OR POST OFFICE*

2 miles southeast of Blanco Trading Post

15. DISTANCE FROM PROPOSED*

LOCATION TO NEAREST
PROPERTY OR LEASE LINE, FT.
(Also to nearest drlg. unit line, if any)

810'

16. NO. OF ACRES IN LEASE

800

17. NO. OF ACRES ASSIGNED
TO THIS WELL

160

18. DISTANCE FROM PROPOSED LOCATION*
TO NEAREST WELL, DRILLING, COMPLETED,
OR APPLIED FOR, ON THIS LEASE, FT.

19. PROPOSED DEPTH

1750'

20. ROTARY OR CABLE TOOLS

Rotary

21. ELEVATIONS (Show whether DF, RT, GR, etc.)

6827' GR

22. APPROX. DATE WORK WILL START*

Dec. 1, 1979

23.

PROPOSED CASING AND CEMENTING PROGRAM

SIZE OF HOLE	SIZE OF CASING	WEIGHT PER FOOT	SETTING DEPTH	QUANTITY OF CEMENT
7-3/4"	5-1/2"	14#	90'	20 sx
4-3/4"	2-7/8"	6.4#	1750'	90 sx

Plan to drill 4-3/4" hole with air or minimum mud to test Pictured Cliffs Fm. If productive, plan to set 2-7/8" tbg for csg, selectively perforate, frac, cleanout after frac, run 1-1/4" tbg and complete well.

Plan to use 3000 psi BOP per attached schematic diagram.
master valve and stripper head while completing.

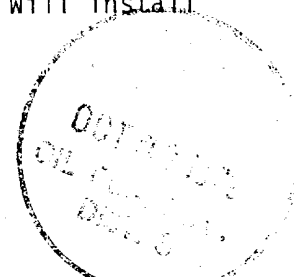
Will install

RECEIVED

OCT 25 1979

U. S. GEOLOGICAL SURVEY
FARMINGTON, N. M.

gas not debilitated



IN ABOVE SPACE DESCRIBE PROPOSED PROGRAM: If proposal is to deepen or plug back, give data on present productive zone and proposed new productive zone. If proposal is to drill or deepen directionally, give pertinent data on subsurface locations and measured and true vertical depths. Give blowout preventer program, if any.

24.

SIGNED

Thomas A. Dugan

TITLE Petroleum Engineer

DATE 10-19-79

(This space for Federal or State office use)

PERMIT NO.

APPROVAL DATE

APPROVED BY

TITLE

DATE

CONDITIONS OF APPROVAL, IF ANY:

ok Frank

*See Instructions On Reverse Side

NMDCG

NEW MEXICO OIL CONSERVATION COMMISSION
WELL LOCATION AND ACREAGE DEDICATION PLAT

Form C-102
Supersedes C-128
Effective 1-1-55

All distances must be from the outer boundaries of the Section.

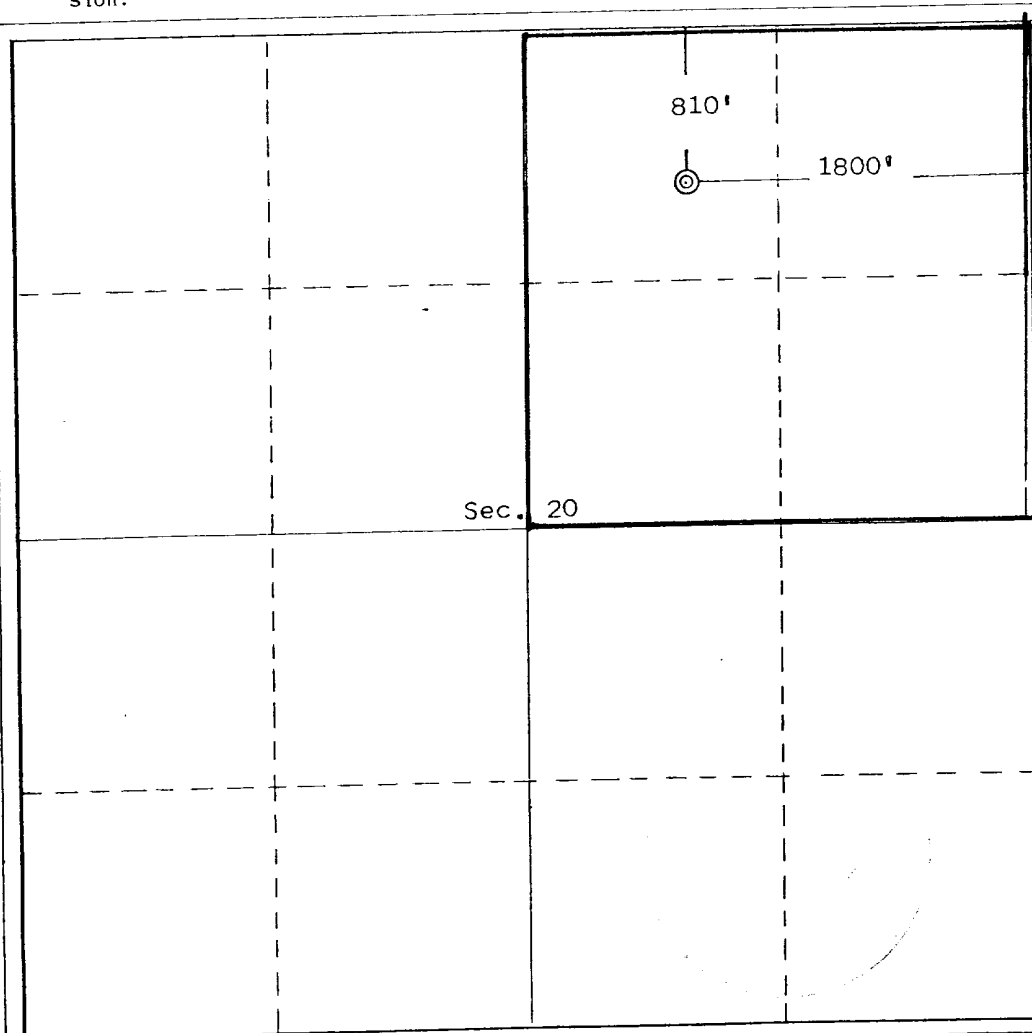
Operator Dugan Production Corporation			Lease Harvey		Well No. #1
Unit Letter B	Section 20	Township 24 North	Range 9 West	County San Juan	
Actual Footage Location of Well: 810 feet from the North line and 1800 feet from the East line					
Ground Level Elev. 6827	Producing Formation Pictured Cliffs		Pool Wildcat	Dedicated Acreage: 160 Acres	

1. Outline the acreage dedicated to the subject well by colored pencil or hachure marks on the plat below.
2. If more than one lease is dedicated to the well, outline each and identify the ownership thereof (both as to working interest and royalty).
3. If more than one lease of different ownership is dedicated to the well, have the interests of all owners been consolidated by communitization, unitization, force-pooling, etc?

☐ Yes ☐ No If answer is "yes," type of consolidation _____

If answer is "no," list the owners and tract descriptions which have actually been consolidated. (Use reverse side of this form if necessary.) _____

No allowable will be assigned to the well until all interests have been consolidated (by communitization, unitization, forced-pooling, or otherwise) or until a non-standard unit, eliminating such interests, has been approved by the Commission.



CERTIFICATION

I hereby certify that the information contained herein is true and complete to the best of my knowledge and belief.

Name *original signed by*
Thomas A. Dugan

Position
Petroleum Engineer

Company
Dugan Production Corp.

Date
10-19-79

I hereby certify that the well location shown on this plat was plotted from field notes of actual surveys made by me or under my supervision, and that the same is true and correct to the best of my knowledge and belief.

Date Surveyed
October 6, 1979

Registered Professional Engineer
and/or Land Surveyor

Edgar L. Risenhoover
Certificate No. **5979**

Edgar L. Risenhoover, L.S.

0 330 660 990 1320 1650 1980 2310 2640 2000 1500 1000 500 0

