

UNITED STATES
DEPARTMENT OF THE INTERIOR
GEOLOGICAL SURVEY

APPLICATION FOR PERMIT TO DRILL, DEEPEN, OR PLUG BACK

1a. TYPE OF WORK

DRILL ☒DEEPEN ☐PLUG BACK ☐

b. TYPE OF WELL

OIL
WELL ☐GAS
WELL ☒

OTHER

SINGLE
ZONE ☐MULTIPLE
ZONE ☐

2. NAME OF OPERATOR

Dugan Production Corp.

3. ADDRESS OF OPERATOR

Box 208, Farmington, NM 87401

4. LOCATION OF WELL (Report location clearly and in accordance with any State requirements.)*

At surface

1850' FSL - 800' FWL

At proposed prod. zone

14. DISTANCE IN MILES AND DIRECTION FROM NEAREST TOWN OR POST OFFICE*

5 miles southwest of Blanco Trading Post

15. DISTANCE FROM PROPOSED*

LOCATION TO NEAREST

PROPERTY OR LEASE LINE, FT.

(Also to nearest drig. unit line, if any)

800'

16. NO. OF ACRES IN LEASE

1721.01

17. NO. OF ACRES ASSIGNED
TO THIS WELL

w/ 321.01

18. DISTANCE FROM PROPOSED LOCATION*

TO NEAREST WELL, DRILLING, COMPLETED,

OR APPLIED FOR, ON THIS LEASE, FT. approx. 3/4 mi.

19. PROPOSED DEPTH

6150'

20. ROTARY OR CABLE TOOLS

Rotary

21. ELEVATIONS (Show whether DF, RT, GR, etc.)

6975' GR

22. APPROX. DATE WORK WILL START*

November 15, 1979

23.

PROPOSED CASING AND CEMENTING PROGRAM

SIZE OF HOLE	SIZE OF CASING	WEIGHT PER FOOT	SETTING DEPTH	QUANTITY OF CEMENT
12-1/4"	8-5/8"	24# New	225'	125 sx
7-7/8"	4-1/2"	10.5# New	6150'	700 sx in two stages

Plan to drill with mud to test Basin Dakota Formation. Plan to run IES and CDL logs to TD. If productive, will set 4-1/2" casing, cement with two stages, selectively perforate, frac, clean out after frac, run 1-1/4" tbg and complete well.

Plan to use BOP furnished by rig while drilling (10" 3000 psi hydraulic)

Plan to use BOP rental while completing (6" 3000 psi double gate manual)

NMERB: Gas dedicated to El Paso.

RECEIVED

OCT 22 1979

U. S. GEOLOGICAL SURVEY
FARMINGTON, N. M.

IN ABOVE SPACE DESCRIBE PROPOSED PROGRAM: If proposal is to deepen or plug back, give data on present productive zone and proposed new productive zone. If proposal is to drill or deepen directionally, give pertinent data on subsurface locations and measured and true vertical depths. Give blowout preventer program, if any.

24.

SIGNED

Thomas A. Dugan

TITLE

Petroleum Engineer

DATE

10-19-79

(This space for Federal or State office use)

PERMIT NO.

APPROVAL DATE

APPROVED BY

TITLE

DATE

CONDITIONS OF APPROVAL, IF ANY:

*See Instructions On Reverse Side

NEW MEXICO OIL CONSERVATION COMMISSION
WELL LOCATION AND ACREAGE DEDICATION PLAT

Form C-102
Supersedes C-128
Effective 1-1-65

All distances must be from the outer boundaries of the Section.

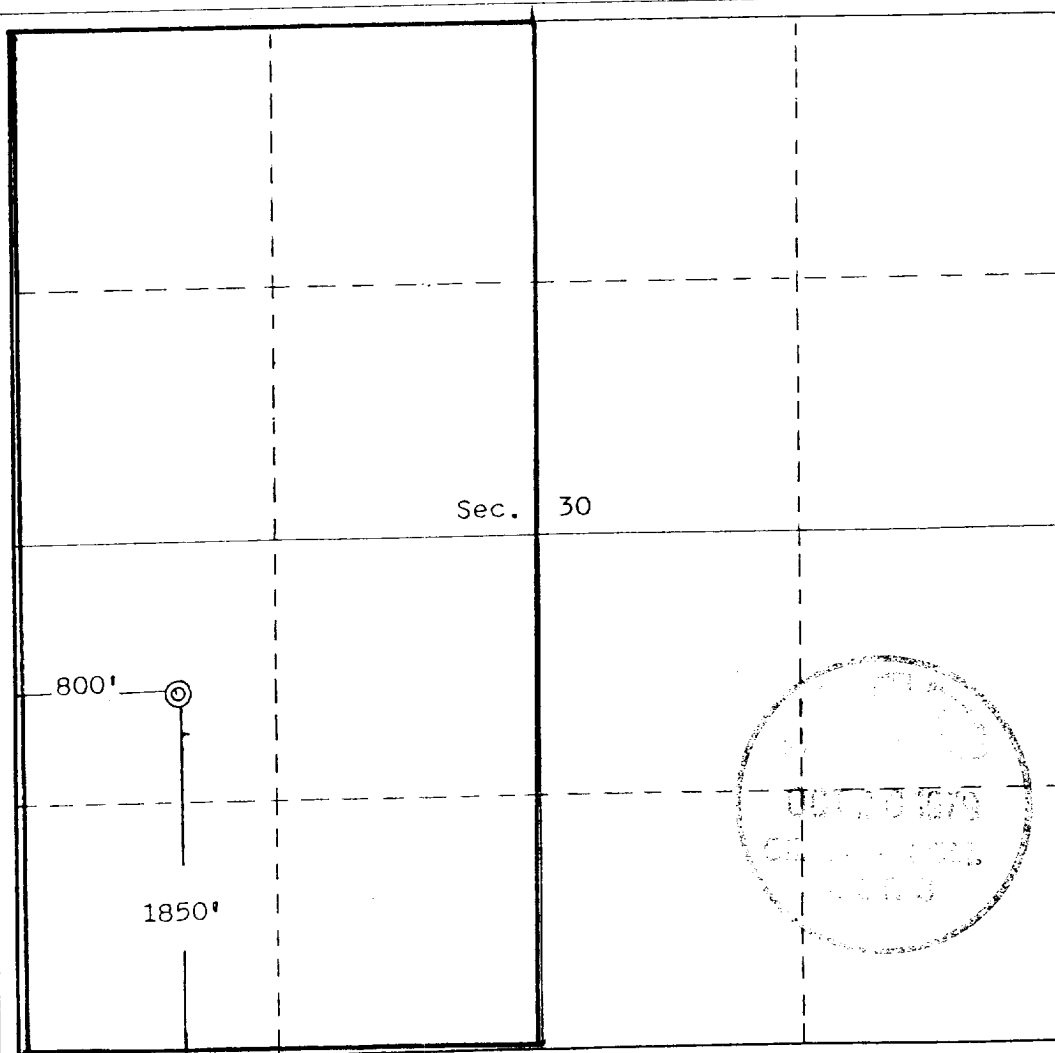
Operator Dugan Production Corporation			Lease April Surprise		Well No. #2
Unit Letter L	Section 30	Township 24 North	Range 9 West	County San Juan	
Actual Footage Location of Well: 1850 feet from the South line and 800 feet from the West line					
Ground Level Elev. 6975	Producing Formation Dakota	Pool Basin		Dedicated Acreage: 321.01 Acres	

1. Outline the acreage dedicated to the subject well by colored pencil or hachure marks on the plat below.
2. If more than one lease is dedicated to the well, outline each and identify the ownership thereof (both as to working interest and royalty).
3. If more than one lease of different ownership is dedicated to the well, have the interests of all owners been consolidated by communitization, unitization, force-pooling, etc?

☐ Yes ☒ No If answer is "yes," type of consolidation _____

If answer is "no," list the owners and tract descriptions which have actually been consolidated. (Use reverse side of this form if necessary.) _____

No allowable will be assigned to the well until all interests have been consolidated (by communitization, unitization, forced-pooling, or otherwise) or until a non-standard unit, eliminating such interests, has been approved by the Commission.



CERTIFICATION

I hereby certify that the information contained herein is true and complete to the best of my knowledge and belief.

Thomas A. Dugan
Name

Thomas A. Dugan

Position
Petroleum Engineer

Company
Dugan Production Corp.

Date
10-19-79

Edgar L. Risenhoover
I hereby certify that the well location shown on this plat was plotted from field notes of actual surveys made by me or under my supervision, and that the same is true and correct to the best of my knowledge and belief.

Date Surveyed
October 6, 1979

Registered Professional Engineer and/or Land Surveyor

Edgar L. Risenhoover
Certificate No. 5979

Edgar L. Risenhoover, L.S.