

UNITED STATES  
DEPARTMENT OF THE INTERIOR  
GEOLOGICAL SURVEY

## APPLICATION FOR PERMIT TO DRILL, DEEPEN, OR PLUG BACK

## 1a. TYPE OF WORK

DRILL ☒DEEPEN ☐PLUG BACK ☐

## b. TYPE OF WELL

OIL  
WELL ☐GAS  
WELL ☒

OTHER

SINGLE  
ZONE ☐MULTIPLE  
ZONE ☐

## 2. NAME OF OPERATOR

Dugan Production Corp.

## 3. ADDRESS OF OPERATOR

Box 208, Farmington, NM 87401

## 4. LOCATION OF WELL (Report location clearly and in accordance with any State requirements.)

At surface

1850' FSL - 790' FEL

At proposed prod. zone

## 14. DISTANCE IN MILES AND DIRECTION FROM NEAREST TOWN OR POST OFFICE\*

15-1/2 miles southeast of Chaco Plant

## 15. DISTANCE FROM PROPOSED\*

LOCATION TO NEAREST  
PROPERTY OR LEASE LINE, FT.  
(Also to nearest drlg. unit line, if any)

790'

## 16. NO. OF ACRES IN LEASE

320

## 17. NO. OF ACRES ASSIGNED

TO THIS WELL  
5/320

## 18. DISTANCE FROM PROPOSED LOCATION\*

TO NEAREST WELL, DRILLING, COMPLETED,  
OR APPLIED FOR, ON THIS LEASE, FT.

0'

## 19. PROPOSED DEPTH

6180'

## 20. ROTARY OR CABLE TOOLS

Rotary

## 21. ELEVATIONS (Show whether DF, RT, GR, etc.)

6891' GL

## 22. APPROX. DATE WORK WILL START\*

ASAP

## 23.

## PROPOSED CASING AND CEMENTING PROGRAM

SIZE OF HOLE	SIZE OF CASING	WEIGHT PER FOOT	SETTING DEPTH	QUANTITY OF CEMENT
12-1/4"	8-5/8"	24#	225'	125 sx circulated
7-7/8"	4-1/2"	10.5#	6180'	650 sx in two stages

Plan to drill with mud to test the Basin Dakota Formation. Plan to run IES log to TD. If productive, plan to set 4-1/2" casing, cement in two stages, selectively perforate, frac, clean out after frac, run 1-1/2" tbg and complete well.

Plan to use BOP furnished by rig while drilling (10" 3000 psi hydraulic)

Plan to use BOP rental while completing (6" 3000 psi double gate manual)

NMERB: Gas not dedicated.

IN ABOVE SPACE DESCRIBE PROPOSED PROGRAM: If proposal is to deepen or plug back, give data on present productive zone and proposed new productive zone. If proposal is to drill or deepen directionally, give pertinent data on subsurface locations and measured and true vertical depths. Give blowout preventer program, if any.

## 24.

SIGNED

Thomas A. Dugan

TITLE

President

DATE

5-19-80

(This space for Federal or State office use)

PERMIT NO.

APPROVAL DATE

APPROVED BY

TITLE

CONDITIONS OF APPROVAL, IF ANY:

\*GENERAL REQUIREMENTS

\*See Instructions On Reverse Side

NM000

## WELL LOCATION AND ACREAGE DEDICATION PLAT

Supersedes C-12  
Effective 1-1-65

All distances must be from the outer boundaries of the Section.

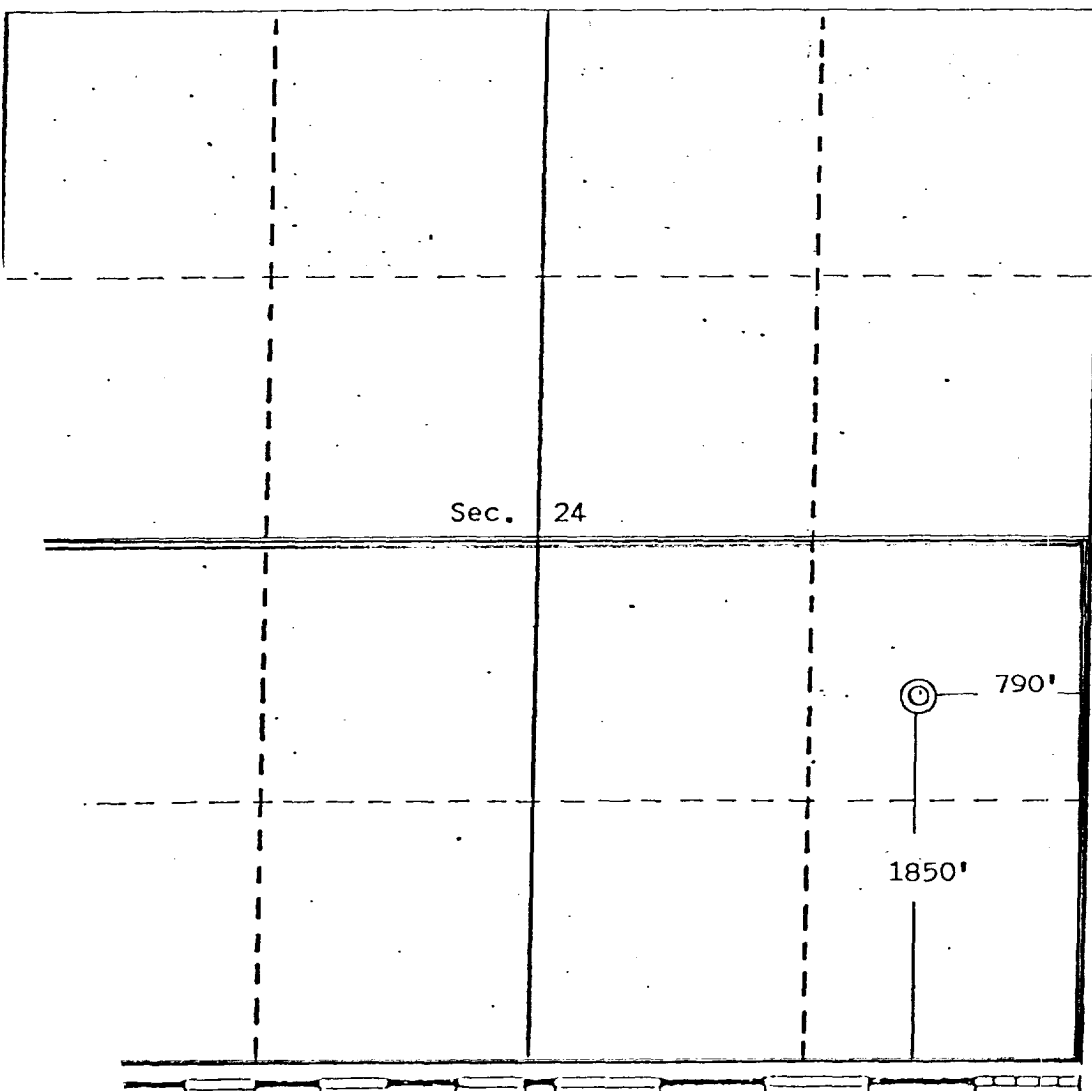
Operator Dugan Production Corporation			Lease Merry May			Well No. #1		
Unit Letter I	Section 24	Township 24 North	Range 10 West	County San Juan				
Actual Footage Location of Well:								
1850		feet from the South		line and		790		feet from the East
Ground Level Elev. 5891		Producing Formation Dakota		Pool Basin		Dedicated Acreage: 320		Acres

1. Outline the acreage dedicated to the subject well by colored pencil or hachure marks on the plat below.
2. If more than one lease is dedicated to the well, outline each and identify the ownership thereof (both as to working interest and royalty).
3. If more than one lease of different ownership is dedicated to the well, have the interests of all owners been consolidated by communitization, unitization, force-pooling, etc?

☐ Yes ☐ No If answer is "yes," type of consolidation \_\_\_\_\_

If answer is "no," list the owners and tract descriptions which have actually been consolidated. (Use reverse side of this form if necessary.) \_\_\_\_\_

No allowable will be assigned to the well until all interests have been consolidated (by communitization, unitization, forced-pooling, or otherwise) or until a non-standard unit, eliminating such interests, has been approved by the Commission.



## CERTIFICATION

I hereby certify that the information contained herein is true and complete to the best of my knowledge and belief.

Name

Thomas A. Dugan

Position

President

Company

Dugan Production Corp.

Date

5-19-80

I hereby certify that the well location shown on this plat was plotted from field notes of actual surveys made by me or under my supervision and that the same is true and correct to the best of my knowledge and belief.

Date Surveyed

April 11, 1980

Registered Professional Engineer  
and/or Land Surveyor

Edgar L. Risenhoover  
Certificate No. 5979