

UNITED STATES  
DEPARTMENT OF THE INTERIOR  
GEOLOGICAL SURVEY

APPLICATION FOR PERMIT TO DRILL, DEEPEN, OR PLUG BACK

1a. TYPE OF WORK

DRILL ☒

DEEPEN ☐

PLUG BACK ☐

b. TYPE OF WELL

OIL  
WELL ☒

GAS  
WELL ☐

OTHER

SINGLE  
ZONE ☒

MULTIPLE  
ZONE ☐

2. NAME OF OPERATOR

Tennessee Oil Company *Colman Oil and Gas Inc.*

3. ADDRESS OF OPERATOR

*101-2 Pet. Blk. 8, S. 24N. 10E. 80155*  
P.O. Box 2249, Englewood, Colorado

4. LOCATION OF WELL (Report location clearly and in accordance with any State requirements.)

At surface

830 FNL, 1650 FWL

At proposed prod. zone

same as above

14. DISTANCE IN MILES AND DIRECTION FROM NEAREST TOWN OR POST OFFICE\*

Approximately 10 miles SE of Carson Trading Post.

15. DISTANCE FROM PROPOSED\*

LOCATION TO NEAREST  
PROPERTY OR LEASE LINE, FT.  
(Also to nearest drlg. unit line, if any)

830

16. NO. OF ACRES IN LEASE

160

17. NO. OF ACRES ASSIGNED  
TO THIS WELL

160

18. DISTANCE FROM PROPOSED LOCATION\*  
TO NEAREST WELL, DRILLING, COMPLETED,  
OR APPLIED FOR, ON THIS LEASE, FT.

19. PROPOSED DEPTH

±5365

20. ROTARY OR CABLE TOOLS

Rotary

21. ELEVATIONS (Show whether DF, RT, GR, etc.)

6836 GR

22. APPROX. DATE WORK WILL START\*

23.

PROPOSED CASING AND CEMENTING PROGRAM

SIZE OF HOLE	SIZE OF CASING	WEIGHT PER FOOT	SETTING DEPTH	QUANTITY OF CEMENT
12 1/4"	9 5/8" new	36#	±300	Circulate to surface
7 7/8"	4 1/2" new	11.6#, 10.5#	±5365	Cement in two stages

This section is subject to administrative  
appeal pursuant to 30 CFR 290.

See attached.

The gas is dedicated.

DEC 10 1980



IN ABOVE SPACE DESCRIBE PROPOSED PROGRAM: If proposal is to deepen or plug back, give data on present productive zone and proposed new productive zone. If proposal is to drill or deepen directionally, give pertinent data on subsurface locations and measured and true vertical depths. Give blowout preventer program, if any.

24. SIGNED *R. A. Mishler* R. A. Mishler TITLE Sr. Production Analyst DATE December 10, 1980

(This space for Federal or State office use)

PERMIT NO. AS AMENDED

APPROVAL DATE

APPROVED BY JAN 16 1981  
CONDITIONS OF APPROVAL, IF ANY  
JAMES F. SIMS  
DISTRICT ENGINEER

TITLE

DATE

\*See Instructions On Reverse Side

*ok 3m*

UNITED STATES  
DEPARTMENT OF THE INTERIOR  
GEOLOGICAL SURVEY

## SUNDRY NOTICES AND REPORTS ON WELLS

(Do not use this form for proposals to drill or to deepen or plug back to a different reservoir. Use Form 9-331-C for such proposals.)

1. oil well ☒ gas well ☒ other2. NAME OF OPERATOR  
COLEMAN OIL & GAS, INC.3. ADDRESS OF OPERATOR  
101-2 Petroleum Plaza Bldg., Farmington, N.M.4. LOCATION OF WELL (REPORT LOCATION CLEARLY. See space 17 below.)  
AT SURFACE: 830' FNL, 1650' FWL  
AT TOP PROD. INTERVAL:  
AT TOTAL DEPTH:

16. CHECK APPROPRIATE BOX TO INDICATE NATURE OF NOTICE, REPORT, OR OTHER DATA

## REQUEST FOR APPROVAL TO:

TEST WATER SHUT-OFF ☐  
FRACTURE TREAT ☐  
SHOOT OR ACIDIZE ☐  
REPAIR WELL ☐  
PULL OR ALTER CASING ☐  
MULTIPLE COMPLETE ☐  
CHANGE ZONES ☐  
ABANDON\* ☐

(other) Numbered Below

## SUBSEQUENT REPORT OF:

RECEIVED

JAN 14 1981

U. S. GEOLOGICAL SURVEY  
FARMINGTON, N. M.

(NOTE: Report results of multiple completions or zone change on Form 9-330.)

JAN 21 1981  
OIL COM. COM.  
DIST. 3

17. DESCRIBE PROPOSED OR COMPLETED OPERATIONS (Clearly state all pertinent details and give pertinent dates, including estimated date of starting any proposed work. If well is directionally drilled, give subsurface locations and measured and true vertical depths for all markers and zones pertinent to this work.)\*

1. Change name from Tenneco Oil Co. to Coleman Oil & Gas, Inc.
2. Surface casing to 200' of 8 5/8", 24# cement circulated to surface.
3. Type of well from oil to oil and gas.
4. Locate D.V. Tool 100' below Point Lookout at approximately 4250' and circulate to surface. First stage sufficient volume to cover the Gallup.

Subsurface Safety Valve: Manu. and Type

Set @ \_\_\_\_\_ Ft.

18. I hereby certify that the foregoing is true and correct

COLEMAN OIL &amp; GAS, INC.

SIGNED W. M. Gallaway, Engineer TITLE Operator DATE Jan. 14, 1981

(This space for Federal or State office use)

APPROVED BY \_\_\_\_\_  
CONDITIONS OF APPROVAL, IF ANY:

TITLE \_\_\_\_\_ DATE \_\_\_\_\_

ACCEPTED FOR RECORD

JAN 20 1981

\*See Instructions on Reverse Side

FARMINGTON DISTRICT

BY W. M. Gallaway

All distances must be from the outer boundaries of the Section.

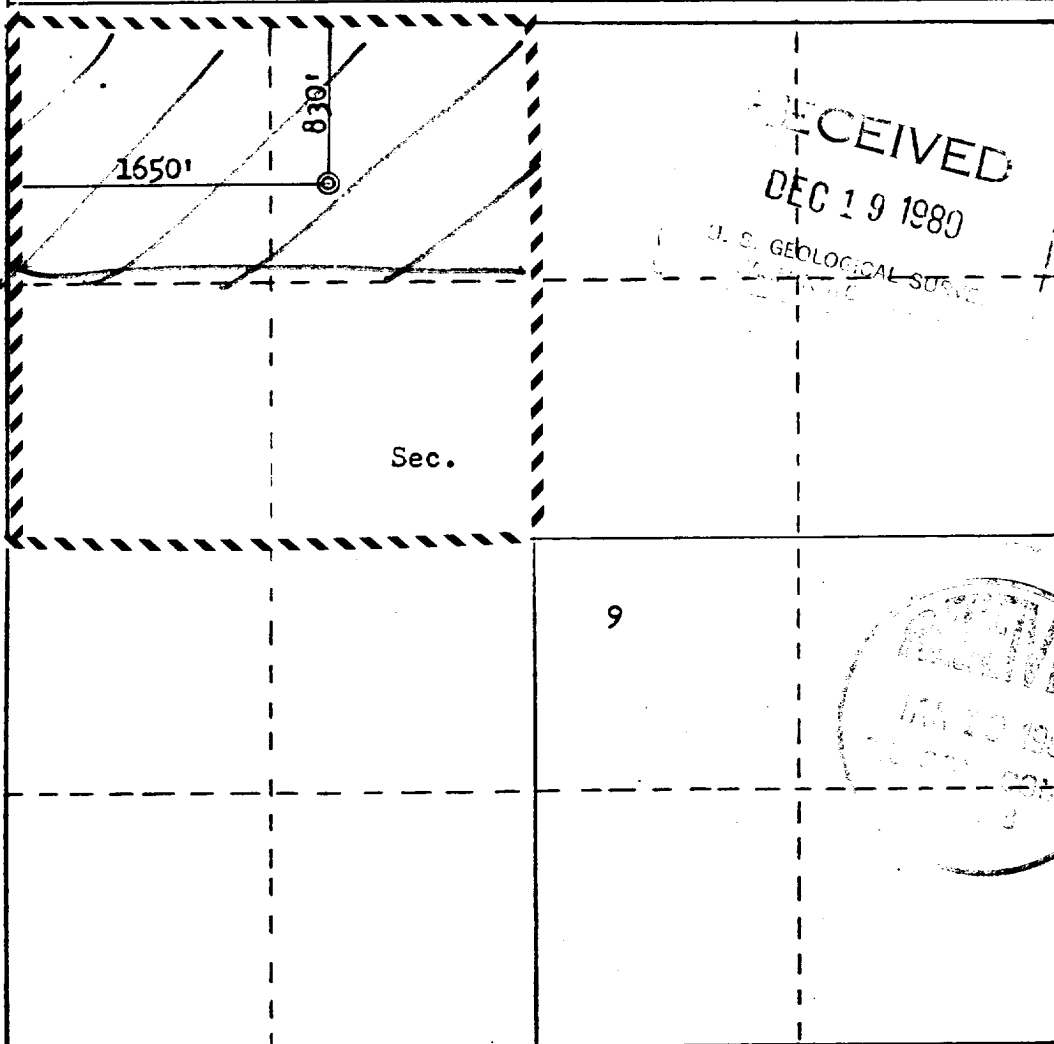
Operator <b>TENNECO OIL COMPANY</b>			Lease <b>NAVAJO-WOOD</b>		Well No. <b>2</b>
Unit Letter <b>C</b>	Section <b>9</b>	Township <b>24N</b>	Range <b>10W</b>	County <b>San Juan</b>	
Actual Footage Location of Well:					
<b>830</b> feet from the <b>North</b> line and		<b>1650</b> feet from the <b>West</b> line			
Ground Level Elev. <b>6836</b>	Producing Formation <b>GALLUP</b>	Pool <b>BISTI</b>	Dedicated Acreage: <b>80 160</b> Acres		

1. Outline the acreage dedicated to the subject well by colored pencil or hachure marks on the plat below.
2. If more than one lease is dedicated to the well, outline each and identify the ownership thereof (both as to working interest and royalty).
3. If more than one lease of different ownership is dedicated to the well, have the interests of all owners been consolidated by communitization, unitization, force-pooling, etc?

☐ Yes ☐ No If answer is "yes," type of consolidation \_\_\_\_\_

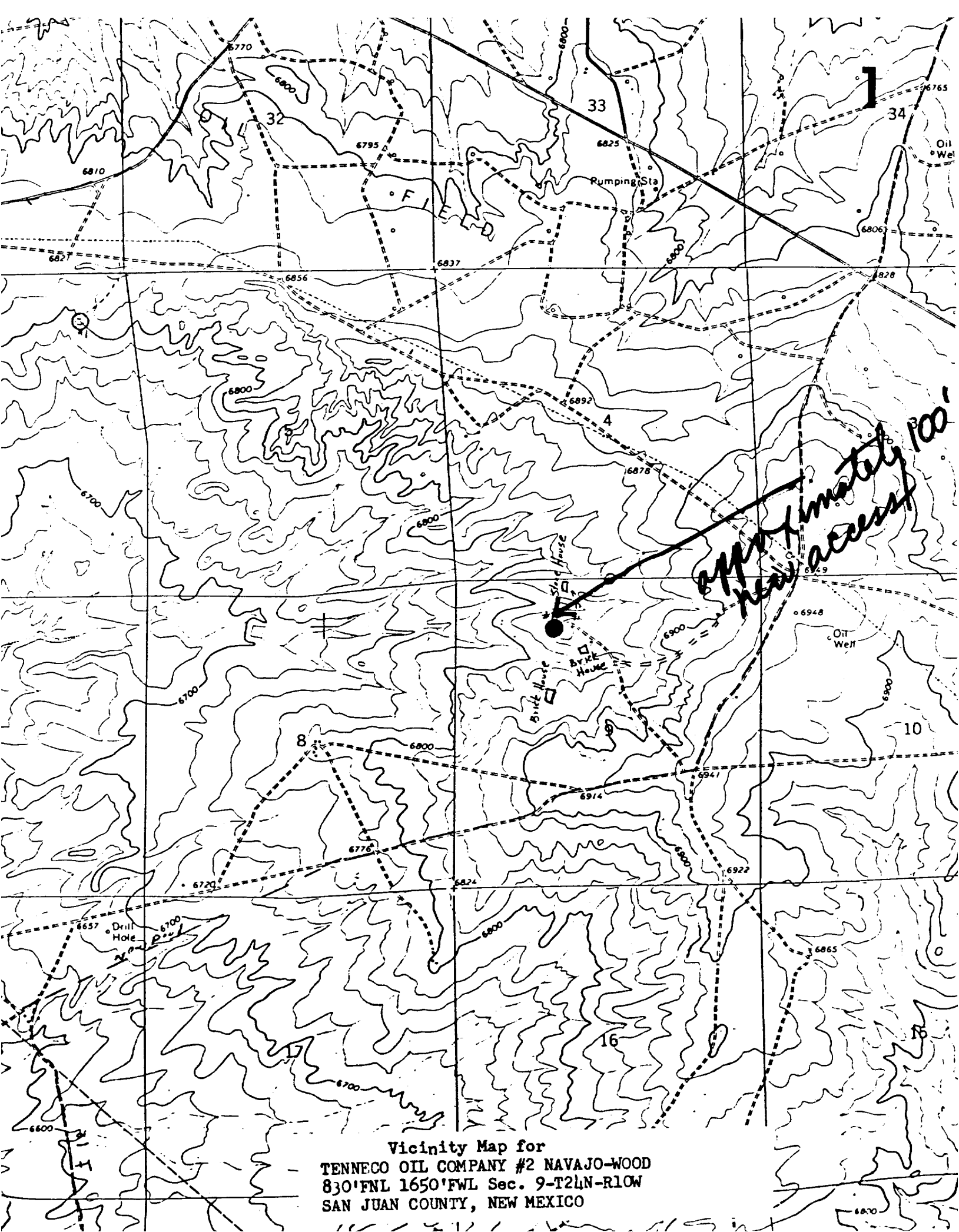
If answer is "no," list the owners and tract descriptions which have actually been consolidated. (Use reverse side of this form if necessary.) \_\_\_\_\_

No allowable will be assigned to the well until all interests have been consolidated (by communitization, unitization, forced-pooling, or otherwise) or until a non-standard unit, eliminating such interests, has been approved by the Commission.



Scale: 1"=1000'

<b>CERTIFICATION</b>	
I hereby certify that the information contained herein is true and complete to the best of my knowledge and belief.	
Name	<b>R. A. Mishler</b>
Position	<b>Sr. Production Analyst</b>
Company	<b>Tenneco Oil Company</b>
Date	<b>December 10, 1980</b>
I hereby certify that the well location shown on this plat was plotted from field notes of actual surveys made by me or under my supervision, and that the same is true and correct to the best of my knowledge and belief.	
Date Surveyed	<b>October 1, 1980</b>
Registered Professional Engineer and Land Surveyor <b>Fred B. Kerr, Jr.</b>	
Certificate No.	<b>3950</b>



Vicinity Map for  
TENNECO OIL COMPANY #2 NAVAJO-WOOD  
830'FNL 1650'FWL Sec. 9-T24N-R10W  
SAN JUAN COUNTY, NEW MEXICO