

UNITED STATES  
DEPARTMENT OF THE INTERIOR  
GEOLOGICAL SURVEY

## APPLICATION FOR PERMIT TO DRILL, DEEPEN, OR PLUG BACK

## 1a. TYPE OF WORK

DRILL ☒DEEPEN ☐PLUG BACK ☐

## b. TYPE OF WELL

OIL  
WELL ☒GAS  
WELL ☐

OTHER

SINGLE  
ZONE ☒MULTIPLE  
ZONE ☐

## 2. NAME OF OPERATOR

Dugan Production Corp.

## 3. ADDRESS OF OPERATOR

P O Box 208, Farmington, NM 87401

## 4. LOCATION OF WELL (Report location clearly and in accordance with any State requirements.)\*

At surface

790' FSL - 790' FWL

At proposed prod. zone

## 14. DISTANCE IN MILES AND DIRECTION FROM NEAREST TOWN OR POST OFFICE\*

4 miles east of Nagezzi, NM

## 16. DISTANCE FROM PROPOSED\*

LOCATION TO NEAREST  
PROPERTY OR LEASE LINE, FT.  
(Also to nearest drlg. unit line, if any)

790'

## 16. NO. OF ACRES IN LEASE

160

17. NO. OF ACRES ASSIGNED  
TO THIS WELL

40

18. DISTANCE FROM PROPOSED LOCATION\*  
TO NEAREST WELL, DRILLING, COMPLETED,  
OR APPLIED FOR, ON THIS LEASE, FT.

## 19. PROPOSED DEPTH

5150'

## 20. ROTARY OR CABLE TOOLS

Rotary

## 21. ELEVATIONS (Show whether DF, RT, GR, etc.)

6684'

DRILLING DEPTH AND ELEVATIONS ARE  
SUBJECT TO CORRECTION IF ANY ATTACHED  
"GENERAL REQUIREMENTS"

## 22. APPROX. DATE WORK WILL START\*

ASAP

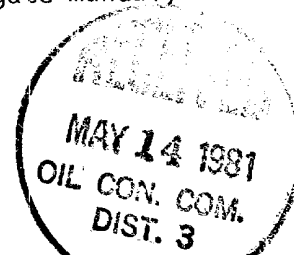
## 23. PROPOSED CASING AND CEMENTING PROGRAM

This action is subject to administrative  
appeal pursuant to 30 CFR 250.  
QUANTITY OF CEMENT

SIZE OF HOLE	SIZE OF CASING	WEIGHT PER FOOT	SETTING DEPTH	QUANTITY OF CEMENT
12-1/4"	8-5/8"	24#	200'	135 sx
7-7/8"	4-1/2"	10.5#	5150'	1600 cu.ft. slurry

Plan to drill 4 1/2" hole to test Gallup formation. Plan to run IES log to TD.  
If productive, will set 4 1/2" csg., cement in two stages, selectively perf, frac,  
clean out after frac, run 1 1/2" tubing, and complete well.

Plan to use B.O.P. furnished by rig (10" 3000 psi hydraulic).  
Plan to use B.O.P. rental while completing (6" 3000 psi double gate manual).



IN ABOVE SPACE DESCRIBE PROPOSED PROGRAM: If proposal is to deepen or plug back, give data on present productive zone and proposed new productive zone. If proposal is to drill or deepen directionally, give pertinent data on subsurface locations and measured and true vertical depths. Give blowout preventer program, if any.

24. SIGNED Jerome P. McHugh Jr. TITLE Landman DATE 4-3-81

(This space for Federal or State office use)

PERMIT NO. \_\_\_\_\_

APPROVAL DATE \_\_\_\_\_

APPROVED BY \_\_\_\_\_

TITLE \_\_\_\_\_

CONDITIONS OF APPROVAL, IF ANY:

APPROVED  
AS AMENDED  
DATE \_\_\_\_\_

MAY 13 1981

FOR JAMES F. SIMS  
DISTRICT ENGINEER

\*See Instructions On Reverse Side

N11000

## OIL CONSERVATION DIVISION

P. O. BOX 2088

Form C-102  
Revised 10-1-78STATE OF NEW MEXICO  
ENERGY AND MINERALS DEPARTMENT

SANTA FE, NEW MEXICO 87501

All distances must be from the outer boundaries of the Section.

Operator Dugan Production Corporation		Lease Kaibab Trail		Well No. 1
Section M	Section 20	Township 24 North	Range 8 West	County San Juan
Actual Footage Location of Well: 790 feet from the South line and 790 feet from the West line				
Ground Level Elev. 5684	Producing Formation Gallup	Pool Undesignated Gallup	Dedicated Acreage: 40 Acres	

1. Outline the acreage dedicated to the subject well by colored pencil or hachure marks on the plat below.

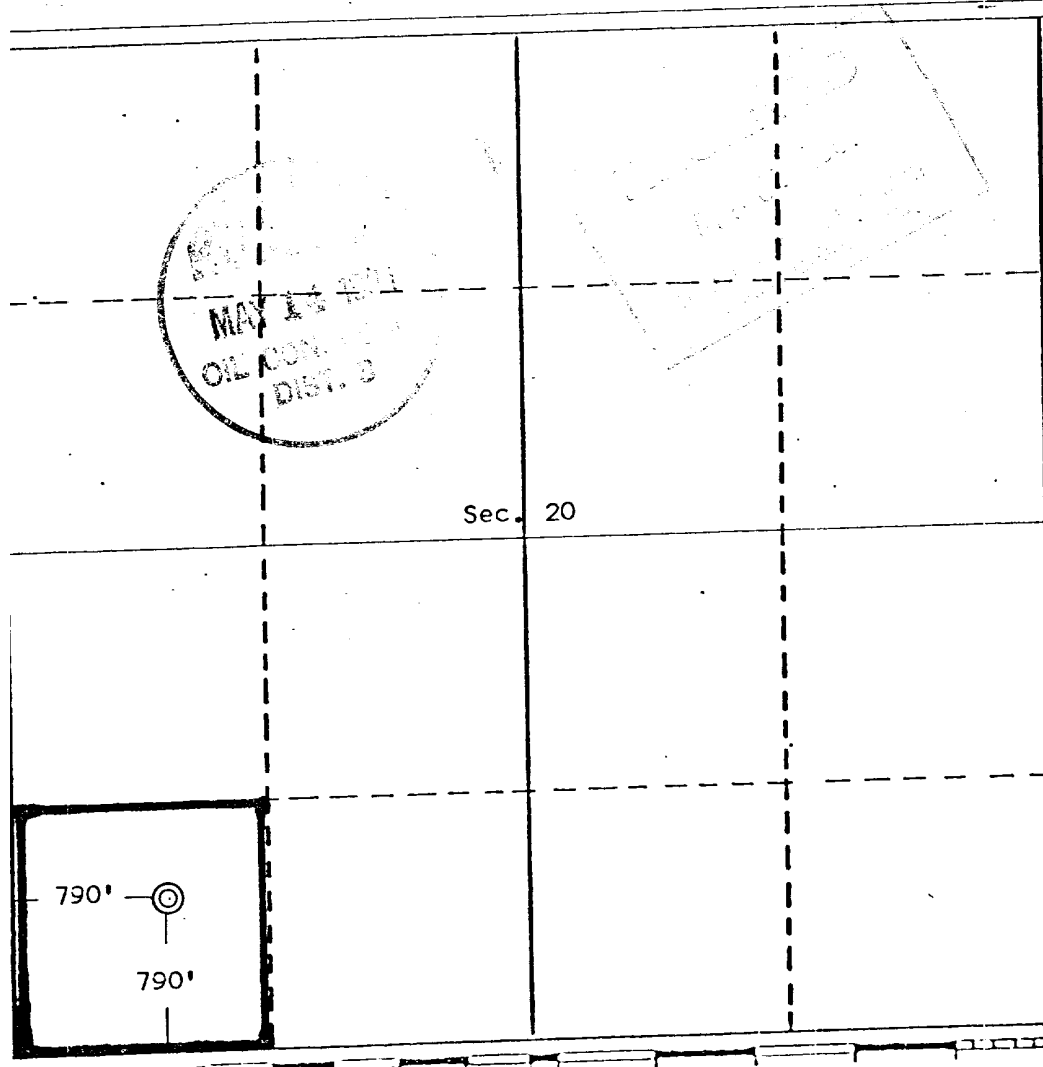
2. If more than one lease is dedicated to the well, outline each and identify the ownership thereof (both as to working interest and royalty).

3. If more than one lease of different ownership is dedicated to the well, have the interests of all owners been consolidated by communitization, unitization, force-pooling, etc?

☐ Yes ☐ No If answer is "yes," type of consolidation \_\_\_\_\_

If answer is "no," list the owners and tract descriptions which have actually been consolidated. (Use reverse side of this form if necessary.) \_\_\_\_\_

No allowable will be assigned to the well until all interests have been consolidated (by communitization, unitization, forced-pooling, or otherwise) or until a non-standard unit, eliminating such interests, has been approved by the Division.



## CERTIFICATION

I hereby certify that the information contained herein is true and complete to the best of my knowledge and belief.

Name

Jerome P. McHugh Jr.

Position

Landman

Company

Dugan Production Corp.

Date

4-3-81

I hereby certify that the location shown is correct as determined from field notes of a recent survey conducted by me or under my supervision and that the same is true and correct to the best of my knowledge and belief.

Date Surveyed

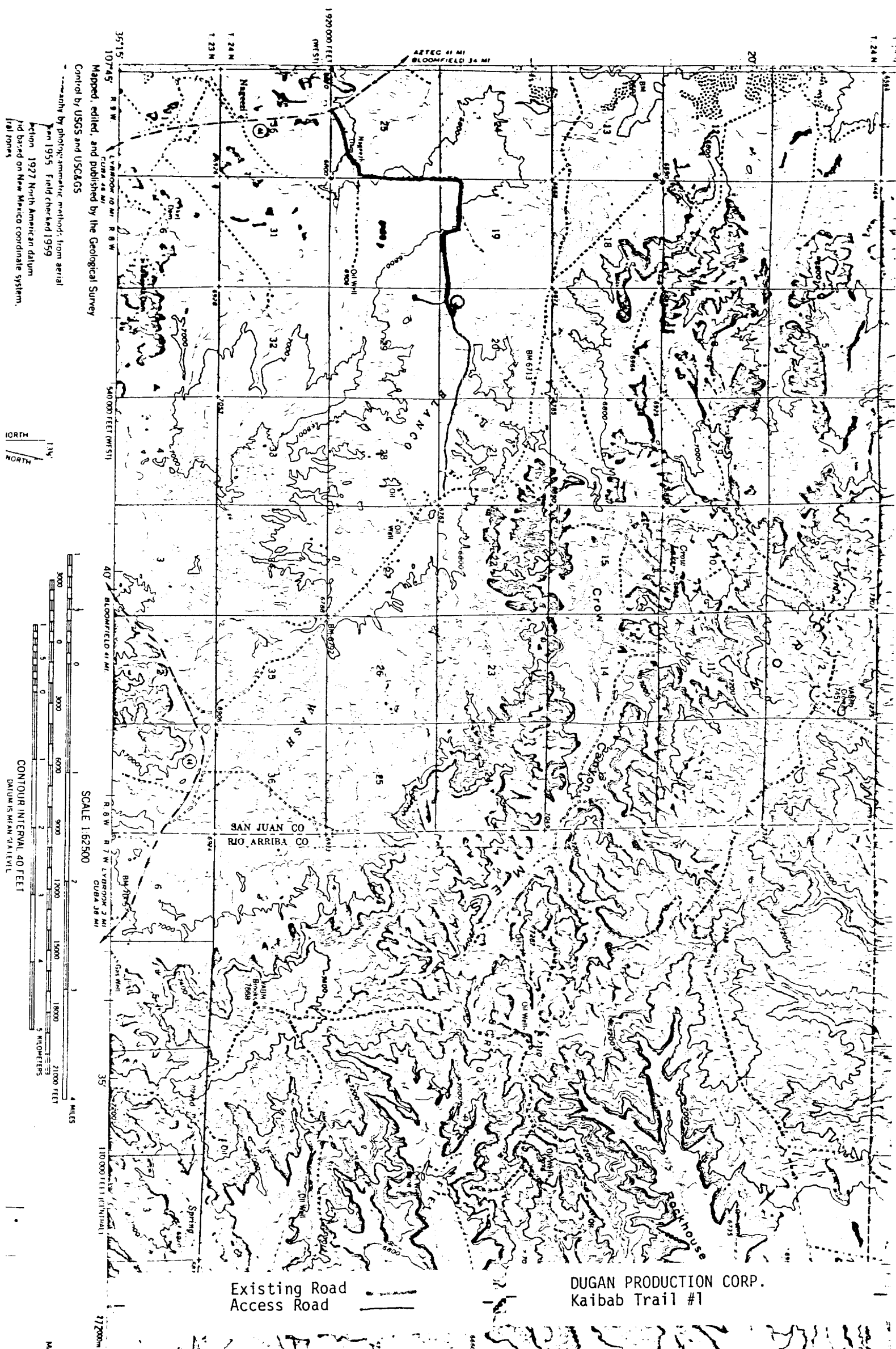
March 19, 1981

Registered Professional Engineer  
and/or Land Surveyor

Edgar L. Risenhoover

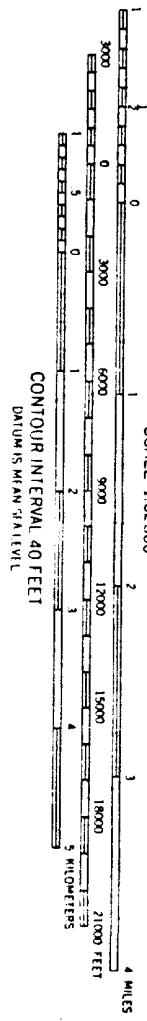
Certificate No. 5979

Edgar L. Risenhoover, L.S.



Control by USGS and USC&GS  
Mapped, edited, and published by the Geological Survey  
by photogrammetric methods from aerial  
photos 1955. Field checked 1959  
Section 1927 North American datum  
and based on New Mexico coordinate system.  
Initials

134'  
NORTH  
NORTH



Existing Road  
Access Road

DUGAN PRODUCTION CORP.  
Kaibab Trail #1