

UNITED STATES
DEPARTMENT OF THE INTERIOR
GEOLOGICAL SURVEY

APPLICATION FOR PERMIT TO DRILL, DEEPEN, OR PLUG BACK

1a. TYPE OF WORK

DRILL ☒DEEPEN ☐PLUG BACK ☐

b. TYPE OF WELL

OIL
WELL ☐GAS
WELL ☒

OTHER

SINGLE
ZONE ☒MULTIPLE
ZONE ☐

2. NAME OF OPERATOR

Dugan Production Corp.

3. ADDRESS OF OPERATOR

P O Box 208, Farmington, NM 87401

4. LOCATION OF WELL (Report location clearly and in accordance with any State requirements.)

At surface

1850' FNL - 790' FEL

At proposed prod. zone

14. DISTANCE IN MILES AND DIRECTION FROM NEAREST TOWN OR POST OFFICE*

13 miles NW of Nageezi, NM

15. DISTANCE FROM PROPOSED*

LOCATION TO NEAREST
PROPERTY OR LEASE LINE, FT.
(Also to nearest drlg. unit line, if any)

790'

16. NO. OF ACRES IN LEASE

400

18. DISTANCE FROM PROPOSED LOCATION*
TO NEAREST WELL, DRILLING, COMPLETED,
OR APPLIED FOR, ON THIS LEASE, FT.

1580'

19. PROPOSED DEPTH

1600'

17. NO. OF ACRES ASSIGNED
TO THIS WELL

160

20. ROTARY OR CABLE TOOLS

Rotary

21. ELEVATIONS (Show whether DF, RT, GR, etc.)

6510' GL

DRILLING OPERATIONS AUTHORIZED ARE
SUBJECT TO COMPLIANCE WITH ATTACHED

22. APPROX. DATE WORK WILL START*

July 31, 1981

23. GENERAL REQUIREMENTS

SIZE OF HOLE	SIZE OF CASING	WEIGHT PER FOOT	SETTING DEPTH	QUANTITY OF CEMENT
7-7/8"	5-1/2"	14#	90'	30 sx, circ. to surface
4-3/4"	2-7/8"	6.5#	1600'	160 sx

This action is subject to administrative
appeal pursuant to 30 CFR 290.

Plan to drill with as little mud as possible, using slim hole technique to test P.C.
and upper Chacra formations.

If productive, plan to set 2-7/8" csg. thru formation, selectively perforate, frac, clean
out after frac, and run tbq.

Gas not dedicated.



IN ABOVE SPACE DESCRIBE PROPOSED PROGRAM: If proposal is to deepen or plug back, give data on present productive zone and proposed new productive zone. If proposal is to drill or deepen directionally, give pertinent data on subsurface locations and measured and true vertical depths. Give blowout preventer program, if any.

24.

SIGNED

Jerome P. McHugh Jr.

TITLE

Landman

DATE 7-8-81

(This space for Federal or State office use)

PERMIT NO.

APPROVAL DATE

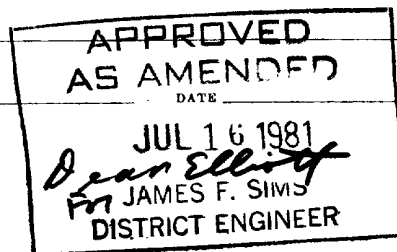
APPROVED BY

TITLE

CONDITIONS OF APPROVAL, IF ANY:

*See Instructions On Reverse Side

NMOCC



All distances must be from the outer boundaries of the Section.

Operator Dugan Production Corporation		Lease Mean Betty Jean		Well No. 1
Unit Letter H	Section 14	Township 24 North	Range 11 West	County San Juan
Actual Footage Location of Well: 1850 feet from the North line and 790 feet from the East line				
Ground Level Elev. 6510	Producing Formation Chacra	Pool Chacra Wildcat	Dedicated Acreage: 160 Acres	

1. Outline the acreage dedicated to the subject well by colored pencil or hatchure marks on the plat below.
2. If more than one lease is dedicated to the well, outline each and identify the ownership thereof (both as to working interest and royalty).
3. If more than one lease of different ownership is dedicated to the well, have the interests of all owners been consolidated by communitization, unitization, force-pooling, etc?

☒ Yes ☐ No If answer is "yes," type of consolidation communitization

If answer is "no," list the owners and tract descriptions which have actually been consolidated. (Use reverse side of this form if necessary.)

No allowable will be assigned to the well until all interests have been consolidated (by communitization, unitization, forced-pooling, or otherwise) or until a non-standard unit, eliminating such interests, has been approved by the Division.

<div data-bbox="185 987 558 1200" data-label="Text"> <p>RECEIVED JUL 9 1981 U. S. GEOLOGICAL SURVEY FARMINGTON, N. M.</p> </div>	<div data-bbox="558 929 1071 1178" data-label="Text"> <p>NM 17192 Tenneco Oil Co. 1850'</p> </div>
	<div data-bbox="558 1178 1071 1434" data-label="Text"> <p>NM14100 Dugan Production Corp. 790'</p> </div>
<div data-bbox="477 1404 607 1434" data-label="Text"> <p>Sec. 14</p> </div>	
<div data-bbox="672 1540 964 1838" data-label="Text"> <p>RECEIVED JUL 20 1981 OIL CON. COM. DIST. 3</p> </div>	

CERTIFICATION

I hereby certify that the information contained herein is true and complete to the best of my knowledge and belief.

Jerome P. McHugh Jr.
Name
Jerome P. McHugh Jr.

Position
Landman

Company
Dugan Production Corp.

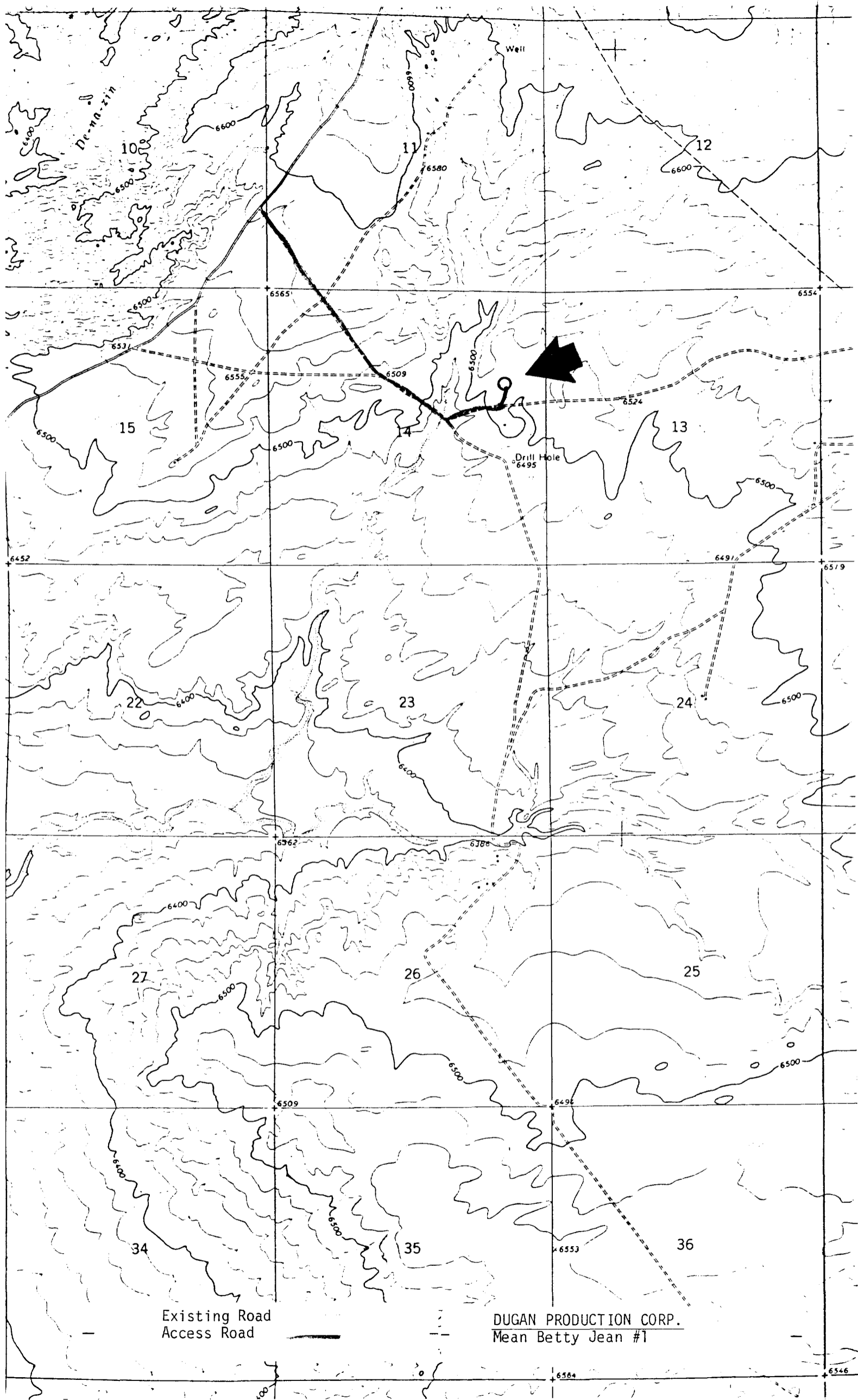
Date
7-8-81

Edgar L. Risenhoover
I hereby certify that the location shown on the plat was made by me or under my supervision, and that the same is true and correct to the best of my knowledge.

Date Surveyed
July 7, 1981

Registered Professional Engineer and/or Land Surveyor

Edgar L. Risenhoover
Certificate No. 5979
Edgar L. Risenhoover, L.S.



Existing Road
Access Road

DUGAN PRODUCTION CORP.
Mean Betty Jean #1