

UNITED STATES  
DEPARTMENT OF THE INTERIOR  
GEOLOGICAL SURVEY

## APPLICATION FOR PERMIT TO DRILL, DEEPEN, OR PLUG BACK

1a. TYPE OF WORK

DRILL ☒DEEPEN ☐PLUG BACK ☐

b. TYPE OF WELL

OIL  
WELL ☐GAS  
WELL ☒

OTHER

SINGLE  
ZONE ☒MULTIPLE  
ZONE ☐

2. NAME OF OPERATOR

Dugan Production Corp.

3. ADDRESS OF OPERATOR

P O Box 208, Farmington, NM 87401

4. LOCATION OF WELL (Report location clearly and in accordance with any State requirements.)\*

At surface

790' FNL - 790' FWL

At proposed prod. zone

14. DISTANCE IN MILES AND DIRECTION FROM NEAREST TOWN OR POST OFFICE\*

6 miles SW of Blanco Trading Post, NM

15. DISTANCE FROM PROPOSED\*

LOCATION TO NEAREST  
PROPERTY OR LEASE LINE, FT.  
(Also to nearest drlg. unit line, if any)

790'

16. NO. OF ACRES IN LEASE

960

17. NO. OF ACRES ASSIGNED  
TO THIS WELL

N/320

18. DISTANCE FROM PROPOSED LOCATION\*  
TO NEAREST WELL, DRILLING, COMPLETED,  
OR APPLIED FOR, ON THIS LEASE, FT.

1 mile

19. PROPOSED DEPTH

6410'

20. ROTARY OR CABLE TOOLS

Rotary

21. ELEVATIONS (Show whether DF, RT, GR, etc.)

7028' GL

22. APPROX. DATE WORK WILL START\*

ASAP

23.

## PROPOSED CASING AND CEMENTING PROGRAM

SIZE OF HOLE	SIZE OF CASING	WEIGHT PER FOOT	SETTING DEPTH	QUANTITY OF CEMENT
12-1/4"	8-5/8"	24#	225'	125 sx
7-7/8"	4-1/2"	10.5#	6410'	925 sx

Plan to drill with mud to test the Basin Dakota Formation. Plan to run logs to TD. If productive, plan to set 4 1/2" casing, cement in two stages, selectively perforate, frac, clean out after frac, run 2-3/8" tubing and complete well.

DRILLING OPERATIONS AUTHORIZED ARE  
SUBJECT TO COMPLIANCE WITH ATTACHED  
"GENERAL REQUIREMENTS"

GAS NOT DEDICATED

This action is subject to administrative  
appeal pursuant to 30 CFR 290.

IN ABOVE SPACE DESCRIBE PROPOSED PROGRAM: If proposal is to deepen or plug back, give data on present productive zone and proposed new productive zone. If proposal is to drill or deepen directionally, give pertinent data on subsurface locations and measured and true vertical depths. Give blowout preventer program, if any.

24.

SIGNED

*Jerome P. McHugh Jr.*  
Jerome P. McHugh Jr.

Landman

DATE

5-7-81

PERMIT NO.

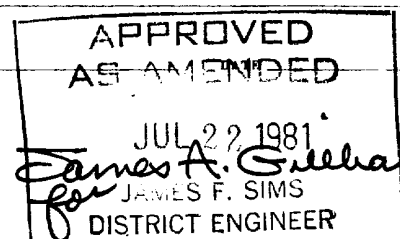
APPROVAL DATE

APPROVED BY

TITLE

CONDITIONS OF APPROVAL, IF ANY:

NMDCG



\*See Instructions On Reverse Side



STATE OF NEW MEXICO  
ENERGY AND MINERALS DEPARTMENT

SANTA FE, NEW MEXICO 87501

Form C-102  
Revised 10-1-78

All distances must be from the outer boundaries of the Section.

All distances must be from the outer boundaries of the Section.									
Operator Dugan Production Corporation				Lease July Jubilee				Well No. 2	
Unit Letter D		Section 29		Township 24 North		Range 9 West		County San Juan	
Actual Footage Location of Well:									
790		feet from the		North		line and		790 feet from the West line	
Ground Level Elev. 7028		Producing Formation Dakota			Pool Basin Dakota			Dedicated Acreage: 320 Acres	

1. Outline the acreage dedicated to the subject well by colored pencil or hatchure marks on the plat below.
2. If more than one lease is dedicated to the well, outline each and identify the ownership thereof (both as to working interest and royalty).
3. If more than one lease of different ownership is dedicated to the well, have the interests of all owners been consolidated by communitization, unitization, force-pooling, etc?

☐ Yes    ☐ No    If answer is "yes," type of consolidation

If answer is "no," list the owners and tract descriptions which have actually been consolidated. (Use reverse side of this form if necessary.) \_\_\_\_\_

No allowable will be assigned to the well until all interests have been consolidated (by communitization, unitization, forced-pooling, or otherwise) or until a non-standard unit, eliminating such interests, has been approved by the Division.

790'

790'—○

Sec. 20

**RECEIVED**  
 JUL 29 1981  
 OIL CON. COM.  
 DIST. 3

### CERTIFICATION

I hereby certify that the information contained herein is true and complete to the best of my knowledge and belief.

Name \_\_\_\_\_

Jerome P. McHugh Jr?

Position

Landman

Company

Dugan Production Corp.

Date \_\_\_\_\_

5-7-81

I hereby certify that the location shown on this plot was plotted from field notes of actual surveys made by me or under my supervision, and that the same is true and correct to the best of my knowledge and belief.

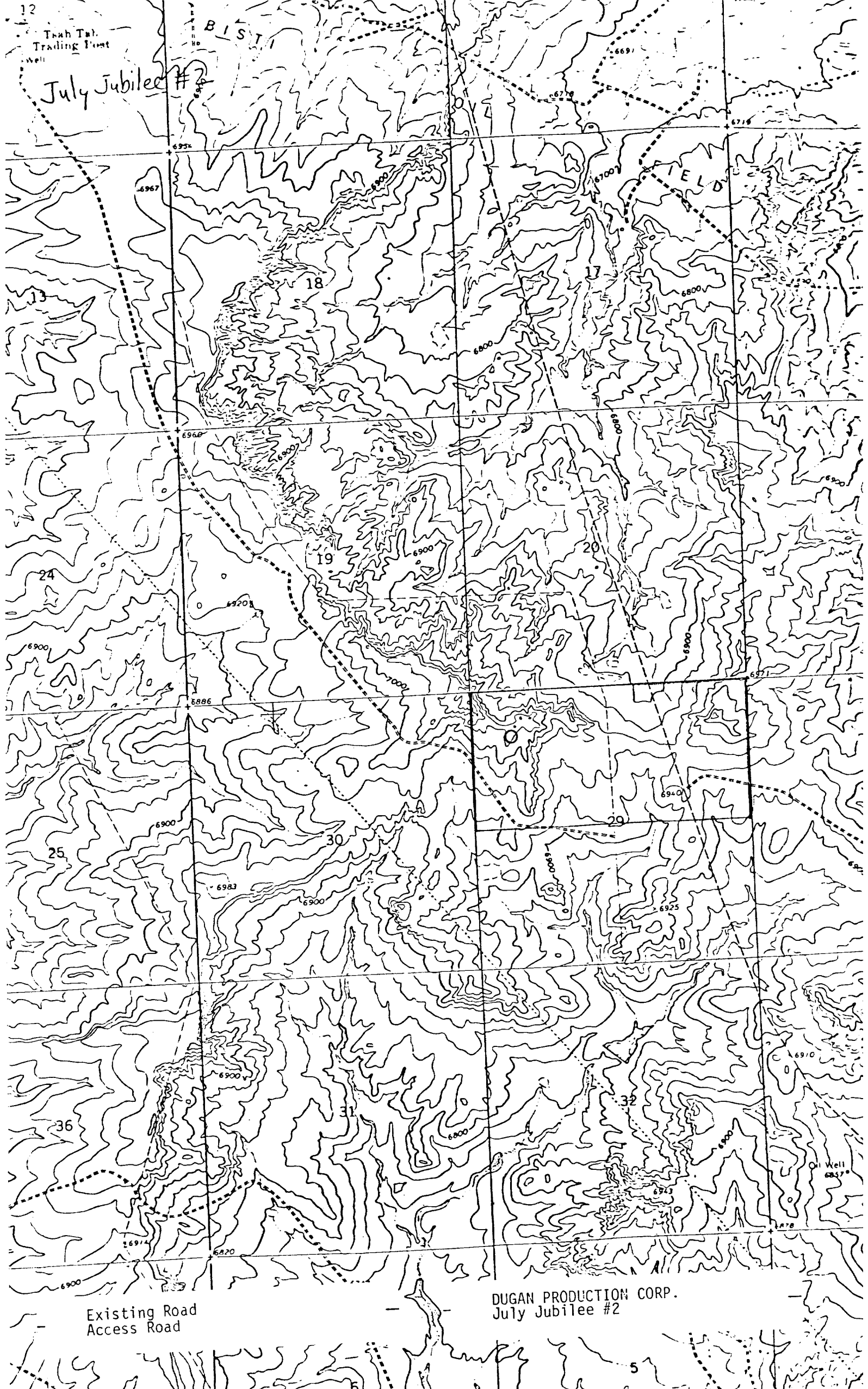
Date Surveyed \_\_\_\_\_

April 16, 1981

Registered Professional Engineer  
and/or Land Surveyor

Certificate No. 5979

Discobcover 1 S



12  
Toah Tah  
Trading Post  
Well

July Jubilee #2

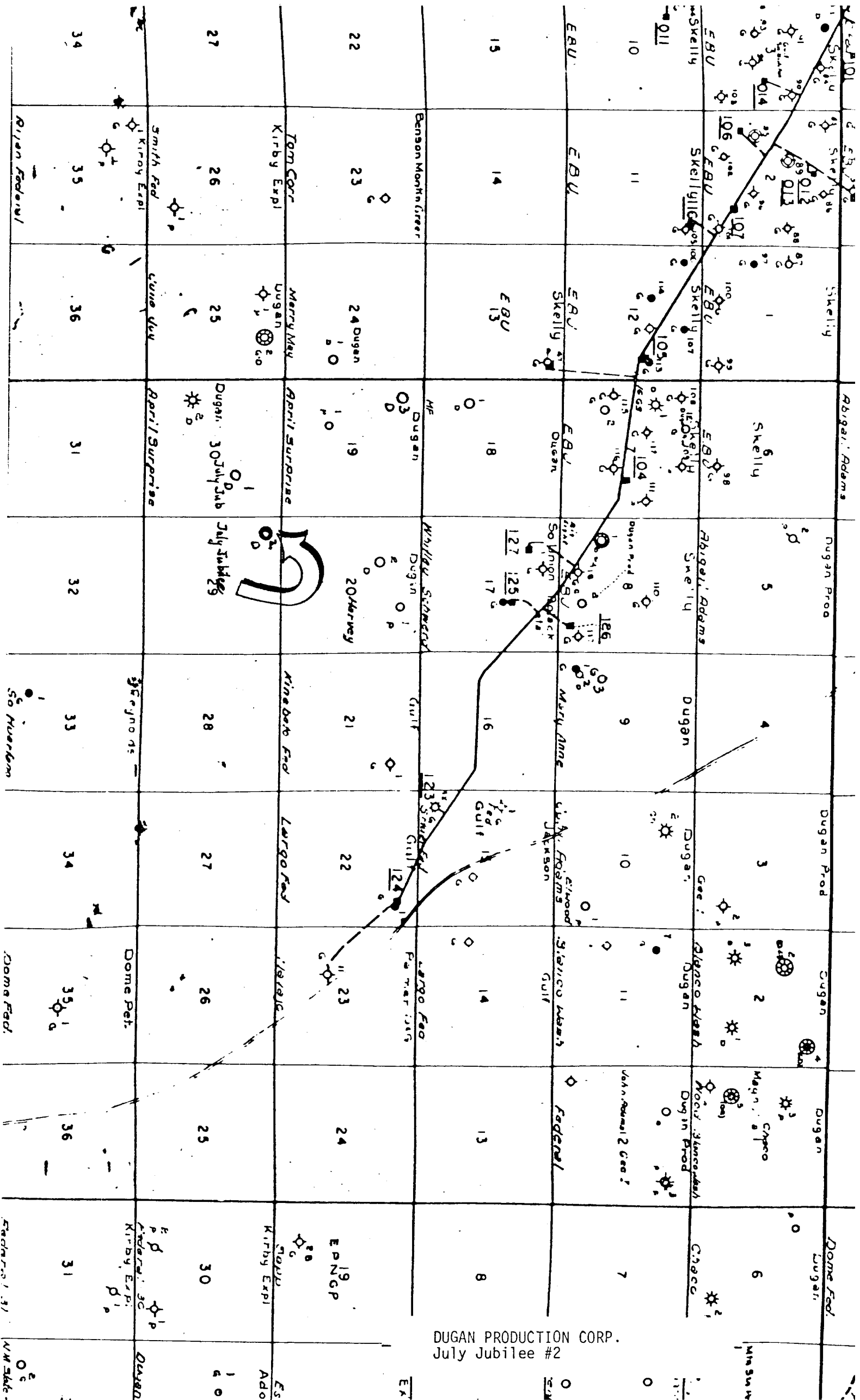
BIST

FIELD

Existing Road  
Access Road

DUGAN PRODUCTION CORP.  
July Jubilee #2

Oil Well  
6847'



DUGAN PRODUCTION CORP.  
July Jubilee #2