

6 USGS, Fmn

2 BIA Crownpoint

1 File

1 TR

Form 9-331
Dec. 1973

Form Approved.

Budget Bureau No. 42-R1424

UNITED STATES
DEPARTMENT OF THE INTERIOR
GEOLOGICAL SURVEY

SUNDRY NOTICES AND REPORTS ON WELLS

(Do not use this form for proposals to drill or to deepen or plug back to a different reservoir. Use Form 9-331-C for such proposals.)

1. oil well ☒ gas well ☐ other ☐

2. NAME OF OPERATOR
DUGAN PRODUCTION CORP.

3. ADDRESS OF OPERATOR
P O Box 208, Farmington, NM 87401

4. LOCATION OF WELL (REPORT LOCATION CLEARLY. See space 17 below.)
AT SURFACE: 660' FNL - 330' FWL
AT TOP PROD. INTERVAL:
AT TOTAL DEPTH:

16. CHECK APPROPRIATE BOX TO INDICATE NATURE OF NOTICE, REPORT, OR OTHER DATA

REQUEST FOR APPROVAL TO:

SUBSEQUENT REPORT OF:

TEST WATER SHUT-OFF ☐

FRACTURE TREAT ☐

SHOOT OR ACIDIZE ☐

REPAIR WELL ☐

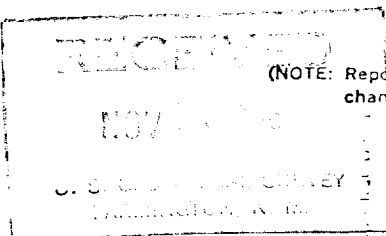
PULL OR ALTER CASING ☐

MULTIPLE COMPLETE ☐

CHANGE ZONES ☐

ABANDON* ☐

(other) ☐

☐
☒
☒
☐
☐
☐
☐
☐


(NOTE: Report results of multiple completion or zone change on Form 9-330.)

17. DESCRIBE PROPOSED OR COMPLETED OPERATIONS (Clearly state all pertinent details, and give pertinent dates, including estimated date of starting any proposed work. If well is directionally drilled, give subsurface locations and measured and true vertical depths for all markers and zones pertinent to this work.)*

See reverse for report of perfs 11-6-81
frac 11-6-81
tubing 11-7-81.

Subsurface Safety Valve: Manu. and Type _____ Ft.

18. I hereby certify that the foregoing is true and correct

SIGNED Thomas A. Dugan TITLE Petroleum Engineer DATE 11-9-81

(This space for Federal or State office use)

APPROVED BY _____ TITLE _____ DATE _____

CONDITIONS OF APPROVAL, IF ANY:



DAILY REPORT

- 11-4-81 Move in and rig up MTK Rig #2. Nipple up BOP. Go in hole w/ tbg. and 3-7/8" bit. Tag up at 4383'.
- 11-5-81 Drlg. 15' cement and DV tool at 4408'. Go in hole w/ tbg. Tag up at 5440'. Clean out to 5470'. Circulate clean. Rig up Smith Energy. Press. test csg. to 4000 psi. OK. Spot 250 gal 7½% HCL. T.O.H. w/ tbg.
- 11-6-81 Rig up Welex. Ran GR-CCL from PBTD 5481' to 5000, 4450 to 4100. Perforate Gallup 5202-10 (4 holes), 5220-32 (6 holes), 5249-61 (6 holes), 5272-76 (2 holes), 5298-5302 (2 holes), 5334-42 (8 holes), 5374-82 (4 holes), 5431-43 (6 holes). Total 38 holes.
- Rig up Smith Energy. Broke formation down at 3800 psi at 46 BPM. Acidize perms w/ 250 gal 15% HCL. Dropped 50 ball sealers. Did not ball off. Some ball action. ISDP 1100 psi, Max press 3700 psi. Ran 4½" junk basket. Retrieved 48 balls (30 hits, 18 no hits).

Fraced well as follows:

10,000 gal slick water - pad
10,000 gal slick water w/ 1# 20-40 sand per gal
41,800 gal slick water w/ 1½# 20-40 sand per gal
3,612 gal slick water flush.

ISDP 1000 psi 15 min 600 psi
Max press 2900 psi Min press 2600 psi
Ave treating press 2700 psi at 47 BPM

Totals: 73,000# 20-40 sand, 40 gal WFR-2, 80 gal SAA-1 (surfactant), 65,412 gal slick water

Shut well in over night.

- 11-7-81 Open well up. Flowing back. Go in hole w/ tbg. Tag up at 5438'. Circulate sand out to 5470'. Land tubing as follows: 172 jts. 2-3/8" OD, 4.7#, J-55, 8 Rd, EUE tbg. T.E. 5397.26' set at 5405' RKB
- Nipple down BOP. Nipple up well head. Rig down MTK. Flow well thru tbg. over night.
- 11-8-81 Well dead. Shut in.