

5 USGS

2 Wexpro

1 File

Form Approved  
Budget Bureau No. 42-R1424

UNITED STATES  
DEPARTMENT OF THE INTERIOR  
GEOLOGICAL SURVEY

SUNDRY NOTICES AND REPORTS ON WELLS

(Do not use this form for proposals to drill or to deepen or plug back to a different reservoir. Use Form 9-331-C for such proposals.)

1. oil ☐ gas ☒ other

2. NAME OF OPERATOR  
DUGAN PRODUCTION CORP.

3. ADDRESS OF OPERATOR  
P O Box 208, Farmington, NM 87401

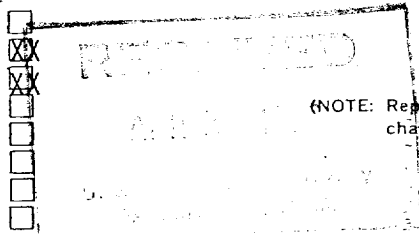
4. LOCATION OF WELL (REPORT LOCATION CLEARLY. See space 17 below.)  
AT SURFACE: 1520' FNL - 790' FEL  
AT TOP PROD. INTERVAL:  
AT TOTAL DEPTH:

16. CHECK APPROPRIATE BOX TO INDICATE NATURE OF NOTICE, REPORT, OR OTHER DATA

REQUEST FOR APPROVAL TO:

TEST WATER SHUT-OFF ☐  
FRACTURE TREAT ☐  
SHOOT OR ACIDIZE ☐  
REPAIR WELL ☐  
PULL OR ALTER CASING ☐  
MULTIPLE COMPLETE ☐  
CHANGE ZONES ☐  
ABANDON\* ☐  
(other) ☐

SUBSEQUENT REPORT OF:



(NOTE: Report results of multiple completion or zone change on Form 9-330.)

17. DESCRIBE PROPOSED OR COMPLETED OPERATIONS (Clearly state all pertinent details, and give pertinent dates, including estimated date of starting any proposed work. If well is directionally drilled, give subsurface locations and measured and true vertical depths for all markers and zones pertinent to this work.)\*

See reverse for report of Dakota perfs 4-19 & 4-22  
acid 4-20 & 4-23-82.

Subsurface Safety Valve: Manu. and Type \_\_\_\_\_

Set @ \_\_\_\_\_ Ft.

18. I hereby certify that the foregoing is true and correct

SIGNED Jim L. Jacobs TITLE Geologist DATE 4-26-82

(This space for Federal or State office use)

APPROVED BY \_\_\_\_\_ TITLE \_\_\_\_\_ DATE \_\_\_\_\_  
CONDITIONS OF APPROVAL, IF ANY:

NMOCC

- 4-16-82 Move in and rig up MTK Rig #2. Set drlg. equipment. T.I.H. with 2-3/8" tbg. and 3-7/8" bit. Tag up on cement above D.V. tool.
- 4-17-82 Drlg. out 5' cement and D.V. tool at 4311'. T.I.H. with tbg. to 6284'. Drlg. out cement and junk to 6361' PBTD. T.O.H. with 2-3/8" tbg. and bit. S.W.I. for weekend.
- 4-18-82 Shut down - Sunday
- 4-19-82 Nipple up BOP. Rig up Jetronics. Ran GR-CCL from PBTD 6362' to 5000'. Perforate Dakota formation 6284-88 and 6292-98'. Total 10 holes. TIH with Baker 4 1/2" model "R" packer set at 6276' RKB. Swab tbg. down. Wait 30 min. 100' fluid came in hole. Swab down. Shut in.
- 4-20-82 Swabbing. Show of gas TSTM. Fluid level down to 5700'. Rig up Cementers Inc. Pump 250 gals 15% HCL. Displace with 24.5 bbls. water. Ave treating press 2700 psi. Max pressure 3000 psi. Couldn't exceed 3000 psi (valves only rated that high). Swab well. Hit tight spot at 2600', tearing up swab cups. Swabbed fluid down to 5500'. Small amount of gas. Shut well in for night.
- 4-21-82 Fluid level 3800' from surface. Swab well down. Very small amount of gas. Will not burn. Having to change swab cups each run. Wait 30 min. - very small amount of fluid entry. Wait 30 min. - very small amount of fluid entry. Wait 30 min. - very small amount of fluid entry. P.O.H. with packer - Shut in.
- 4-22-82 Rig up Jetronics. Perforate upper Dakota 6190'-6200', 10 holes. Rig down Jetronics. T.I.H. with tbg. and Baker 4 1/2" Model "R" packer. Set at 6168' RKB. Swab tbg. down. Shut in.
- 4-23-82 Opened well up. Seemed to be on vacuum. Ran swab. 300' fluid came in hole over nite. Swab down. Wait 30 min. No fluid entry. Rig up Cementers Inc. Purss up on csg. to 2000 psi. Packer not holding. Reset packer. Still not holding. Circulating out tbg. Shut csg. in. Rig up on tbg. Break down perfs 6190-6200 with water at 1000 psi. Acidize with 250 gal 15% HCL. Displaced to top perf. ISDP 750 psi. Rig down Cementers Inc. Unable to get swab below  $\pm$ 2600'. Sinker bar will go below but not swab cup. Able to get old swab cup below 2600'. Had to pour rope socket. Sand line was stranded. Able to get old swab cup thru tight spots. Not new ones. Pull 48 stands out of hole looking for bad tbg.
- 4-24-82 Swab tbg. down with 48 stands out of hole. Went in hole with 48 stands to 6164'. Swab tbg. down to 4000'. Shut in.