

OIL CONSERVATION DIVISION

P. O. BOX 2088

SANTA FE, NEW MEXICO 87501

Form C-102
Revised 10-1-78STATE OF NEW MEXICO
ENERGY AND MINERALS DEPARTMENT

All distances must be from the outer boundaries of the Section.

Operator Dugan Production Corporation		Lease MF		Well No. 4	
Unit Letter H	Section 14	Township 24 North	Range 10 West	County San Juan	
Actual Footage Location of Well: 1520 feet from the North line and 790 feet from the East line					
Ground Level Elev. 6857	Producing Formation GALLUP		Pool Bisti Gallup Extension		Dedicated Acreage: 80 Acres

1. Outline the acreage dedicated to the subject well by colored pencil or hachure marks on the plat below.

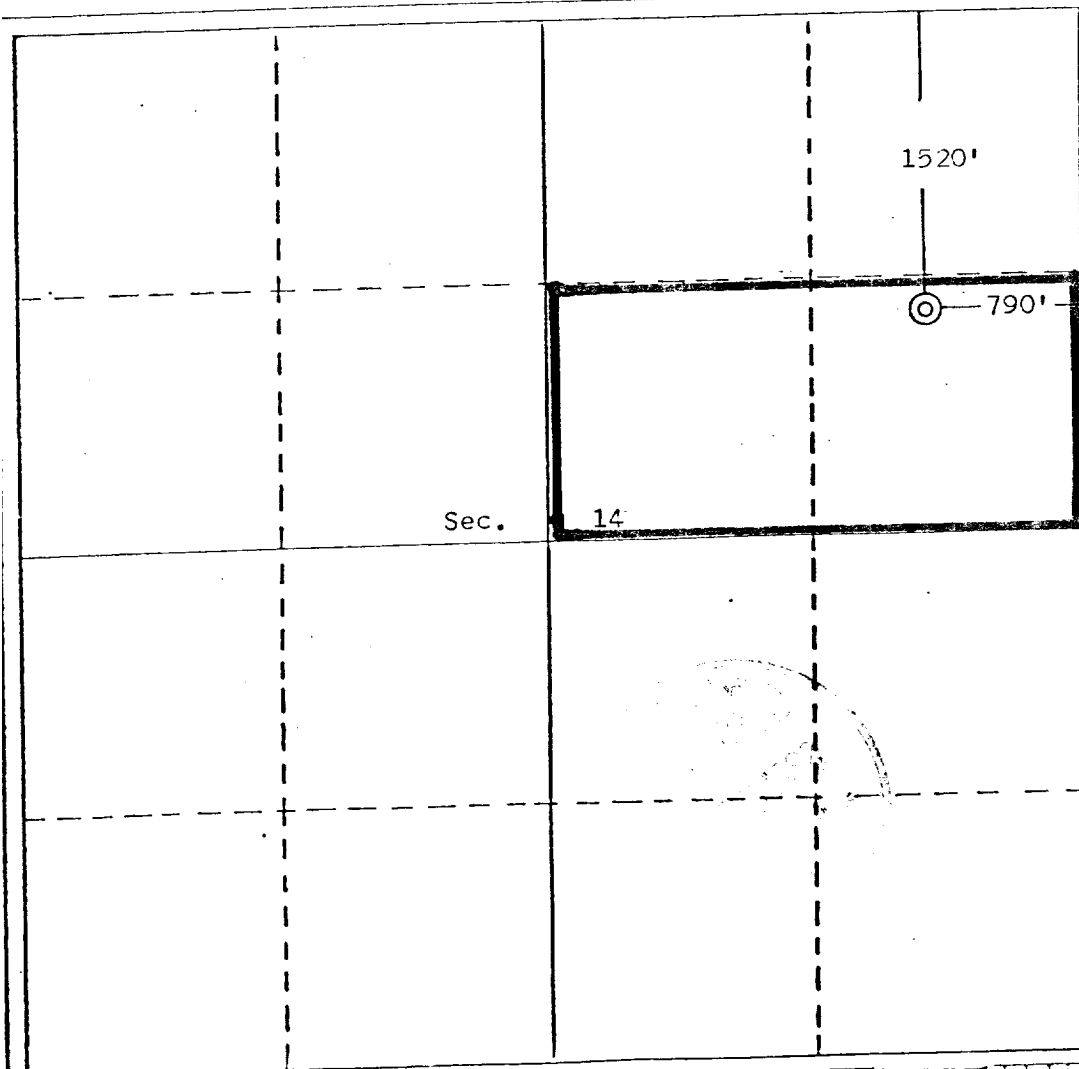
2. If more than one lease is dedicated to the well, outline each and identify the ownership thereof (both as to working interest and royalty).

3. If more than one lease of different ownership is dedicated to the well, have the interests of all owners been consolidated by communization, unitization, force-pooling, etc?

☐ Yes ☐ No If answer is "yes," type of consolidation _____

If answer is "no," list the owners and tract descriptions which have actually been consolidated. (Use reverse side of this form if necessary.) _____

No allowable will be assigned to the well until all interests have been consolidated (by communization, unitization, forced-pooling, or otherwise) or until a non-standard unit, eliminating such interests, has been approved by the Division.



CERTIFICATION

I hereby certify that the information contained herein is true and complete to the best of my knowledge and belief.

Thomas A. Dugan
NameThomas A. Dugan
Position
Petroleum Engineer

Company

Dugan Production Corp.

Date

5-17-82

I hereby certify that the location shown on this plat was plotted from field notes of actual survey made by me or under my supervision, and that the same is true, correct to the best of my knowledge.

Date Surveyed

August 1, 1981

Registered Professional Engineer
and/or Land Surveyor*Edgar L. Risenhoover*
Certificate No. 5979