

STATE OF NEW MEXICO  
ENERGY AND MINERALS DEPARTMENT

OIL CONSERVATION DIVISION

P. O. BOX 2088

SANTA FE, NEW MEXICO 87501

30-045-25272  
30-045-25233  
Form C-101  
Revised 10-1-78

NO. OF COPIES RECEIVED	
DISTRIBUTION	
SANTA FE	
FILE	
U.S.G.S.	
LAND OFFICE	
OPERATOR	

5A. Indicate Type of Lease  
STATE ☒ FEE ☐  
5. State Oil & Gas Lease No.  
L-2986

APPLICATION FOR PERMIT TO DRILL, DEEPEN, OR PLUG BACK

1a. Type of Work  
b. Type of Well DRILL ☒ DEEPEN ☐ PLUG BACK ☐  
OIL WELL ☒ GAS WELL ☐ OTHER ☐ SINGLE ZONE ☒ MULTIPLE ZONE ☐  
2. Name of Operator  
Kenai Oil and Gas, Inc.  
3. Address of Operator  
2000 Energy Center One, 717-17th Street, Denver, Colorado 80202  
4. Location of Well  
UNIT LETTER L LOCATED 1650 FEET FROM THE South LINE  
AND 990 FEET FROM THE West LINE OF SEC. 36 TWP. 24N RGE. 8W NMPM  
19. Proposed Depth 5800  
19A. Formation Gallup  
20. Rotary or C.T. Rotary  
21. Elevations (Show whether DF, RT, etc.) 6871 GL  
21A. Kind & Status Plug. Bond Blanket  
21B. Drilling Contractor Young Drilling  
22. Approx. Date Work will start 11-1-81

23. PROPOSED CASING AND CEMENT PROGRAM

SIZE OF HOLE	SIZE OF CASING	WEIGHT PER FOOT	SETTING DEPTH	SACKS OF CEMENT	EST. TOP
12 1/4	8 5/8	24#	250'	250 sx	Surface
7 7/8	5 1/2	15.5#	5800'	1000 sx	Cover Ojo Alamo

The gas is not dedicated.

The NWSW of Section 36 is dedicated to this well.

Selectively test, perforate, and sandwater fracture the Gallup formation. A 3000 psi WP and 6000 psi test, double gate preventer will be used for blow out prevention. It will be equipped with blind and pipe rams.

APPROVAL VALID  
FOR 60 DAYS UNLESS  
RENEWED OR COMMENCED,

5-8-82



ABOVE SPACE DESCRIBE PROPOSED PROGRAM: IF PROPOSAL IS TO DEEPEN OR PLUG BACK, GIVE DATA ON PRESENT PRODUCTIVE ZONE AND PROPOSED NEW PRODU. ZONE. GIVE BLOWOUT PREVENTER PROGRAM, IF ANY.

I hereby certify that the information above is true and complete to the best of my knowledge and belief.

Signed David P. Howell Title District Engineer Date 10-16-81

(This space for State Use)

APPROVED BY Frank T. Chang TITLE SUPERVISOR DISTRICT # 3 DATE NOV 3-1981

CONDITIONS OF APPROVAL, IF ANY:

**NEW MEXICO OIL CONSERVATION COMMISSION  
WELL LOCATION AND ACREAGE DEDICATION PLAT**

Form C-102  
Supersedes C-128  
Effective 1-1-65

All distances must be from the outer boundaries of the Section.

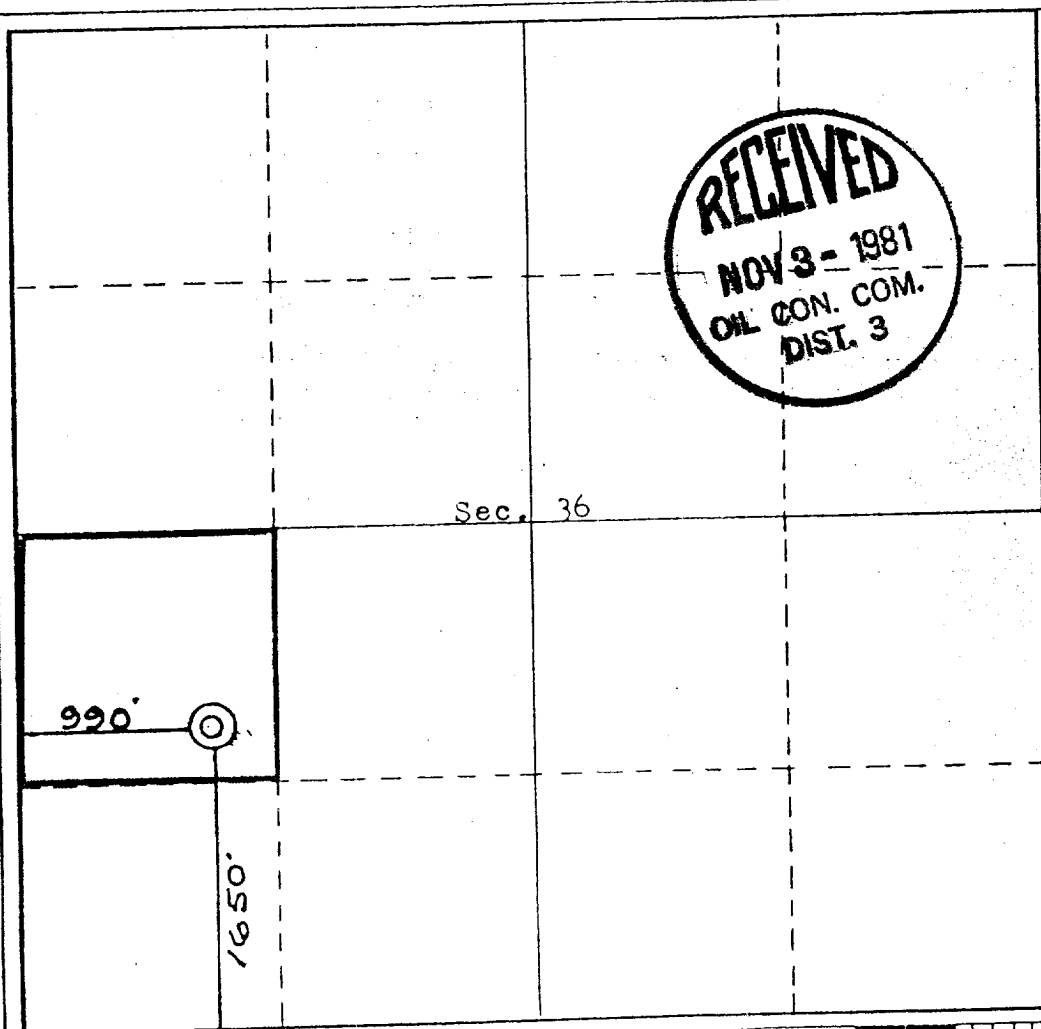
Operator <b>KENAI OIL &amp; GAS INC.</b>			Lease <b>NEW MEXISO STATE 36</b>		Well No. <b>13</b>
Unit Letter <b>L</b>	Section <b>36</b>	Township <b>24 NORTH</b>	Range <b>8 WEST</b>	County <b>SAN JUAN</b>	
Actual Footage Location of Well: <div style="display: flex; justify-content: space-between;"> <span><b>1650</b> feet from the <b>SOUTH</b> line and</span> <span><b>990</b> feet from the <b>WEST</b> line</span> </div>					
Ground Level Elev. <b>6871</b>	Producing Formation <b>GALLUP</b>	Pool <b>Lybrook-Gallup Extension</b>		Dedicated Acreage: <b>40</b>	Acres

1. Outline the acreage dedicated to the subject well by colored pencil or hachure marks on the plat below.
2. If more than one lease is dedicated to the well, outline each and identify the ownership thereof (both as to working interest and royalty).
3. If more than one lease of different ownership is dedicated to the well, have the interests of all owners been consolidated by communitization, unitization, force-pooling, etc?

☐ Yes   ☐ No   If answer is "yes," type of consolidation \_\_\_\_\_

If answer is "no," list the owners and tract descriptions which have actually been consolidated. (Use reverse side of this form if necessary.) \_\_\_\_\_

No allowable will be assigned to the well until all interests have been consolidated (by communitization, unitization, forced-pooling, or otherwise) or until a non-standard unit, eliminating such interests, has been approved by the Commission.



**CERTIFICATION**

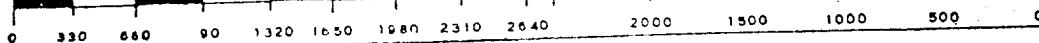
I hereby certify that the information contained herein is true and complete to the best of my knowledge and belief.

*David P. Howell*

Name  
**David P. Howell**  
Position  
**District Engineer**  
Company  
**Kenai Oil and Gas Inc.**  
Date  
**10-12-81**

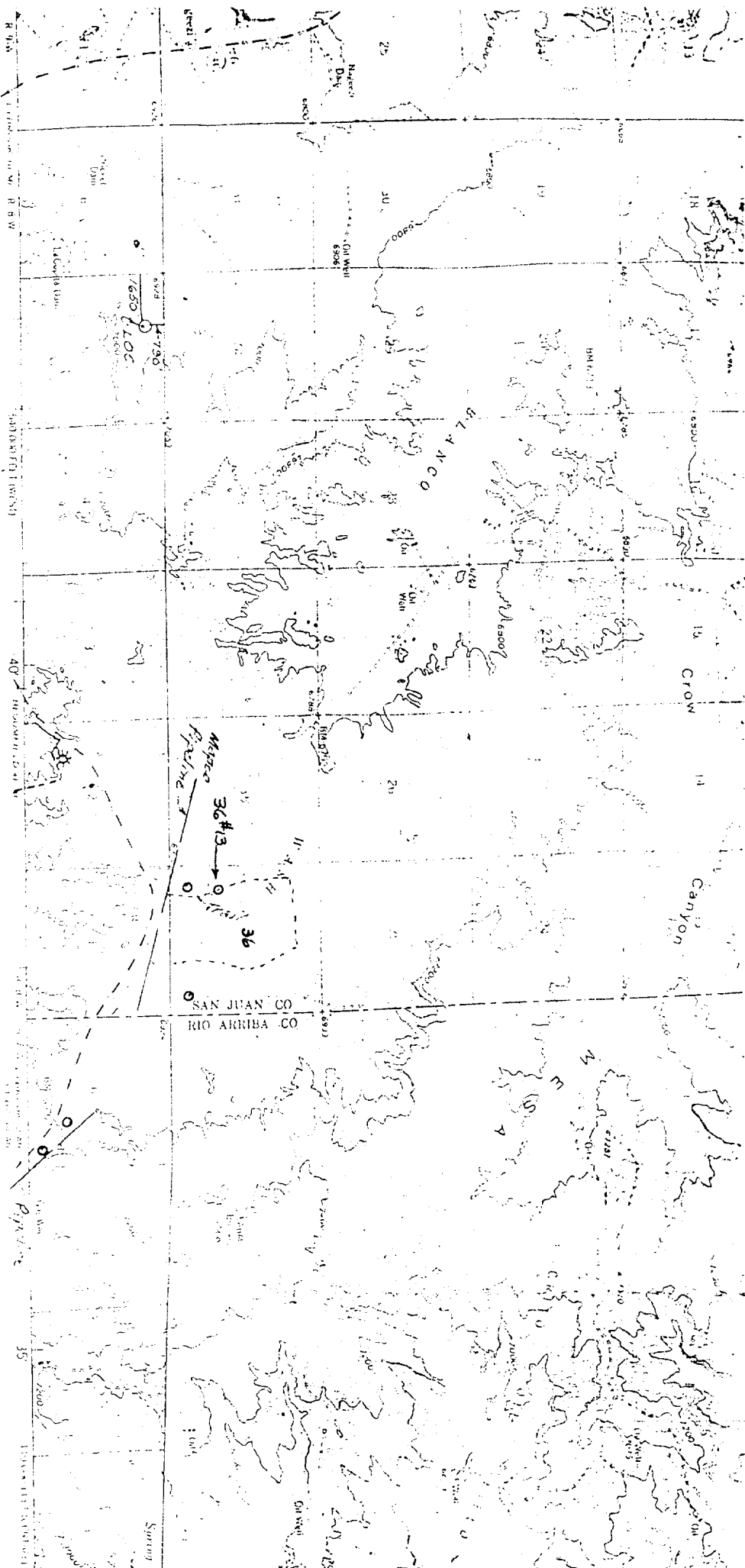
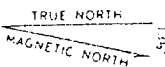
I hereby certify that the well location shown on this plat was plotted from field notes of actual surveys made by me or under my supervision, and that the same is true and correct to the best of my knowledge and belief.

**5 AUG 1981**  
Date Surveyed  
*Curtis A. Stocking*  
Registered Professional Engineer  
and/or Land Surveyor  
**5850LS**  
Certificate No. **5850**  
**C. STOCKING**



ed, edited, and published by the Geological Survey  
 ed by USGS and HSCXGS  
 ography by photogrammetric methods from aerial  
 ographs taken 1955. 1 inch checked 1959  
 ionic projection. 1927 North American datum  
 300 foot grid based on New Mexico coordinate system.  
 1 and central zone.  
 0 meter Universal Transverse Mercator grid ticks.  
 e 13. shown in blue  
 had land lines indicate approximate locations  
 ain land lines omitted because of insufficient data

APPROXIMATE MEAN  
 DECLINATION, 1959



SCALE 1:62,500

CONTOUR INTERVAL 30 FEET

BASE MAP BY U.S. GEOLOGICAL SURVEY, DENVER 25, COLORADO OR WASHINGTON 25, D.C.

FOR SALE BY U.S. GEOLOGICAL SURVEY, DENVER 25, COLORADO OR WASHINGTON 25, D.C.  
 A FOLDER DESCRIBING TOPOGRAPHIC MAPS AND SYMBOLS IS AVAILABLE ON REQUEST

Vicinity Map for  
 Kenai Oil and Gas Inc. #13 State of NM 36  
 1650 FSL 990 FWL Sec. 36 T24N-R8W  
 San Juan County, New Mexico