

UNITED STATES  
DEPARTMENT OF THE INTERIOR  
GEOLOGICAL SURVEY

30-045-25398

5. LEASE DESIGNATION AND SERIAL NO.

NM 15654

6. IF INDIAN, ALLOTTEE OR TRIBE NAME

7. UNIT AGREEMENT NAME

8. FARM OR LEASE NAME

Rodeo Rosie

9. WELL NO.

1

10. FIELD AND POOL, OR WILDCAT

Basin Dakota

11. SEC., T., R., M., OR BLK.  
AND SURVEY OR AREAA  
Sec 22 T24N R10W

12. COUNTY OR PARISH 13. STATE

San Juan

NM

## APPLICATION FOR PERMIT TO DRILL, DEEPEN, OR PLUG BACK

1a. TYPE OF WORK

DRILL ☒DEEPEN ☐PLUG BACK ☐

b. TYPE OF WELL

OIL  
WELL ☐

GAS

WELL ☒

OTHER

SINGLE  
ZONE ☐MULTIPLE  
ZONE ☐

2. NAME OF OPERATOR

DUGAN PRODUCTION CORP.

3. ADDRESS OF OPERATOR

P O Box 208, Farmington, NM 87401

4. LOCATION OF WELL (Report location clearly and in accordance with any State requirements.)

At surface

790' FNL - 790' FEL

At proposed prod. zone

14. DISTANCE IN MILES AND DIRECTION FROM NEAREST TOWN OR POST OFFICE\*

8 miles WNW of Nageezi, NM

15. DISTANCE FROM PROPOSED\*

LOCATION TO NEAREST  
PROPERTY OR LEASE LINE, FT.  
(Also to nearest drlg. unit line, if any)

790'

18. DISTANCE FROM PROPOSED LOCATION\*

TO NEAREST WELL, DRILLING, COMPLETED,  
OR APPLIED FOR, ON THIS LEASE, FT.

1 mile

16. NO. OF ACRES IN LEASE

1400

19. PROPOSED DEPTH

6400'

17. NO. OF ACRES ASSIGNED

TO THIS WELL

E 320

20. ROTARY OR CABLE TOOLS

Rotary

21. ELEVATIONS (Show whether DF, RT, GR, etc.)

6738' GL

22. APPROX. DATE WORK WILL START\*

6-25-82

23.

## PROPOSED CASING AND CEMENTING PROGRAM

SIZE OF HOLE	SIZE OF CASING	WEIGHT PER FOOT	SETTING DEPTH	QUANTITY OF CEMENT
12-1/4"	8-5/8"	24#	225'	125 sx circulated to surface
7-7/8"	4-1/2"	10.5#	6400'	1460 cu.ft. slurry

Plan to drill with spud mud to set surface casing at 225'. Will then drill with a mud-water-gel mixture to test the Basin Dakota Formation. Will run IES and CDL logs and, if it appears productive, will run 4 1/2" casing, selectively perforate, frac, clean out after frac, and complete well with 1 1/2" tubing.

GAS NOT DEDICATED

IN ABOVE SPACE DESCRIBE PROPOSED PROGRAM: If proposal is to deepen or plug back, give data on present productive zone and proposed new productive zone. If proposal is to drill or deepen directionally, give pertinent data on subsurface locations and measured and true vertical depths. Give blowout preventer program, if any.

24.

SIGNED

Jerry McHugh

TITLE

Well Site Coordinator

DATE

5-4-82

(This space for Federal or State office use)

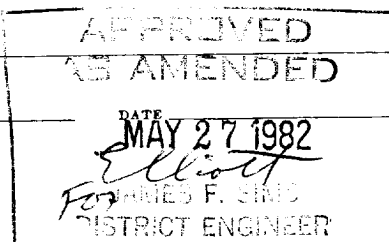
PERMIT NO.

APPROVAL DATE

APPROVED BY

TITLE

CONDITIONS OF APPROVAL, IF ANY:



NMOCC

## OIL CONSERVATION DIVISION

P. O. BOX 2088

Form C-102  
Revised 10-1-78STATE OF NEW MEXICO  
ENERGY AND MINERALS DEPARTMENT

SANTA FE, NEW MEXICO 87501

All distances must be from the outer boundaries of the Section.

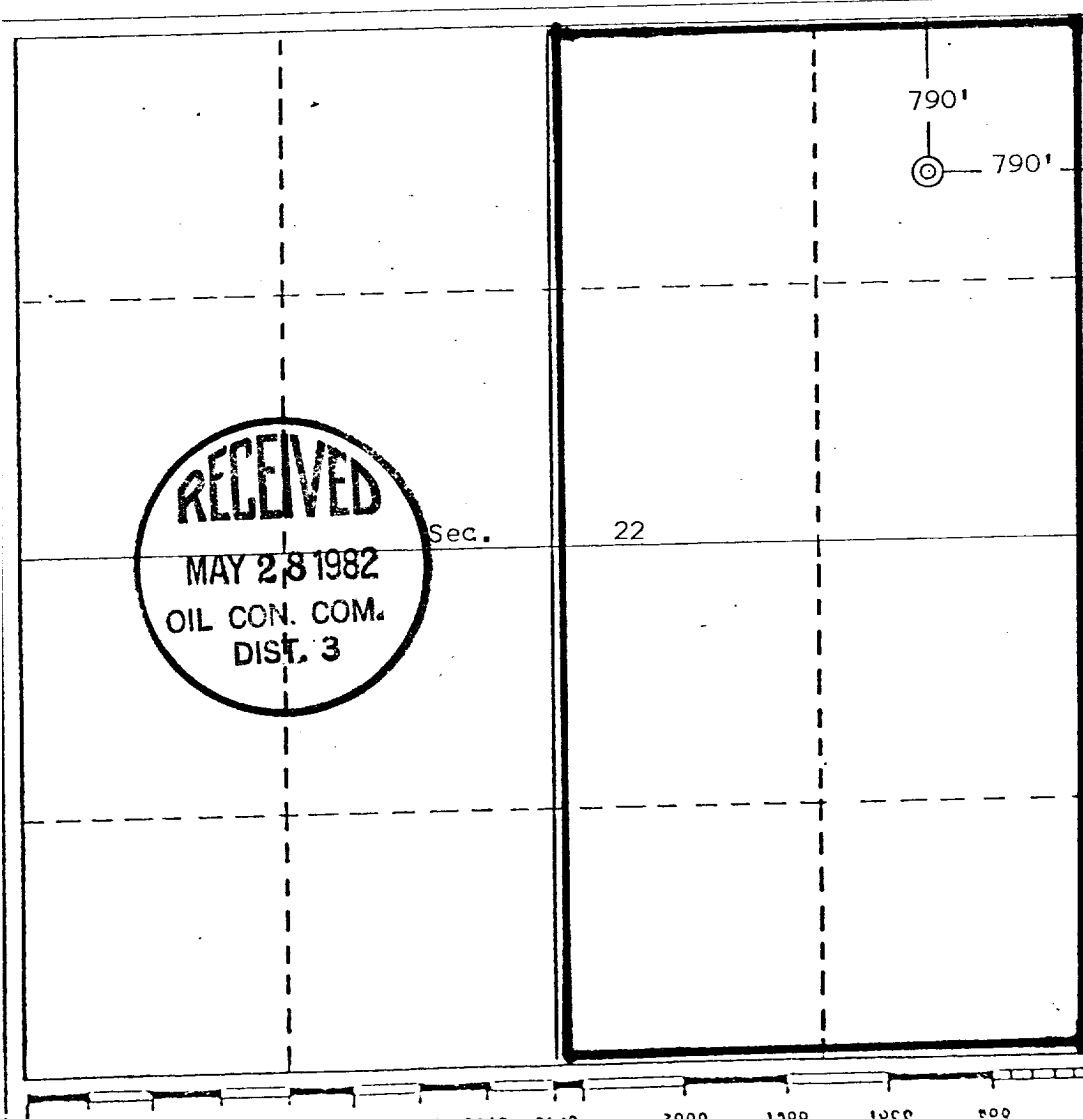
Operator Dugan Production Corporation		Lease Rodeo Rosie		Well No. 1			
Unit Letter A	Section 22	Township 24 North	Range 10 West	County San Juan			
Actual Footage Location of Well:							
790	feet from the	North	line and	790	feet from the	East	line
Ground Level Elev. 6738	Producing Formation Dakota		Pool Basin Dakota		Dedicated Acreage: E 320		Acres

1. Outline the acreage dedicated to the subject well by colored pencil or hachure marks on the plat below.
2. If more than one lease is dedicated to the well, outline each and identify the ownership thereof (both as to working interest and royalty).
3. If more than one lease of different ownership is dedicated to the well, have the interests of all owners been consolidated by communitization, unitization, force-pooling, etc?

☐ Yes ☐ No If answer is "yes," type of consolidation \_\_\_\_\_

If answer is "no," list the owners and tract descriptions which have actually been consolidated. (Use reverse side of this form if necessary.) \_\_\_\_\_

No allowable will be assigned to the well until all interests have been consolidated (by communitization, unitization, forced-pooling, or otherwise) or until a non-standard unit, eliminating such interests, has been approved by the Division.



## CERTIFICATION

I hereby certify that the information contained herein is true and complete to the best of my knowledge and belief.

*Jerry McHugh*  
Name  
Jerry McHugh

Position  
Well Site Coordinator

Company  
Dugan Production Corp.

Date  
5-4-82

I hereby certify that the location of the well shown on this plat was obtained from field notes and measurements made by me or under my supervision and that the same is true and correct to the best of my knowledge and belief.

EDGAR L. RISENHOVER  
REGISTERED LAND SURVEYOR  
NEW MEXICO  
5979

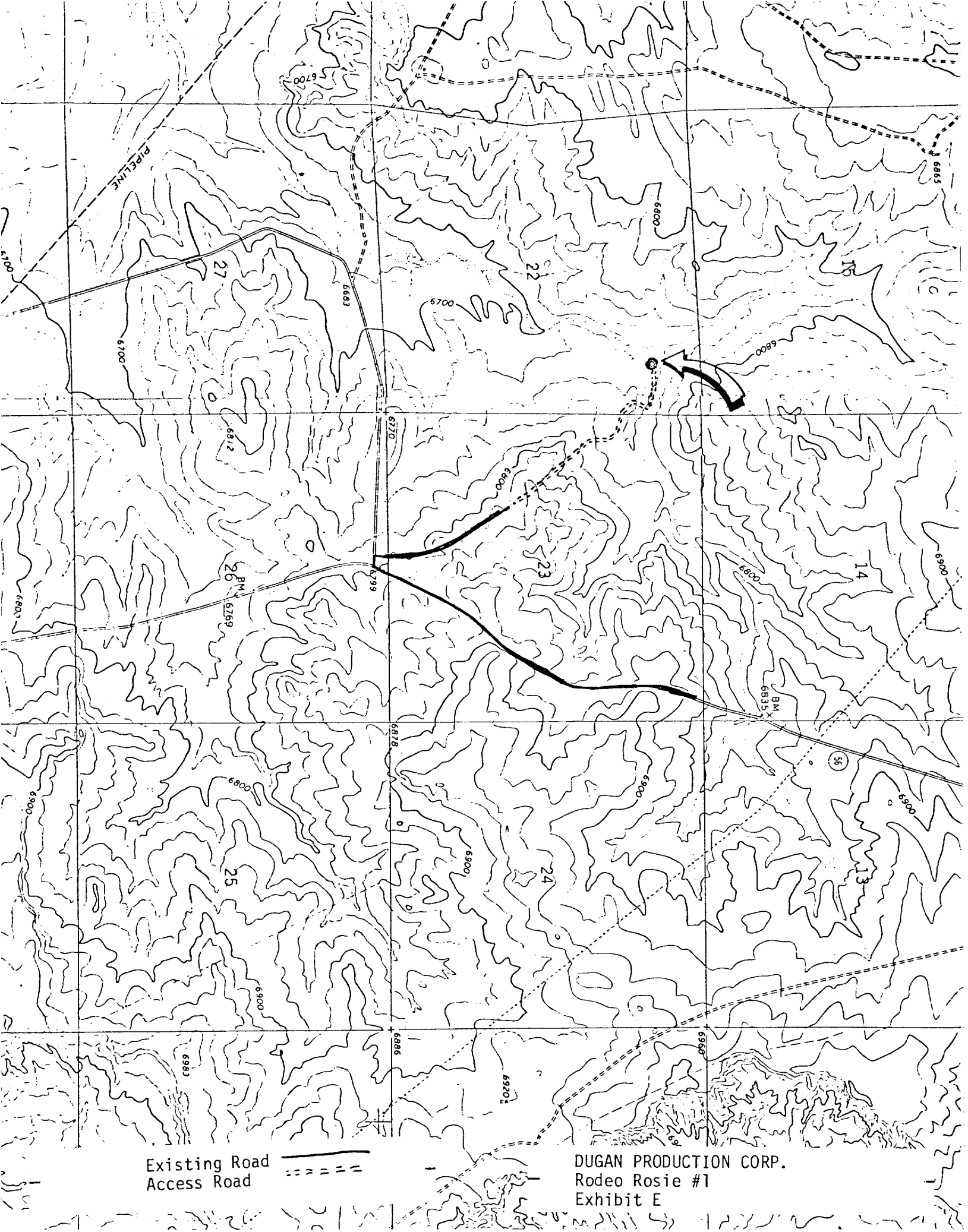
Date Surveyed

March 11, 1982

Registered Professional Engineer  
and/or Land Surveyor

*Edgar L. Risenhoover*  
Certificate No. 5979

Edgar L. Risenhoover, L.S.



Existing Road  
Access Road

DUGAN PRODUCTION CORP.  
Rodeo Rosie #1  
Exhibit E