

UNITED STATES  
DEPARTMENT OF THE INTERIOR  
GEOLOGICAL SURVEY

APPLICATION FOR PERMIT TO DRILL, DEEPEN, OR PLUG BACK

1a. TYPE OF WORK  
DRILL ☒ DEEPEN ☐ PLUG BACK ☐

b. TYPE OF WELL  
OIL WELL ☐ GAS WELL ☒ OTHER ☐

2. NAME OF OPERATOR  
DUGAN PRODUCTION CORP.

3. ADDRESS OF OPERATOR  
P O Box 208, Farmington, NM 87401

4. LOCATION OF WELL (Report location clearly and in accordance with any State requirements)  
At surface 790' FSL - 790' FWL  
At proposed prod. zone

14. DISTANCE IN MILES AND DIRECTION FROM NEAREST TOWN OR POST OFFICE  
13 miles west of Nageezi, NM

15. DISTANCE FROM PROPOSED\* LOCATION TO NEAREST PROPERTY OR LEASE LINE, FT.  
(Also to nearest drlg. unit line, if any) 790'

16. NO. OF ACRES IN LEASE 960

17. NO. OF ACRES ASSIGNED TO THIS WELL 5 320

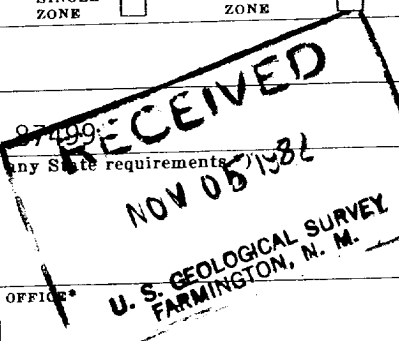
18. DISTANCE FROM PROPOSED\* LOCATION TO NEAREST WELL, DRILLING, COMPLETED, OR APPLIED FOR, ON THIS LEASE, FT. 2000'

19. PROPOSED DEPTH 5860'

20. ROTARY OR CABLE TOOLS Rotary

21. ELEVATIONS (Show whether DF, RT, GR, etc.) 6560 GL

22. APPROX. DATE WORK WILL START\* ASAP



5. LEASE DESIGNATION AND SERIAL NO.  
NM 17015

6. IF INDIAN, ALLOTTEE OR TRIBE NAME

7. UNIT AGREEMENT NAME

8. FARM OR LEASE NAME  
Herry Monster

9. WELL NO.  
1

10. FIELD AND POOL, OR WILDCAT  
Basin Dakota

11. SEC., T., R., M., OR BLK. AND SURVEY OR AREA  
Sec 12, T24N, R11W

12. COUNTY OR PARISH  
San Juan

13. STATE  
NM

23. PROPOSED CASING AND CEMENTING PROGRAM				
SIZE OF HOLE	SIZE OF CASING	WEIGHT PER FOOT	SETTING DEPTH	QUANTITY OF CEMENT
12-1/4"	8-5/8"	24	220'	159.3 cu.ft. Class "B" to surface
7-7/8"	4-1/2"	11.6/10.5	5775'	1650.0 cu.ft. Total Slurry

Plan to drill with spud mud to set surface casing at 220'. Will then drill with water-mud-gel mixture to test the Dakota formation. Plan to run IES & CDL logs, and if the well appears productive will run 4 1/2" casing. Will then selectively perforate, frac, clean-out after frac, and hopefully complete well using 1 1/2" tubing.



IN ABOVE SPACE DESCRIBE PROPOSED PROGRAM: If proposal is to deepen or plug back, give data on present productive zone and proposed new productive zone. If proposal is to drill or deepen directionally, give pertinent data on subsurface locations and measured and true vertical depths. Give blowout preventer program, if any.

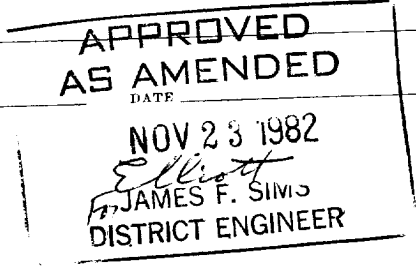
24. SIGNED Jerry McHugh TITLE Landman DATE 11-5-82

(This space for Federal or State office use)

PERMIT NO. \_\_\_\_\_ APPROVAL DATE \_\_\_\_\_

APPROVED BY \_\_\_\_\_ TITLE \_\_\_\_\_

CONDITIONS OF APPROVAL, IF ANY:



NMOCC

## OIL CONSERVATION DIVISION

STATE OF NEW MEXICO  
ENERGY AND MINERALS DEPARTMENTP. O. BOX 2088  
SANTA FE, NEW MEXICO 87501Form C-102  
Revised 10-1-78

All distances must be from the outer boundaries of the Section.

Operator Dugan Production Corporation		Lease Herry Monster		Well No. 1
Unit Letter M	Section 12	Township 24 North	Range 11 West	County San Juan

Actual Footage Location of Well:								
790	feet from the	South	line and	790	feet from the	West	line	
Ground Level Elev. 6560	Producing Formation Dakota		Pool Basin Dakota		Dedicated Acreage: 5 320			Acres

1. Outline the acreage dedicated to the subject well by colored pencil or hatchure marks on the plat below.
2. If more than one lease is dedicated to the well, outline each and identify the ownership thereof (both as to working interest and royalty).
3. If more than one lease of different ownership is dedicated to the well, have the interests of all owners been consolidated by communitization, unitization, force-pooling, etc?

☐ Yes ☐ No If answer is "yes," type of consolidation \_\_\_\_\_

If answer is "no," list the owners and tract descriptions which have actually been consolidated. (Use reverse side of this form if necessary.) \_\_\_\_\_

No allowable will be assigned to the well until all interests have been consolidated (by communitization, unitization, forced-pooling, or otherwise) or until a non-standard unit, eliminating such interests, has been approved by the Division.

Sec. 12	
790'	
790'	

RECEIVED  
NOV 05 1982  
U. S. GEOLOGICAL SURVEY  
FARMINGTON, N. M.

RECEIVED  
NOV 24 1982  
OIL CON. COM.  
DIST. 3

## CERTIFICATION

I hereby certify that the information contained herein is true and complete to the best of my knowledge and belief.

*Jerry McHugh*

Name

Jerry McHugh

Position

Landman

Company

DUGAN PRODUCTION CORP.

Date

11-5-82

I hereby certify that the well location shown on this plat was located from field notes of actual survey made by me or under my supervision, and that the same is true and correct to the best of my knowledge and belief.

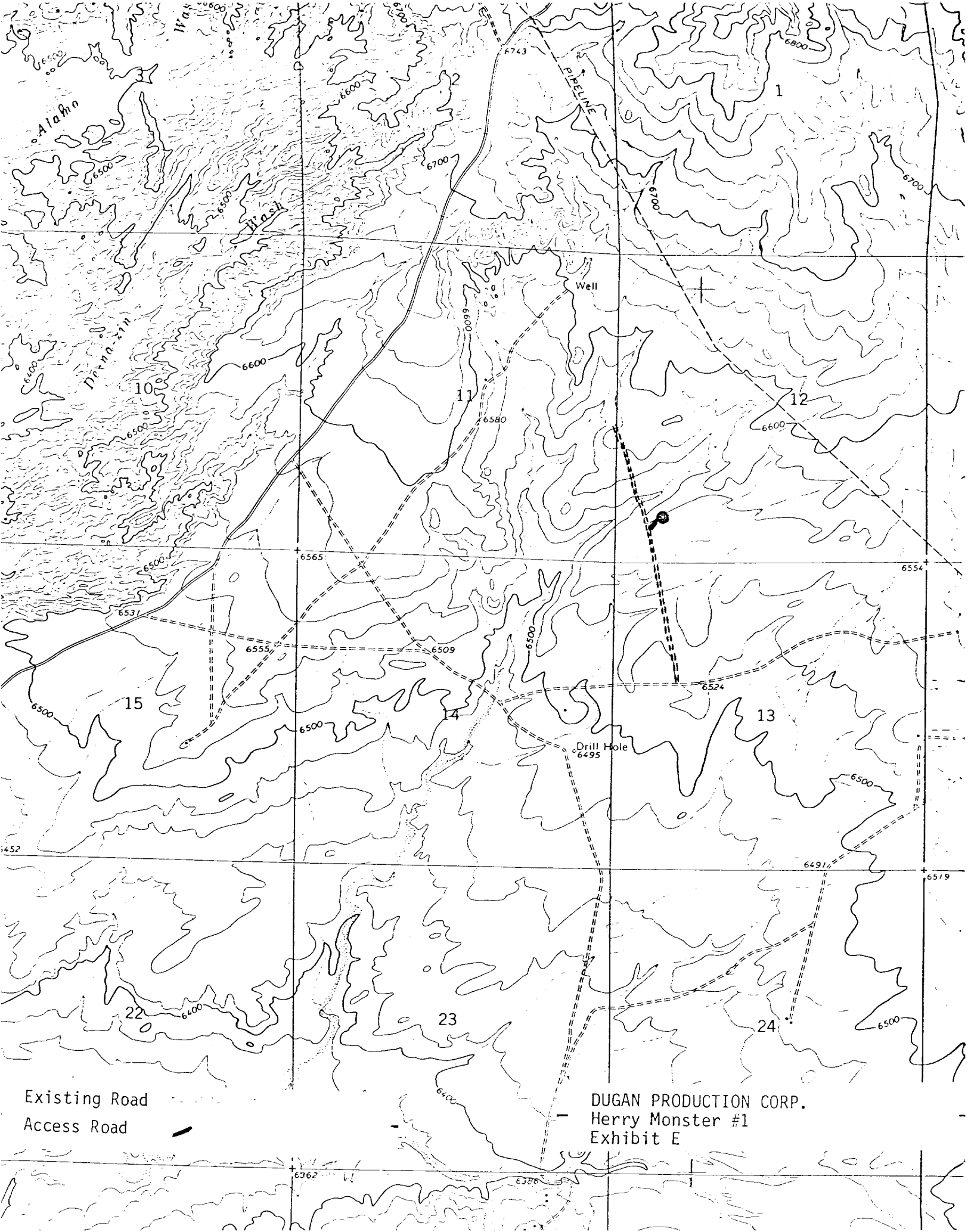
Date Surveyed

October 29, 1982

Registered Professional Engineer  
and/or Land Surveyor*Edgar L. Risenhoover*

Certificate No. 5979

Edgar L. Risenhoover, L.S.



Existing Road  
Access Road

DUGAN PRODUCTION CORP.  
Herry Monster #1  
Exhibit E