

UNITED STATES  
DEPARTMENT OF THE INTERIOR  
GEOLOGICAL SURVEY

## APPLICATION FOR PERMIT TO DRILL, DEEPEN, OR PLUG BACK

## 1a. TYPE OF WORK

DRILL ☒DEEPEN ☐PLUG BACK ☐

## b. TYPE OF WELL

OIL  
WELL ☐GAS  
WELL ☒

OTHER

SINGLE  
ZONE ☐MULTIPLE  
ZONE ☐

## 2. NAME OF OPERATOR

DUGAN PRODUCTION CORP.

## 3. ADDRESS OF OPERATOR

P. O. Box 208, Farmington, NM 87499

## 4. LOCATION OF WELL (Report location clearly and in accordance with any State requirements.)

At surface

1790' FSL - 850' FEL

At proposed prod. zone

## 14. DISTANCE IN MILES AND DIRECTION FROM NEAREST TOWN OR POST OFFICE\*

13 miles west of Nageezi, N. M.

## 15. DISTANCE FROM PROPOSED\*

LOCATION TO NEAREST  
PROPERTY OR LEASE LINE, FT.  
(Also to nearest drlg. unit line, if any)

470'

## 18. DISTANCE FROM PROPOSED LOCATION\*

TO NEAREST WELL, DRILLING, COMPLETED,  
OR APPLIED FOR, ON THIS LEASE, FT.

1/4 mile

## 21. ELEVATIONS (Show whether DF, RT, GR, etc.)

6493 GL

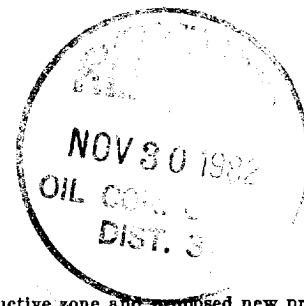
## 23.

## PROPOSED CASING AND CEMENTING PROGRAM

SIZE OF HOLE	SIZE OF CASING	WEIGHT PER FOOT	SETTING DEPTH	QUANTITY OF CEMENT
8-3/4"	7"	23#	90'	59 cu.ft. to surface
5-1/8"	2-7/8"	6.5#	1300'	160 cu.ft. to surface

Plan to drill with spud mud to set 7" surface casing @ 90'. Then will drill using the slim-hole technique to 1300' to test the Pictured Cliffs formation. Plan to run IES log, and if the well appears productive, will run 2-7/8" pipe as casing. Will selectively perforate, frac, clean out after frac and complete well using 1-1/4" tubing.

NMERB Requirement: Gas not dedicated.



IN ABOVE SPACE DESCRIBE PROPOSED PROGRAM: If proposal is to deepen or plug back, give data on present productive zone and proposed new productive zone. If proposal is to drill or deepen directionally, give pertinent data on subsurface locations and measured and true vertical depths. Give blowout preventer program, if any.

## 24.

SIGNED

Jerry McHugh

TITLE

Landman

DATE 11-15-82

(This space for Federal or State office use)

PERMIT NO.

APPROVAL DATE

APPROVED BY

TITLE

CONDITIONS OF APPROVAL, IF ANY:

APPROVED  
AS AMENDED  
DATE

NOV 29 1982

JAMES F. SIMS  
DISTRICT ENGINEER

NMRB

**NEW MEXICO OIL CONSERVATION COMMISSION  
WELL LOCATION AND ACREAGE DEDICATION PLAT**

Form C-102  
Supersedes C-128  
Effective 1-1-65

All distances must be from the outer boundaries of the Section.

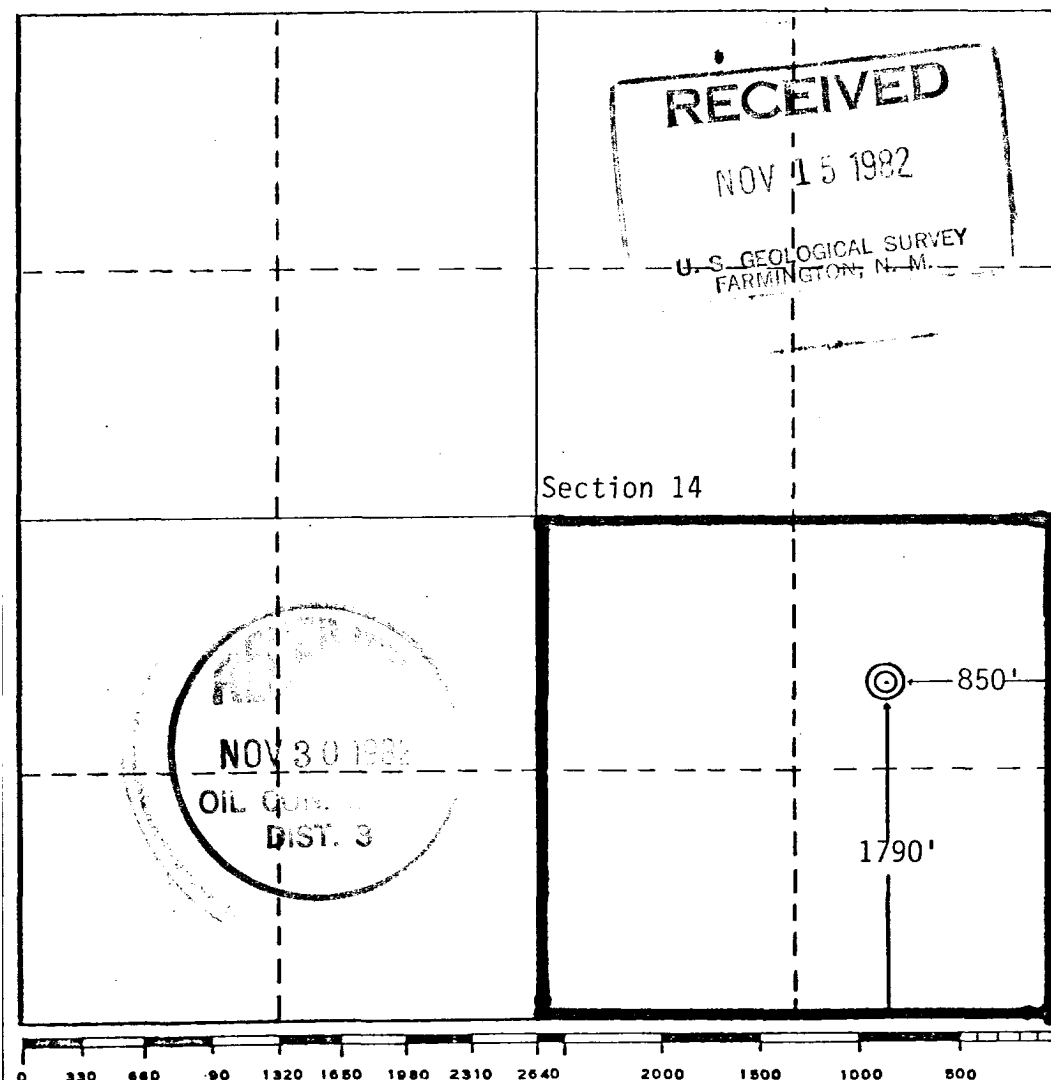
Operator <b>DUGAN PRODUCTION CORP.</b>			Lease <b>Grover</b>		Well No. <b>2</b>
Unit Letter <b>I</b>	Section <b>14</b>	Township <b>24 North</b>	Range <b>11 West</b>	County <b>San Juan</b>	
Actual Footage Location of Well: <b>1790'</b> feet from the <b>South</b> line and <b>850'</b> feet from the <b>East</b> line					
Ground Level Elev. <b>6493</b>	Producing Formation <b>Pictured Cliffs</b>	Pool <b>WC Undesignated Pictured Cliffs</b>		Dedicated Acreage: <b>160</b> Acres	

1. Outline the acreage dedicated to the subject well by colored pencil or hachure marks on the plat below.
2. If more than one lease is dedicated to the well, outline each and identify the ownership thereof (both as to working interest and royalty).
3. If more than one lease of different ownership is dedicated to the well, have the interests of all owners been consolidated by communitization, unitization, force-pooling, etc?

☐ Yes    ☐ No    If answer is "yes," type of consolidation \_\_\_\_\_

If answer is "no," list the owners and tract descriptions which have actually been consolidated. (Use reverse side of this form if necessary.) \_\_\_\_\_

No allowable will be assigned to the well until all interests have been consolidated (by communitization, unitization, forced-pooling, or otherwise) or until a non-standard unit, eliminating such interests, has been approved by the Commission.



**CERTIFICATION**

*I hereby certify that the information contained herein is true and complete to the best of my knowledge and belief.*

*Jerry McHugh*  
Name  
**Jerry McHugh**

Position  
**Landman**

Company  
**Dugan Production Corp.**

Date  
**11-12-82**

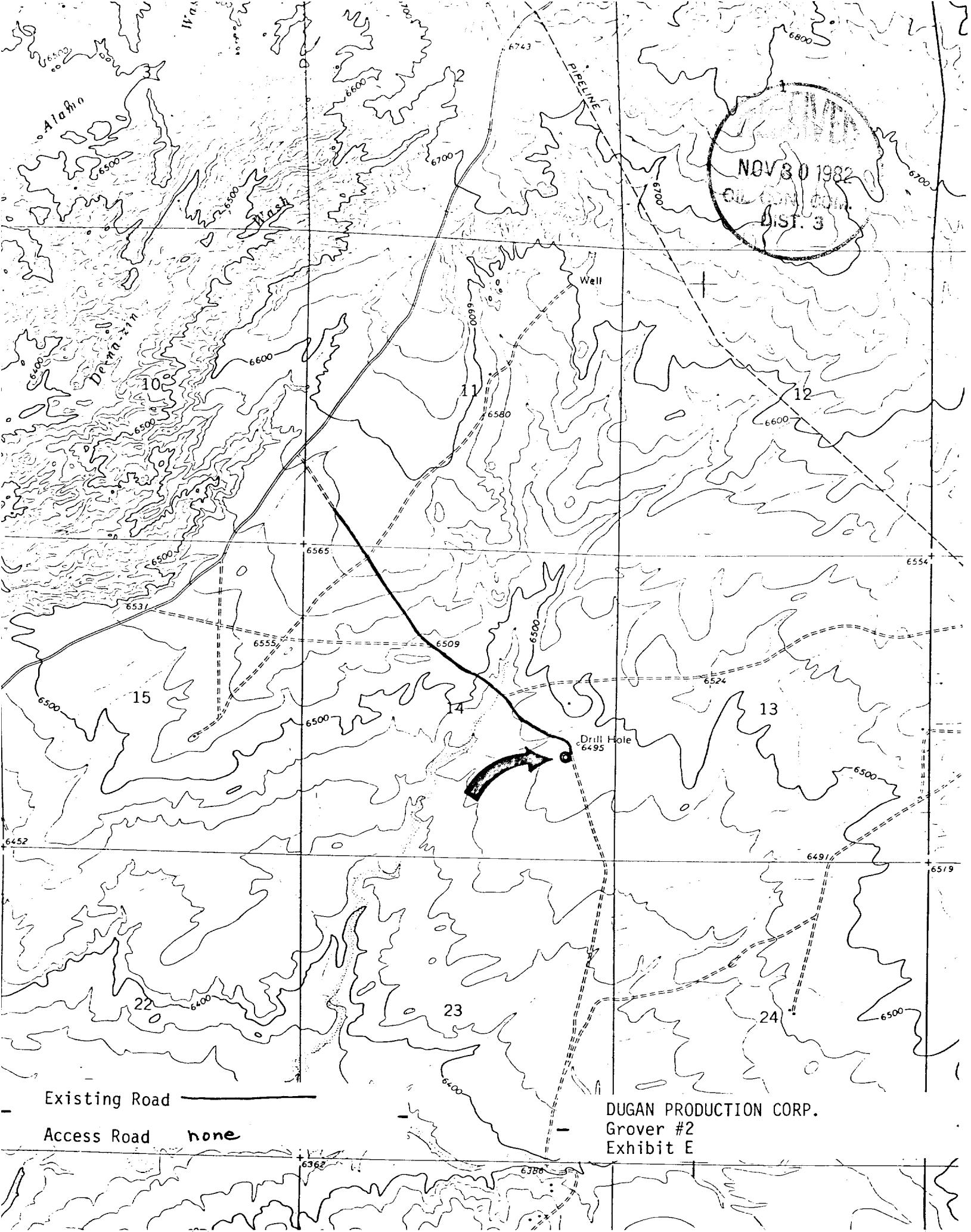
*I hereby certify that the well location shown on this plat was plotted from field notes of actual surveys made by me or under my supervision, and that the same is true and correct to the best of my knowledge and belief.*

**11-12-82**  
Date Surveyed

Registered Professional Engineer  
and/or Land Surveyor

*Thomas A. Dugan*

Certificate No. **2373**  
**Thomas A. Dugan, P.E./L.S.**



NOV 30 1982  
OIL CON. COM.  
DIST. 3

Existing Road

Access Road none

DUGAN PRODUCTION CORP.  
Grover #2  
Exhibit E