

UNITED STATES
DEPARTMENT OF THE INTERIOR
GEOLOGICAL SURVEY

APPLICATION FOR PERMIT TO DRILL, DEEPEN, OR PLUG BACK

1a. TYPE OF WORK

DRILL ☒DEEPEN ☐PLUG BACK ☐

b. TYPE OF WELL

OIL
WELL ☐GAS
WELL ☒

OTHER

SINGLE
ZONE ☐MULTIPLE
ZONE ☐

2. NAME OF OPERATOR

Dugan Production Corp.

3. ADDRESS OF OPERATOR

P O Box 208, Farmington, NM 87499

4. LOCATION OF WELL (Report location clearly and in accordance with any State requirements.)*

At surface 1750' FNL - 830' FEL

At proposed prod. zone

14. DISTANCE IN MILES AND DIRECTION FROM NEAREST TOWN OR POST OFFICE*

7 miles Southwest of Blanco Trading Post

15. DISTANCE FROM PROPOSED*

LOCATION TO NEAREST
PROPERTY OR LEASE LINE, FT.
(Also to nearest drlg. unit line, if any)

830' FEL

18. DISTANCE FROM PROPOSED LOCATION*
TO NEAREST WELL, DRILLING, COMPLETED,
OR APPLIED FOR, ON THIS LEASE, FT.1/2 mi. East in
Sec. 35/ Kirby
Exploration

21. ELEVATIONS (Show whether DF, RT, GR, or other)

6762' GL; 6774 RKB

23.

DRILLING OPERATIONS AUTHORIZED ARE
SUBJECT TO COMPLIANCE WITH ATTACHED
"GENERAL REQUIREMENTS"

| SIZE OF HOLE | SIZE OF CASING | WEIGHT PER FOOT | SETTING DEPTH | QUANTITY OF CEMENT |
|--------------|----------------|-----------------|---------------|-------------------------------|
| 12-1/4" | 8-5/8" | 24# | 200' | 160 cf circulated to surface |
| 7-7/8" | 4-1/2" | 10.5# | 6100' | 1838 cf circulated to surface |

Plan to drill a 12 1/4" hole to 200', set 8-5/8" surface casing cemented to surface, then plan to drill 7-7/8" hole to total depth of 6100, log well, run and cement 4 1/2" casing in two stages circulated to surface. Will then selectively perforate Dakota intervals, test, frac and clean out well. Tubing will then be run and well completed.

GAS IS NOT DEDICATED.

RECEIVED

JUL 24 1984

OIL CON. DIV.

DIST. 3

IN ABOVE SPACE DESCRIBE PROPOSED PROGRAM: If proposal is to deepen or plug back, give data on present productive zone and proposed new productive zone. If proposal is to drill or deepen directionally, give pertinent data on subsurface locations and measured and true vertical depths. Give blowout preventer program, if any.

24.

SIGNED

Sherman E. Dugan
Sherman E. Dugan

TITLE

Geologist

(This space for Federal or State office use)

PERMIT NO.

APPROVAL DATE

APPROVED BY

TITLE

CONDITIONS OF APPROVAL, IF ANY:

APPROVED-84

AS AMENDED

JUL 20 1984

DATE

*See Instructions On Reverse Side

NMUCC

All distances must be from the outer boundaries of the Section.

| | | | | |
|---|--------------------------------------|-----------------------------|--|---------------------------|
| Operator Dugan Production Corporation | | Lease Gold Medal | | Well No. 1 |
| Unit Letter H | Section 34 | Township 24 North | Range 10 West | County San Juan |
| Actual Postage Location of Well: 1750 feet from the North line and 830 feet from the East line | | | | |
| Ground Level Elev. 6762 | Producing Formation Dakota | Pool Basin Dakota | Dedicated Acreage: 320 Acres | |

1. Outline the acreage dedicated to the subject well by colored pencil or hatchure marks on the plat below.
2. If more than one lease is dedicated to the well, outline each and identify the ownership thereof (both as to working interest and royalty).
3. If more than one lease of different ownership is dedicated to the well, have the interests of all owners been consolidated by communitization, unitization, force-pooling, etc?

☐ Yes ☐ No If answer is "yes," type of consolidation _____

If answer is "no," list the owners and tract descriptions which have actually been consolidated. (Use reverse side of this form if necessary.) _____

No allowable will be assigned to the well until all interests have been consolidated (by communitization, unitization, forced-pooling, or otherwise) or until a non-standard unit, eliminating such interests, has been approved by the Division.

| | | | |
|--|--|--|--|
| | | | |
| | | | |

CERTIFICATION

I hereby certify that the information contained herein is true and complete to the best of my knowledge and belief.

Sherman E. Dugan
 Name

Sherman E. Dugan

 Position
 Geologist

 Company
 Dugan Production Corp.

 Date
 6-28-84

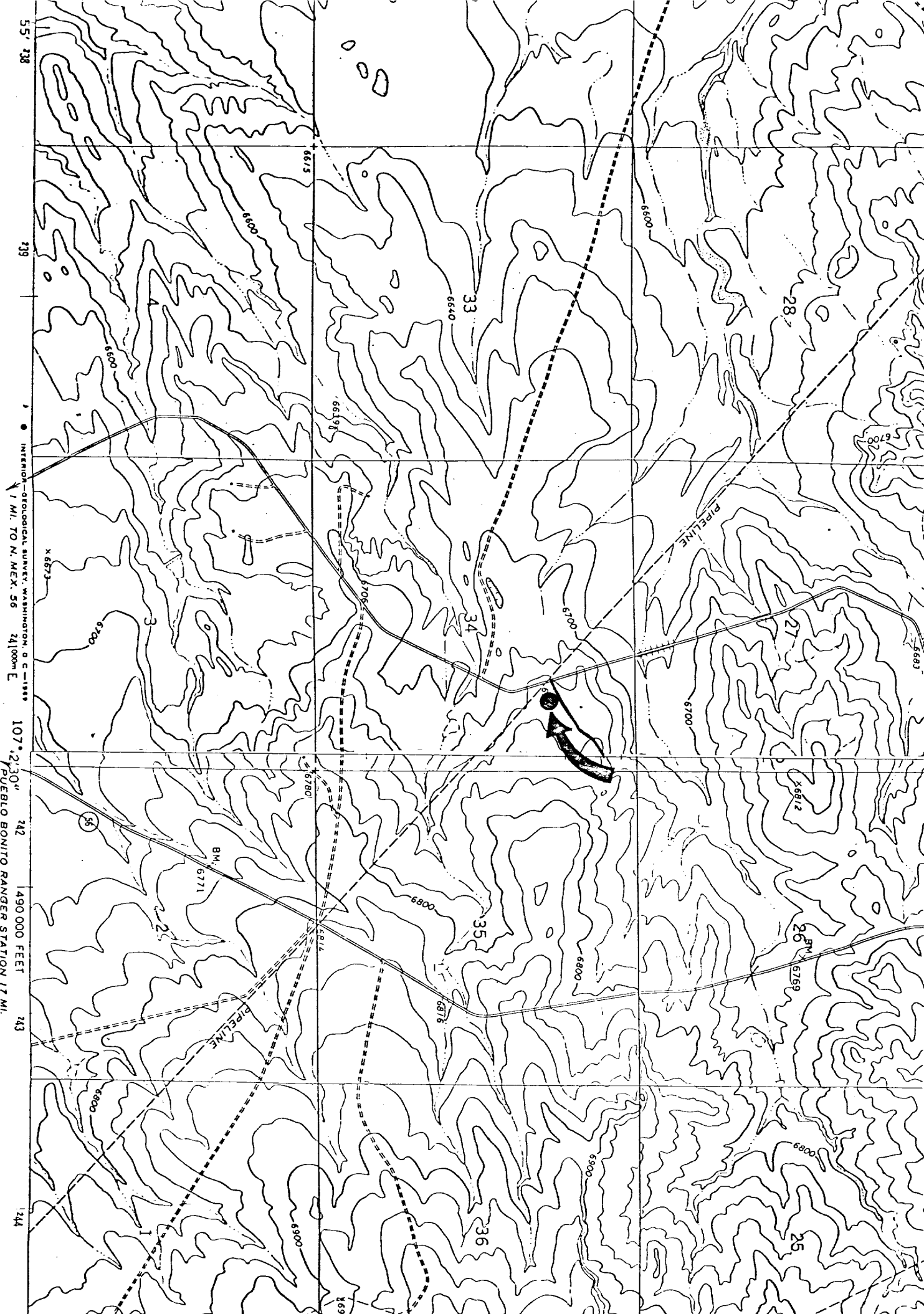
I hereby certify that the location shown on this plat is correct to the best of my knowledge and belief.

 Date Surveyed
 April 6, 1984

 Registered Professional Engineer
 and/or Land Surveyor

Edgar L. Risenhoover
 Certificate No. 5979
 Edgar L. Risenhoover, L.S.

Control by USGS and USC&GS



NO
ACCESS ROAD
REQUIRED