

6 BLM 1 File  
UNITED STATES  
DEPARTMENT OF THE INTERIOR  
GEOLOGICAL SURVEYSUBMIT IN TRIPLICATE  
(Other instructions on  
reverse side)Form approved.  
Budget Bureau No. 42-R1425.

5. LEASE DESIGNATION AND SERIAL NO.

NM 22044

6. IF INDIAN, ALLOTTEE OR TRIBE NAME

7. UNIT AGREEMENT NAME

8. FARM OR LEASE NAME

Gold Medal

9. WELL NO.

2

10. FIELD AND POOL, OR WILDCAT

Undesignated Gallup

11. SEC., T., R., M., OR BLM

AND SURVEY OR AREA  
Sec 33, T24N, R10W, NMPM

12. COUNTY OR PARISH

San Juan

13. STATE

NM

## 1a. TYPE OF WORK

DRILL ☒DEEPEN ☐PLUG BACK ☐

## b. TYPE OF WELL

OIL  
WELL ☒GAS  
WELL ☐

OTHER

SINGLE  
ZONE ☒MULTIPLE  
ZONE ☐

## 2. NAME OF OPERATOR

DUGAN PRODUCTION CORP.

## 3. ADDRESS OF OPERATOR

P O Box 208, Farmington, NM 87499

## 4. LOCATION OF WELL (Report location clearly and in accordance with any State requirements.)

At surface

1980' FSL - 1980' FWL

At proposed prod. zone

RECEIVED

AUG 0 9 1985

## 14. DISTANCE IN MILES AND DIRECTION FROM NEAREST TOWN OR POST OFFICE\*

7 miles SW of Blanco Trading Post

## 15. DISTANCE FROM PROPOSED\*

1980'

LOCATION TO NEAREST

PROPERTY OR LEASE LINE, FT.

(Also to nearest drlg. unit line, if any)

## 16. NO. OF ACRES IN LEASE

1594.40

## 17. NO. OF ACRES ASSIGNED

TO THIS WELL

40

18. DISTANCE FROM PROPOSED LOCATION\* approx. 3700' to  
TO NEAREST WELL, DRILLING, COMPLETED,  
OR APPLIED FOR, ON THIS LEASE, FT. DPC's Marathon #1

## 19. PROPOSED DEPTH

4870'

## 20. ROTARY OR CABLE TOOLS

Rotary

## 21. ELEVATIONS (Show whether DF, RT, GR, etc.)

6640' GL

DRILLING OPERATIONS AUTHORIZED ARE

SUBJECT TO COMPLIANCE WITH ATTACHED

"GENERAL REQUIREMENTS"

PROPOSED CASING AND CEMENTING PROGRAM

## 22. APPROX. DATE WORK WILL START\*

ASAP

## 23.

SIZE OF HOLE	SIZE OF CASING	WEIGHT PER FOOT	SETTING DEPTH
12-1/4"	8-5/8"	24#	200'
7-7/8"	4-1/2"	10.5#	4870'

This action is subject to technical and  
precedent review pursuant to 33 CFR 3165.3  
and appeal pursuant to 43 CFR 3165.4.

150 cf circ. to surface

1260 cf circ. to surface

Plan to drill a 12-1/4" hole and set 200' of 8-5/8" OD, 24#, J-55 surface casing; then plan to drill a 7-7/8" hole to total depth with gel-water-mud program to test the Gallup formation. Plan to run IES and CDL logs. If deemed productive, will run 4-1/2", 10.5#, J-55 casing, selectively perforate, frac, clean out after frac, and complete well.

RECEIVED

AUG 28 1985

OIL CON. DIV  
DIST. 3

IN ABOVE SPACE DESCRIBE PROPOSED PROGRAM: If proposal is to deepen or plug back, give data on present productive zone and proposed new productive zone. If proposal is to drill or deepen directionally, give pertinent data on subsurface locations and measured and true vertical depths. Give blowout preventer program, if any.

## 24.

SIGNED

Sherman E. Dugan  
Sherman E. Dugan

TITLE

Geologist

DATE

8-6-85

(This space for Federal or State office use)

PERMIT NO.

APPROVAL DATE

APPROVED BY

TITLE

CONDITIONS OF APPROVAL, IF ANY:

APPROVED  
AS AMENDED

AUG 23 1985

\*See Instructions On Reverse Side

NMOCC

Stan McKee  
M. MILLENBACH  
AREA MANAGER

## OIL CONSERVATION DIVISION

STATE OF NEW MEXICO  
ENERGY AND MINERALS DEPARTMENTP. O. BOX 2088  
SANTA FE, NEW MEXICO 87501Form C-102  
Revised 10-1-78

All distances must be from the outer boundaries of the Section.

Operator Dugan Production Corporation		Lease Gold Medal		Well No. 2
Unit Letter K	Section 33	Township 24 North	Range 10 West	County San Juan
Actual Footage Location of Wells 1980 feet from the South line and 1980 feet from the West line				
Ground Level Elev. 6640	Producing Formation Gallup		Pool Undesignated Gallup	Dedicated Acreage: 40 Acres

1. Outline the acreage dedicated to the subject well by colored pencil or hatchure marks on the plat below.
2. If more than one lease is dedicated to the well, outline each and identify the ownership thereof (both as to working interest and royalty).
3. If more than one lease of different ownership is dedicated to the well, have the interests of all owners been consolidated by communitization, unitization, force-pooling, etc?

☐ Yes ☐ No If answer is "yes," type of consolidation \_\_\_\_\_

If answer is "no," list the owners and tract descriptions which have actually been consolidated. (Use reverse side of this form if necessary.) \_\_\_\_\_

No allowable will be assigned to the well until all interests have been consolidated (by communitization, unitization, forced-pooling, or otherwise) or until a non-standard unit, eliminating such interests, has been approved by the Division.

RECEIVED

AUG 09 1985

SEC. 33

Dugan Prod.  
NM 22044

1980

1980

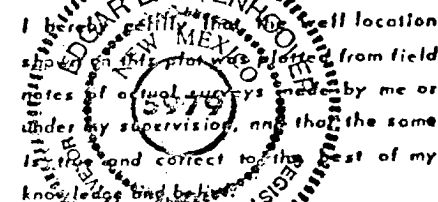
RECEIVED

AUG 28 1985

OIL CON. DIV  
DIST. 2

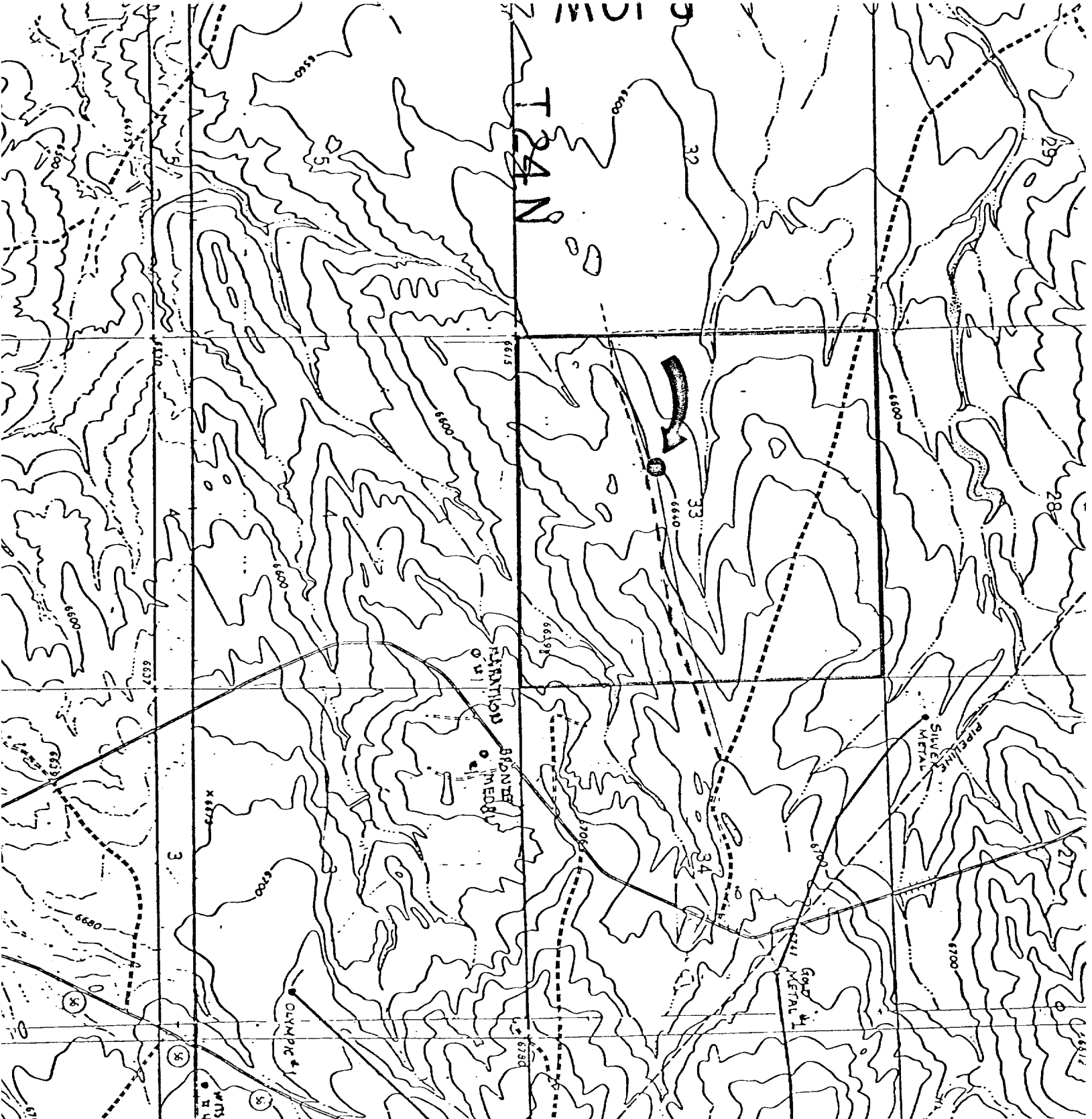
## CERTIFICATION

I hereby certify that the information contained herein is true and complete to the best of my knowledge and belief.

Name  
Sherman E. DuganPosition  
GeologistCompany  
Dugan Production Corp.Date  
8-6-85

I hereby certify that the well location shown on this plat was plotted from field notes of actual surveys made by me or under my supervision, and that the same is true and correct to the best of my knowledge and belief.

Date Surveyed  
July 30, 1985Registered Professional Engineer  
and/or Land Surveyor  
Certificate No. 5579



DUGAN PRODUCTION CORP. - Gold Medal #2  
 Existing Roads                      Exhibit E

Distance from nearest town or reference pt.  
7 miles SW of Blanco Trading Post

Type of surface dirt

Conditions good

Other 1900' of existing 2-track to be rehab-  
itated. 20' Wide - maximum grades 1%.  
No cuts & fills. No drainage design

DUGAN PRODUCTION CORP. - Gold Medal #2  
 Planned Access Road(s)                      Exhibit E

Width                      Maximum grades                     

Drainage design                     

Cuts & Fills                     

Surfacing material                     

☒ Turnouts

☒ Culverts

☒ Gates

☒ Cattleguards

☒ Fence cuts

NOT REQUIRED