

UNITED STATES  
DEPARTMENT OF THE INTERIOR  
BUREAU OF LAND MANAGEMENT

APPLICATION FOR PERMIT TO DRILL, DEEPEN, OR PLUG BACK

1a. TYPE OF WORK

DRILL ☒

DEEPEN ☐

PLUG BACK ☐

b. TYPE OF WELL

OIL  
WELL ☒

GAS  
WELL ☐

OTHER

SINGLE  
ZONE ☒

MULTIPLE  
ZONE ☐

2. NAME OF OPERATOR

Merrion Oil & Gas Corporation

3. ADDRESS OF OPERATOR

P. O. Box 840, Farmington, New Mexico 87499

4. LOCATION OF WELL (Report location clearly and in accordance with any State requirements)

At surface

940' FSL and 790' FEL

At proposed prod. zone

Same

AUG 09 1985

14. DISTANCE IN MILES AND DIRECTION FROM NEAREST TOWN OR POST OFFICE\*

approximately 16 miles North of Lybrook

15. DISTANCE FROM PROPOSED\*

LOCATION TO NEAREST  
PROPERTY OR LEASE LINE, FT.  
(Also to nearest drlg. unit line, if any)

790

16. NO. OF ACRES IN LEASE

810.91

17. NO. OF ACRES ASSIGNED  
TO THIS WELL

5/80

18. DISTANCE FROM PROPOSED LOCATION\*  
TO NEAREST WELL, DRILLING, COMPLETED,  
OR APPLIED FOR, ON THIS LEASE, FT.

5280'

19. PROPOSED DEPTH

6140

20. ROTARY OR CABLE TOOLS

0 - TD

21. ELEVATIONS (Show whether DF, RT, GR, etc.)

7178 GL

DRILLING OPERATIONS AUTHORIZED ARE

SUBJECT TO COMPLIANCE WITH ATTACHED

"GENERAL REQUIREMENTS"

22. APPROX. DATE WORK WILL START\*

Summer/1985

23. PROPOSED CASING AND CEMENTING PROGRAM

This action is subject to technical and  
procedural review pursuant to 43 CFR 3165.3  
and appeal pursuant to 43 CFR 3165.4.

SIZE OF HOLE	SIZE OF CASING	WEIGHT PER FOOT	SETTING DEPTH	QUANTITY OF CEMENT
12-1/4"	8-5/8", J-55	24 #/ft.	200'	175 sx (206.5 Class B 3% CaCl2
7-7/8"	4-1/2", J-55	10.5 #/ft.	6140	as below

Will drill 12-1/4" surface hole to 200 ft. and set 200 ft. of 8-5/8" 24 #/ft. J-55 grade casing with 175 sx Class B cement with 3% CaCl2. Will drill 7-7/8" hole to 6140 ft. Will run open hole logs. No other testing planned. If well appears productive, will run 6140 ft. of 4-1/2", 10.5 #/ft. J-55 grade casing and stage cement. First stage will cement with 250 sx Class H 2% gel (1.22 cu. ft/sk. yield) 305 cu. ft. cement to cover Gallup interval from TD. Estimated top of cement is 5050 ft. Will set stage collar at approximately 4900 ft., below Point Lookout Formation. Second stage will cement with 700 sx Class B 2% D-79 (2.06 cu. ft/sk.) followed by 50 sx Class H 2% Gel (1.22 cu. ft/sk) 61 cu. ft. to cover Mesaverde, Chacra, Pictured Cliffs, Fruitland and Ojo Alamo. Top of cement will be at surface.

Drilling circulating medium will be low solids, non-dispersed, low water loss mud using bentonite, starch, CMC and fresh water.

Minimum specifications for pressure control is 10" 900 series double ram blow

out preventer. Will perforate and stimulate as required for completion.

IN ABOVE SPACE DESCRIBE PROPOSED PROGRAM: If proposal is to deepen or plug back, give data on present productive zone and proposed new productive zone. If proposal is to drill or deepen directionally, give pertinent data on subsurface locations and measured and true vertical depths. Give blowout preventer program, if any.

24.

SIGNED

Operations Manager

DATE 8/6/85

(This space for Federal or State Office Use)

PERMIT NO.

APPROVAL DATE

APPROVED  
AS AMENDED

APPROVED BY

CONDITIONS OF APPROVAL, IF ANY:

OIL CON. DIV

DIST. 3

NMOCC

DATE AUG 29 1985

Stan McKee

M. MILLENBACH  
AREA MANAGER

\*See Instructions On Reverse Side

NEW MEXICO OIL CONSERVATION COMMISSION  
WELL LOCATION AND ACREAGE DEDICATION PLAT

Form 1-102  
Supersedes 1-128  
Effective 1-1-55

All distances must be from the outer boundaries of the Section

Operator <b>MERRION OIL &amp; GAS CORPORATION</b>			Lease <b>FEDERAL "A"</b>		Well No. <b>2</b>
Unit Letter <b>P</b>	Section <b>11</b>	Township <b>24N</b>	Range <b>8W</b>	County <b>San Juan</b>	
Actual Footage Location of Well:					
<b>940</b>	feet from the <b>South</b>	line and	<b>790</b>	feet from the <b>East</b>	line
Ground Level Elev: <b>7178</b>	Producing Formation <b>Gallup</b>		Pool <b>Escrito Gallup</b>	Dedicated Acreage <b>80</b> Acres	

1. Outline the acreage dedicated to the subject well by colored pencil or hachure marks on the plat below.
2. If more than one lease is dedicated to the well, outline each and identify the ownership thereof (both as to working interest and royalty).
3. If more than one lease of different ownership is dedicated to the well, have the interests of all owners been consolidated by communitization, unitization, force-pooling, etc?

☐ Yes ☐ No If answer is "yes," type of consolidation \_\_\_\_\_

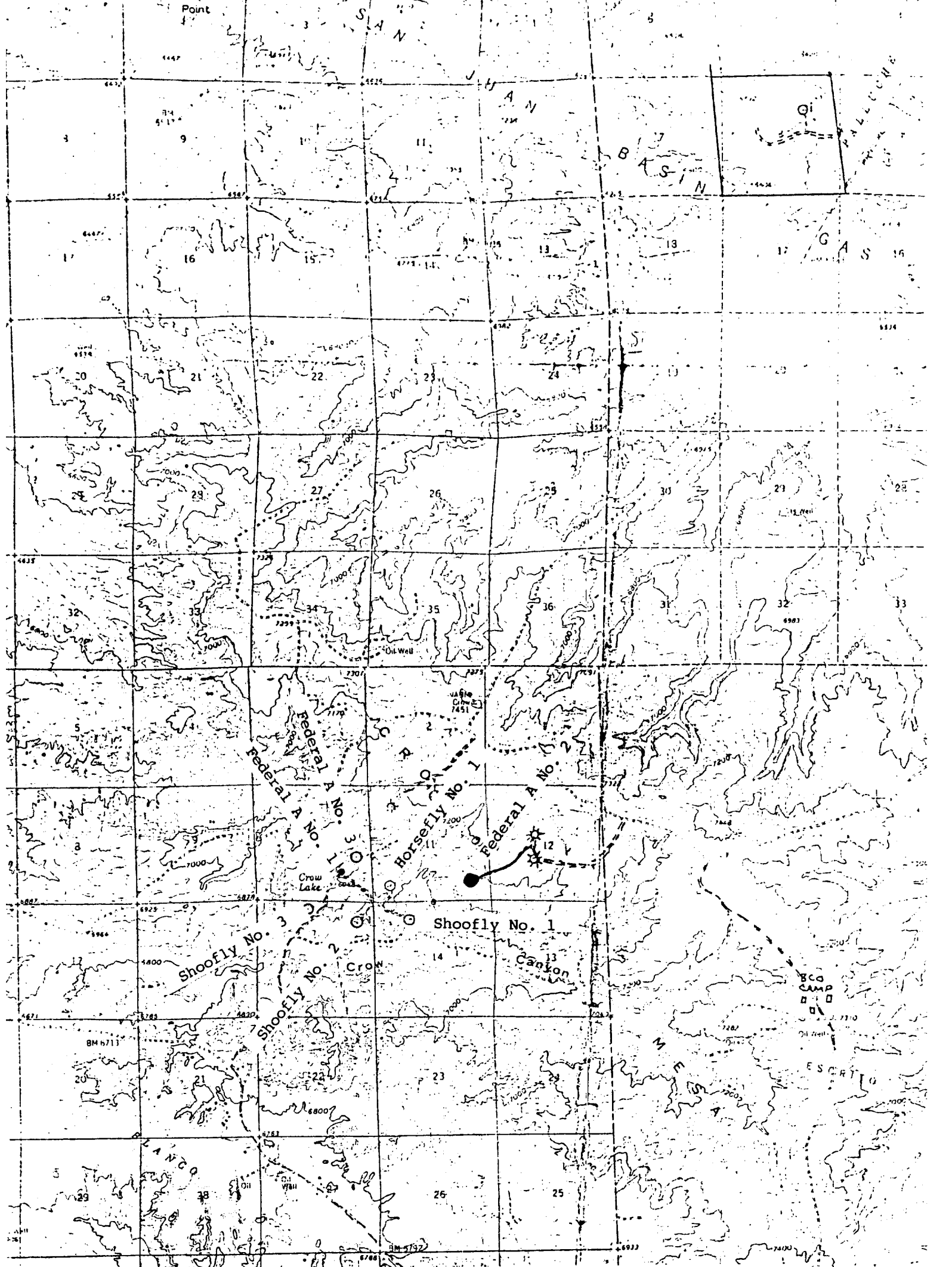
If answer is "no," list the owners and tract descriptions which have actually been consolidated. (Use reverse side of this form if necessary.) \_\_\_\_\_

No allowable will be assigned to the well until all interests have been consolidated (by communitization, unitization, forced-pooling, or otherwise) or until a non-standard unit, eliminating such interests, has been approved by the Commission.

Sec.	11	<b>RECEIVED</b> <b>SEP 12 1985</b> <b>BUREAU OF LAND MANAGEMENT</b> <b>FARMINGTON RESOURCE AREA</b>
		<b>RECEIVED</b> <b>SEP 18 1985</b> <b>OIL CON. DIV.</b> <b>DIST. 3</b> <b>NM 014580A</b>

Scale: 1"=1000'

<b>CERTIFICATION</b>	
I hereby certify that the information contained herein is true and complete to the best of my knowledge and belief.	
Name	<b>Steve S. Dunn</b>
Position	<b>Operations Manager</b>
Company	<b>Merrion Oil &amp; Gas Corporation</b>
Date	<b>9/10/85</b>
I hereby certify that the well location shown on this plat was plotted from field notes of actual surveys made by me or under my supervision, and that the same is true and correct to the best of my knowledge and belief.	
Date Surveyed	<b>July 25, 1985</b>
Registered Professional Engineer and Land Surveyor	
Certificate No.	<b>3750</b>



Vicinity Map for  
MERRION OIL & GAS CORP. #2 FEDERAL "A"  
940'FSL 790'FEL Sec. 11-T24N-R8W  
SAN JUAN COUNTY, NEW MEXICO