

UNITED STATES
DEPARTMENT OF THE INTERIOR
GEOLOGICAL SURVEY

30-045-26779

APPLICATION FOR PERMIT TO DRILL, DEEPEN, OR PLUG BACK

1a. TYPE OF WORK

DRILL ☒DEEPEN ☐PLUG BACK ☐

b. TYPE OF WELL

OIL
WELL ☒GAS
WELL ☐

OTHER

SINGLE
ZONE ☒MULTIPLE
ZONE ☐

2. NAME OF OPERATOR

DUGAN PRODUCTION CORP.

3. ADDRESS OF OPERATOR

P O Box 208, Farmington, NM 87499

4. LOCATION OF WELL (Report location clearly and in accordance with any State requirements*)

At surface

660' FSL - 810' FWL

At proposed prod. zone

RECEIVED

MAR 30 1987

BUREAU OF LAND MANAGEMENT
FARMINGTON RESOURCE AREA

14. DISTANCE IN MILES AND DIRECTION FROM NEAREST TOWN OR POST OFFICE

approx. 8 1/2 miles southwest of Bisti Trading Post

15. DISTANCE FROM PROPOSED*

LOCATION TO NEAREST
PROPERTY OR LEASE LINE, FT.
(Also to nearest drlg. unit line, if any)

660'

16. NO. OF ACRES IN LEASE

1594.4

17. NO. OF ACRES ASSIGNED
TO THIS WELL

5.80

18. DISTANCE FROM PROPOSED LOCATION*

TO NEAREST WELL, DRILLING, COMPLETED
OR APPLIED FOR, ON THIS LEASE, FT.

approx. 1760'

to DPC's Gold

19. PROPOSED DEPTH

4830'

20. ROTARY OR CABLE TOOLS

Rotary

21. ELEVATIONS (Show whether DF, RT, or both)

6620' GL; 6632' RKB

This action is subject to technical and
procedural review pursuant to 43 CFR 3165.1
and appeal pursuant to 43 CFR 3165.4

22. APPROX. DATE WORK WILL START*

23.

PROPOSED CASING AND CEMENTING PROGRAM

DRILLING OPERATIONS AUTHORIZED ARE
SUBJECT TO COMPLIANCE WITH ATTACHED
"GENERAL REQUIREMENTS"

SIZE OF HOLE	SIZE OF CASING	WEIGHT PER FOOT	SETTING DEPTH
12 1/4"	8-5/8"	24#	200'
7-7/8"	4-1/2"	10.5#	4830'

159 cf circ. to surface
1524 cf circ. to surface

Plan to drill a 12-1/4" hole and set 200' of 8-5/8" OD, 24#, J-55 surface casing; then plan to drill a 7-7/8" hole to total depth with gel-water-mud program to test Gallup formation. Plan to run IES and CDL logs. If determined productive will run 4-1/2", 10.5#, J-55 casing, selectively perforate, frac, clean out after frac and complete well.

Gas is dedicated.

RECEIVED
APR 08 1987

OIL CON. DIV.

IN ABOVE SPACE DESCRIBE PROPOSED PROGRAM: If proposal is to deepen or plug back, give data on present productive zone and proposed new productive zone. If proposal is to drill or deepen directionally, give pertinent data on subsurface locations and measured and true vertical depths. Give blowout preventer program, if any.

24.

SIGNED

Sherman E. Dugan

TITLE

Geologist

DATE

3-30-87

(This space for Federal or State office use)

PERMIT NO.

APPROVAL DATE

APPROVED
AS AMENDED

APPROVED BY

TITLE

DATE

APR 06 1987

"Approval of this action does
not warrant that the applicant
holds legal or equitable rights
or title to this lease."

NMOCC

*See Instructions On Reverse Side

APR 06 1987
John Keller
AREA MANAGER

OIL CONSERVATION DIVISION

STATE OF NEW MEXICO
ENERGY AND MINERALS DEPARTMENTP. O. BOX 2088
SANTA FE, NEW MEXICO 87501Form C-102
Revised 10-1-78

All distances must be from the outer boundaries of the Section.

Operator Dugan Production Corporation			Lease Gold Medal		Well No. 4
Section M	Section 33	Township 24 North	Range 10 West	County San Juan	
Actual Footage Location of Well: 660 feet from the South line and 810 feet from the West line					
Sound Level Elev. 6620	Producing Formation Gallup	Pool South Bisti Gallup		Dedicated Acreage: 80 Acres	

1. Outline the acreage dedicated to the subject well by colored pencil or hachure marks on the plat below.
2. If more than one lease is dedicated to the well, outline each and identify the ownership thereof (both as to working interest and royalty).
3. If more than one lease of different ownership is dedicated to the well, have the interests of all owners been consolidated by communitization, unitization, force-pooling, etc?

☐ Yes ☐ No If answer is "yes," type of consolidation _____

If answer is "no," list the owners and tract descriptions which have actually been consolidated. (Use reverse side of this form if necessary.) _____

No allowable will be assigned to the well until all interests have been consolidated (by communitization, unitization, forced-pooling, or otherwise) or until a non-standard unit, eliminating such interests, has been approved by the Division.

RECEIVED APR 13 1987 BUREAU OF LAND MANAGEMENT FARMINGTON RESOURCE AREA		SEC. 33	
Dugan Prod. s. #NM 22044		660'	

CERTIFICATION.

I hereby certify that the information contained herein is true and complete to the best of my knowledge and belief.

Name
Jim L. Jacobs

Position
Geologist.

Company
Dugan Production Corp.

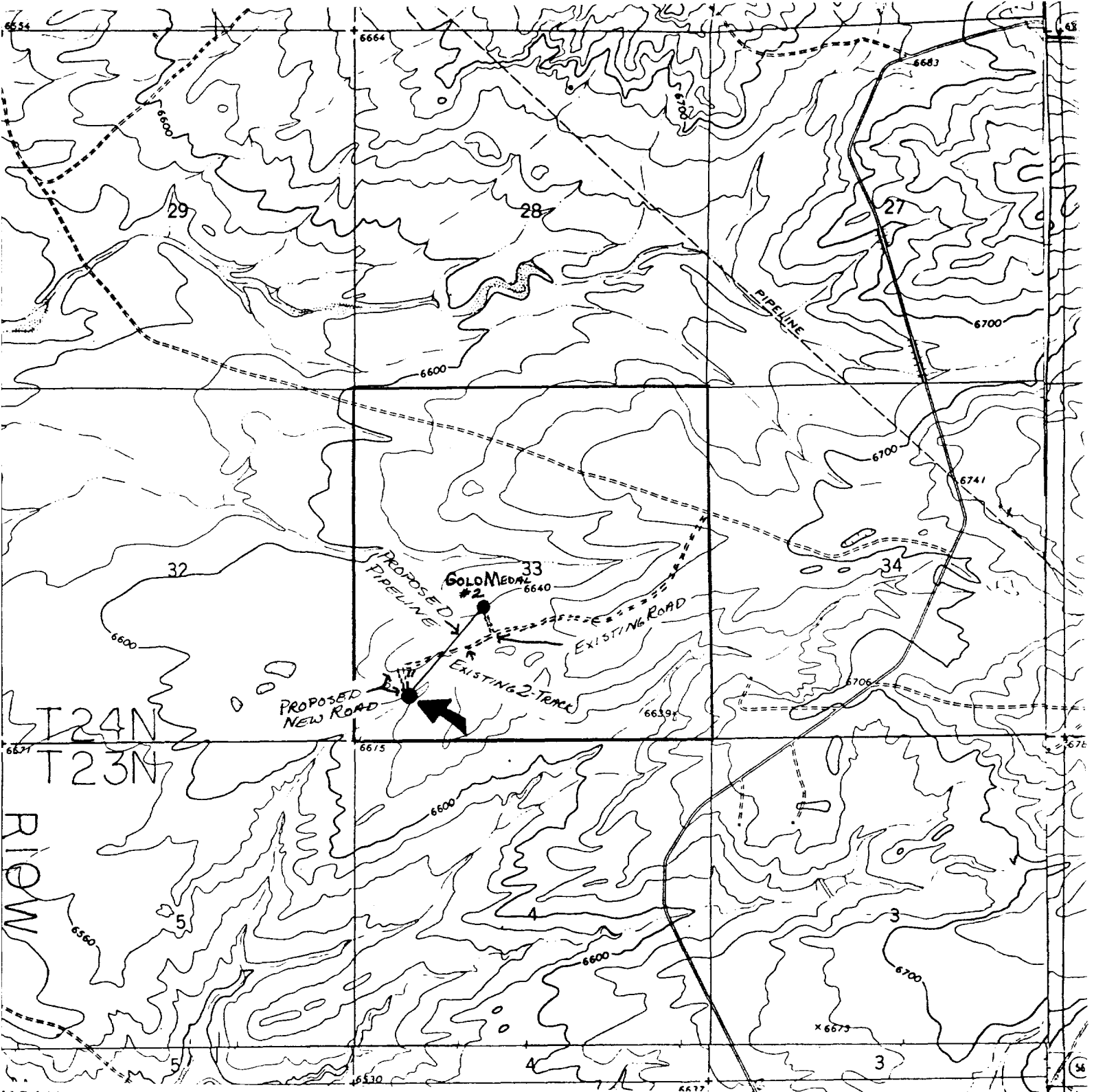
Date
4-10-87

EDGAR L. RISENHOWER
REGISTERED LAND SURVEYOR
NEW MEXICO
5979
I hereby certify that the well location shown on this plat was plotted from field notes of 5979 survey made by me or under my supervision, and that the same are true and correct to the best of my knowledge and belief.

Date Surveyed
March 18, 1987

Registered Professional Engineer
and/or Land Surveyor

Edgar L. Risenhower
Certificate No. 5979



DUGAN PRODUCTION CORP. - Gold Medal #4
Existing Roads Exhibit E

Vicinity of nearest town or reference pt.
8½ miles southwest of Bisti Trading Post, NM
(See Exhibit V)

Type of surface dirt

Conditions good

Other

Reference map: USGS map Huerfano Trading
Post SW, 1966 (7.5 minute series, Topographic)

DUGAN PRODUCTION CORP. - Gold Medal #4
Planned Access Road(s) Exhibit E

Width 20' Maximum grades 4%

Drainage design as required

Cuts & Fills see diagram

Surfacing material none

Turnouts

Culverts

Gates

Cattleguards

Fence cuts

Access road(s) do/do not cross Fed/Ind land.