

UNITED STATES
DEPARTMENT OF THE INTERIOR
BUREAU OF LAND MANAGEMENT

APPLICATION FOR PERMIT TO DRILL, DEEPEN, OR PLUG BACK

1a. TYPE OF WORK

DRILL ☒

DEEPEN ☐

PLUG BACK ☐

b. TYPE OF WELL

OIL
WELL ☒

GAS
WELL ☐

OTHER

SINGLE
ZONE ☒

MULTIPLE
ZONE ☐

2. NAME OF OPERATOR

Coleman Oil and Gas

3. ADDRESS OF OPERATOR

P.O. Drawer 3337 Farmington, NM 87499-3337

4. LOCATION OF WELL (Report location clearly and in accordance with any State requirements.)

At surface

2310' FWL and 990' FSL

At proposed prod. zone

14. DISTANCE IN MILES AND DIRECTION FROM NEAREST TOWN OR POST OFFICE*

4 1/2 miles NE of Nageezi, NM

10. DISTANCE FROM PROPOSED*

LOCATION TO NEAREST
PROPERTY OR LEASE LINE, FT.
(Also to nearest drig. unit line, if any)

330'

18. DISTANCE FROM PROPOSED LOCATION*
TO NEAREST WELL, DRILLING, COMPLETED,
OR APPLIED FOR, ON THIS LEASE, FT.

819'

16. NO. OF ACRES IN LEASE

160

19. PROPOSED DEPTH

5600' 5585'

17. NO. OF ACRES ASSIGNED
TO THIS WELL

40

20. ROTARY OR CABLE TOOLS

Rotary

21. ELEVATIONS (Show whether DF, RT, GR, etc.)

6813' GR

22. APPROX. DATE WORK WILL START*

9-15-89

23.

PROPOSED CASING AND CEMENTING PROGRAM

SIZE OF HOLE	SIZE OF CASING	WEIGHT PER FOOT	SETTING DEPTH
12-1/4	8-5/8	24 lbs	200'
7-7/8	4-1/2	10.5 lbs	5585

This action is subject to technical and
operational review pursuant to 43 CFR 3135.3
and 3135.4.

QUANTITY OF CEMENT
155 sks cl aW/27. Cael₂ (183ft³)
2 stages - 1st stage: 270 sks Lite
cem. & 100 sks Cl a cem (575ft³)
2nd stage: 425 sks Lite cem.
(718ft³)

This well will test the Gallup formation.

Onshore Oil and Gas Order No. 1 required information
is attached.

RECEIVED
OCT 11 1989
OIL CON. DIV.
DIST. 3

IN ABOVE SPACE DESCRIBE PROPOSED PROGRAM: If proposal is to deepen or plug back, give data on present productive zone and proposed new productive zone. If proposal is to drill or deepen directionally, give pertinent data on subsurface locations and measured and true vertical depths. Give blowout preventer program, if any.

24.

SIGNED

TITLE Agent

DATE

9-13-89

(This space for Federal or State office use)

APPROVED
AS AMENDED

PERMIT NO.

APPROVAL DATE

APPROVED BY

CONDITIONS OF APPROVAL, IF ANY:

TITLE

DATE

OCT 06 1989

AREA MANAGER

See Instructions On Reverse Side

Submit to Appropriate
District Office
State Lease - 4 copies
Fee Lease - 3 copies

State of New Mexico
Energy, Minerals and Natural Resources Department

Form C-102
Revised 1-1-89

OIL CONSERVATION DIVISION

P.O. Box 2088
Santa Fe, New Mexico 87504-2088

DISTRICT I
P.O. Box 1980, Hobbs, NM 88240

DISTRICT II
P.O. Drawer DD, Artesia, NM 88210

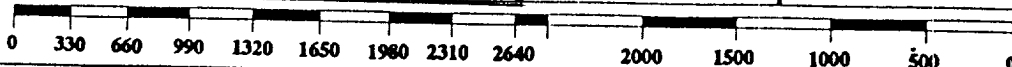
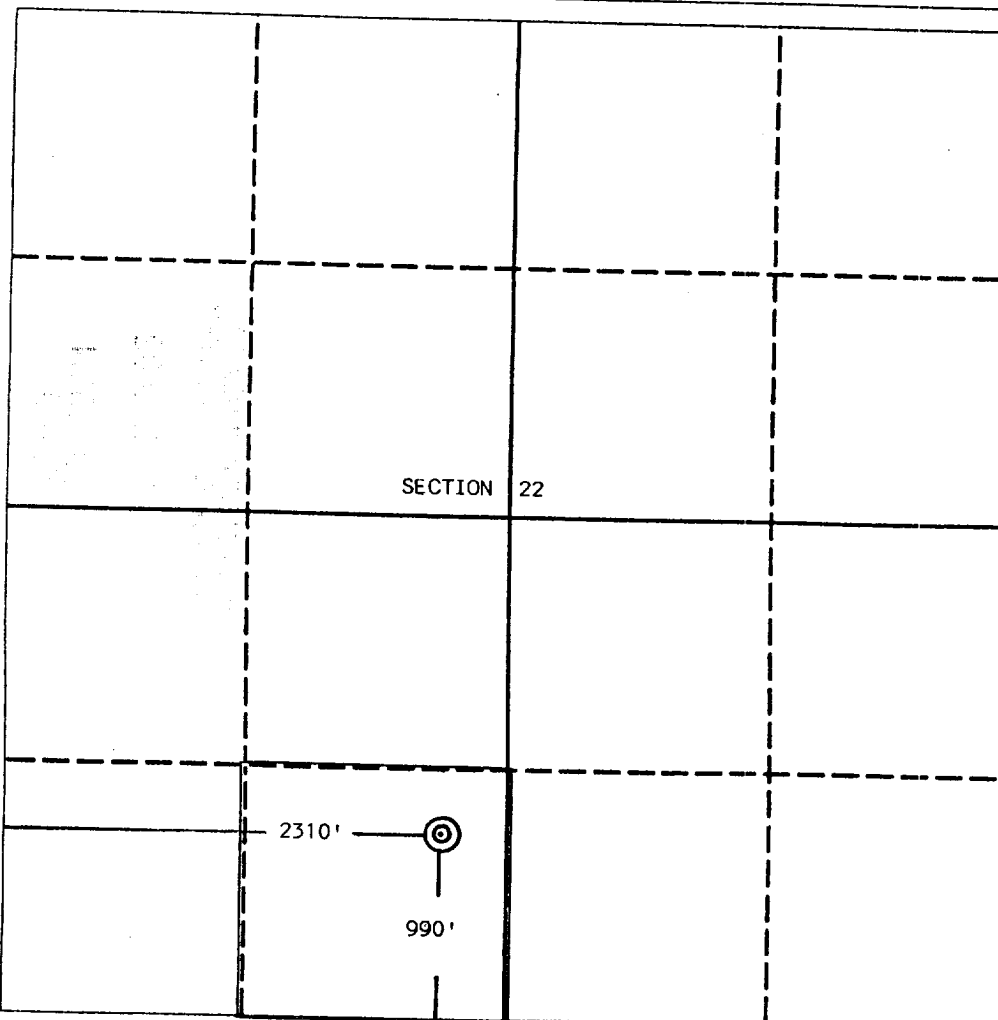
DISTRICT III
1000 Rio Brazos Rd., Aztec, NM 87410

WELL LOCATION AND ACREAGE DEDICATION PLAT

All Distances must be from the outer boundaries of the section

Operator Coleman Oil and Gas Company			Lease Anderson		Well No. 2
Unit Letter N	Section 22	Township 24 North	Range 8 West	County San Juan	
Actual Footage Location of Well: 990 feet from the South line and 2310 feet from the West line					
Ground level Elev. 6813	Producing Formation Gallup		Pool Lybrook Gallup	Dedicated Acreage: 40 Acres	

- Outline the acreage dedicated to the subject well by colored pencil or hatchure marks on the plat below.
- If more than one lease is dedicated to the well, outline each and identify the ownership thereof (both as to working interest and royalty).
- If more than one lease of different ownership is dedicated to the well, have the interest of all owners been consolidated by communitization, unitization, force-pooling, etc.?
☐ Yes ☐ No If answer is "yes" type of consolidation _____
If answer is "no" list the owners and tract descriptions which have actually been consolidated. (Use reverse side of this form if necessary.)
No allowable will be assigned to the well until all interests have been consolidated (by communitization, unitization, forced-pooling, or otherwise) or until a non-standard unit, eliminating such interest, has been approved by the Division.



OPERATOR CERTIFICATION

I hereby certify that the information contained herein is true and complete to the best of my knowledge and belief.

Signature
Printed Name
L.O. Van Ryan
Position
Agent
Company
Coleman Oil & Gas
Date
9-19-89

SURVEYOR CERTIFICATION

I hereby certify that the well location shown on this plat was plotted from field notes of actual surveys made by me or under my supervision, and that the same is true and correct to the best of my knowledge and belief.

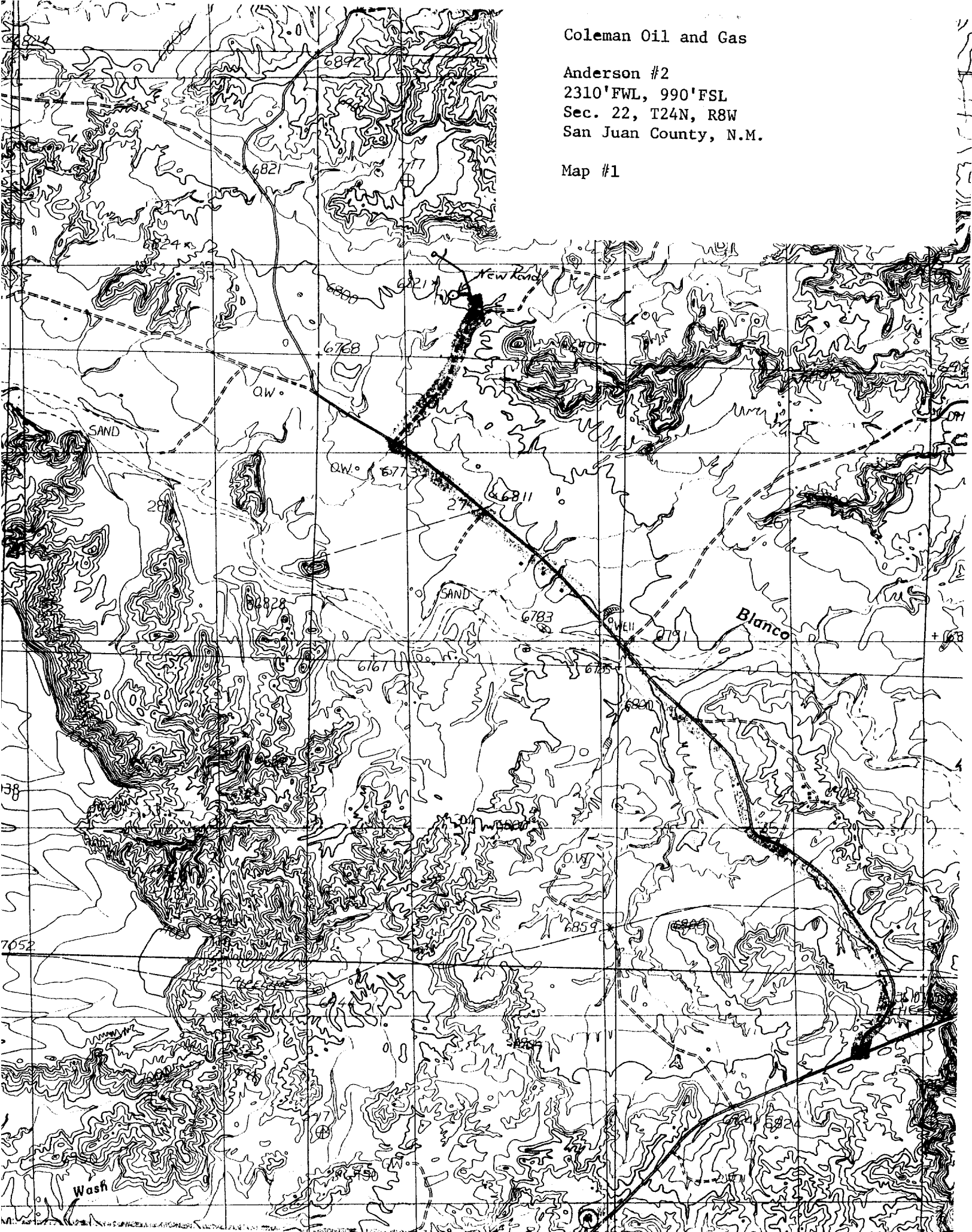
Date Surveyed
July 17, 1989
Signature & Seal of Professional Surveyor

Certificate No. 5979
Edgar L. Risenhoover

Coleman Oil and Gas

Anderson #2
2310'FWL, 990'FSL
Sec. 22, T24N, R8W
San Juan County, N.M.

Map #1



AMENDMENT

Federal Lease No. NM 54366

Cementing Program - Anderson No. 2

Surface Casing:

155 sacks of class B cement with 2% CaCl_2
(183 ft³) Cement to circulate to surface

Production Casing: 2 Stage Cement Job

1st stage: 296 sacks (504 ft³) Lite cement followed
by 100 sacks (118 ft³) class B cement.
Cement to cover Mesa Verde formation at
3417'.

2nd stage: (Stage tool at 3250') 613 sacks (1042 ft³)
Lite cement. Top of cement to fill to shoe
of 8-5/8" casing at 200'.