

UNITED STATES  
DEPARTMENT OF THE INTERIOR  
BUREAU OF LAND MANAGEMENT

## APPLICATION FOR PERMIT TO DRILL OR DEEPEN

## 1A. TYPE OF WORK

DRILL ☒DEEPEN ☐

## B. TYPE OF WELL

OIL  
WELL ☒GAS  
WELL ☐

OTHER

SINGLE  
BORN ☒MULTIPLE  
BORN ☐

## 2. NAME OF OPERATOR

DUGAN PRODUCTION CORP. 6515

## 3. ADDRESS AND TELEPHONE NO.

P.O. Box 420, Farmington, NM 87499

## 4. LOCATION OF WELL (Report location clearly and in accordance with any State requirements.)\*

At surface  
2240' FNL & 543' FEL (SE/4 NE/4)  
At proposed prod. zone

## 14. DISTANCE IN MILES AND DIRECTION FROM NEAREST TOWN OR POST OFFICE\*

approx. 5 miles NE of Nageezi, NM

## 15. DISTANCE FROM PROPOSED\*

LOCATION TO NEAREST  
PROPERTY OR LEASE LINE, FT.  
(Also to nearest drig. unit line, if any)

543'

## 16. DISTANCE FROM PROPOSED LOCATION\*

TO NEAREST WELL, DRILLING, COMPLETED,  
OR APPLIED FOR, ON THIS LEASE, FT.approx. 1584'  
from Sapp #1

## 18. NO. OF ACRES IN LEASE

1600

## 19. PROPOSED DEPTH

5450'

17. NO. OF ACRES ASSIGNED  
TO THIS WELL

40

## 20. ROTARY OR CABLE TOOLS

Rotary

## 21. ELEVATIONS (Show whether DF, RT, GR, etc.)

6748' (est) GL

## 22. APPROX. DATE WORK WILL START\*

ASAP

## PROPOSED CASING AND CEMENTING PROGRAM

SIZE OF HOLE	GRADE, SIZING/CASING	WEIGHT PER FOOT	SETTING DEPTH	QUANTITY OF CEMENT
12-1/4"	8-5/8"	24#	200' 320'	159 cf circ. to surface
7-7/8"	4-1/2"	10.5#	5450'	1746 cf circ. to surface

This action is subject to technical and  
procedural review pursuant to 43 CFR 3165.3  
and appeal pursuant to 43 CFR 3165.4.

DRILLING OPERATIONS AUTHORIZED ARE  
SUBJECT TO CONDITIONS WITH ATTACHED  
"GENERAL REQUIREMENTS"

Plan to drill a 12-1/4" hole and set 200' of 8-5/8" OD, 24#, J-55 surface casing;  
then plan to drill a 7-7/8" hole to total depth with gel-water-mud program to  
test the Gallup formation. Plan to run IES and CDL logs. If determined productive,  
will run 4-1/2", 10.5#, J-55 casing with stage tool, selectively perforate, frac,  
clean out after frac and complete well.

RECEIVED  
MAY - 1 1995

OIL CON. DIV.

DIST. 3

IN ABOVE SPACE DESCRIBE PROPOSED PROGRAM. If proposal is to deepen, give data on present productive zone and proposed new productive zone. If proposal is to drill or  
deepen directionally, give pertinent data on subsurface locations and measured and true vertical depths. Give blowout preventer program, if any.

54.

SIGNED

Sherman E. Dugan

TITLE Vice-President

DATE 3/3/95

(This space for Federal or State office use)

PERMIT NO.

APPROVAL DATE

Application approval does not warrant or certify that the applicant holds legal or equitable title to those rights in the subject lease which would entitle the applicant to conduct operations thereon.  
CONDITIONS OF APPROVAL, IF ANY:

APPROVED BY

TITLE

DATE APR 27 1995

\*See Instructions On Reverse Side

Title 18 U.S.C. Section 1001, makes it a crime for any person knowingly and willfully to make to any department or agency of the  
United States any false, fictitious or fraudulent statements or representations as to any matter within the jurisdiction of that department or agency.

NMOC

DISTRICT MANAGER

District I  
PO Box 1900, Hobbs, NM 88241-1900  
District II  
PO Drawer DD, Artesia, NM 88211-0719  
District III  
1000 Rio Brazos Rd., Aztec, NM 87410  
District IV  
PO Box 2088, Santa Fe, NM 87504-2088

State of New Mexico  
Energy, Minerals & Natural Resources Department

OIL CONSERVATION DIVISION  
PO Box 2088  
Santa Fe, NM 87504-2088

Form C-102  
Revised February 21, 1994  
Instructions on back  
Submit to Appropriate District Office  
State Lease - 4 Copies  
Fee Lease - 3 Copies

☐ AMENDED REPORT

WELL LOCATION AND ACREAGE DEDICATION PLAT

* API Number 30-045-29243		* Pool Code 42289	* Pool Name Lybrook Gallup
* Property Code 003828	* Property Name Sapp		* Well Number 2
* OGRID No. 006515	* Operator Name Dugan Production Corporation		* Elevation 6748' Estimated

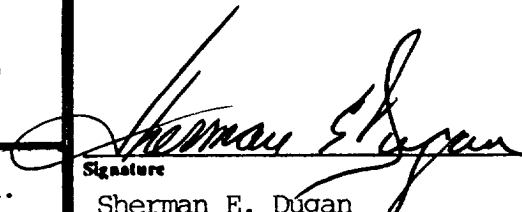
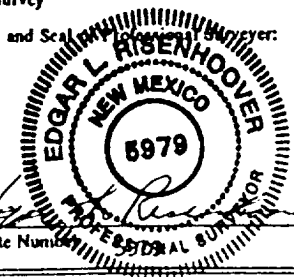
10 Surface Location

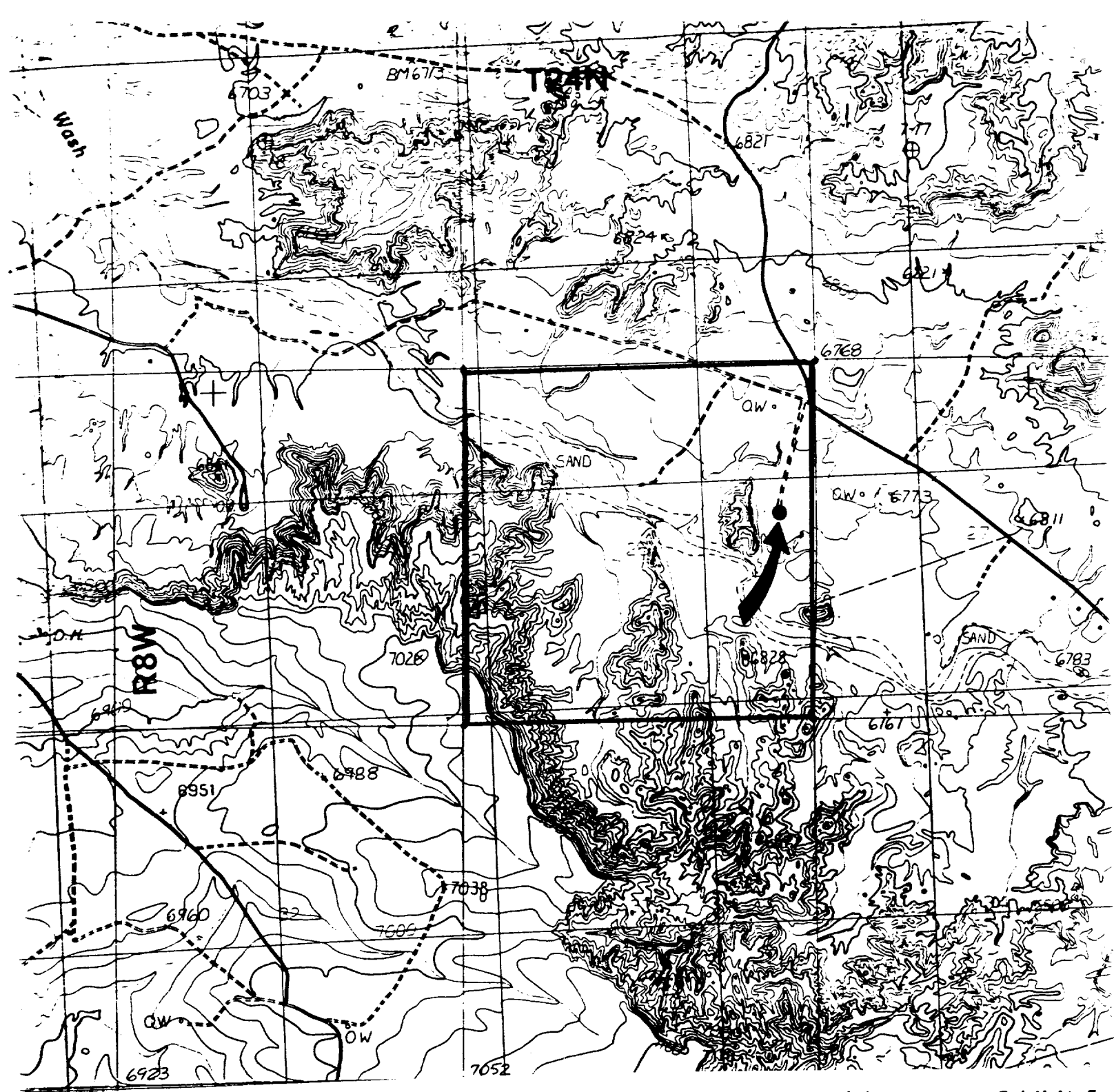
UL or lot no.	Section	Township	Range	Lot Ida	Feet from the	North/South line	Feet from the	East/West line	County
H	28	24N	8W		2240	North	543	East	San Juan

11 Bottom Hole Location If Different From Surface

UL or lot no.	Section	Township	Range	Lot Ida	Feet from the	North/South line	Feet from the	East/West line	County
* Dedicated Acres 40		* Joint or Infill		* Consolidation Code		* Order No.			

NO ALLOWABLE WILL BE ASSIGNED TO THIS COMPLETION UNTIL ALL INTERESTS HAVE BEEN CONSOLIDATED  
OR A NON-STANDARD UNIT HAS BEEN APPROVED BY THE DIVISION

16					2240'
				Dugan Prod. SF 078868	
					543'
		Section 28			
					17 OPERATOR CERTIFICATION
					I hereby certify that the information contained herein is true and complete to the best of my knowledge and belief
					 Signature Sherman E. Dugan Printed Name Vice-President Title 3-3-95 Date
					18 SURVEYOR CERTIFICATION
					I hereby certify that the well location shown on this plat was plotted from field notes of actual surveys made by me or under my supervision, and that the same is true and correct to the best of my belief.
					December 20, 1994 Date of Survey Signature and Seal of Surveyor:  Certificate Number



### Existing Roads

### Exhibit E

Vicinity of nearest town or reference pt.  
approx. 5 miles NE of Nageezi, NM

Type of surface dirt

Conditions good

Other \_\_\_\_\_

Reference map: USGS map

Crow Mesa West, NM

DUGAN PRODUCTION CORP. - SAPP #2

### Planned Access Road(s)

### Exhibit E

Width 20' Maximum grades 3%

Drainage design as required

Cuts & Fills as required

Surfacing material none

☒ Turnouts ☐ Waterbars

☒ Culverts ☐

☒ Gates ☐

☒ Cattleguards ☐ Access Road & Pipeline

☒ Fence cuts ☐

Access road(s) do do not cross fed/Ind land.