

DEPUTY OIL & GAS INSPECTOR

MAR 28 1997

JICARILLA APACHE TRIBE

ENVIRONMENTAL PROTECTION OFFICE

P.O. BOX 507
DULCE, NEW MEXICO 87528

SUBMIT 1 COPY TO
NATURAL
RESOURCE DEPT
AND OIL -GAS
ADMINISTRATION

PIT REMEDIATION AND CLOSURE REPORT

Operator: PNM Gas Services (Conoco) Telephone: 324-3764

Address: 603 W. Elm Street Farmington, NM 87401

Facility or Well Name: Jicarilla D-7

Location: Unit: I Sec. 31 T. 26 N R. 3 W County Rio Arriba

Pit Type: Separator ☒ Dehydrator ☐ Other ☐

Land Type: Jicarilla Apache

Pit Location: Pit dimensions: length 22' width 15' depth 5'

(Attach diagram) Reference: wellhead ☒ other

Footage from reference: 60'

Direction from reference: Straight Degrees East of North X
West of South

Depth to Ground Water:

(Vertical distance from contaminants to seasonal high water elevation of ground water)

Less than 50 feet	(20 points)	
50 feet to 99 feet	(10 points)	
Greater than 100 feet	(0 points)	


Wellhead Protection Area:

(Less than 200 feet from a private domestic water source, or, less than 1,000 feet from all other water sources)

Yes (20 points) 0
No (0 points)

Distance to Surface Water:

(Horizontal distance to perennial lakes, ponds, rivers, streams, creeks, irrigation canals and ditches)

Less than 200 feet	(20 points)	
200 feet to 1,000 feet	(10 points)	
Greater than 1,000 feet	(0 points)	

Distance to Ephemeral Stream (dry wash):

(Horizontal distance to all downgradient streams having a width of at least 10 feet)

Less than or equal to 100 feet (10 points)
Greater than 100 feet (0 points) *6*

Distance to Nearest Lake, Playa, or Watering Pond:

(Horizontal distance to all downgradient lakes, playas, and livestock or wildlife water ponds)

Less than or equal to 100 feet	(10 points)	6
Greater than 100 feet	(0 points)	

RANKING SCORE (TOTAL POINTS): 5

Date Remediation Started: 9/10/96 Date Completed: 10/8/96

Remediation Method: Excavation X Approx. Cubic Yards 61

(Check all appropriate sections)

Landfarmed X Amount Landfarmed (cubic yds): 61

Other _____

Remediation Location: Onsite X Offsite _____

(i.e., landfarmed onsite, name and location of offsite facility)

General Description of Remedial Action:

Removed contaminated soil from all four side walls as to get a below 100 ppm head space reading. Bottom was solid sandstone rock.

Ground Water Encountered: No X Yes _____ Depth _____

Final Pit Closure Sampling:

Sample Location North, East, South and West side walls.

(if multiple samples, attach sample result and diagram of sample locations and depths.)

Sample depth 5'

Sample date 9/10/96 Sample time 1450

Sample Results

Soil: Benzene (ppm) <0.0002 Water: Benzene (ppb) _____

Total BTEX (ppm) <0.0002 Toluene (ppb) _____

Field headspace (ppm) 15.7 Ethylbenzene (ppb) _____

TPH <5.0 ppm Method 8015 Total Xylenes (ppb) _____

Ground Water Sample: Yes _____ No X (If yes, attach sample results)

I HEREBY CERTIFY THAT THE INFORMATION ABOVE IS TRUE AND COMPLETE TO THE BEST OF MY KNOWLEDGE AND MY BELIEF

DATE 9/15/96 PRINTED NAME Ronald A. Dedrick

SIGNATURE Ronald A. Dedrick AND TITLE Environmental Technician II

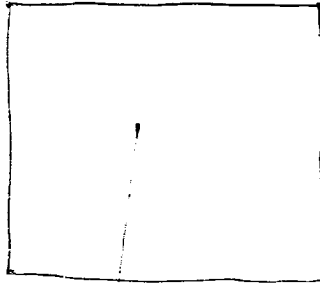
AFTER REVIEW OF THE PIT CLOSURE INFORMATION, PIT CLOSURE IS APPROVED IN ACCORDANCE TO JICARILLA APACHE TRIBE PIT CLOSURE ORDINANCE.

APPROVED: YES X NO _____ (REASON): _____

SIGNED: Ken C. Maud DATE: 9-17-96

Jicarilla D-7
Sec 31 T26N R34W Unit I
Conoco

meterhouse



SEP

PNM pit

60'



wellhead

OFF: (505) 325-5667



LAB: (505) 325-1556

Diesel Range Organics

Attn: *Denver Bearden*
Company: *PNM Gas Services*
Address: *603 W. Elm*
City, State: *Farmington, NM 87401*

Date: *11-Sep-96*
COC No.: *5000*
Sample No. *12122*
Job No. *2-1000*

Project Name: *PNM Gas Services - Jicarilla D-7 Run 12-71*
Project Location: *9609101450; 4pt. Composite*
Sampled by: *EP* Date: *10-Sep-96* Time: *14:50*
Analyzed by: *DC/BV* Date: *11-Sep-96*
Sample Matrix: *Soil*

Laboratory Analysis

<i>Parameter</i>	<i>Result</i>	<i>Unit of Measure</i>	<i>Detection Limit</i>	<i>Unit of Measure</i>
<i>Diesel Range Organics (C10 - C28)</i>	<i><5.0</i>	<i>mg/kg</i>	<i>5.0</i>	<i>mg/kg</i>

Quality Assurance Report

DRO QC No.: *0489-QC*

Calibration Check

<i>Parameter</i>	<i>Method Blank</i>	<i>Unit of Measure</i>	<i>True Value</i>	<i>Analyzed Value</i>	<i>% Diff</i>	<i>Limit</i>
<i>Diesel Range (C10 - C28)</i>	<i><5.0</i>	<i>ppm</i>	<i>100</i>	<i>99</i>	<i>0.6</i>	<i>15%</i>

Matrix Spike

<i>Parameter</i>	<i>1 - Percent Recovered</i>	<i>2 - Percent Recovered</i>	<i>Limit</i>	<i>%RSD</i>	<i>Limit</i>
<i>Diesel Range (C10-C28)</i>	<i>98</i>	<i>114</i>	<i>(70-130)</i>	<i>11</i>	<i>20%</i>

Method - SW-846 EPA Method 8015A mod. - Nonhalogenated Volatile Hydrocarbons by Gas Chromatography

Approved by: *[Signature]*
Date: *9/12/96*

OFF: (505) 325-5667



LAB: (505) 325-1556

AROMATIC VOLATILE ORGANICS

Attn: *Denver Bearden*
Company: *PNM Gas Services*
Address: *603 W. Elm*
City, State: *Farmington, NM 87401*

Date: *12-Sep-96*
COC No.: *5000*
Sample No.: *12122*
Job No.: *2-1000*

Project Name: *PNM Gas Services - Jicarilla D-7 Run 12-71*
Project Location: *9609101450; 4pt. Composite*
Sampled by: *EP* Date: *10-Sep-96* Time: *14:50*
Analyzed by: *DC* Date: *11-Sep-96*
Sample Matrix: *Soil*

Laboratory Analysis

Parameter	Result	Unit of Measure	Detection Limit	Unit of Measure
<i>Benzene</i>	<i><0.2</i>	<i>ug/kg</i>	<i>0.2</i>	<i>ug/kg</i>
<i>Toluene</i>	<i><0.2</i>	<i>ug/kg</i>	<i>0.2</i>	<i>ug/kg</i>
<i>Ethylbenzene</i>	<i><0.2</i>	<i>ug/kg</i>	<i>0.2</i>	<i>ug/kg</i>
<i>m,p-Xylene</i>	<i><0.2</i>	<i>ug/kg</i>	<i>0.2</i>	<i>ug/kg</i>
<i>o-Xylene</i>	<i><0.2</i>	<i>ug/kg</i>	<i>0.2</i>	<i>ug/kg</i>
<i>TOTAL</i>	<i><0.2</i>	<i>ug/kg</i>		

Method - SW-846 EPA Method 8020 Aromatic Volatile Organics by Gas Chromatography

Approved by: *[Signature]*
Date: *9/12/96*

P.O. BOX 2606 • FARMINGTON, NM 87499

- TECHNOLOGY BLENDING INDUSTRY WITH THE ENVIRONMENT -

JICARILLA APACHE TRIBE
ENVIRONMENTAL
PROTECTION OFFICE
P.O. BOX 507
DULCE, NEW MEXICO 87528

SUBMIT 1 COPY TO
NATURAL
RESOURCE DEPT
AND OIL-GAS
ADMINISTRATION

ON-SITE SOIL REMEDIATION REPORT

Operator: PNM Gas Services (Conoco) Telephone: 324-3764

Address: 603 W. Elm Street Farmington, NM 87401

Facility or Well Name: Jicarilla D-7

Location: Unit: I Sec. 31 T. 26 N R. 3 W County Rio Arriba

Land Type: Jicarilla Apache

Date Remediation Started: 9/10/96

Date Completed: 9/27/96

Remediation Method: Landfarmed X

Approx. cubic yards 61

Composted

Other

Depth to Ground Water: (pts.) 0

Distance to an Ephemeral Stream: (pts.) 0

Distance to Nearest Lake, Playa,
or Watering Pond: (pts.) 0

Wellhead Protection Area: (pts.) 0

Distance to Surface Water: (pts.) 0

Ranking Score (Total Points): 0

Final Closure Sampling:

Sampling Date: 9/24/96 Time 0922

Sampling Results:

Field Headspace (ppm) 16.2

TPH (ppm) 45.0 Method 8015

Other

I HEREBY CERTIFY THAT THE INFORMATION ABOVE IS TRUE AND COMPLETE TO THE BEST OF MY KNOWLEDGE AND BELIEF

DATE

9/27/96

PRINTED NAME

Ronald A. Dedrick

SIGNATURE

Ronald A. Dedrick

AND TITLE

Environmental Technician II

AFTER REVIEW OF THE SOIL REMEDIATION INFORMATION, ON-SITE REMEDIATION APPROVED IN ACCORDANCE TO THE
JICARILLA APACHE TRIBE PIT CLOSURE ORDINANCE

APPROVED: YES X NO (REASON)

SIGNED:

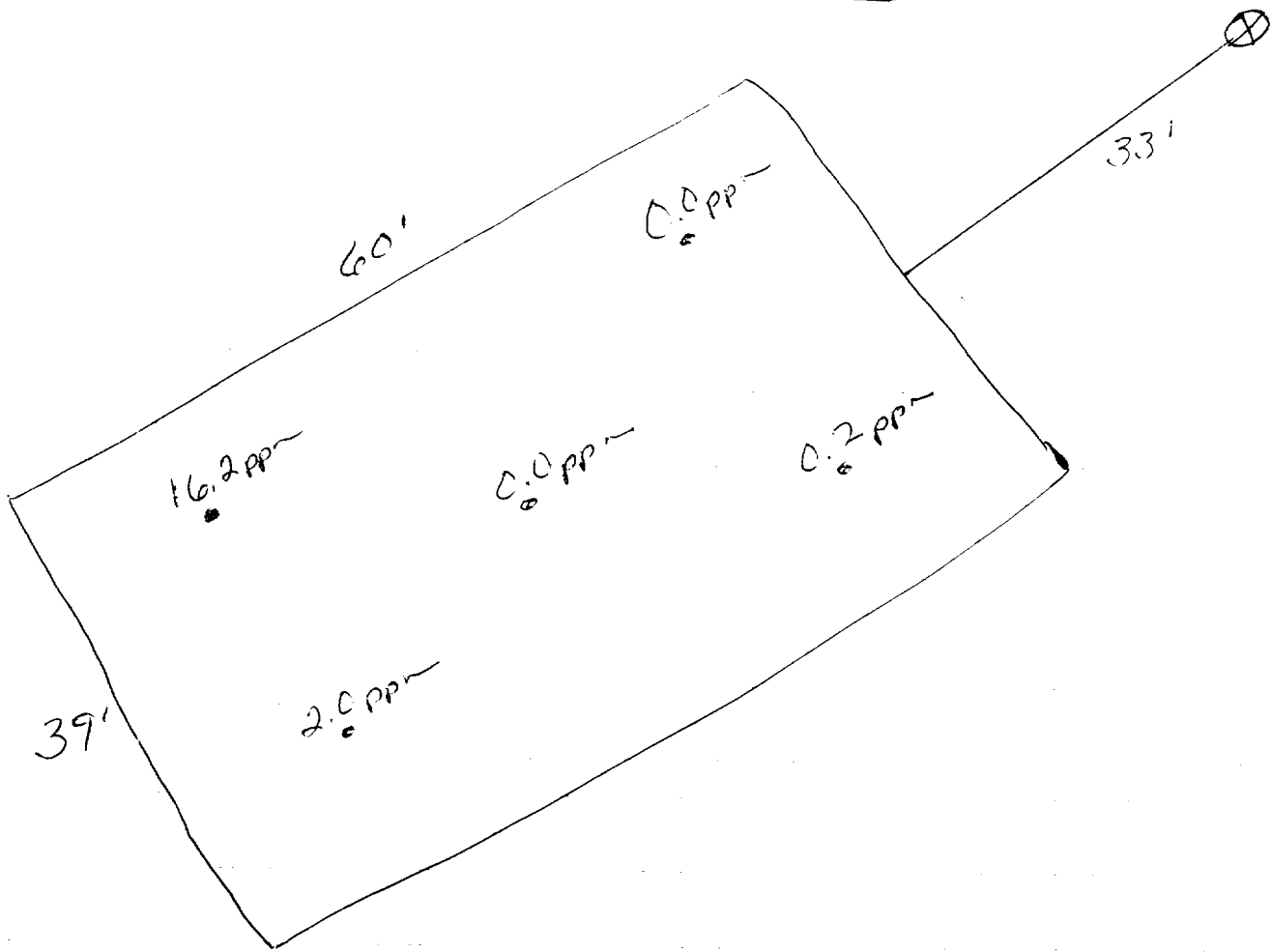
Kenn C. Mammell

DATE:

9-30-96

Section 31
Sec. 31 T26N R3W Unit I
Conoco

Land Farm



OFF: (505) 325-5667



LAB: (505) 325-1556

Diesel Range Organics

Attn: *Denver Bearden*
Company: *PNM Gas Services*
Address: *603 W. Elm*
City, State: *Farmington, NM 87401*

Date: *26-Sep-96*
COC No.: *5306*
Sample No. *12280*
Job No. *2-1000*

Project Name: *PNM Gas Services - Jicarilla D-7 Landfarm Run 12-71*
Project Location: *9609240922; 5pt. Composite*
Sampled by: *RD* Date: *24-Sep-96* Time: *9:22*
Analyzed by: *DC/HR* Date: *25-Sep-96*
Sample Matrix: *Soil*

Laboratory Analysis

<i>Parameter</i>	<i>Result</i>	<i>Unit of Measure</i>	<i>Detection Limit</i>	<i>Unit of Measure</i>
<i>Diesel Range Organics (C10 - C28)</i>	<i><5.0</i>	<i>mg/kg</i>	<i>5.0</i>	<i>mg/kg</i>

Quality Assurance Report

DRO QC No.: 0489-QC

Calibration Check

<i>Parameter</i>	<i>Method Blank</i>	<i>Unit of Measure</i>	<i>True Value</i>	<i>Analyzed Value</i>	<i>% Diff</i>	<i>Limit</i>
<i>Diesel Range (C10 - C28)</i>	<i><5.0</i>	<i>ppm</i>	<i>100</i>	<i>101</i>	<i>1.3</i>	<i>15%</i>

Matrix Spike

<i>Parameter</i>	<i>1 - Percent Recovered</i>	<i>2 - Percent Recovered</i>	<i>Limit</i>	<i>%RSD</i>	<i>Limit</i>
<i>Diesel Range (C10-C28)</i>	<i>111</i>	<i>95</i>	<i>(70-130)</i>	<i>11</i>	<i>20%</i>

Method - *SW-846 EPA Method 8015A mod. - Nonhalogenated Volatile Hydrocarbons by Gas Chromatography*

Approved by: *[Signature]*

Date: *9/26/96*

P.O. BOX 2606 • FARMINGTON, NM 87499

- TECHNOLOGY BLENDING INDUSTRY WITH THE ENVIRONMENT -