

NEW MEXICO
OIL CONSERVATION COMMISSION

Form O-128

WELL LOCATION AND/OR GAS PRORATION PLAT

DATE April 15, 1957

OPERATOR THE OHIO OIL COMPANY LEASE JICARILLA

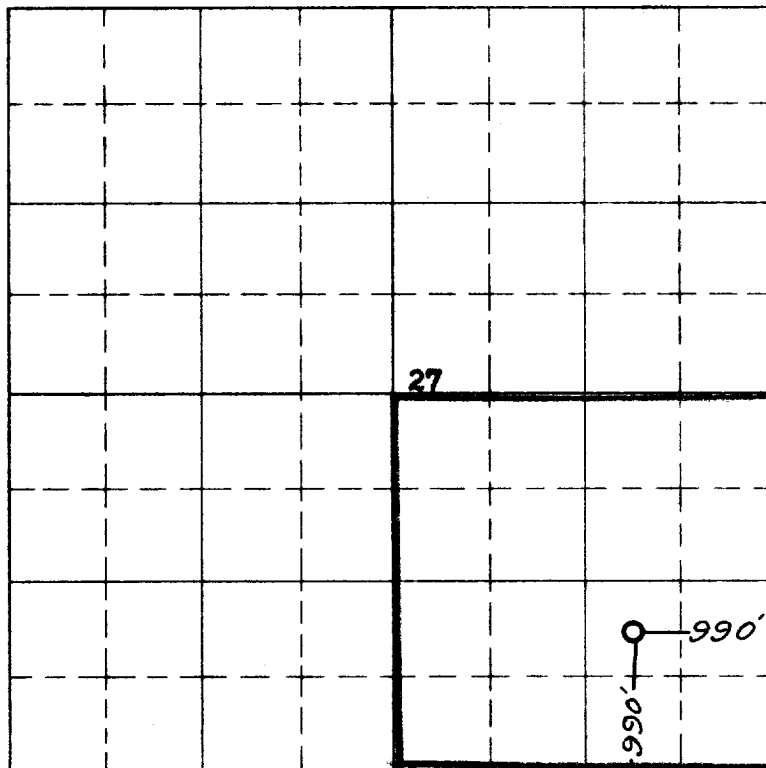
WELL NO. 8 SECTION 27 TOWNSHIP 26 NORTH RANGE 5 WEST NMPM

LOCATED 990 FEET FROM the SOUTH LINE 990 FEET FROM the EAST LINE

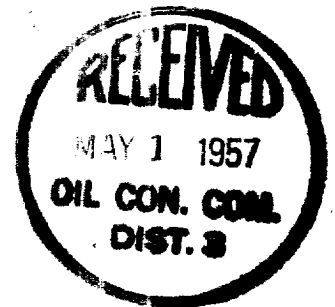
RIO ARriba COUNTY, NEW MEXICO G.L. ELEVATION 6661.0 UNGRADED.

NAME OF PRODUCING FORMATION Pictured Cliffs POOL So. Blanco DEDICATED ACREAGE 160.00

Note: All distances must be from outer boundaries of section.



Scale 4 inches equal 1 mile



N

NOTE

This section of
form is to be used
for gas wells only

This is to certify that the above plat was prepared from
field notes of actual surveys made by me or under my
supervision and that the same are true and correct to the
best of my knowledge and belief.

Date Surveyed 2 NOVEMBER 1957

James P. Reese
Registered Professional Engineer and/or Land Surveyor

JAMES P. REESE
N. MEX. REG. NO. 1243

1. Is this well a Dual Comp.

Yes _____ No X

2. If the answer to Question 1

is yes, are there any otherdually
completed wells within the
dedicated acreage.

Yes _____ No _____

Name M. J. Boyce

Position Division Production Supt.

Representing The Ohio Oil Company

Address Box 120, Casper, Wyoming

(Seal)

OIL CONSERVATION COMMISSION		
AZTEC DISTRICT OFFICE		
No. Copies Received		2
DISTRIBUTION		
	NO. FURNISHED	
Operator		
Santa Fe	1	
Production Office		
State Land Office		
U. S. G. S.		
Transporter		
File	1	✓