

UNITED STATES
DEPARTMENT OF THE INTERIOR
BUREAU OF LAND MANAGEMENT

SUBMIT IN TRIPlicate
(Other instructions on
reverse side)

Form approved.
Budget Bureau No. 1004-0136
Expires August 31, 1985

APPLICATION FOR PERMIT TO DRILL, DEEPEN, OR PLUG BACK

1a. TYPE OF WORK

DRILL ☐

DEEPEN ☐

PLUG BACK ☒

b. TYPE OF WELL

WELL ☐

GAS
WELL ☒

OTHER

SINGLE
ZONE ☒

MULTIPLE
ZONE ☐

2. NAME OF OPERATOR

Meridian Oil Inc.

3. ADDRESS OF OPERATOR

P.O. Box 4289, Farmington, New Mexico 87499

4. LOCATION OF WELL (Report location clearly and in accordance with any State requirements.)*

At surface

1650' ENL, 990' FEL

At proposed prod. zone

14. DISTANCE IN MILES AND DIRECTION FROM NEAREST TOWN OR POST OFFICE*

15. DISTANCE FROM PROPOSED*

LOCATION TO NEAREST
PROPERTY OR LEASE LINE, FT.
(Also to nearest drilg. unit line, if any)

16. NO. OF ACRES IN LEASE

17. NO. OF ACRES ASSIGNED
TO THIS WELL

520

18. DISTANCE FROM PROPOSED LOCATION*
TO NEAREST WELL, DRILLING COMPLETED,
OR APPLIED FOR, ON THIS LEASE, FT.

19. PROPOSED DEPTH

20. ROTARY OR CABLE TOOLS

21. ELEVATIONS (Show whether DF, BT, GR, etc.)

6700' GL

22. APPROX. DATE WORK WILL START*

23. PROPOSED CASING AND CEMENTING PROGRAM

SIZE OF HOLE	SIZE OF CASING	WEIGHT PER FOOT	SETTING DEPTH	QUANTITY OF CEMENT

See attached Recompletion Procedure.

RECEIVED

DEC 26 1989

OIL CON. DIV

DIST. 3

IN ABOVE SPACE DESCRIBE PROPOSED PROGRAM: If proposal is to deepen or plug back, give data on present productive zone and proposed new productive zone. If proposal is to drill or deepen directionally, give pertinent data on subsurface locations and measured and true vertical depths. Give blowout preventer program, if any.

24.

SIGNED

R. Stimpert

TITLE Production Engineer

DATE

12-13 -89

(This space for Federal or State office use)

PERMIT NO.

APPROVAL DATE

APPROVED
AS AMENDED

APPROVED BY

TITLE

CONDITIONS OF APPROVAL, IF ANY:

DEC 21 1989

AREA MANAGER

*See Instructions On Reverse Side

**Recompletion Procedure
Vaughn #1**

1. Prepare location for workover. Install / replace anchors as necessary.
2. MOL with workover rig, hold safety meeting, install safety signs and proper fire equipment at strategic points. Comply with all BLM, NMOCD, and MOI regulations.
3. NU 6" 3000 psi BOP and stripping head.
4. TOOH and laydown 3041' of line pipe.
5. PU 2 3/8" 4.7# J-55 EUE tubing and TIH with 5½" casing scraper. CO to the base of the 5½" casing at 2990'. TOOH.
6. RU wireline unit and set a 5½" bridge plug @ 2985'. Install tree-saver or run a tension set packer to isolate wellhead. Pressure test casing to 3000 psi for 15 minutes. If casing fails, isolate casing leak(s) with a test packer. A squeeze procedure will be provided if the casing is determined to be repairable.
7. Run GR-CCL-CNL .
8. Perforate using 4" HSC. Shoot 2 SPF.
9. Breakdown formation and evaluate. If necessary, fracture stimulate.
10. TIH w/ 2 3/8" tubing and clean out to PBTD.
11. When well is clean, land 2 3/8" tubing with a common pump seating nipple one joint off bottom. Land tubing at ±2978'. Swab well in. Record final gauges. ND BOP. NU tree. Rig down and release rig.
12. Shut well in for pressure build up. Obtain gas and water sample for analysis.

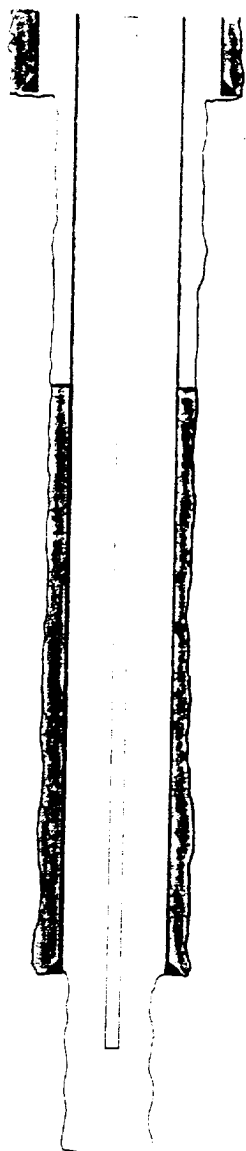
B L 8 1 1 4
R
DECEMBER
OIL CONTROL
UNIT 3

Vaughn #1
NE/4 Section 26, T-26-N, R-6-W
Rio Arriba County, New Mexico

Wellbore Schematics

CURRENT

PROPOSED



2 3/4" 40.5# K-55
set @ 126'

Top of cement @ 1969' (calculated)

8 7/8" bit
@ 2289' w/100%
@ 2464' w/75%

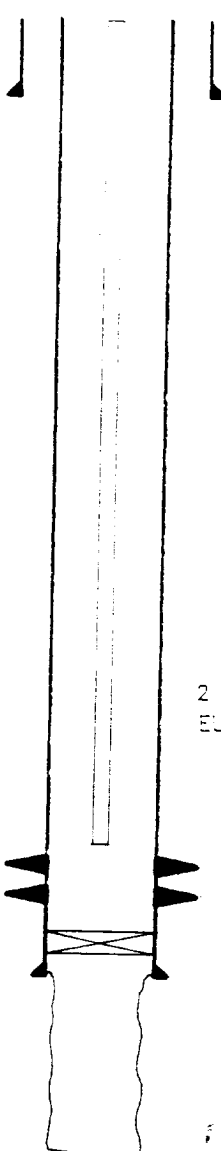
1" line pipe set @ 3041'

8 7/8" bit

5 1/2" 15.5# J-55
set @ 2990' w/150SX

Openhole 2990'-3052'

701' of fill @ 100%
525' @ 73%

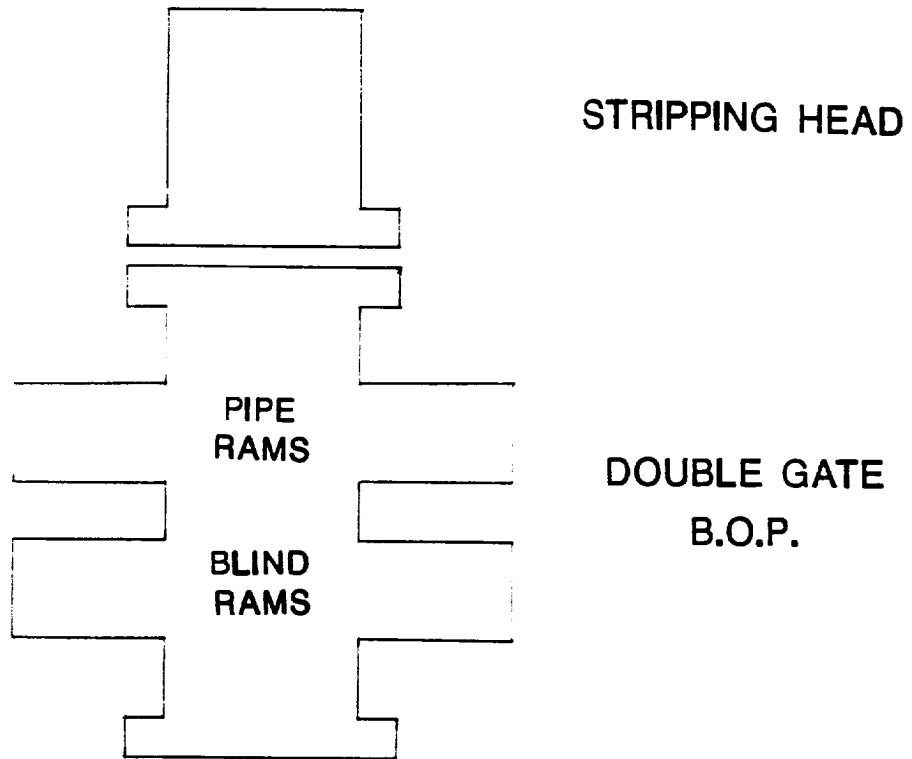


2 3/8" 4.7# J-55
EUE tubing set @ 2978'

Fruitland Coal peris
@ 2873'-2978'

Bridge plug
set @ 2985'

WORKOVER / RECOMPLETION B.O.P. SCHEMATIC



MINIMUM: 6" 2000 PSI DOUBLE GATE B.O.P.

**MAXIMUM ANTICIPATED SHUT-IN WELLHEAD
PRESSURE IS LESS THAN 2000 PSI**

RECEIVED

DEC 26 1989

OIL CON. DIST.

DIST. 3