

NEW MEXICO
OIL CONSERVATION COMMISSION

Form C-128

Well Location and/or Gas Proration Plat

Date July 13, 1956

Operator Magnolia Petroleum Company

Lease Jicarilla "D" Cont. # 99

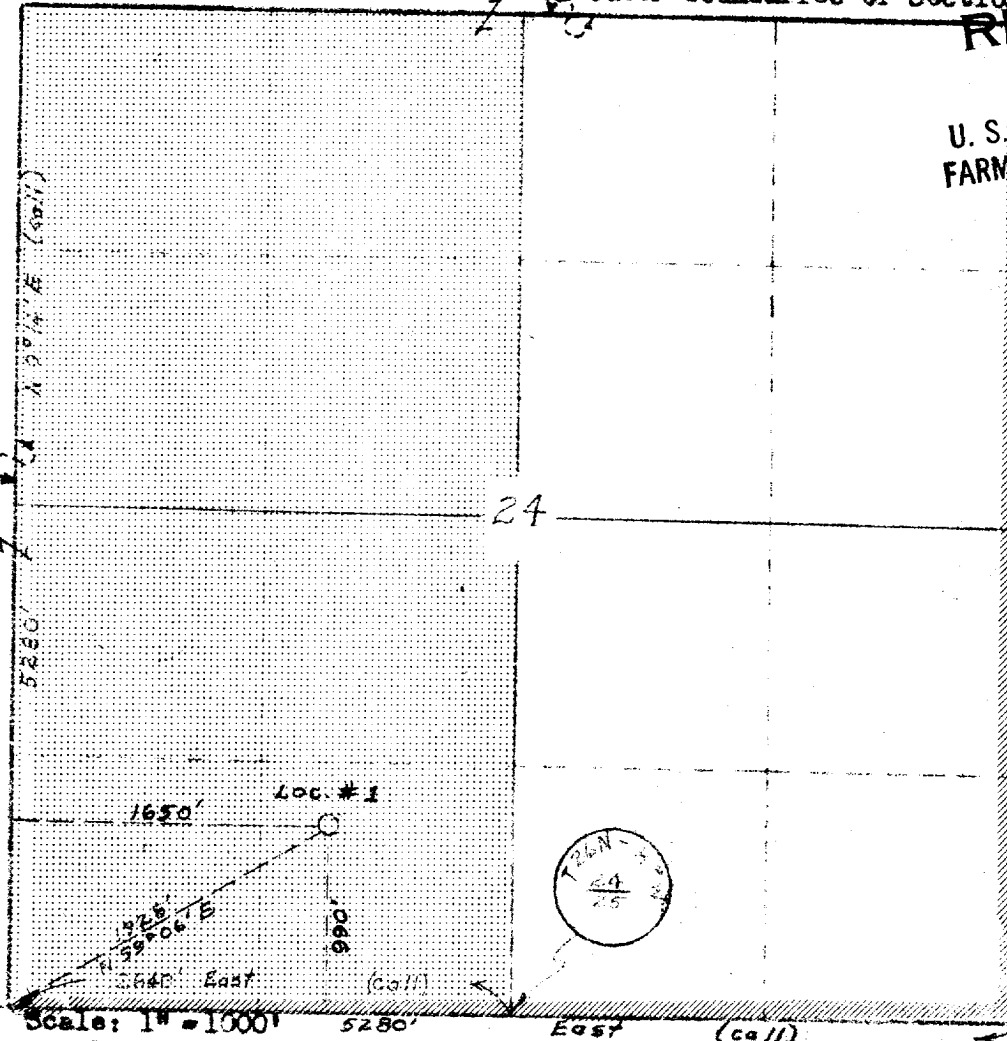
Well No. One (1) Section 24 Township 26 N Range 3 W NMPK

Located 1650 Feet From West Line, 990 Feet From South Line,

Rio Arriba County, New Mexico. G. L. Elevation 7419

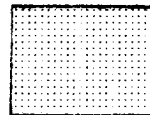
Name of Producing Formation Mesa Verde Extension of
Pool Blanco Dedicated Acreage 320

(Note: All distances must be from outer boundaries of Section)



RECEIVED
JUL 27 1956
U. S. GEOLOGICAL SURVEY
FARMINGTON, NEW MEXICO

Allotted
Acreage



Lease
Boundary



RECEIVED
JUG 1 1956
OIL CON. COM.
DIST. 3

1. Is this Well a Dual Comp.? Yes X No. .
2. If the answer to Question 1 is yes, are there any other dually completed wells within the dedicated acreage? Yes No X.

This is to certify that the above plat was prepared from field notes of actual surveys made by me or under my supervision and that the same are true and correct to the best of my knowledge and belief.

Name B. Y. [Signature]
Position Engl. Geol., Division Superintendent
Address Magnolia Petroleum Company
P. O. Box 63, Hobbs, Texas

Date Surveyed 8-8-55

[Signature]
Registered Professional Engineer and/or
Land Surveyor 1415

OIL CONSERVATION COMMISSION		
AZTEC DISTRICT OFFICE		
No. Copies Received <u>2</u>		
DISTRIBUTION		
	NO.	
Operator		
Supra Co	1	
Production Office		
State Land Office		
U. S. G. S.		
Transporter		
File	1	✓