

**NEW MEXICO OIL CONSERVATION COMMISSION  
WELL LOCATION AND ACREAGE DEDICATION PLAT**

Form C-102  
Supersedes C-128  
Effective 1-1-65

All distances must be from the outer boundaries of the Section.

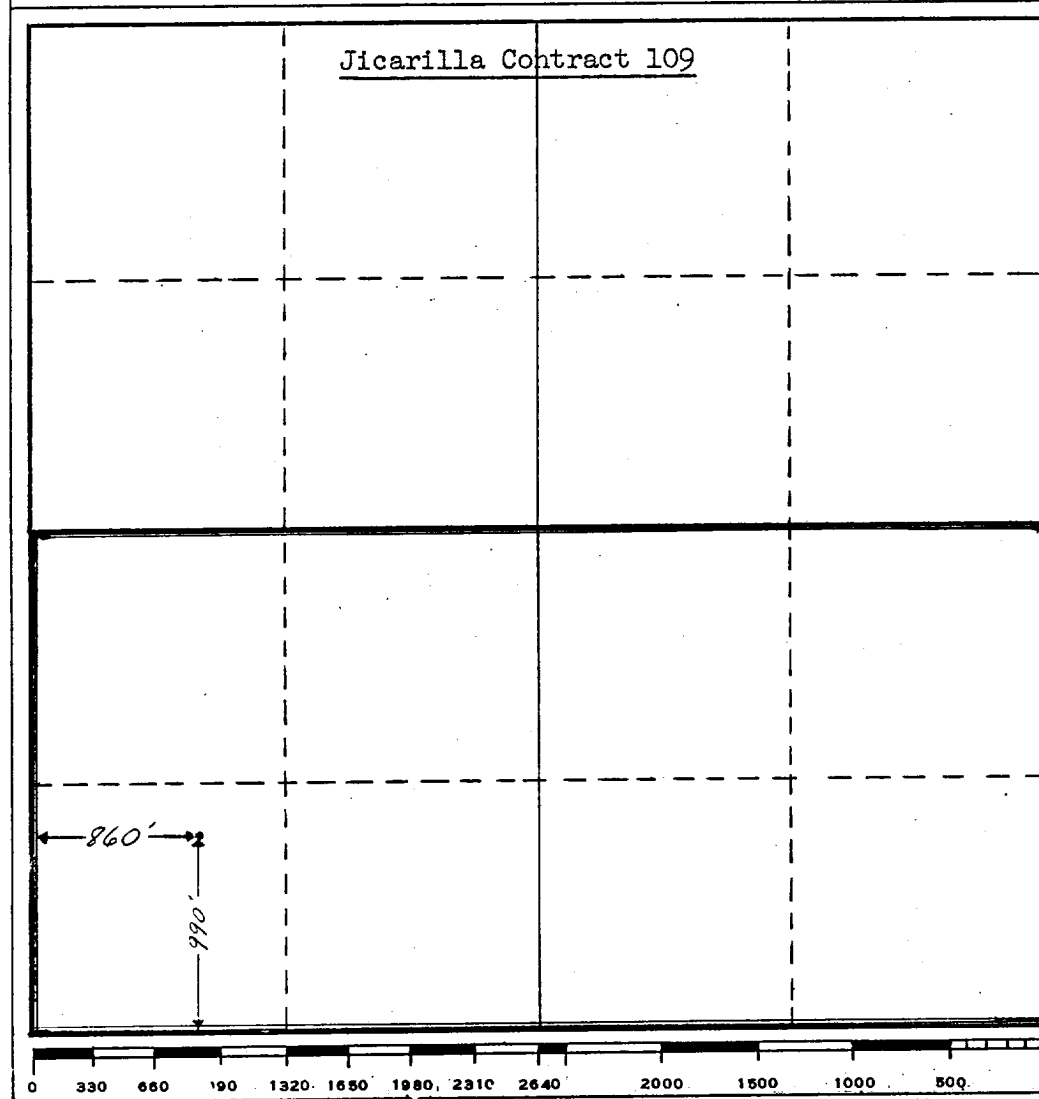
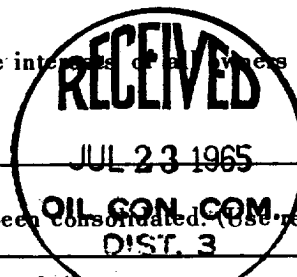
|  |                                      |                             |                               |  |                      |
|--|--------------------------------------|-----------------------------|-------------------------------|--|----------------------|
| Operator<br><b>Tenneco Oil Company</b>   |                                      |                             | Lease<br><b>Jicarilla "B"</b> |  | Well No.<br><b>3</b> |
| Unit Letter<br><b>M</b>  | Section<br><b>15</b>                 | Township<br><b>26N</b>      | Range<br><b>5W</b>            | County<br><b>Rio Arriba</b>            |                      |
| Actual Footage Location of Well:<br><div style="display: flex; justify-content: space-between;"> <span>990 feet from the</span> <span><b>south</b> line and</span> <span>860 feet from the</span> <span><b>west</b> line</span> </div> |                                      |                             |                               |  |                      |
| Ground Level Elev.<br><b>6594</b>  | Producing Formation<br><b>Dakota</b> | Pool<br><b>Basin Dakota</b> |                               | Dedicated Acreage:<br><b>320</b> Acres |                      |

1. Outline the acreage dedicated to the subject well by colored pencil or hachure marks on the plat below.
2. If more than one lease is dedicated to the well, outline each and identify the ownership thereof (both as to working interest and royalty).
3. If more than one lease of different ownership is dedicated to the well, have the interests of all leases been consolidated by communitization, unitization, force-pooling, etc?

☐ Yes   ☐ No   If answer is "yes," type of consolidation \_\_\_\_\_

If answer is "no," list the owners and tract descriptions which have actually been consolidated. (Use reverse side of this form if necessary.) \_\_\_\_\_

No allowable will be assigned to the well until all interests have been consolidated (by communitization, unitization, forced-pooling, or otherwise) or until a non-standard unit, eliminating such interests, has been approved by the Commission.



**CERTIFICATION**

*I hereby certify that the information contained herein is true and complete to the best of my knowledge and belief.*

Original Signed By  
**HAROLD C. NICHOLS**

Name **H. C. Nichols**  
 Position **Senior Prod. Clerk**  
 Company **Tenneco Oil Company**  
 Date **July 9, 1965**

*I hereby certify that the well location shown on this plat was plotted from field notes of actual surveys made by me or under my supervision, and that the same is true and correct to the best of my knowledge and belief.*

**16 June 1965**

Date Surveyed  
**Robert H. Ernst**  
 Registered Professional Engineer  
 and/or Land Surveyor

**NM PE & LS 2463**  
 Certificate No.

UNITED STATES  
DEPARTMENT OF THE INTERIOR  
GEOLOGICAL SURVEY

## APPLICATION FOR PERMIT TO DRILL, DEEPEN, OR PLUG BACK

## 1a. TYPE OF WORK

DRILL ☒DEEPEN ☐PLUG BACK ☐

## b. TYPE OF WELL

OIL  
WELL ☐GAS  
WELL ☒

OTHER

SINGLE  
ZONE ☐MULTIPLE  
ZONE ☒

## 2. NAME OF OPERATOR

Tenneco Oil Company

## 3. ADDRESS OF OPERATOR

Box 1714, Durango, Colorado

## 4. LOCATION OF WELL (Report location clearly and in accordance with any State requirements\*)

At surface

990' FSL 860' FWL

At proposed prod. zone same

## 14. DISTANCE IN MILES AND DIRECTION FROM NEAREST TOWN OR POST OFFICE\*

FARMINGTON, N. M.

## 16. DISTANCE FROM PROPOSED\*

LOCATION TO NEAREST  
PROPERTY OR LEASE LINE, FT.  
(Also to nearest drlg. unit line, if any)

## 16. NO. OF ACRES IN LEASE

320

17. NO. OF ACRES ASSIGNED  
TO THIS WELL

320

18. DISTANCE FROM PROPOSED LOCATION\*  
TO NEAREST WELL, DRILLING, COMPLETED,  
OR APPLIED FOR, ON THIS LEASE, FT.

## 19. PROPOSED DEPTH

7635

## 20. ROTARY OR CABLE TOOLS

Rotary

## 21. ELEVATIONS (Show whether DF, RT, GR, etc.)

6594 GR

## 22. APPROX. DATE WORK WILL START\*

7-27-65

## 23.

## PROPOSED CASING AND CEMENTING PROGRAM

| SIZE OF HOLE | SIZE OF CASING | WEIGHT PER FOOT | SETTING DEPTH | QUANTITY OF CEMENT   |
|--------------|----------------|-----------------|---------------|--|
|              | 8-5/8          | 24#             | 450'          | 225 sx cement  |
|              | 5-1/2          | 14#             | 7635'         | 1st stage 235 sx   |
|              |                |                 |               | 2nd stage sufficient to circulate through stage collar to surface. |

Rig up w/Rotary. Drill to approximately 450'. Set 8-5/8" 24# J-55 ST&C casing. WOC. Drill out cement to approximately 7635 TD. Log and set 5-1/2" 14# casing at approximately 7635'. Perforate and Frac producing formations in both Gallup and Dakota and complete as a dual. Production Packer to be set between zones and produce Dakota through one string of 2-1/16" tubing and Gallup through second string of 2-1/16" tubing.

IN ABOVE SPACE DESCRIBE PROPOSED PROGRAM: If proposal is to deepen or plug back, give data on present productive zone and proposed new productive zone. If proposal is to drill or deepen directionally, give pertinent data on subsurface locations and measured and true vertical depths. Give blowout preventer program, if any.

## 24.

Original Signed By:

SIGNED J. H. WATKINS

TITLE District Office Supv.

DATE 7-21-65

(This space for Federal or State office use)

PERMIT NO.

APPROVAL DATE

APPROVED BY

TITLE

DATE

CONDITIONS OF APPROVAL, IF ANY: