

NEW MEXICO OIL CONSERVATION COMMISSION

Well Location and Acreage Dedication Plat

Section A.

Date June 18, 1958

Operator MAGNOLIA PETROLEUM COMPANY Lease JICARILLA "B"  
Well No. 6 Unit Letter        Section 17 Township 26N Range 3N NMPH  
Located 990 Feet From North Line, 990 Feet From East Line  
County Rio Arriba G. L. Elevation 7666 Dedicated Acreage 160 Acres  
Name of Producing Formation Pictured Cliffs Pool Tapasitos Pictured Cliffs

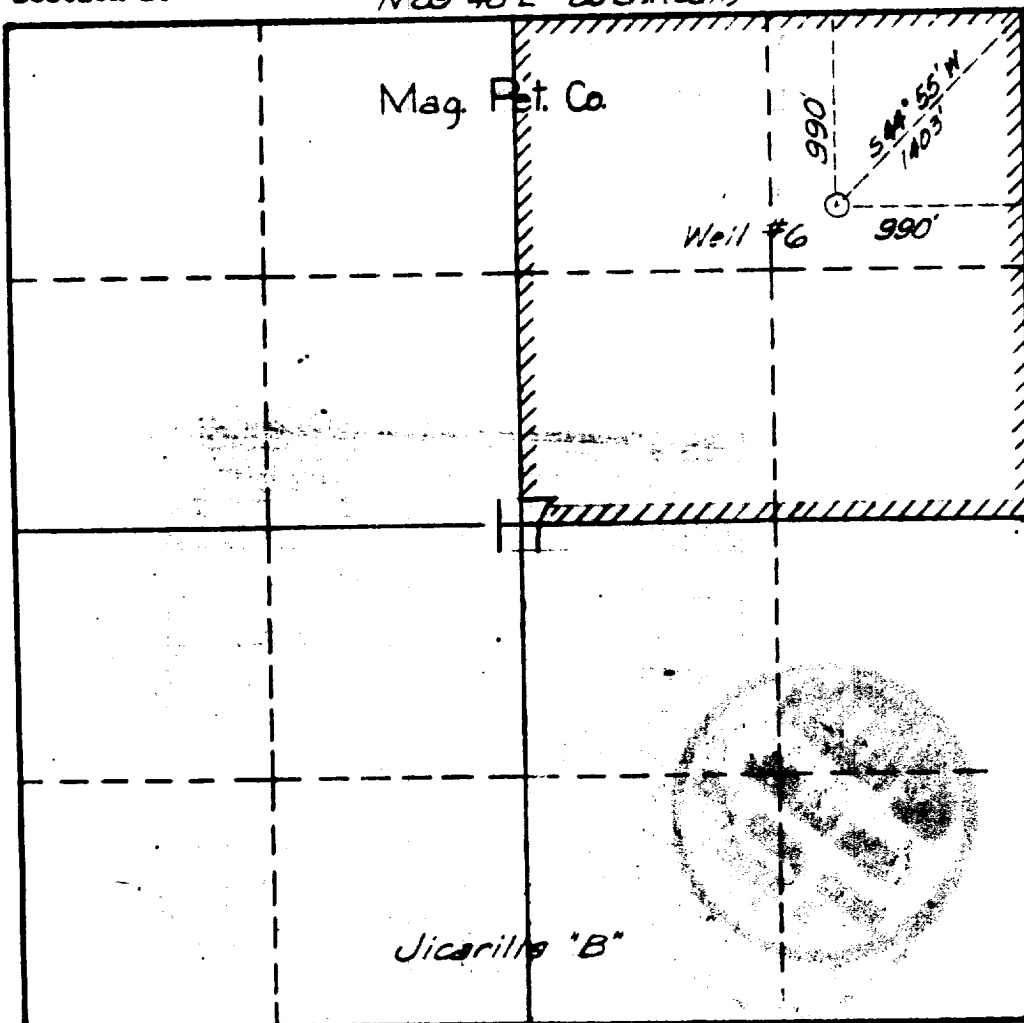
1. Is the Operator the only owner\* in the dedicated acreage outlined on the plat below?  
Yes X No       .
2. If the answer to question one is "no," have the interests of all the owners been consolidated by communitization agreement or otherwise? Yes        No       . If answer is "yes," Type of Consolidation
3. If the answer to question two is "no," list all the owners and their respective interests below:

Owner

Land Description

Section B.

N 89° 48' E - 80 ch. (Call)



This is to certify that the information in Section A above is true and complete to the best of my knowledge and belief.

MAGNOLIA PETROLEUM COMPANY  
(Operator)

By Young, Jr.  
(Representative)

Box 2406, Hobbs, New Mexico  
Address

This is to certify that the well location shown on the plat in Section B was plotted from field notes of actual surveys made by me or under my supervision and that the same is true and correct to the best of my knowledge and belief.

Date Surveyed Sept. 24, 1957

Carl E. Turner  
Registered Professional  
Engineer and/or Land Surveyor

Certificate No. 2130

Commissioner of the  
Bureau of Land Management

Enclosed for the  
Bureau of Land Management  
are two copies of a  
report on the  
land use survey of  
the area within the  
boundary of the  
National Monument  
located in the  
State of Arizona.  
The report was  
prepared by the  
Bureau of Land  
Management and  
the United States  
Forest Service.  
The report contains  
a description of the  
land use survey  
and the results of  
the survey. The  
report also contains  
a map of the area  
surveyed and a  
list of the land  
owners. The report  
is being submitted  
to you for your  
information and  
approval.

U.S. DEPARTMENT OF AGRICULTURE	
BUREAU OF LAND MANAGEMENT	
AZTEC DISTRICT OFFICE	
No. Copies Received: 3	
DISTRIBUTION	
NO. COPIES	TO
1	Director, BLM
1	Assistant Director, BLM
1	Chief, AZTEC District Office
1	Chief, Phoenix District Office
1	Chief, Tucson District Office
1	Chief, Flagstaff District Office
1	Chief, Grand Canyon District Office
1	Chief, Navajo District Office
1	Chief, Hopi District Office
1	Chief, Zuni District Office
1	Chief, Santa Fe District Office
1	Chief, Albuquerque District Office
1	Chief, El Paso District Office
1	Chief, San Antonio District Office
1	Chief, Austin District Office
1	Chief, Dallas District Office
1	Chief, Fort Worth District Office
1	Chief, Houston District Office
1	Chief, San Diego District Office
1	Chief, Los Angeles District Office
1	Chief, San Francisco District Office
1	Chief, Sacramento District Office
1	Chief, San Jose District Office
1	Chief, San Francisco District Office
1	Chief, San Francisco District Office