

NEW MEXICO OIL CONSERVATION COMMISSION
WELL LOCATION AND ACREAGE DEDICATION PLAT

Form O-102
Supersedes C-128
Effective 1-1-65

All distances must be from the outer boundaries of the Section.

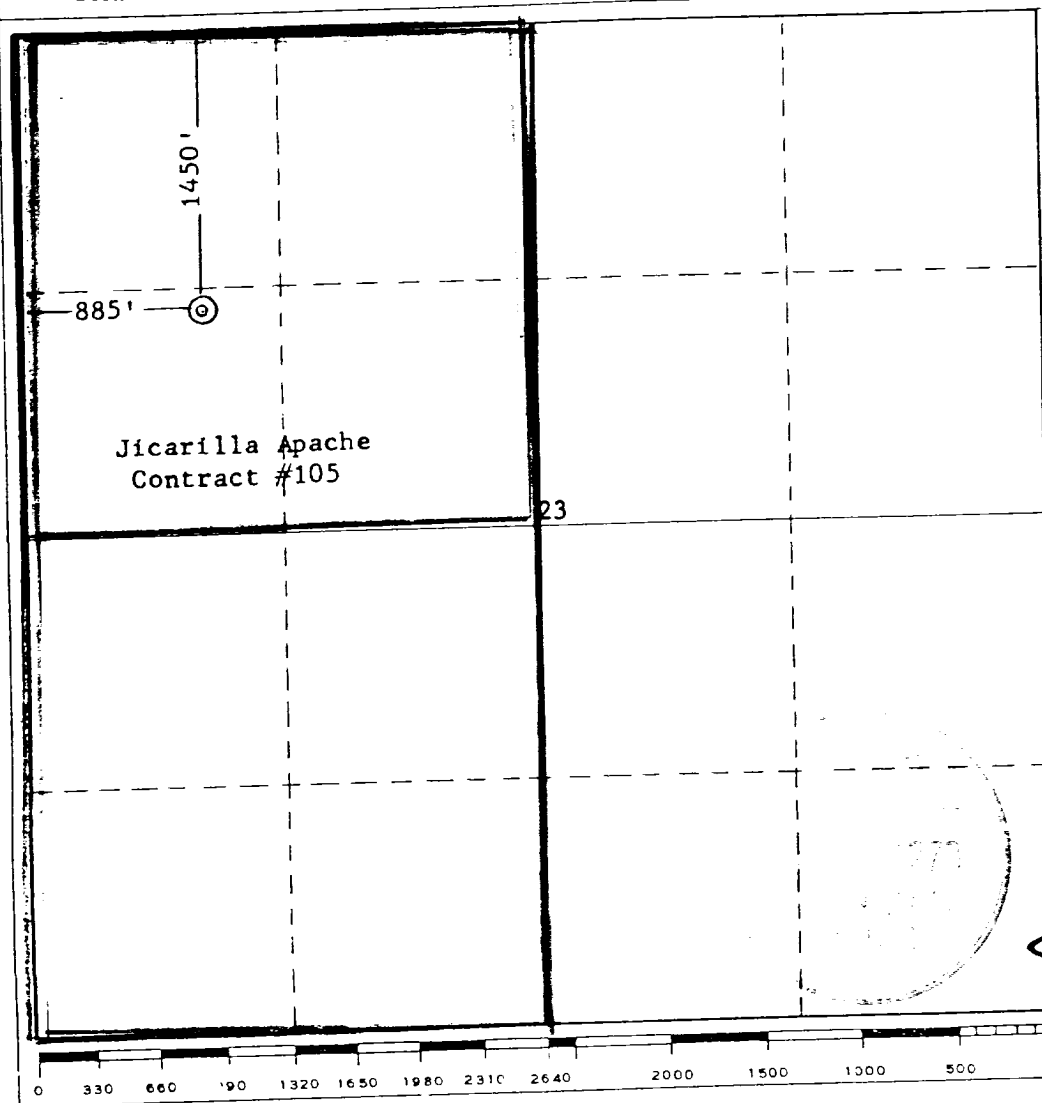
Operator Supron Energy Corporation		Lease JICARILLA "A"		Well No. 8
Unit Letter E	Section 23	Township 26 North	Range 4 West	County Rio Arriba
Actual Footage Location of Well: 1450 feet from the NORTH line and 885 feet from the WEST line				
Ground Level Elev. 6863.0	Producing Formation Dakota, Mesaverde & Gallup		Pool Basin Dakota, Blanco Mv. & Wild Horse Gallup	Dedicated Acreage: 320 W/2 Dakota & Mv. 160 NW/4 Gallup acres

1. Outline the acreage dedicated to the subject well by colored pencil or hachure marks on the plat below.
2. If more than one lease is dedicated to the well, outline each and identify the ownership thereof (both as to working interest and royalty).
3. If more than one lease of different ownership is dedicated to the well, have the interests of all owners been consolidated by communitization, unitization, force-pooling, etc?

☒ Yes ☐ No If answer is "yes," type of consolidation Communitization

If answer is "no," list the owners and tract descriptions which have actually been consolidated. (Use reverse side of this form if necessary.)

No allowable will be assigned to the well until all interests have been consolidated (by communitization, unitization, forced-pooling, or otherwise) or until a non-standard unit, eliminating such interests, has been approved by the Commission.



CERTIFICATION

I hereby certify that the information contained herein is true and complete to the best of my knowledge and belief.

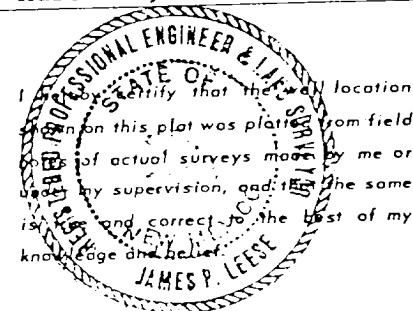
Rudy D. Motto

Name
Rudy D. Motto

Position
Area Superintendent

Company
SUPRON ENERGY CORPORATION

Date
March 22, 1979



Date Surveyed
11 May 1967

Registered Professional Engineer and/or Land Surveyor
James P. Lease

Certificate No.