

UNITED STATES  
DEPARTMENT OF THE INTERIOR  
GEOLOGICAL SURVEY

30-039-20557

APPLICATION FOR PERMIT TO DRILL, DEEPEN, OR PLUG BACK

1a. TYPE OF WORK  
 DRILL  DEEPEN  PLUG BACK

b. TYPE OF WELL  
 OIL WELL  GAS WELL  OTHER   
 SINGLE ZONE  MULTIPLE ZONE

2. NAME OF OPERATOR  
 Continental Oil Company

3. ADDRESS OF OPERATOR  
 152 North Durbin, Casper, Wyoming 82601

4. LOCATION OF WELL (Report location clearly and in accordance with any State requirements.)\*  
 At surface  
 At proposed prod. zone 1850' FNL 1850' FEL

14. DISTANCE IN MILES AND DIRECTION FROM NEAREST TOWN OR POST OFFICE\*

15. DISTANCE FROM PROPOSED\* LOCATION TO NEAREST PROPERTY OR LEASE LINE, FT. (Also to nearest drig. unit line, if any)

16. NO. OF ACRES IN LEASE  
 1440

17. NO. OF ACRES ASSIGNED TO THIS WELL  
 320 - 1

18. DISTANCE FROM PROPOSED LOCATION\* TO NEAREST WELL, DRILLING, COMPLETED, OR APPLIED FOR, ON THIS LEASE, FT.

19. PROPOSED DEPTH  
 6100'

20. ROTARY OR CABLE TOOLS  
 Rotary

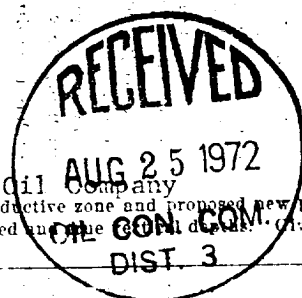
21. ELEVATIONS (Show whether DF, ET, GR, etc.)  
 7014 GR

22. APPROX. DATE WORK WILL START\*  
 September 8, 1972

23. PROPOSED CASING AND CEMENTING PROGRAM

SIZE OF HOLE	SIZE OF CASING	WEIGHT PER FOOT	SETTING DEPTH	QUANTITY OF CEMENT
12 1/4"	8 5/8"	24#	200'	To surface
7 7/8"	4 1/2"	9.5#	6100'	400 sacks -

We propose to drill and equip AXI Apache "K" No. 6 to a total depth of 6100' with rotary tools. No DST's or cores are planned and all appropriate logs will be run. If commercial production exists, the casing will be set as indicated above. The well will be selectively perforated and acidized. The drilling rig will be equipped with a blowout preventor.



USGS Durango (6) Aztec (2) File (2) Humble Oil Company  
 IN ABOVE SPACE DESCRIBE PROPOSED PROGRAM: If proposal is to deepen or plug back, give data on present productive zone and proposed new productive zone. If proposal is to drill or deepen directionally, give pertinent data on subsurface locations and measured depth. Give blowout preventer program, if any.

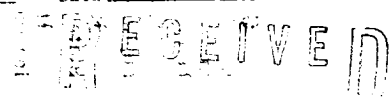
24. SIGNED J.A. Kibben TITLE Administrative Supervisor DATE August 21, 1972

(This space for Federal or State office use)

PERMIT NO. \_\_\_\_\_ APPROVAL DATE \_\_\_\_\_

APPROVED BY cm TITLE \_\_\_\_\_ DATE \_\_\_\_\_  
 CONDITIONS OF APPROVAL, IF ANY:

\*See Instructions On Reverse Side



AUG 24 1972  
 U. S. GEOLOGICAL SURVEY

**NEW MEXICO OIL CONSERVATION COMMISSION  
WELL LOCATION AND ACERAGE DEDICATION PLAT**

All distances must be from the outer boundaries of the Section

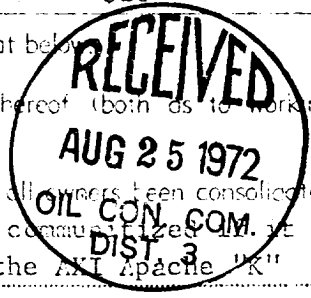
Operator: CONTINENTAL OIL COMPANY      Lease: A N I APACHE "K"      Well No: 6

Unit Letter: G      Section: 9      Township: 26 NORTH      Range: 5 WEST      County: RIO ARriba

Actual Package Location of Well: 1850 feet from the NORTH line and 1850 feet from the EAST line

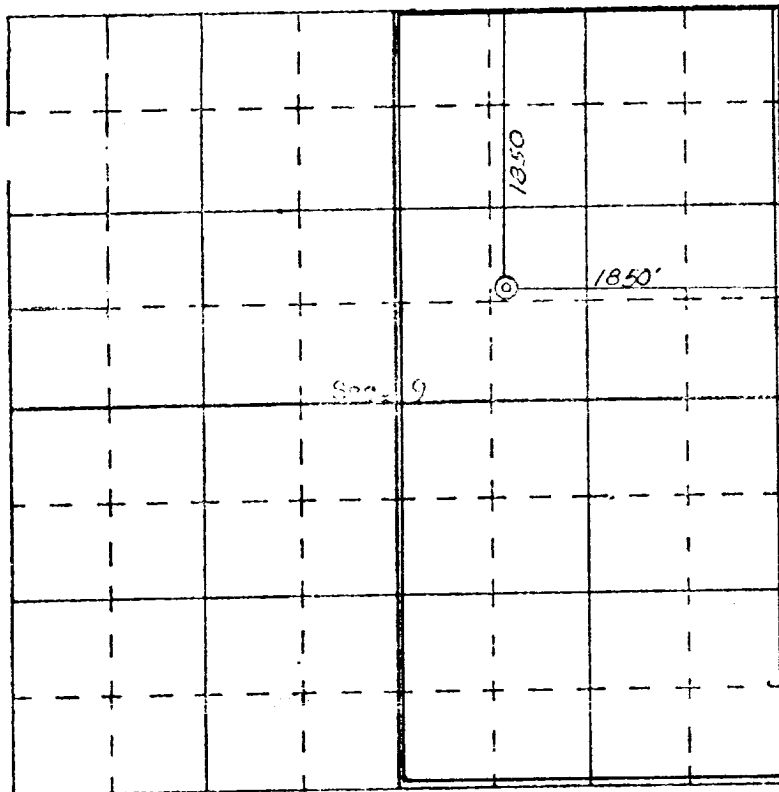
Ground Area: 7014.0 Acres      Mesa Verde      Blanco Mesa Verde      320 Acres

- Outline the acreage dedicated to the subject well by colored pencil or hatchure marks on the plat below.
  - If more than one lease is dedicated to the well, outline each and identify the ownership thereof (both as to working interest and royalty).
  - If more than one lease of different ownership is dedicated to the well, have the interests of all owners been consolidated by communitization, unitization, force-pooling, etc? This lease will be communitized. It is not already under the A N I Apache "K" Agreement.
- (  ) Yes      ( ) No      If answer is "yes," type of consolidation: not already under the A N I Apache "K" Agreement.
- If answer is "no," list the owners and tract descriptions which have actually consolidated. (Use reverse side of this form if necessary.)
- No allowable will be assigned to the well until all interests have been consolidated (by communitization, unitization, forced-pooling, or otherwise) or until a non standard unit, eliminating such interests, has been approved by the Commission.



AUG 24 1972

U. S. GEOLOGICAL SURVEY  
DURANGO, COLO.



SCALE—4 INCHES EQUALS 1 MILE

**SAN JUAN ENGINEERING COMPANY, FARMINGTON, N. M.**

**CERTIFICATION**

I hereby certify that the information contained herein is true and complete to the best of my knowledge and belief.

Name: J. A. Ubben  
 Position: Administrative Supervisor  
 Company: Continental Oil Company  
 Date: August 21, 1972

I hereby certify that the well location shown on this plat was plotted from field notes of actual surveys made by me or under my supervision, and that the same is true and correct to the best of my knowledge and belief.

Date: 11/23/72  
 Signature: [Signature]  
 Title: Professional Engineer and Land Surveyor  
 License No.: 1163  
 Certificate No. [Blank]