

UNITED STATES
DEPARTMENT OF THE INTERIOR
GEOLOGICAL SURVEY

30-039-21104

APPLICATION FOR PERMIT TO DRILL, DEEPEN, OR PLUG BACK

1a. TYPE OF WORK

DRILL ☒DEEPEN ☐PLUG BACK ☐

b. TYPE OF WELL

OIL
WELL ☐GAS
WELL ☒

OTHER

SINGLE
ZONE ☐MULTIPLE
ZONE ☒

2. NAME OF OPERATOR

Caulkins Oil Company

3. ADDRESS OF OPERATOR

Post Office Box 780, Farmington, New Mexico

4. LOCATION OF WELL (Report location clearly and in accordance with any requirements of the State)

At surface

790 from the South and 820 from the West

At proposed prod. zone

Same

14. DISTANCE IN MILES AND DIRECTION FROM NEAREST TOWN OR POST OFFICE

40 miles Southeast of Blanco, New Mexico

15. DISTANCE FROM PROPOSED*

LOCATION TO NEAREST
PROPERTY OR LEASE LINE, FT.
(Also to nearest drlg. unit line, if any)

790

18. DISTANCE FROM PROPOSED LOCATION*

TO NEAREST WELL, DRILLING, COMPLETED,
OR APPLIED FOR, ON THIS LEASE, FT.

3500

16. NO. OF ACRES IN LEASE

640

19. PROPOSED DEPTH

4100

17. NO. OF ACRES ASSIGNED
TO THIS WELL

160

20. ROTARY OR CABLE TOOLS

Rotary

21. ELEVATIONS (Show whether DF, RT, GR, etc.)

6623 Ground

22. APPROX. DATE WORK WILL START*

June 15, 1975

23.

PROPOSED CASING AND CEMENTING PROGRAM

SIZE OF HOLE	SIZE OF CASING	WEIGHT PER FOOT	SETTING DEPTH	QUANTITY OF CEMENT
12 3/4"	8 5/8	24	120	Sufficient to circulate
7 7/8"	X XXXX 2 4 1/2	10.5	4100	Approx. 400 sacks.

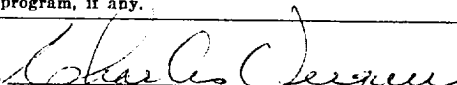
It is proposed to drill well to approx. 4100'. 4 1/2" casing will be run to TD and cemented with sufficient cement to cover Alamo Sand. After cement sets 120 hrs. or more, casing will be perforated opposite Chacra Sand and then sand water fraced with approx. 50,000# sand. Bridge plug will be set above Chacra perforations and then Pictured Cliffs will be perforated and sand water fraced. Bridge plug will be drilled out then permanent type production packer will be set at approx. 3900'. 1 1/4" 2.4# IJ tubing will be run to production packer for Chacra production. 1" non-EUE 10rd thd. tubing will be run to top of Pictured Cliffs pay.

A pressure operated double blowout preventor will be in use at all times while drilling below 120'.

IN ABOVE SPACE DESCRIBE PROPOSED PROGRAM: If proposal is to deepen or plug back, give data on present productive zone and proposed new productive zone. If proposal is to drill or deepen directionally, give pertinent data on subsurface locations and measured and true vertical depths. Give blowout preventer program, if any.

24.

SIGNED



TITLE

Superintendent

DATE

May 18, 1975

(This space for Federal or State office use)

PERMIT NO.

APPROVAL DATE

APPROVED BY



TITLE

DATE

CONDITIONS OF APPROVAL, IF ANY:

*See

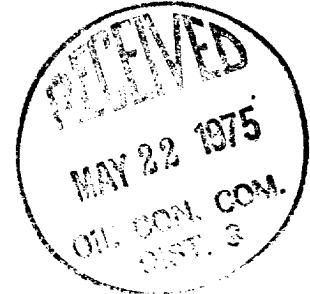
Reverse Side



CAULKINS OIL COMPANY
Post Office Box 780
Farmington, New Mexico

May 18, 1975

United States Dept. of the Interior
Geological Survey
Post Office Box 1809
Durango, Colorado 81301



Gentlemen:

Following is our 12 point development plan for surface use on our well number 5, located in SW 1/4 of Section 25 26N 6W, Rio Arriba County, New Mexico.

- (1) Existing roads now being used to service El Paso Wells Sanders # 1 will be used.
- (2) Approx. 800' of new road will be required for this location. Road will be built on ridge between El Paso Right o way and new location.
- (3) (4) See Topo map attached.
- (5) 8 (9) No tank batteries, airstrip or camp.
- (6) Water will be hauled from Caulkins water hole located in Section 3 26N 6W.
- (7) All cuttings, trash, garbage and etc. will be confined to reserve pit shown on attached layout plat.
- (10) Surface vegetation is Crested Wheat and Native Grama. Completed drilling pad will be compacted.
- (11) Reserve pit will be cleaned up and leveled then complete location area will be reseeded with BLM approved seed mixture.
- (12) Location will be on gentle hillside. Approx. 5' cut on high side of location will be required.

Yours very truly,


CAULKINS OIL COMPANY

NEW MEXICO OIL CONSERVATION COMMISSION
WELL LOCATION AND ACREAGE DEDICATION PLAT

Form C-102
Supersedes C-128
Effective 1-1-65

All distances must be from the outer boundaries of the Section.

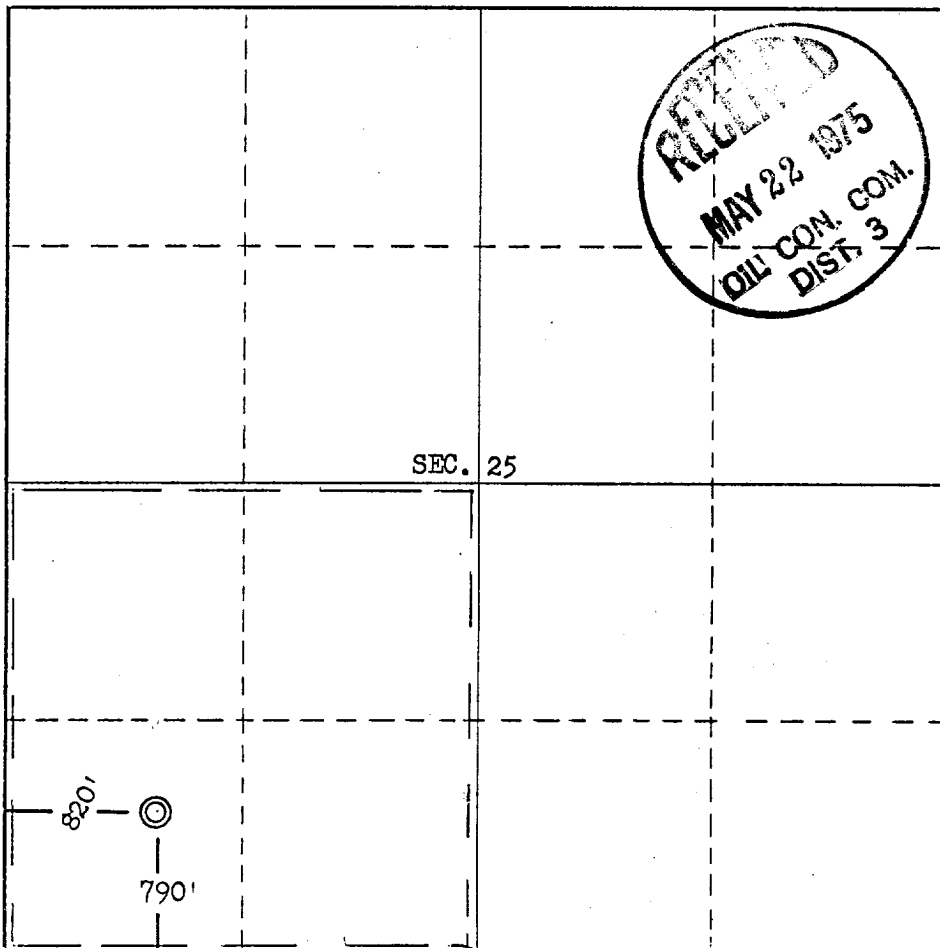
Operator Caulkins Oil Co.			Lease SF 079304		Well No. 5
Unit Letter M	Section 25	Township 26 North	Range 6 West	County Rio Arriba	
Actual Footage Location of Well: 790 feet from the South line and 820 feet from the West line					
Ground Level Elev. 6623'	Producing Formation Pictured Cliffs-Chacra	Pool South Blanco-Otero Chacra	Dedicated Acreage: 160 Acres		

- Outline the acreage dedicated to the subject well by colored pencil or hachure marks on the plat below.
- If more than one lease is dedicated to the well, outline each and identify the ownership thereof (both as to working interest and royalty).
- If more than one lease of different ownership is dedicated to the well, have the interests of all owners been consolidated by communitization, unitization, force-pooling, etc?

☐ Yes ☐ No If answer is "yes," type of consolidation _____

If answer is "no," list the owners and tract descriptions which have actually been consolidated. (Use reverse side of this form if necessary.) _____

No allowable will be assigned to the well until all interests have been consolidated (by communitization, unitization, forced-pooling, or otherwise) or until a non-standard unit, eliminating such interests, has been approved by the Commission.



CERTIFICATION

I hereby certify that the information contained herein is true and complete to the best of my knowledge and belief.

Name Charles E. Dugan
Position
Superintendent

Company
Caulkins Oil Company

Date
May 16, 1975

REGISTERED LAND SURVEYOR
I hereby certify that the well location shown on this plat is plotted from field notes of actual surveys made by me or under my supervision, and that the same is to the best of my knowledge and belief correct.
V. ECHOHAWK

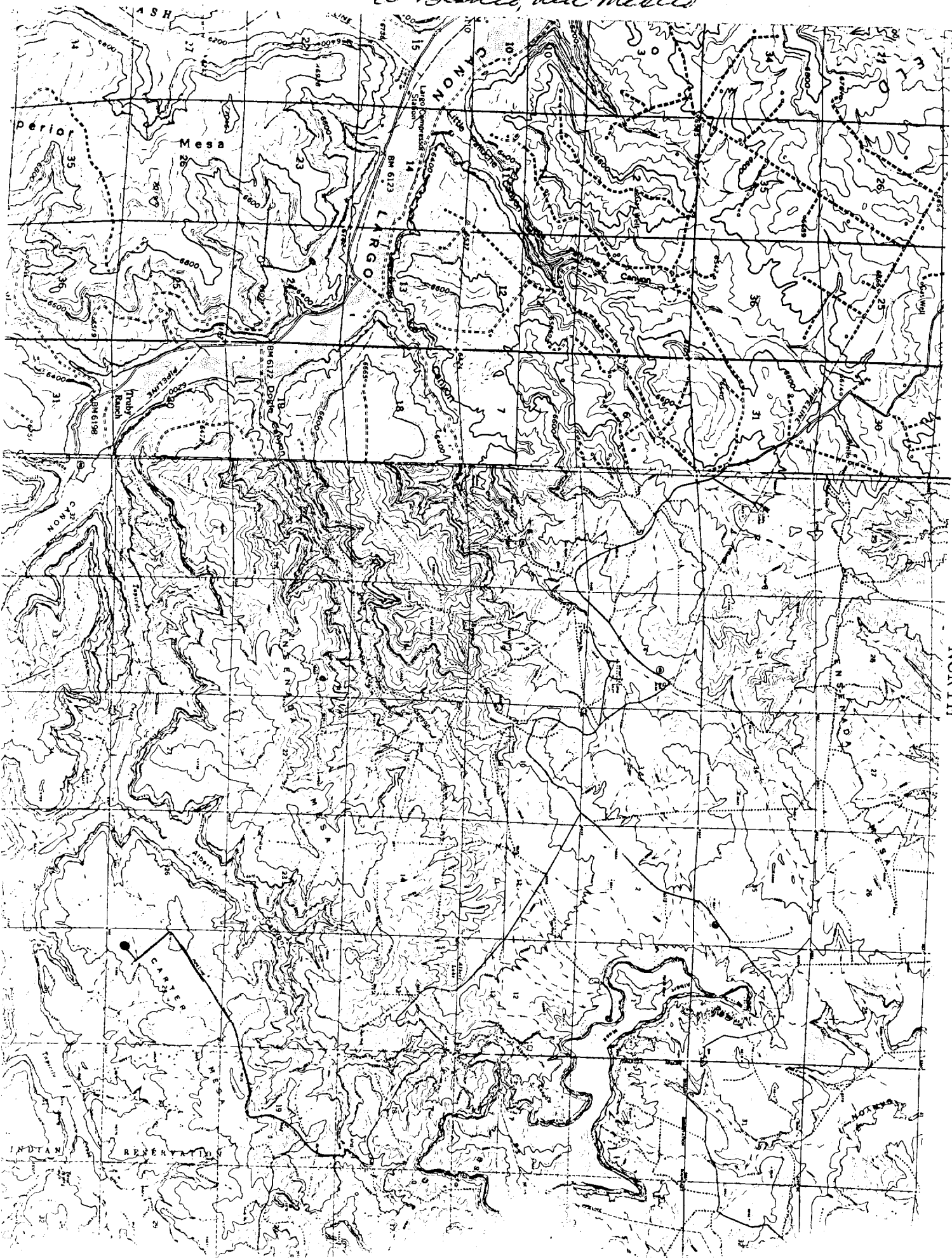
Date Surveyed
May 12, 1975

Registered Professional Engineer and/or Land Surveyor

E. N. Edmundo

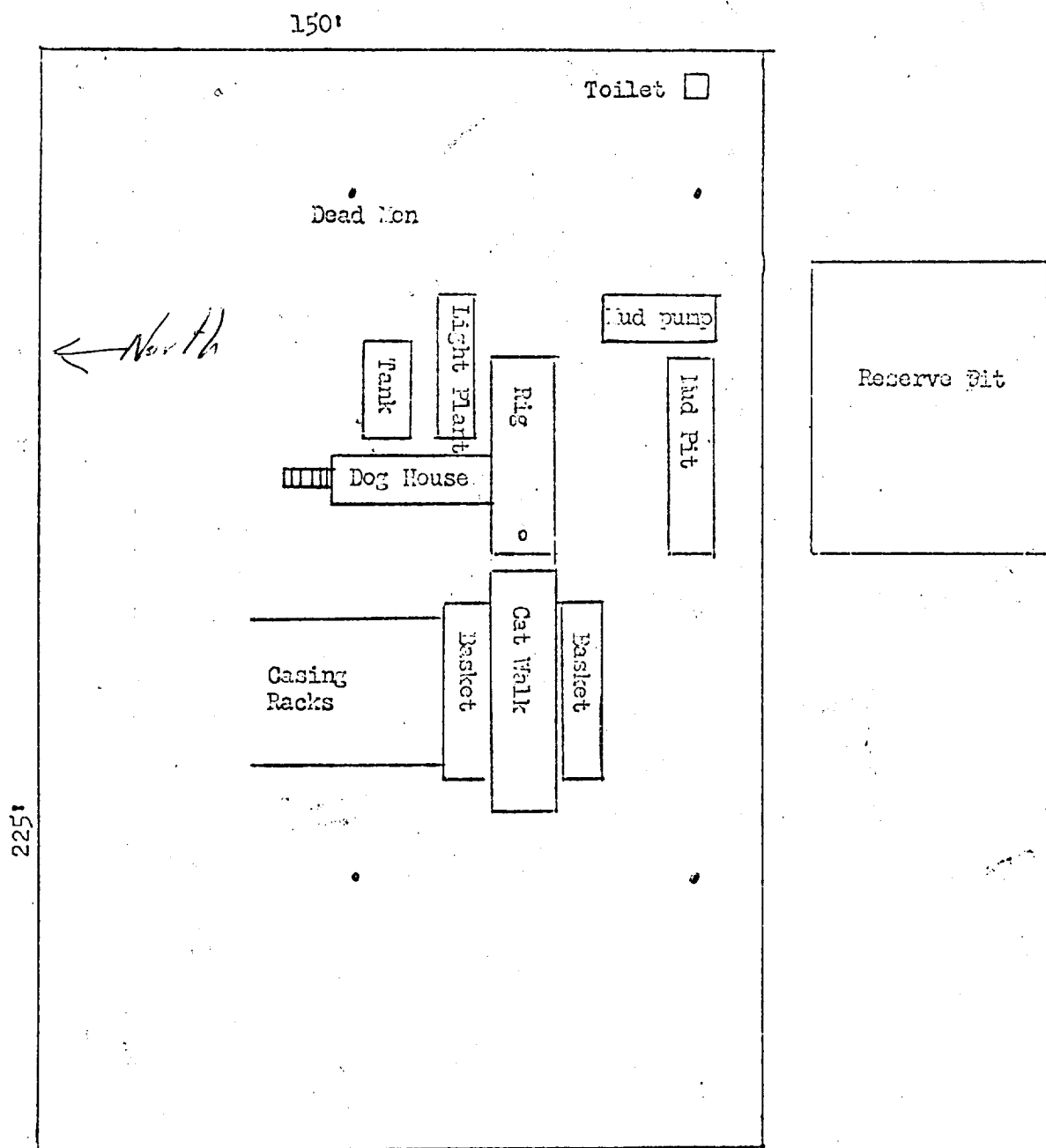
Certificate No. 3602

To Blanco, New Mexico



Trailing #5

NORTH



Scale - 33 1/3 feet per inch

Well Number 5

Located in SW 1/4 Section 25 26N 6W