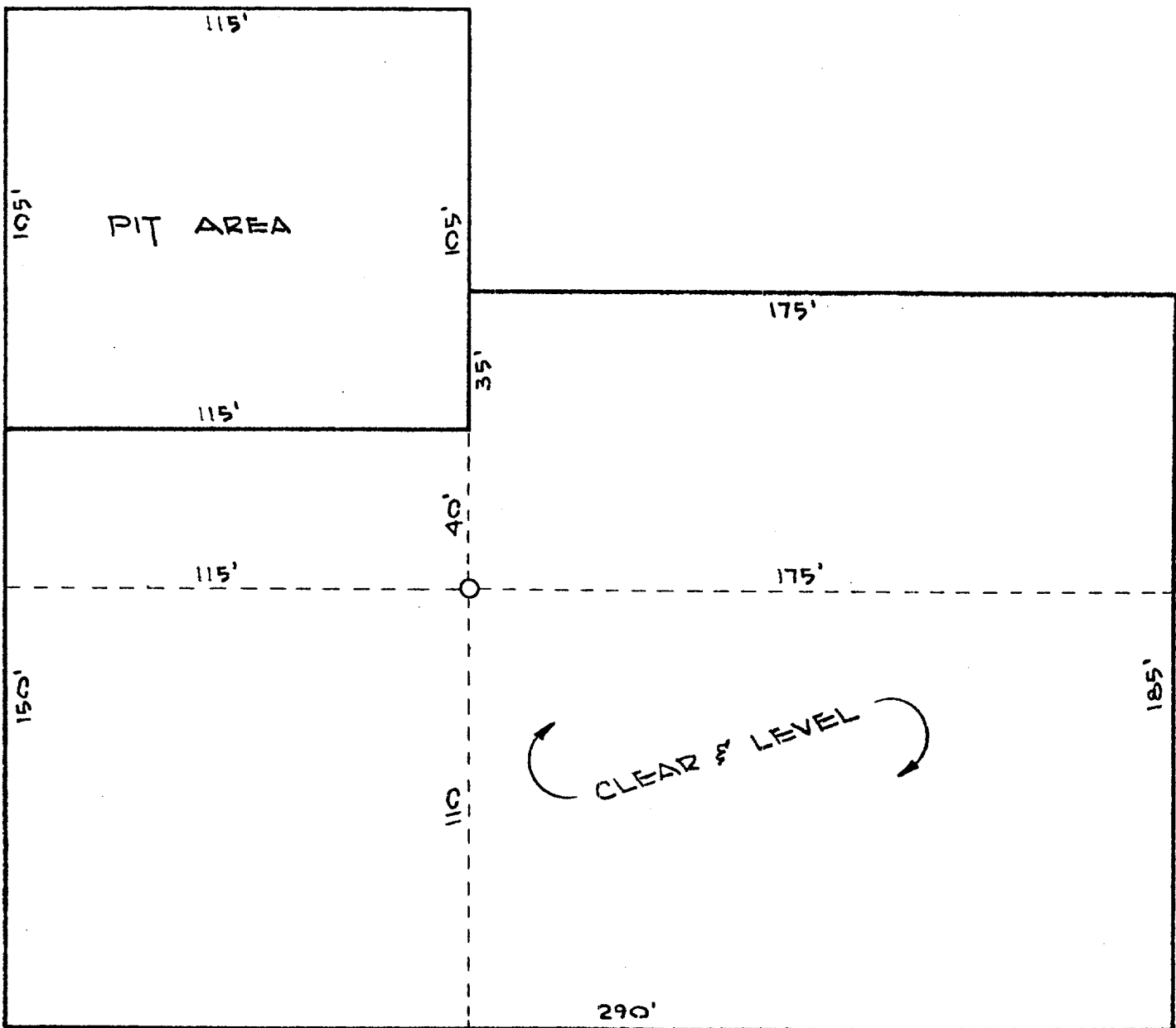


THIS DRAWING AND ALL INFORMATION THEREON
IS THE PROPERTY OF MOBIL OIL CORPORATION AND
SHALL NOT BE COPIED OR USED EXCEPT FOR THE

PURPOSE FOR WHICH IT IS EXPRESSLY FURNISHED.
THE DRAWING AND ANY COPIES THEREON (PARTIAL
OR COMPLETE) SHALL BE RETURNED TO THE OWNER
ON DEMAND.



JICARILLA "B"
1149' FSL
1391' FEL
Sec. 19, T26N, R3W
RIO ARRIBA COUNTY, NEW MEXICO
VEE-DOOR SOUTH

NO.	DATE	BY
JICARILLA MESA VERDE STANDARD LOCATION PLAN RIO ARRIBA NEW MEXICO		
Mobil Oil Corporation Houston E & P Division		
DRAWN J.W.V.	SCALE 1" = 40'	DWG. NO.
CHECKED HBC		1-48-65