

submitted in lieu of Form 3160-5

UNITED STATES  
DEPARTMENT OF THE INTERIOR  
BUREAU OF LAND MANAGEMENT

Sundry Notices and Reports on Wells

1. Type of Well  
GAS

2. Name of Operator  
MERIDIAN OIL

3. Address & Phone No. of Operator  
PO Box 4289, Farmington, NM 87499 (505) 326-9700

4. Location of Well, Footage, Sec., T, R, M  
990'FSL, 990'FEL Sec.20, T-26-N, R-3-W, NMPM

5. Lease Number  
Jic Cont 98  
6. If Indian, All. or  
Tribe Name  
Jicarilla Apache  
7. Unit Agreement Name

8. Well Name & Number  
Jicarilla 98 #3A  
9. API Well No.

10. Field and Pool  
Gavilan PC/  
Blanco MV  
11. County and State  
Rio Arriba Co, NM

12. CHECK APPROPRIATE BOX TO INDICATE NATURE OF NOTICE, REPORT, OTHER DATA

Type of Submission

☒ Notice of Intent  
☐ Subsequent Report  
☐ Final Abandonment

Type of Action

☐ Abandonment  
☐ Recompletion  
☐ Plugging Back  
☐ Casing Repair  
☐ Altering Casing  
☒ Other - pay add  
☐ Change of Plans  
☐ New Construction  
☐ Non-Routine Fracturing  
☐ Water Shut off  
☐ Conversion to Injectio

13. Describe Proposed or Completed Operations

The Pictured Cliffs will be perforated and stimulated in the following manner: TOOH w/tbg. Set RBP above existing M perfs. Run CBL to verify TOC. If good top is not seen at least 50' above proposed top PC perf, remedial cmt work will be performed. The PC will be perf'd 3840-3900' and stimulate w/approx 1500 gal acid and fracture stimulated. Run after frac GR log to verify if frac stayed in zone. TIH w/2 3/8" tbg landed @ 6100 Application being made to NMOCD for commingling. Attached is a procedure and wellbore diagram.

RECEIVED  
MAR 02 1994  
OIL CON. DIV.  
DIST. 3

14. I hereby certify that the foregoing is true and correct.

Signed [Signature] (BA) Title Regulatory Affairs Date 1/6/94

(This space for Federal or State Office use)

APPROVED BY [Signature] Title Acting Area Date 2/10/94  
CONDITION OF APPROVAL, if any: [Signature]

**NEW MEXICO OIL CONSERVATION COMMISSION**  
**WELL LOCATION AND ACREAGE DEDICATION PLAT**

Form C-102  
 Supersedes C-  
 Effective 1-1-6

All distances must be from the outer boundaries of the section.

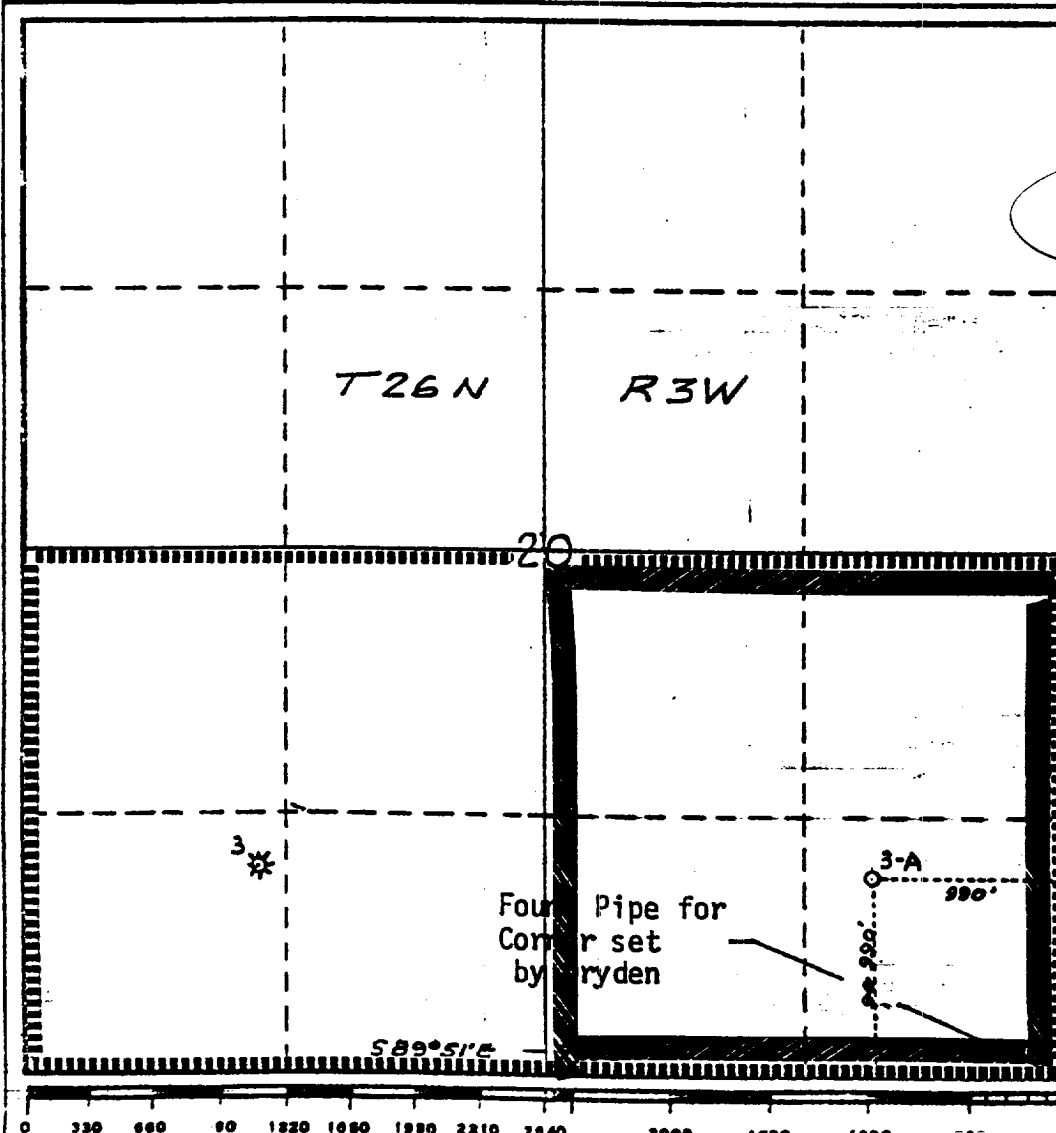
Operator <b>Meridian Oil Inc.</b>			Lease <b>Jicarilla 98</b>		Well No. <b>3A</b>
Unit Letter <b>P</b>	Section <b>20</b>	Township <b>26N</b>	Range <b>3W</b>	County <b>Rio Arriba</b>	
Actual Postage Location of Wells					
<b>990</b>		<b>South</b>		<b>990</b>	
feet from the		line and		feet from the	
				<b>East</b>	
Ground Level Elev. <b>7183</b>	Producing Formation <b>Mesa Verde/Pic.Cliffs</b>		Pool <b>Blanco/Gavilan</b>		Dedicated Acres: <b>320 /160</b>
					Acres

1. Outline the acreage dedicated to the subject well by colored pencil or hatchure marks on the plat below.
2. If more than one lease is dedicated to the well, outline each and identify the ownership thereof (both as to working interest and royalty).
3. If more than one lease of different ownership is dedicated to the well, have the interests of all owners been consolidated by communitization, unitization, force-pooling, etc?

☐ Yes    ☐ No    If answer is "yes," type of consolidation \_\_\_\_\_

If answer is "no," list the owners and tract descriptions which have actually been consolidated. (Use reverse side of this form if necessary.) \_\_\_\_\_

No allowable will be assigned to the well until all interests have been consolidated (by communitization, unitization, forced-pooling, or otherwise) or until a non-standard unit, eliminating such interests, has been approved by the Commission.



**CERTIFICATION**

I hereby certify that the information contained herein is true and complete to the best of my knowledge and belief.

*Peggy Bradfield*  
 Name

**Peggy Bradfield**

Position  
**Regulatory Representative**

Company  
**Meridian Oil Inc.**

Date  
**1-6-94**

I hereby certify that the well location shown on this plat was plotted from field notes of actual surveys made by me or under my supervision, and that the same is true and correct to the best of my knowledge and belief.

Date Surveyed  
**July 26, 1976**

Registered Professional Engineer and/or Land Surveyor

**H. A. Carson, Jr.**

Certificate No.  
**5063**

**JICARILLA 98 #3A**  
Unit P, Section 20, T26N, R03W  
Recommended Recompletion Procedure  
*Pictured Cliffs Pay Add & Completion*

Note: Notify BLM (761-8762) and NMOCD (334-6178) 24 hours prior to rig activity.

---

Inspect location and install and/or test rig anchors. Install 1 - 400 bbl rig tank and fill w/ 2% KCl water. Approximately 199 jts. 2-3/8" 4.7# J-55 tubing will be required (MOI, District Tools) for cleanout and production. Comply with all BLM, NMOCD, Jicarilla Apache, and MOI rules and regulations. Notify engineering when work has commenced. Hold Safety Meetings on a regular basis.

---

1. Install 1 X 400 bbl frac tanks and fill with 2% KCl water.
2. Hold Safety Meeting. MIRU. Place fire and safety equipment in easily accessible locations. NU relief line and blooie line to laydown flow tank. Obtain and record all wellhead pressures.
3. Blow down tubing. If tubing will not blow down, kill well with KCl water. PBTD is 6160'.
4. TOOH with 5684' of 2-3/8" 4.70# tubing, visually inspect and tally tubing.
5. RU wireline. RIH with 4-1/2" 10.5# guage ring and check pipe. PU Baker Model G Retrievable bridge plug, TIH and set bridge plug at 4000' . Run GR - CBL - CCL in 4-1/2 casing from bridge plug to Surface pipe (Did not circ. stg1, Circ. cmt. water, stg 2). TOC must be above 3790' to continue. Evaluate GR - CBL - CCL and send copy to production engineering.
6. TIH w/ treesaver. Pressure test treesaver and casing to 3200 psi. for 15 min. If pressure test fails, prepare to test and repair casing. Contact Production Engineering and a casing repair will be submitted. TOOH with treesaver.

**Pictured Cliffs Stimulation:**

7. Select-Fire Perf. the following intervals w/ 3-1/8" HSC -3125-306, 12 gram Owen charges 0.31" holes w/ 12.02 " penetration:

**3840' - 3900'. (22 Holes)**

8. RD wireline. TIH w/ treesaver.
9. RU stimulation company. **Hold Safety Meeting.** Pressure test surface treating lines to 5000 psi. **Maximum STP during acid job is 3200 psi.** Pump 1,500 gals 15% HCl w/additives at a rate of 4-6 BPM, attempt to ball-out the perforations. Drop a total of 33 7/8" RCN ball sealers (1.3sp.gr.) spaced evenly throughout the job. Record rates and pressures while attempting to achieve ball-out.
10. RD stimulation company. TOOH w/ treesaver. RU wireline, run junk basket to knock-off/retrieve as many ballsealers as possible. TIH w/ treesaver. RU stimulation company. Prepare to fracture stimulate the Pictured Cliffs.
11. Pressure test surface treating lines to 5000 psi. **Maximum treating pressure is 3200 psi.** Fracture and tag the PC according to the attached procedure. Flow-back the well immediately using a variable choke manifold. Increase choke size as needed to keep the well from logging off, if possible. When pressures and flow rates allow, TOOH w/ treesaver.

**Jicarilla 98 #3A  
Pictured Cliffs Pay-Add**

12. TIH w/ retrieving head and 2-3/8" 4.70# workstring and clean out to the retrievable bridge plug @ 4000' with air until sand production is minimal. Obtain pitot gauge for the Pictured Cliffs formation. Record pitot gauge as the Pictured Cliffs formation only. Latch onto the retrievable bridge plug and TOOH.
13. RU wireline, run After-frac Tracer Survey-GammaRay (report if frac stayed in zone, if possible), POOH. RD wireline. Send copy of logs to Production Engineering.
14. TIH w/ one joint 2-3/8" 4.7# J-55 tubing, seating nipple, and 2-3/8" production tubing. Cleanout to 6160' with air. Land tubing @ +/-6100' (60' of rathole) and obtain final pitot gauge. ND BOP, NU WH. Contact Production Operations for well tie-in. RD and MOL.

Approved: \_\_\_\_\_  
Drilling Superintendent

**Suggested Vendors:**

Wireline:	Petro Wireline	326-6669
Radioactive Tag:	ProTechnics, Intl	326-7133
Tubing:	MOI, District Tools	326-9826
Stimulation:	WCNA	327-6222
Treesaver:	WIT	599-5609
Production Oper.:	Bruce Voiles	326-9571
Engineering:	Brian Ault	326-9871 w 326-6613 h

# Jicarilla 98 #3A

Unit P, Sec. 20, T26N, R3W

*Pictured Cliffs Pay Add and Stimulation*

**CURRENT**

**PROPOSED**

8-5/8" 20.0# ST & C CSG  
SET @ 287'  
CIRC. CMT TO SURFACE

8-5/8" 20.0# ST & C CSG  
SET @ 287'  
CIRC. CMT TO SURFACE

2-3/8" 4.7# J-55 tubing set @ 5684'

2-3/8" 4.7# J-55 tubing set @ +/- 6130'

OJO ALAMO @ 3400'  
(Approx.)

PICTURED CLIFFS @ 3840'  
(Main)

LEWIS SHALE @ 3900'

**Proposed Pictured Cliffs  
perforations: 3840' - 3900'**

DV tool @ 4099'

CLIFFHOUSE @ 5583'  
MENELEE @ 5678'

PT. LOOKOUT @ 6002'

MANCOS @ 6138'

Existing  
MV PERFS  
5584' - 6136'

4-1/2" 10.5# K-55 8RD CSG SET @ 6172'

TD 6172'

TD 6172'