

UNITED STATES
DEPARTMENT OF THE INTERIOR
GEOLOGICAL SURVEY

APPLICATION FOR PERMIT TO DRILL, DEEPEN, OR PLUG BACK

1a. TYPE OF WORK

DRILL ☒DEEPEN ☐PLUG BACK ☐

b. TYPE OF WELL

OIL
WELL ☐GAS
WELL ☒OTHER ☐SINGLE
ZONE ☒MULTIPLE
ZONE ☐

2. NAME OF OPERATOR

Northwest Production Corporation

3. ADDRESS OF OPERATOR

PO Box 990, Farmington, NM 87401

4. LOCATION OF WELL (Report location clearly and in accordance with any State requirements.)

At surface

1030'S, 1700'E

At proposed prod. zone

14. DISTANCE IN MILES AND DIRECTION FROM NEAREST TOWN OR POST OFFICE*

15. DISTANCE FROM PROPOSED*

LOCATION TO NEAREST
PROPERTY OR LEASE LINE, FT.
(Also to nearest drg. unit line, if any)18. DISTANCE FROM PROPOSED LOCATION*
TO NEAREST WELL, DRILLING, COMPLETED,
OR APPLIED FOR, ON THIS LEASE, FT.

21. ELEVATIONS (Show whether DF, RT, GR, etc.)

6802' GL

16. NO. OF ACRES IN LEASE

17. NO. OF ACRES ASSIGNED
TO THIS WELL

320.00 ✓

19. PROPOSED DEPTH

6035'

20. ROTARY OR CABLE TOOLS

Rotary

22. APPROX. DATE WORK WILL START*

23.

PROPOSED CASING AND CEMENTING PROGRAM

SIZE OF HOLE	SIZE OF CASING	WEIGHT PER FOOT	SETTING DEPTH	QUANTITY OF CEMENT
13 3/4"	9 5/8"	32.3# H-40	200'	224 cu.ft. to circulate
8 3/4"	7"	20# K-55	3795'	195 cu.ft. to cover Ojo Alamo
6 1/4"	4 1/2"	10.5# K-55	3600-6035'	424 cu.ft. to fill to 3600'

Selectively perforate and sandwater fracture the Mesa Verde formation

A 3000 psi WP and 6000 psi test double gate preventer equipped with blind and pipe rams will be used for blow out prevention on this well.

This gas is dedicated.

The E/2 of Section 8 is dedicated to this well.

IN ABOVE SPACE DESCRIBE PROPOSED PROGRAM: If proposal is to deepen or plug back, give data on present productive zone and proposed new productive zone. If proposal is to drill or deepen directionally, give pertinent data on subsurface locations and measured and true vertical depths. Give blowout preventer program, if any.

24.

SIGNED

St. J. Briscoe

TITLE

Drilling Clerk

DATE December 16, 1970

(This space for Federal or State office use)

PERMIT NO.

APPROVAL DATE

APPROVED BY

TITLE

DATE

CONDITIONS OF APPROVAL, IF ANY:

OK

*See Instructions On Reverse Side

**NEW MEXICO OIL CONSERVATION COMMISSION
WELL LOCATION AND ACREAGE DEDICATION PLAT**

Form C-102
Supersedes C-128
Effective 1-1-65

All distances must be from the outer boundaries of the Section.

Operator NORTHWEST PRODUCTION CORPORATION		Lease JICARILLA 119 N		JICARILLA APACHE TRIBAL CONT. 119		Well No. 7A
Unit Letter 0	Section 8	Township 26-N	Range 4-W	County RIO ARriba		
Actual Footage Location of Well: <div style="display: flex; justify-content: space-between;"> 1030 feet from the SOUTH line and 1700 feet from the EAST line </div>						
Ground Level Elev. 6802	Producing Formation MESA VERDE		Pool BLANCO MESA VERDE ✓		Dedicated Acreage: 320.00 ✓ Acres	

1. Outline the acreage dedicated to the subject well by colored pencil or hachure marks on the plat below.
2. If more than one lease is dedicated to the well, outline each and identify the ownership thereof (both as to working interest and royalty).
3. If more than one lease of different ownership is dedicated to the well, have the interests of all owners been consolidated by communitization, unitization, force-pooling, etc?

☐ Yes ☐ No If answer is "yes," type of consolidation _____

If answer is "no," list the owners and tract descriptions which have actually been consolidated. (Use reverse side of this form if necessary.) _____

No allowable will be assigned to the well until all interests have been consolidated (by communitization, unitization, forced-pooling, or otherwise) or until a non-standard unit, eliminating such interests, has been approved by the Commission.

<p align="center">SECTION 8</p> <p align="center">JICARILLA APACHE TRIBAL CONTRACT #-119</p> <p align="center">1700'</p> <p align="center">1030'</p>	<p align="center">CERTIFICATION</p> <p>I hereby certify that the information contained herein is true and complete to the best of my knowledge and belief.</p> <p align="center">Original Signed by</p> <p>Name <u>D. G. [Signature]</u></p> <p>Drilling Clerk</p> <p>Position _____</p> <p>Northwest Production Corp.</p> <p>Company _____</p> <p>December 16, 1976</p> <p>Date _____</p> <p>I hereby certify that the well location shown on this plat was plotted from field notes of actual surveys made by me or under my supervision, and that the same is true and correct to the best of my knowledge and belief.</p> <p>Date Surveyed OCTOBER 26, 1976</p> <p>Registered Professional Engineer and/or Land Surveyor</p> <p align="right"><i>[Signature]</i></p> <p>Certificate No. 1760</p>

0 330 660 990 1320 1650 1980 2310 2640 2970 3300 3630 3960 4290 4620 4950 5280 5610 5940 6270 6600

Multi-Point Surface Use Plan
Jicarilla 119 N #7A
Northwest Production Corporation

DEC 8 1963

1. Existing Road - Please refer to Map No. 1 which shows the existing roads. New roads which will be required have been marked on this map. All existing and new roads will be properly maintained during the duration of this project.
2. Planned Access Roads - Please refer to Map No. 1. The grade of the access roads will be consistent with that of the local terrain. The road surface will not exceed thirty feet (30') in width. Upon completion of the project, the access road will be adequately drained to control soil erosion. Drainage facilities may include ditches, water bars, culverts or any other measure deemed necessary by trained Company personnel to insure proper drainage. Gates and/or cattleguards will be installed if necessary.
3. Location of Existing Wells - Please refer to Map No. 1
4. Location of Tank Batteries, Production Facilities, and Production Gathering and Service Lines - Please refer to Maps No. 1 and No. 2. Map No. 2 shows the existing and proposed gas gathering lines. Map No. 1 shows the existing roads and new proposed access roads. All known production facilities are shown on these two maps.
5. Location and Type of Water Supply - Water for the proposed project will be obtained from a water hole located in SE/4 Section 17, T-26-N, R-4-W (Jicarilla Bull Water Hole)
6. Source of Construction Materials - No additional materials will be required to build either the access road or the proposed location.

7. Methods of Handling Waste Materials - All garbage and trash materials will be put into a burn pit shown on the attached Location Plat No. 1. When clean-up operations are begun on the proposed project, the burn pit with its refuse will be buried to a depth of at least three feet (3'). A latrine, the location of which is also shown on Plat No. 1 will be provided for human waste. If large amounts of liquids are left in the reserve pit after completion of the project, the pit will be fenced until the liquids have had adequate time to dry. The location clean-up will not take place until such time as the reserve pit can be properly covered over to prevent run-off from carrying any of these materials into the watershed. No earthen pit will be located on natural drainages; all earthen pits will be so constructed as to prevent leakage from occurring.
8. Ancillary Facilities - No camps or airstrips will be associated with this project.
9. Wellsite Layout - Please refer to the attached Plat No. 1.
10. Plans for Restoration of the Surface - After completion of the proposed project, the location will be cleaned and leveled. The location will be left in such a condition that will enable reseeding operations to be carried out as prescribed by either the governmental regulatory agency or land owner and El Paso Natural Gas Company. The reseeding operation will be performed during the time period set forth by the regulatory body. The location production equipment will be painted the color or colors designated by the proper governmental agency.
11. Other Information - The immediate area is covered with sage brush flats and washes. The only natural vegetation is sagebrush. There are cows and horses grazing on the proposed project site.

12. Operator's Representative - W. D. Dawson, Post Office Box 990,
Farmington, New Mexico 87401
13. Certification - I hereby certify that I, or persons under
my direct supervision, have inspected the
proposed drillsite and access route; that
I am familiar with the conditions which
presently exist; that the statements made
in this plan are, to the best of my knowledge,
true and correct; and, that the work associated
with the operations proposed herein will be
performed by El Paso Natural Gas Company and
its contractors and sub-contractors in conformity
with this plan and the terms and conditions under
which it is approved.



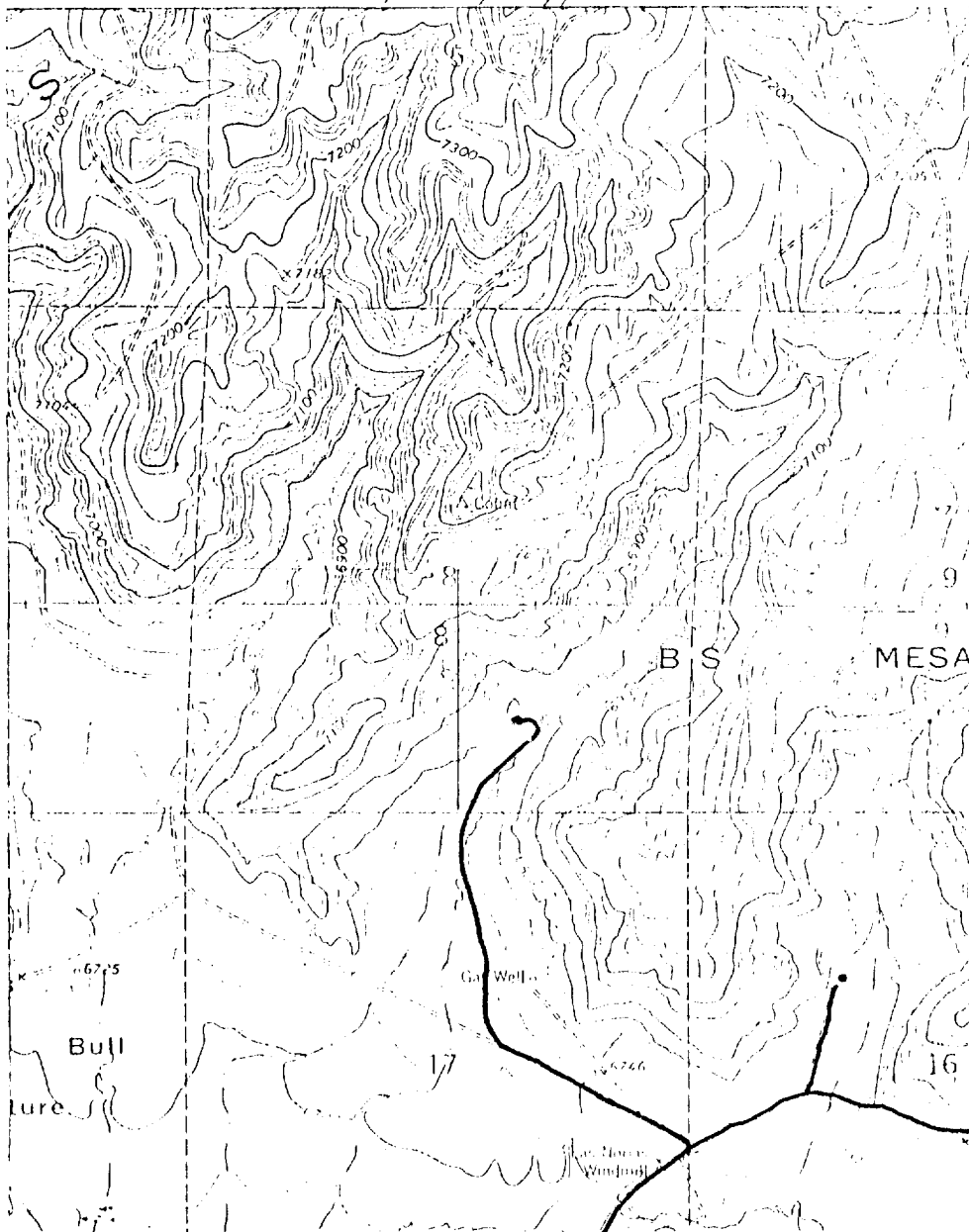
D. R. Read
Division Drilling Engineer



Gas well 11/17/78
 8-26-78

11/17/78

1
 26
 78

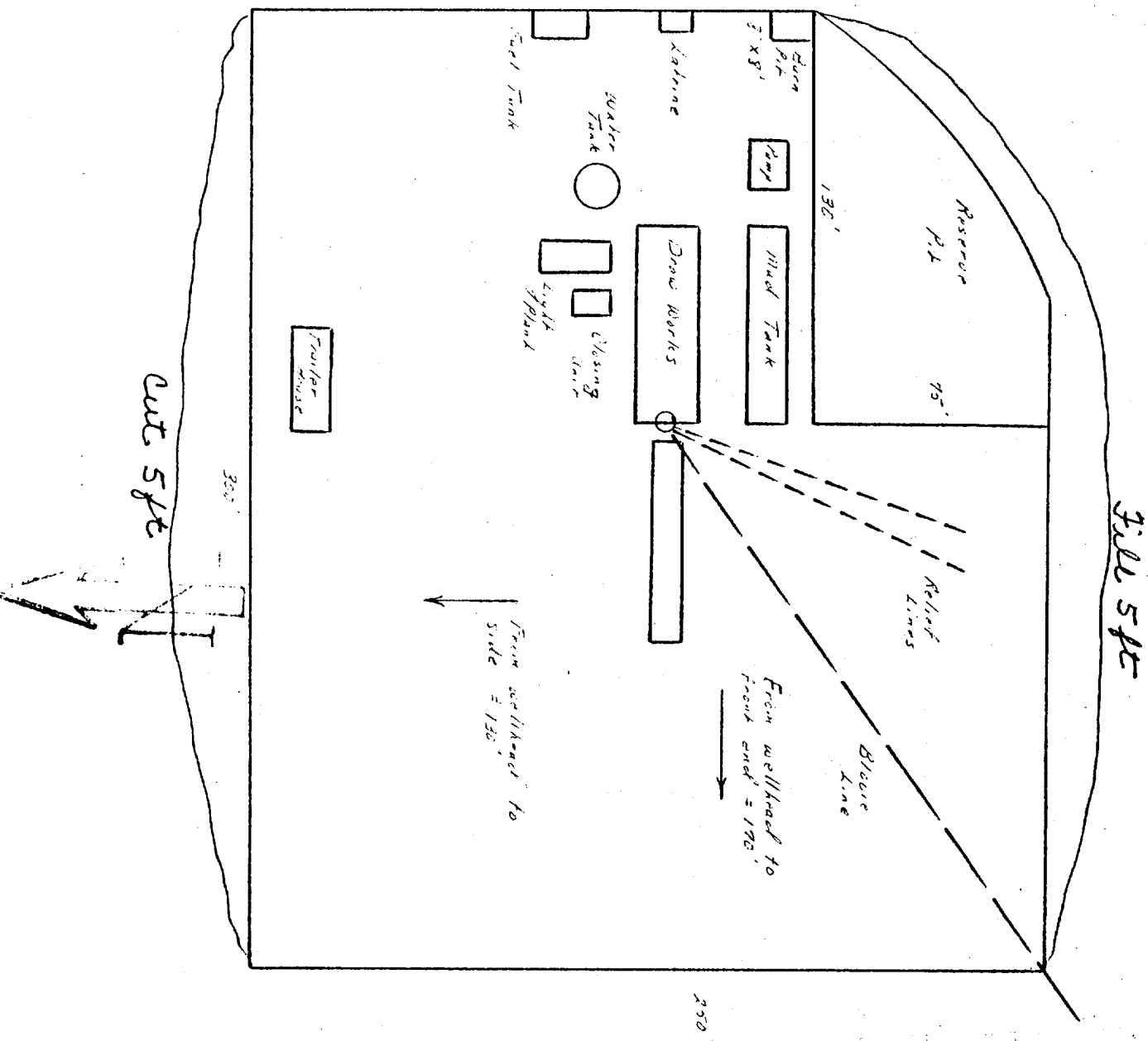


MAP #2

LEGEND OF RIGHT-OF-WAYS

EXISTING ROADS	—
EXISTING PIPELINES	— + + + —
EXISTING ROAD & PIPELINE	— + + + —
PROPOSED ROADS	—
PROPOSED PIPELINES	+ + + +
PROPOSED ROAD & PIPELINE	+ + + +

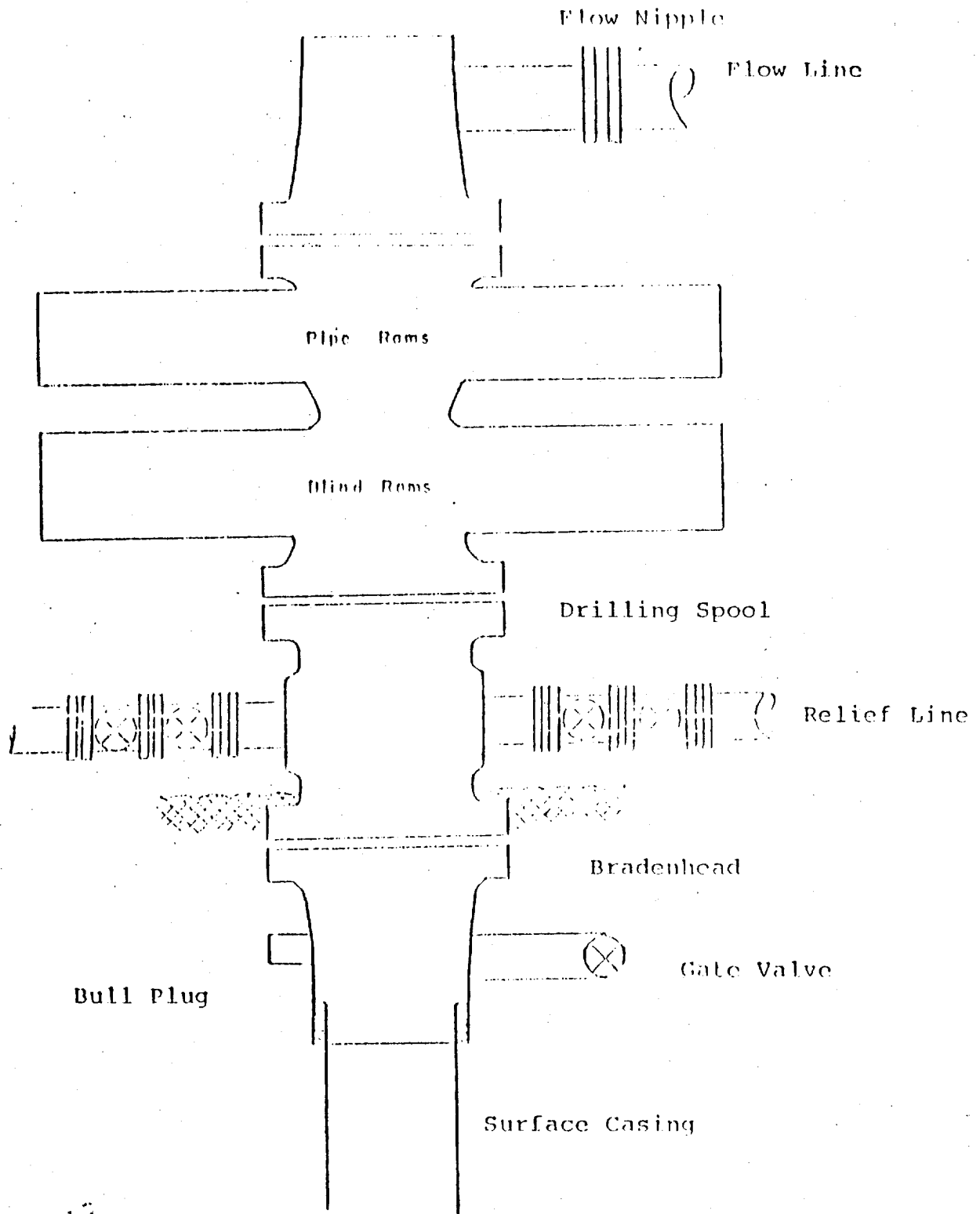
El Paso Natural Gas Company
 Typical location Plat for mesa Verde and Abasco Wells



DEC 25 1977

U.S. GEOLOGICAL SURVEY

Typical B.O.P. Installation
for Mesa Verde Well



10" 900 x 9 5/8" casing head
10" 900 x 6" 900 xmas tree

DEC 27 2013

10:00:00 AM

Operations Plan
Jicarilla 119 N #7A

I. Location: SE/4 Section 8, T-26-N, R-4-W, Rio Arriba County, New Mexico

Field: Blanco Mesa Verde

Elevation: 6802'GR

II. Geology:

A. Formation Tops:	Ojo Alamo	2930'	Lewis	3595'
	Kirtland	3160'	Mesa Verde	5140'
	Fruitland	3245'	Menefee	5275'
	Pic.Cliffs	3495'	Point Lookout	5635'
			Total Depth	6035'

B. Logging Program: GR-Ind. and GR-Density at Total Depth.

C. Coring Program: none

D. Natural Gauges: 5265', 5625' and at Total Depth.

Also gauge any noticeable increase in gas. Record all gauges in daily drilling report and on morning report.

III. Drilling:

A. Mud Program: mud from surface to 3795' . Gas from intermediate casing to Total Depth.

IV. Materials:

A. Casing Program:	Hole Size	Depth	Casing Size	Wt.&Grade
	13 3/4"	200'	9 5/8"	32.3# H-40
	8 3/4"	3795'	7"	20.0# K-55
	6 1/4"	3795'-6035'	4 1/2"	10.5# K-55

B. Float Equipment: 9 5/8" surface casing - Larkin guide shoe (fig. 102)

7" intermediate casing - Dowell guide shoe (fig. 50101) and Dowell self-fill insert float valve (fig. 53003), 5 B&W stabilizers (Prod. No. 637085) every other joint above shoe. Run float two joints above shoe.

4 1/2" liner - T.I.W. liner hanger with neoprene packoff. Larkin geyser shoe (fig. 222) and Larkin flapper type float collar (fig. 404 M&F).

C. Tubing: 6035' of 2 3/8", 4.7#, J-55 8rd EUE tubing with a common pump seating nipple above perforated pup joint with bull plugged full joint for mud anchor on bottom.

D. Wellhead Equipment: 10" 900 x 9 5/8" OCT casing head. 10" 900 x 6" 900 OCT xmas tree.

DEC 21 1976

Operations Plan - Jicarilla 119 N #7A

V. Cementing:

9 5/8" surface casing - use 190 sks. of Class "B" cement with 1/4# gel-flake per sack and 3% calcium chloride (224 cu.ft. of slurry, 100% excess to circulate to surface). WOC 12 hours. Test casing to 600#/30 minutes.

7" intermediate casing - use 43 sks. of 65/35 Class "B" Poz with 12% gel (15.52 gallons of water per sack) followed by 70 sks. of Class "B" with 2% calcium chloride (195 cu.ft. of slurry, 50% excess to cover Ojo Alamo). Run temperature survey at 8 hours. WOC 12 hours. Test casing to 1200#/30 minutes.

4 1/2" liner - precede cement with 20 barrels of gel water (2 sks. gel) Cement with 240 sks. of Class "B" cement with 4% gel, 1/4 cu.ft. of fine gilsonite per sack and 0.6% Halad-9 (424 cu.ft. of slurry, 70% excess to circulate liner).

DEC 21 1973

W. A. C. 119 N #7A